

NEW! Patent Pending

PWR Series Power Pushbutton



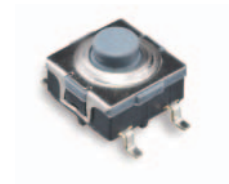
A
Pushbutton

Features/Benefits

- Movable contact with redundant high power contact points to form a momentary, SPST, double break switch
- Rubber actuator provides sealing and tactile feel.
- Small SMT packaging allows applications to integrate power and signal switch on same PCB
- RoHS compliant and compatible
- IP65

Typical Applications

- Computers and peripherals
- Automotive power function
- White goods and appliances
- Industrial power applications



Specifications

OPERATING FORCE: 7N typical.
 OPERATING LIFE: Q1: 25,000 cycles; Q2: 100,000 cycles.
 CONTACT RATING: 2A @ 125 VAC / 1A @ 250 VAC.
 CONTACT RESISTANCE: 100mΩ max. initial.
 DIELECTRIC STRENGTH: 1500 VRMS min.
 INSULATION RESISTANCE: 100 Mega-ohms min.
 BOUNCE TIME: 20 milliseconds max.
 OPERATING TEMPERATURE: -20°C to 85°C

Materials

MOVABLE CONTACTS: Silver alloy.
 FIXED CONTACTS/TERMINALS: Silver alloy / Tin over brass.
 BASE: PPS.
 FRAME: Stainless steel.
 ACTUATOR: Silicone rubber.

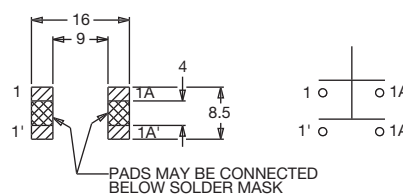
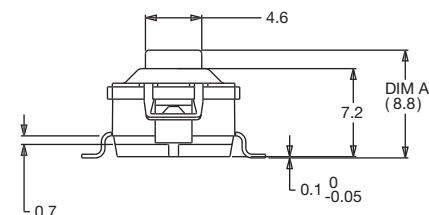
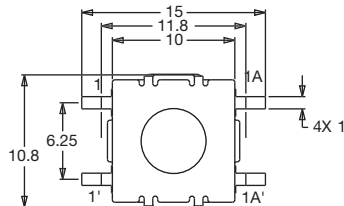
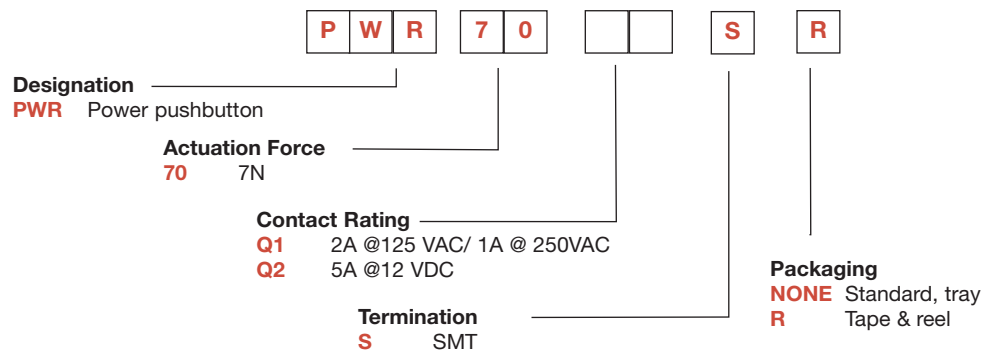
Packaging

In reels of 425 pieces.
 Dimensions of reels according to EIA RS481 or IEC 60286-3.
 External diameter 330 mm ± 2 mm.

NOTE: Specifications and materials listed above are for switches with standard options.
 For information on specific and custom switches, please contact Customer Service.

Build-A-Switch

To order, simply select desired option from each category and place in the appropriate box.



SWITCH STATE	DIM A
Free position	8.7
Operate position	7.7
Max travel	7.1



Dimensions are shown: mm
 Specifications and dimensions subject to change

X-ON Electronics

Largest Supplier of Electrical and Electronic Components

Click to view similar products for [c&k manufacturer](#):

Other Similar products are found below :

[ESMK1215NCL130](#) [QS1 KQS1 BK S C 773302263](#) [473202000](#) [479603000](#) [121280](#) [4151](#) [604039](#) [SERU AU BRAUN 110036](#)
[7101J50V5QE2](#) [7101K2CWZBE](#) [7101MD9ABE2](#) [7101SDV7QE](#) [7101SDZBE2](#) [7103T1CWV3GE](#) [7105K2CWZQE](#) [7105TCWZBES](#)
[7108J2ZQE1](#) [7201TCWCBE](#) [7203MCWCQE](#) [7203T1ZQE](#) [7207SYCBE](#) [7208L41YZQE](#) [7211SPY3AV2SE2](#) [7215J1AV2BE2](#) [7215JBV6BE](#)
[7215L3YZQE](#) [ET05LD1AGE](#) [ET05MD1AVBE](#) [7401J3ZQE3](#) [7405MHZBE](#) [7411J3ZQE1](#) [752708000](#) [FA0115RN02Q](#) [8161LHZ3QE22](#)
[8161LHZQE2](#) [FLT 2U EE 01A](#) [MMGGF5L0T](#) [MP01R133CBE](#) [A10403RNZQE](#) [1.20123.0050000](#) [A11205RNZQ](#) [A20303RNCG](#)
[A30415RSCG](#) [12TL402](#) [ADPFF3J04AW](#) [1.30070.0011002](#) [DM22J11S205PQ](#) [DT450T](#)