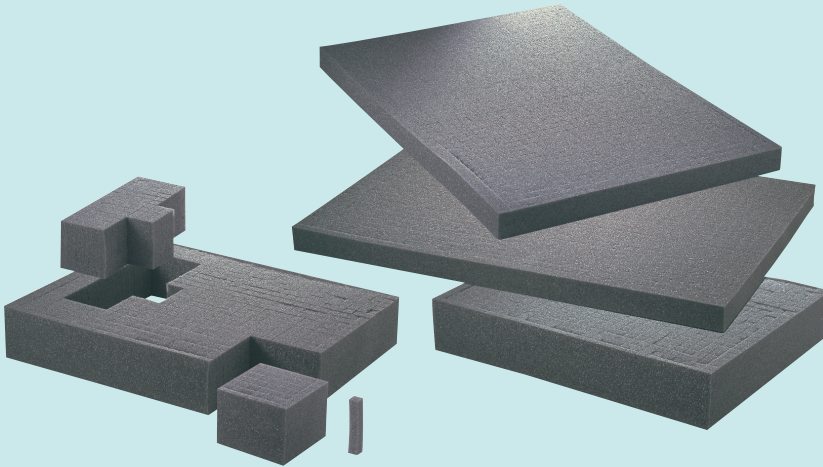


FOAM INLAYS

Loose gridded blanks (individual fabrication of suitcases)



For an individual design of inlays for suitcases or Euro boxes.

Length x Width x Height

440 x 320 x 20

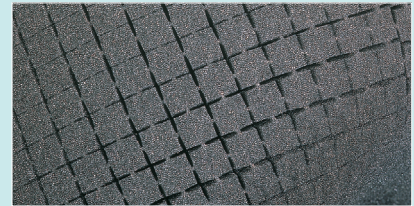
440 x 320 x 40

640 x 440 x 20

640 x 440 x 40

→ Grid 13 x 13

Gridded foam made of PU for individually designed inserts



Yard ware plate and napped foam

e.g. sound protection for party rooms or rehearsal rooms for musicians.

Plate foam

2000 x 1000

Sizes 10, 20, 30 mm

additional sizes on request

Napped foam

2000 x 1000

Sizes 20, 30, 40, 50 mm

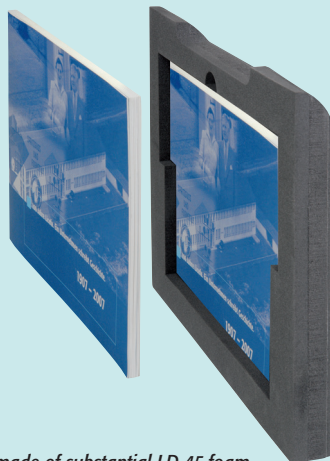
additional sizes on request



Art.-No. 3520

Spray glue for easy and efficient fixing of foam inserts, e.g. in cases.

Compartments for documents



Document compartment made of substantial LD 45 foam.
One compartment per suitcase on request!

FOAM INLAYS + EQUIPMENT

CUSTOMIZED FOAM INSERTS



Example of a customer specific PU stamping part

CUSTOMISED VACUUM-FORMED INSERTS

- For the secure fixing of parts and items, e.g. small bottles
- Easy to clean
- Colours of vacuum-formed inserts on request



SCREEN PRINTING ACCORDING TO CUSTOMER'S SPECIFICATION

On this page we want to show you just two examples for printing suitcases.

- Screen printing according to customer's specification possible, single-coloured or multicoloured
- Printing of complete surface possible
- E.g. screen printing on the K 2000, especially suitable for DIN A4 leaflets



X-ON Electronics

Largest Supplier of Electrical and Electronic Components

Click to view similar products for [lice](#) manufacturer:

Other Similar products are found below :

[K 2007 ESD](#) [A1-4 ESD 144](#) [K 2005 ESD 440/320/20](#) [K 2005 ESD NOPPE](#) [A1-4/4 ESD MIX](#) [V11-4](#) [SMD-BOX N2-2-2-8-8](#) [A1-4 ESD 16](#)
[V11-5](#) [SMD-BOX N4-6-6-10-1 LS](#) [K2004 ESD NOPPE](#) [SMD-BOX N3-6-6-10-10](#) [SMD-BOX N1-2-2-4-4](#) [SMD-BOX N1-2-2-8-8](#) [K2001-9-](#)
[9-2-2-\(10\)/P](#) [SMD-BOX N4-6-6-10-10](#) [A1-2/6BUNT](#) [SMD-BOX N2-2-2-7-7](#) [SMD-BOX N3-2-3-7-1](#) [V11-3](#) [V3-18/9-6-10](#) [SMD-BOX N2-2-](#)
[3-6-1](#) [SMD-BOX N4-2-3-4-1](#) [SMD-BOX N1-2-3-8-1](#) [K 2001 ESD](#) [SMD-BOX N1-2-3-7-1](#) [K 2001](#) [K 2004 ESD](#) [V5-124](#) [V5-96](#) [A4-3-6-10](#)
[V3-12/9-6-10](#) [V20-18](#) [SMD-BOX N3-2-3-6-1](#) [SMD-BOX N 2-2-3-4-1](#) [V20-10](#) [A4-1-6-10](#) [V5-20](#) [V20-7](#)