

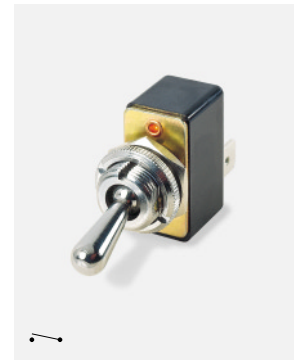
# 0600 Lever Switches 1A 250Vac

**In house test** 1A 250Vac  
10A 6/24Vdc

3mm contact gap  
Technical data on pages 4 & 5



C0600HD - - -



C0600CC - - -

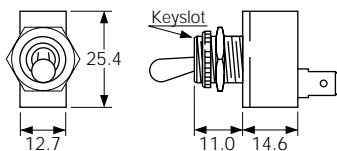
**C 0600 H D - - -**

TERMINAL    FUNCTION    ACTUATOR    BODY    OPTIONS

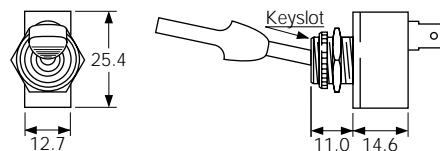
▶ TERMINAL	▶ FUNCTION	▶ ACTUATOR	▶ BODY	▶ OPTIONS
<p><b>C</b></p> <p>6.3 x 0.8 10.1</p>	<p><b>0600</b></p> <p>ON - OFF</p> <p><b>0602</b></p> <p>ON - OFF (momentary ON)</p>	<p><b>C</b> Chromed brass (0600)</p> <p>15.0</p> <p><b>U</b> Nylon (0600)</p> <p>12.1</p> <p><b>G</b> Nylon (0600)</p> <p>27.0</p> <p><b>H</b> Nylon (0600)</p> <p>17.0</p> <p><b>S</b> Chromed brass stem/ nylon paddle (0602 only)</p> <p>41.8</p>	<p><b>D</b> Nylon neck and top plate (Used with actuator codes U, G and H)</p> <p><b>C</b> Metal neck and top plate (Used with actuator codes C and S)</p> <p>1.3 Ø12.7    11.1</p> <p>Panel thickness - 3.5mm Back nut must be fitted</p> <p><b>Fixing nuts</b> (Standard is M506 &amp; T92)</p> <p><b>T5</b> Hex brass    15.2</p> <p><b>M506</b> Hex nylon    3.0 (M506) 2.0 (T5)</p> <p><b>T92</b> Knurled brass    16.0</p> <p><b>M279</b> Knurled nylon    16.2</p> <p>2.6 4.1</p>	<p><b>Cover M331</b> (C Actuator only)</p> <p><b>Seal M539</b> (C,H &amp; U Actuators) Actuator visible</p> <p><b>Cover M1080</b> (C Actuator only)</p> <p>Covers have internal nylon nuts</p>

## Dimensions (mm)

**0600** (U actuator shown)



**0602**





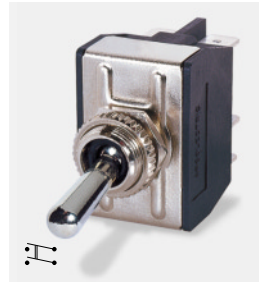
C3900BA ---



C3920BA ---



**Guard R17-10**  
Anti-rotation tab can be specified for guard fitted in On or Off position



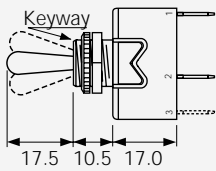
C3950BB ---



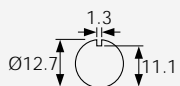
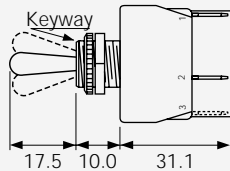
C3972BB ---

**BODY**

**A**  
Without terminal barrier  
Single pole



**B**  
With terminal barrier  
Double pole only



Panel hole (all types)

**OPTIONS**

**Neck Seal M539**

Actuator is visible



**Cover M1080**



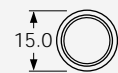
Covers have internal nylon nuts

**Fixing nuts**

Nickel plated brass are supplied



Hex Back nut



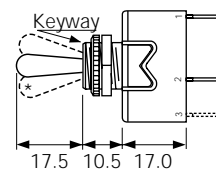
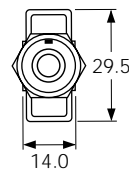
Knurled Front nut

Panel thickness 4.0 with backnut

**DIMENSIONS** (mm) \* Indicates ON position (for On - Off switches)

**Single Pole**

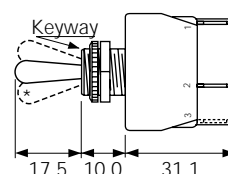
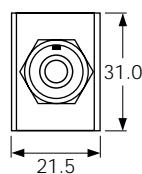
(C terminals shown)



Optional  
P232 plate  
SP or DP

**Double Pole**

(C terminals shown)

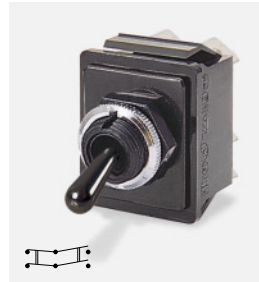




C1700RO ---



C1700HO ---



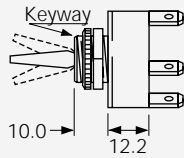
C1760RO ---



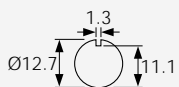
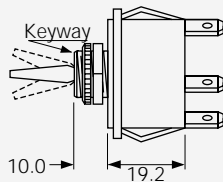
C1750HO ---

**BODY**

**0**  
Single pole



**0**  
Double pole



Panel hole (all types)  
Panel thickness (Max)  
Both nuts - 3.5mm  
Less backnut - 6.5mm

**OPTIONS**

**Neck Seal M539**  
Rubber -57T145  
(H & R Actuators)  
Actuator visible



**Cover M1080**  
Rubber -57T145  
(R Actuator only)

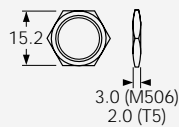


**Cover M331**  
PVC -5T85  
(R Actuator only)

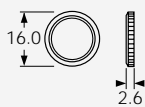


Covers have internal nylon nuts

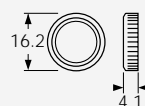
**Fixing nuts** (Standard is M506 & T92)  
T5 Hex brass  
M506 Hex nylon



T92 Knurled brass



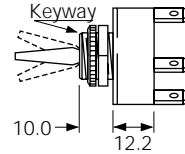
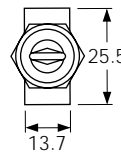
M279 Knurled nylon



**DIMENSIONS (mm)**

**Single Pole**

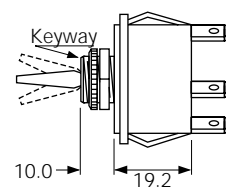
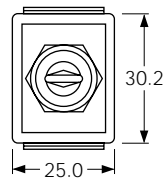
(C terminals shown)



Optional  
P232 plate  
SP or DP

**Double Pole**

(C terminals shown)



Optional terminal barrier M441 is available

## X-ON Electronics

Largest Supplier of Electrical and Electronic Components

*Click to view similar products for [Switch Hardware](#) category:*

*Click to view products by [Arcoelectric](#) manufacturer:*

Other Similar products are found below :

[893102000](#) [LZZ1A](#) [0098.9234](#) [61-9707.7](#) [61-9771.0](#) [M2PA-5011](#) [635401](#) [6PA104](#) [6PA113](#) [6PA147-E6](#) [6PA148-E6](#) [6PA32](#) [6PA9](#) [700106](#)  
[700109](#) [700201A56](#) [700303A56](#) [700701264](#) [700C1GRY](#) [700C2GRN](#) [704-6001](#) [704.960.4](#) [704.960.9](#) [704.965.1](#) [704.965.2](#) [704.965.6](#)  
[704.966.0](#) [7089-3](#) [71M1048](#) [757200264](#) [778000A56](#) [79215938](#) [MHU35](#) [MHU37](#) [825.003.011](#) [825.005.011](#) [825.053.011](#) [825.055.011](#)  
[826.000.071](#) [827.020.011](#) [827.400.021](#) [835.900.023](#) [MML52C10C](#) [MML52E10C](#) [MML72EEK](#) [MML92HGH](#) [MML93K](#) [84211M02CNNS](#)  
[84211M02LGRS](#) [84211M02LNNX3](#)