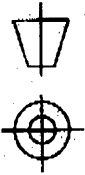


DRAWING No.
010014TD

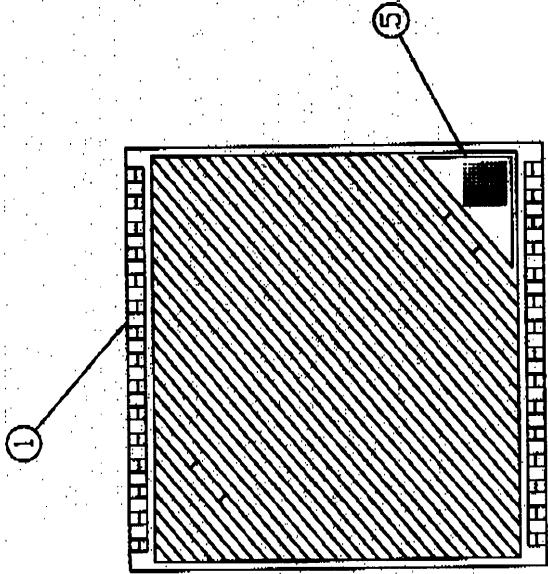
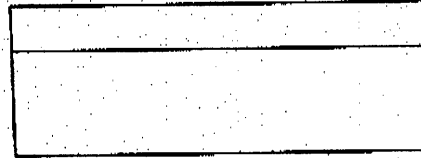
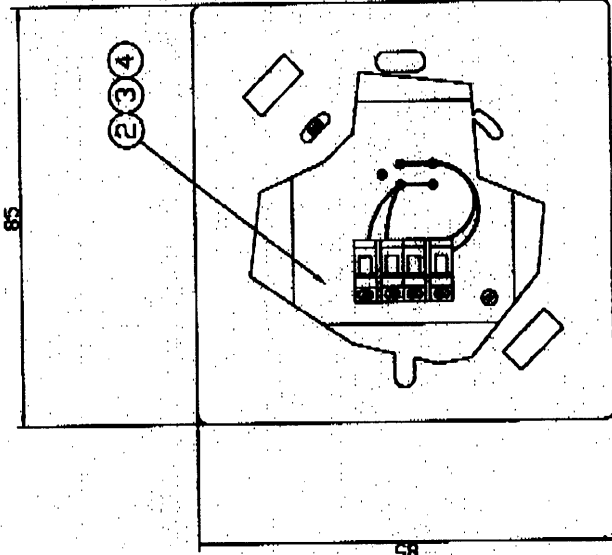
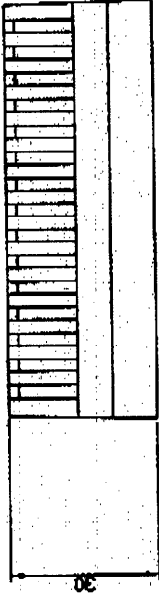
DO NOT SCALE



THIRD ANGLE PROJECTION

IF IN DOUBT ASK

COPY



IS-SUE	REASON FOR CHANGE	DRAWING APP.	J.S.C.	DATE	30.11.98	SCALE	N.T.S.
A	REFER TO NDR 0011		J.S.C.		30.11.98		
MATERIAL:		INJ. PLASTIC		TITLE: INTERNAL TEMPERATURE AIR BOX ASSY.		DRAWING No.	
FINISH:		CLEAN		TOLERANCE: +0.25 UNLESS STATED OTHERWISE -0.25 DOES NOT APPLY TO ASSY. DIMS.		DRAWING No.	
THIS DRAWING REMAINS THE PROPERTY OF LAB FACILITY LIMITED AND MAY NOT BE REPRODUCED WITHOUT OUR PERMISSION		LAB FACILITY LIMITED, 99 WALSDEGRAVE ROAD, TODDINGTON, MIDDLESEX, TW11 0LR. TEL: 0181 9435331 FAX: 0181 9434351		PART NUMBER: FARNELL 725-5720		010014TD	
				SHEET 1 OF 1 SHEETS		SHEET 301 A3	

X-ON Electronics

Largest Supplier of Electrical and Electronic Components

Click to view similar products for [Board Mount Temperature Sensors](#) category:

Click to view products by [Labfacility](#) manufacturer:

Other Similar products are found below :

[5962-8757102XA](#) [66F115](#) [MCP9808-EMS](#) [MCP98242T-BEMNY](#) [MCP9843T-BEMC](#) [EMC1063-1-ACZL-TR](#) [NCT218FCT2G](#)
[O53GAB175A-160Y](#) [OH10/62,112](#) [3610085020002](#) [389049M9527](#) [TC622EAT](#) [TC6501P095VCTTR](#) [TC6501P105VCTTR](#)
[TC6501P125VCTTR](#) [MCP9802A0T-M/OT](#) [MCP9803T-M/SN](#) [MCP9843-BEST](#) [TC6501P115VCTTR](#) [TC6502P065VCTTR](#)
[ADM1023ARQZ-REEL](#) [ADM1024ARUZ-REEL](#) [ADM1032ARMZ-1RL](#) [AT30TS74-U1FMBB-T](#) [AT30TS74-U1FMAB-T](#) [AT30TS74-](#)
[U1FMCB-T](#) [AT30TS74-U1FMDB-T](#) [ADT7483AARQZ-RL](#) [ADT7481ARMZ-REEL](#) [ADT7463ARQZ-REEL](#) [MCP98243T-BEMNY](#)
[MCP98243T-BE/MC](#) [66L080-0226](#) [MAX31820MCR+T](#) [MAX1452CAEC8H](#) [DS1780E](#) [TMP05BKSZ-REEL7](#) [5962-8757103XA](#) [WTK-14-](#)
[36/N](#) [E52-CA6D-N 4M](#) [MCP98244T-BEMNY](#) [MCP9802A5T-MOT](#) [MAX6581TG9A+T](#) [DS75S-C11+T&R](#) [S-58LM20A-I4T1U](#)
[MAX6501UKP120+T](#) [MCP98243T-BE/ST](#) [AT30TS01-MAA5M-T](#) [NCT375DR2G](#) [DS18S20-SL+T&R](#)