

Accessories

End caps, 2 to 3 pole

End caps, 4 to 5 pole

	For safely covering unused male or female connectors.		Protected against loss For safely covering unused male or female connectors.	For safely covering unused male or female connectors.		Protected against loss For safely covering unused male or female connectors.
Color	Part No.	Std. Pack	Part No.	Std. Pack	Part No.	Std. Pack
For covering unused male connectors						
gray black concrete gray green	05.564.4453.0 05.564.4453.1		99.415.6205.2 99.416.6205.2		05.565.9953.0 05.565.9953.1	99.531.0000.7 99.532.0000.7
Color	Part No.	Std. Pack	Part No.	Std. Pack	Part No.	Std. Pack
For covering unused female connectors						
gray black	Z5.564.4553.0 Z5.564.4553.1		99.413.6205.2 99.414.6205.2		Z5.565.9853.0 Z5.565.9853.1	99.529.0000.7 99.530.0000.7

Accessories

Fastening cord

Manual disconnect*

Mounting plate

For fastening of end caps

For later installation of 2 to 5 pole connectors. Connections can easily be released by using the manual disconnect.

For later installation of cable assemblies RST 20i2 and RST 20i3 with shrinkage tube. Connections can easily be released by using the manual disconnect.

For splitter connectors

Also see the "Installation instructions"!

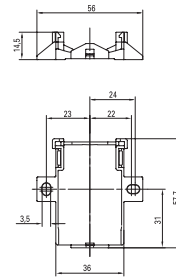
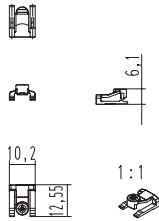
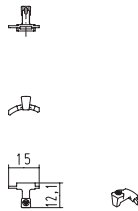
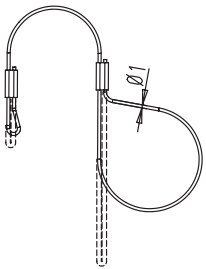
Also see the "Installation instructions"!

Part No. Std. Pack

Part No. Std. Pack

Part No. Std. Pack

Part No. Std. Pack



99.000.9950.6

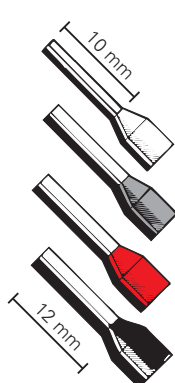

05.564.8653.1
05.564.8653.3
05.564.8653.7

05.565.9953.1
05.565.9953.3
05.565.9953.7

01.006.1553.1
01.006.1553.0

* Note:
Connections with manual disconnect are not approved according to VDE 0606 (fixed installations, for example in buildings). The VDE 0627 regulation will still apply nevertheless.
Also see the "Installation instructions"!

Accessories and sample kits

		Crimp contacts*		Crimping tool:		Ferrules		Insertion tool		
		For safely covering unused male or female connectors.		With system kit		For RST 2013 spring clamp connectors with insulating sleeve for wires of 0.5 mm ² according to DIN 46228-E0,5-10 0.75 mm ² accord. to DIN 46228-E0,75-12 1.0 mm ² accord. to DIN 46228-E1,0-12 1.5 mm ² accord. to DIN 46228-E1,5-12 Material: Sleeve: Polypropylene; temperature resistance up to 105°C, tracking resistant Tube: E-Cu, galvanically tin-plated		For termination points with spring clamp technology for ferrules 0.08 – 6 mm ² , AWG 28 – 10 <ul style="list-style-type: none"> • Square compression • Releasable latch • Compression adjustable Total length: 174 mm		
Color		Part No.	Std. Pack	Part No.	Std. Pack	Part No.	Std. Pack	Part No.	Std. Pack	
	Female contacts	available in the 3rd quarter of 2006		available in the 3rd quarter of 2006						
	Marking (groove)									
	without	0.75 – 1.0 mm ²	02.125.5521.8	100	Crimping tool	95.101.0800.0	0.5 mm² white	06.600.3827.0	95.101.1300.0	1
	1	1.5 mm ²	02.125.5621.8	100	Crimping die B	05.502.2100.0	0.75 mm² gray	06.600.3727.0		
	2	2.5 mm ²	02.125.5721.8	100	Contact positioner	05.502.3600.0	1.00 mm² red	06.600.3627.0		
	3	4.0 mm ²	02.125.5821.8	100			1.50 mm² black	06.600.3927.0		
Color		Part No.	Std. Pack	Part No.	Std. Pack	Part No.	Std. Pack	Part No.	Std. Pack	
	Male contacts	available in the 3rd quarter of 2006		Unlocking tool for crimp contacts		Screwdriver accord. to DIN 5264				
	Marking (groove)									
	without	0.75 – 1.0 mm ²	05.545.0021.8	100	05.502.3500.0	06.502.4000.0	for RST spring clamp connections 0.4 x 2.5 mm blade	06.502.4300.0		
	1	1.5 mm ²	05.545.0121.8	100						
	2	2.5 mm ²	05.545.0221.8	100						
	3	4.0 mm ²	05.545.0321.8	100						

* Available on straps or in magazines on request

Accessories

RST 20i3 sample kit		RST 20i5 sample kit		RST 20i2...i5 sample kit		Sample illumination cable	
to try out Contents: – Connectors – Device connections – End caps		to try out Contents: – Connectors – Device connections – End caps		Complete kit Contents: – Connectors, including all codings – Appliance connectors – Cable assemblies – Distributor – End caps		Sample piece Contents: – RST 20i2 connector pre-assembled with illumination cable – Lamp base and end piece (no lamp)	
Part No.	Std. Pack	Part No.	Std. Pack	Part No.	Std. Pack	Part No.	Std. Pack
							
99.429.0000.0		99.430.0000.0		99.431.0000.0		99.490.0000.0	
Additional gaskets available on request						The illumination cable is not a standard Wieland product.	
							
Available on request							

X-ON Electronics

Largest Supplier of Electrical and Electronic Components

Click to view similar products for [wieland manufacturer](#):

Other Similar products are found below :

[57.504.0053.7](#) [57.904.4955.0](#) [57.904.7455.0](#) [57.910.6153](#) [01.001.6553.0](#) [01.112.1453](#) [02.125.1600.0](#) [CWD012-5](#) [CWD012-L](#) [CWD02-A](#)
[CWD02-D](#) [CWD02-H](#) [CWD02-K](#) [CWD02-M](#) [CWD02-Q](#) [CWD02-R](#) [CWD02-U](#) [CWD02-W](#) [CWD02-Y](#) [CWD03+](#) [CWD03-P](#)
[70.105.1653.3](#) [70.331.1628.0](#) [70.340.1028.0](#) [70.343.2428.0](#) [70.353.4835.1](#) [70.355.2435.1](#) [70.364.4828.0](#) [70.372.1035.0](#) [70.372.4835.1](#)
[70.372.4835.3](#) [70.400.3240.0](#) [70.500.4853.0](#) [70.810.1053.0](#) [70.955.2453.3](#) [71.321.1028.0](#) [71.350.1028.0](#) [72.250.1628.2](#) [72.250.2428.2](#)
[72.250.2435.2](#) [72.301.1653.9](#) [72.325.1628.0](#) [72.353.1635.0](#) [73.352.6428](#) [73.353.4028.1](#) [73.363.6428.0](#) [77.340.1635.0](#) [78.111.0453.0](#)
[78.903.0153.0](#) [78.914.0253.0](#)