



Clifford & Snell

YO4/YL4

Industrial Audible and Visual Alarm

~ Yodac ~

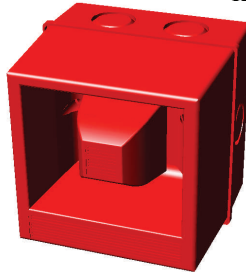
Tom Cribb Road, Thamesmead,
London SE28 0BH
Tel: +44 (0)20 8316 4477
or (0)20 8317 1717
Fax: +44 (0)20 8317 2400
Email: cliffordandsnell@aol.com
Web Site: www.cliffordandsnell.com



YL4



KM91259

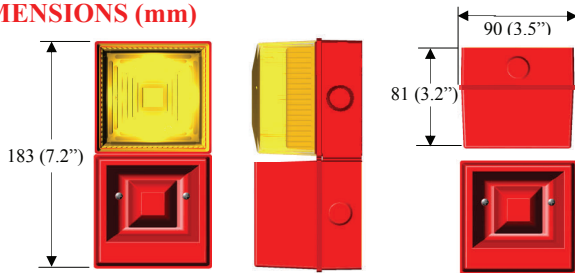


YO4

MAIN FEATURES

- 2 Stage alarm
- High sound output
- 3 wire polarised DC (Not additional voltage option) & AC, or 2 wire bi-polar for DC only.
- 3 wire AC second stage control
- Complies with BS 5839
- Strobe 2.5 and 5 joule.
- Choice of 6 lens colours: Amber (A), Red (R), Green (G), Opal (O), Blue (B) and Clear (C) made from flame retardant polycarbonate plastic
- Red / white flame retardant ABS plastic enclosure.
- Continuously rated
- Flush mounting base available
- 32 selectable tones meeting international regulations
- Sound selection via 5 way DIL switch

DIMENSIONS (mm)



All dimensions quoted are approximate only and subject to change without notice as are technical features resulting from continual development and improvement.

CONFIGURATOR

Unit type YO4

Supply Voltage 24Vdc
48Vdc
115Vac
230Vac
24Vdc and 48Vdc
110Vdc

Material Red Flame
Red Normal
White

IP65

Optional Independent 2nd Stage

Certification USA/Canada

Unit type YL4

Strobe 12Vdc 2.5 joules

Supply Voltage and Flash Energy 24Vdc 2.5 joules
24Vdc 5.0 joules
48Vdc 5.0 joules
115Vac 5.0 joules
230Vac 5.0 joules

Lens Colour A, R, G, O, B, C

Material Red Flame
Red Normal
White

IP65

Optional Independent 2nd Stage

Certification USA/Canada

TECHNICAL SPECIFICATION

- Operating temperature -25 to +55 deg C
- Storage temperature -40 to +70 deg C
- Operating voltage 24Vdc, 48Vdc, 115Vac, 230Vac +/- 10%
- Additional voltage options (Sounders only) 24Vdc and 48Vdc (BT) 110Vdc (12Vdc versions will produce approx. 6dB less output)
- Relative humidity 95% @ 40 deg C
- Sound output 106dB(A) at 1 mtr
- IP54 rated std, IP65 (WR) to order
- Weight: YO4 0.22Kg (DC), 0.32Kg (AC)
YL4 0.47Kg (DC), 0.57Kg (AC)
- Volume control allowing 18dB(A) adjustment
- Minimum current consumption 20mA
- Optional independent 2nd stage via second DIL switch (DC only)

MOUNTING

The YO4/YL4 series alarm should be mounted to a reasonably flat wall or bulkhead of suitable material using the internal fixing holes. The recommended fixing screws are dia 4.5 mm max x 20 mm long. To maintain the integrity of the weather seal, the cable must be fitted using a suitable sealed gland.

LINE MONITORING (DC Only) excludes additional voltage options

- 3 Wire 2 stage or 2 wire single stage, monitor via reverse polarity
- 2 Wire 2 stage i.e. bi-polar inputs, monitor via threshold (applied voltage <1V)
End of line resistor. Minimum 3K3 ohm 0.5 watts, wire-wound or metal film type.

APPROVAL SPECIFICATION

UL 1638, UL 464
C22.2 No. 205-M1983, CAN/ULC-5526-M87
BS EN 54-3 : 2001 incorporates amendment A1 : 2002

YO4 Vdc 0.22 Kg	YO4 Vac 0.32 Kg	YL4 Vdc 0.47 Kg
YO4 Vdc 2.5 Kg	YO4 Vac 2.5 Kg	YL4 Vac 0.57 Kg

X-ON Electronics

Largest Supplier of Electrical and Electronic Components

Click to view similar products for [clifford](#) and [snell](#) manufacturer:

Other Similar products are found below :

[YA50/L/RF/WR](#) [YL50/L50/A/RF/WR](#) [YA80/D/RF/SU/WR](#) [FL40/N50/R/RN](#) [YL40/D50/R/RN/WR](#) [YL40/D50/A/RN/WR](#)

[YL50/N50/R/RF/WR](#) [YA50/N/RF/WR](#) [YA30/D/RF/WR](#) [YL50/D50/A/RF/WR](#) [YA50/D/RF/WR](#) [YL50/L50/R/RF/WR](#) [YL50/D50/R/RF/WR](#)