

THIS DRAWING IS A CONTROLLED DOCUMENT FOR SOURIAU USA, INC. IT IS SUBJECT TO CHANGE WITHOUT NOTIFICATION. CONTACT THE DOCUMENT CONTROL CENTER FOR THE LATEST REVISION.

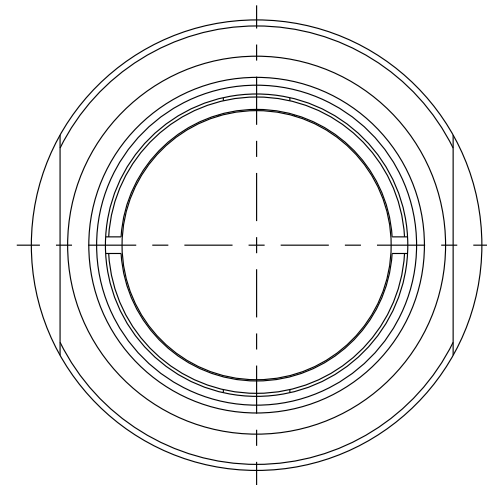
DWG. NO. **JBXFD2C**

**ELECTRICAL:**  
 EMI SHIELDING : SHIELDED FOR THE RANGE 55dB UP TO 100MHZ  
 INSULATION RESISTANCE : >500MΩ PER ANSI-EIA-364-D METHOD 21  
 MAX. CURRENT RATING : SEE INSULATOR DRAWING  
 CONNECTOR TESTING VOLTAGE : SEE INSULATOR DRAWING  
 CONNECTOR WORKING VOLTAGE : SEE INSULATOR DRAWING  
**PHYSICAL:**  
 MAXIMUM WIRE SIZE USED : SEE INSULATOR DRAWING  
 CABLE DIAMETER WITH PLASTIC COLLET SET SUPPLIED: Ø3.5mm MIN. TO Ø9.7mm MAX.  
**ENVIRONMENTAL:**  
 ENDURANCE: 1000 CYCLES AS PER MIL-STD 1344A, METHOD 2016.1  
 SHOCK: 50 g , DURATION 6 ms; AS PER MIL-STD 1344A, METHOD 2004.1  
 VIBRATIONS: 10 TO 2000Hz g = 15g. AS PER MIL-STD 1344A, METHOD 2005.1  
 PROTECTION INDEX: IP 40 AS PER CEI 529  
 ROHS COMPLIANT  
 SALT MIST : 48Hr PER SAE AS 1344 METHOD 1001.1 CEI 529

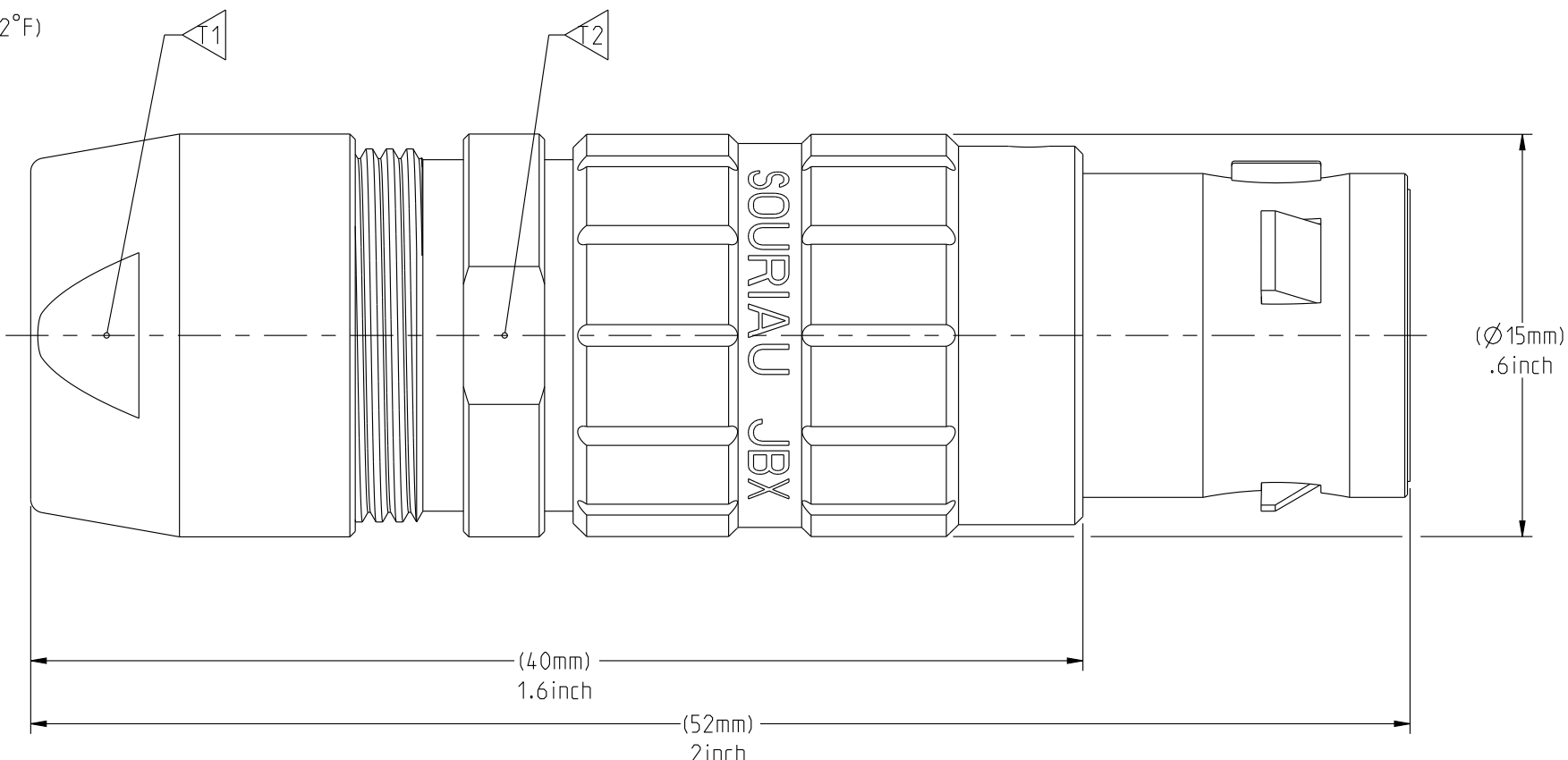
**OPERATING TEMPERATURE:**  
 WITH PLASTIC COLLETS: -55°C TO +125°C (-67°F TO +257°F)  
 WITH OPTIONAL METALLIC COLLETS: -55°C TO +200°C (-67°F TO +392°F) (ONLY ON REQUEST)

MASS (g)	VOLUME (mm <sup>3</sup> )
24.4	4260

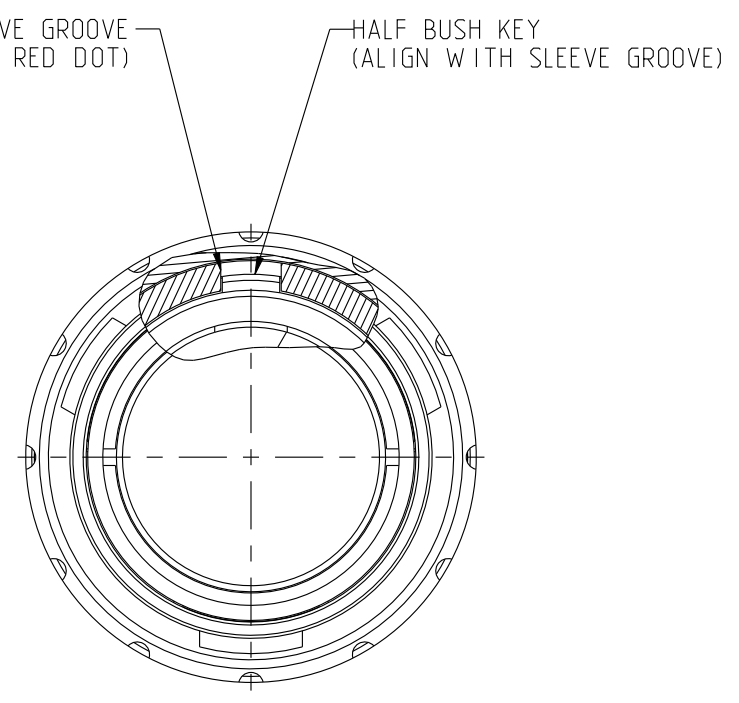
**NOTES:**  
 1 RED DOT.  
**MATERIAL:**  
 OUTER SHELL & BACK NUT : } BRASS  
 LATCHING SLEEVE : }  
 HALF BUSHES : }  
 COLLET : POLYAMIDE  
**FINISH:**  
 OUTER SHELL & BACK NUT : CHROME  
 OTHER BRASS PARTS : NICKEL  
**TOOLS**



WIRE SIDE VIEW

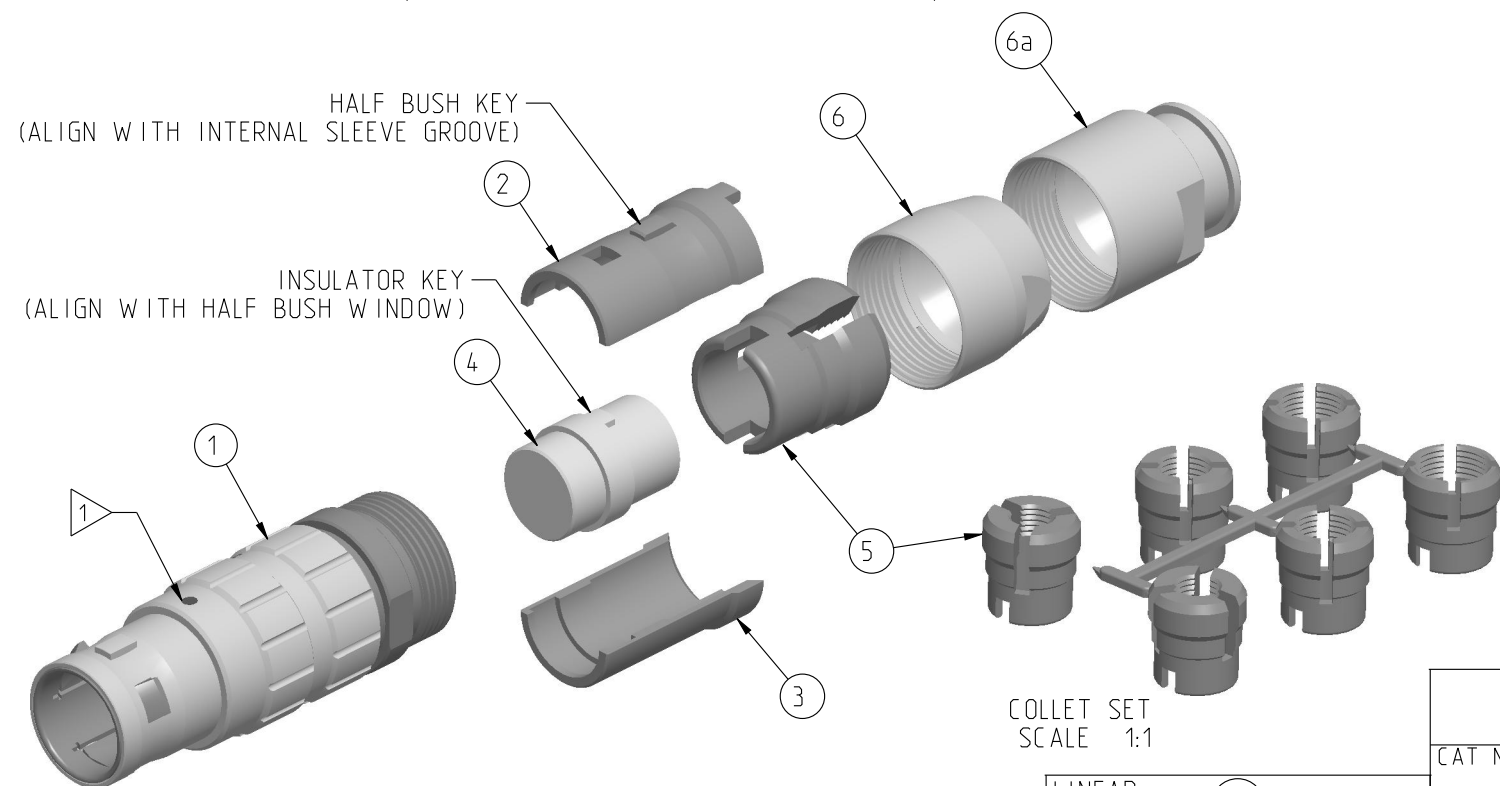


(ASSEMBLED VIEW FOR INFORMATION ONLY)



MATING SIDE VIEW

PART LIST	
ITEM NO.	DESCRIPTION
1	SLEEVE
2	HALF BUSHING WITH WINDOW
3	HALF BUSHING WITHOUT WINDOW
4	INSULATOR
5	Ø3.5-Ø9.7 CABLE COLLET (CHOOSE PER CABLE SIZE)
6	STANDARD BACK NUT
6a	BACK NUT FOR PROTECTIVE BOOT (OPTIONAL)

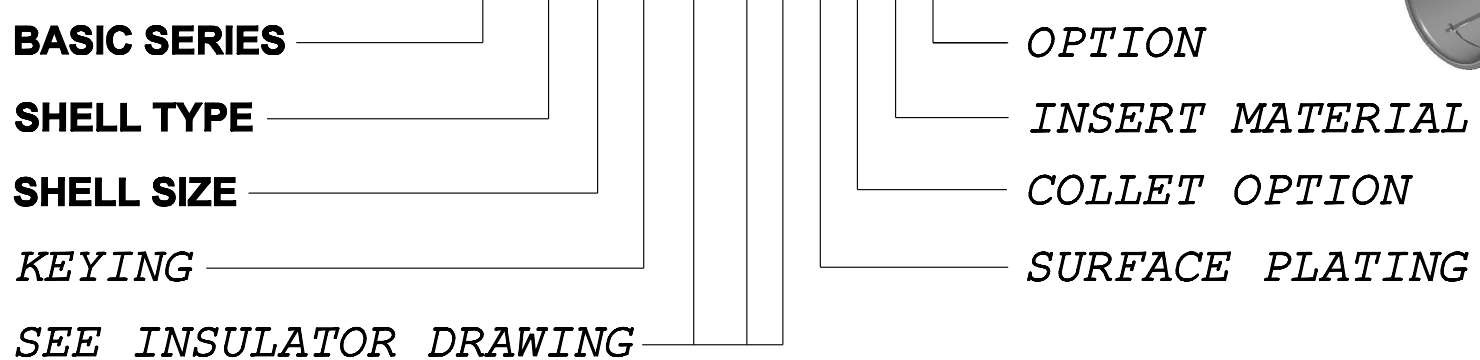


SCALE 3:2

	TOOLS (JAW DIMENSION)	ADVISED TORQUE IN Nm
1	13	1.5
2	14	-

**CATALOG NUMBER DESCRIPTION**

**JBX FD 2 XXXXX D S X**



DRAWING TITLE <b>JBX, SIZE 2, STRAIGHT PLUG</b>		DRAWN: SKV 01-08-15	
CAT NO. <b>JBXFD2</b>		CHKD : EV 01-08-15	
CAGE NO: 09922	SIZE: C	DSGN : EV 01-08-15	
CUSTOMER		MFG : DH 01-08-15	
		QC : BB 01-08-15	
INTERPRET THIS DRAWING IN ACCORDANCE WITH ASME Y14.5M - 1994.		DRAWING SCALE: 4:1	
		DRAWING NO. <b>JBXFD2C</b> REV <b>A</b>	
www.souriau.com		1 OF 1	

THE INFORMATION CONTAINED IN THIS DRAWING IS CONFIDENTIAL AND MAY NOT BE DISCLOSED WITHOUT WRITTEN CONSENT FROM SOURIAU USA, INC.

THIS DRAWING IS A CONTROLLED DOCUMENT FOR SOURIAU USA, INC. IT IS SUBJECT TO CHANGE WITHOUT NOTICE. CONTACT THE DOCUMENT CONTROL CENTER FOR THE LATEST REVISION.

THE INFORMATION CONTAINED IN THIS DRAWING IS CONFIDENTIAL AND MAY NOT BE DISCLOSED WITHOUT WRITTEN CONSENT FROM SOURIAU USA, INC.

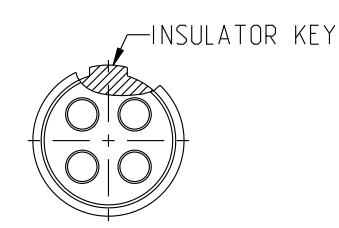
2

1

DWG. NO.  
JBX2INSMSC

**MALE INSULATOR, SOLDER CONTACT**

CONTACT LAYOUT	02	03																											
FRONT SIDE VIEW																													
REAR SIDE VIEW																													
CONTACT																													
ISO VIEW																													
CONTACT	<table border="1"> <tr><td>ØC</td><td>2</td><td>1.6</td></tr> <tr><td>ØF</td><td>1.9</td><td>1.5</td></tr> <tr><td>MAX. AWG</td><td>16</td><td>18</td></tr> <tr><td>MAX. CURRENT RATING (A)</td><td>30</td><td>17</td></tr> <tr><td>CONTACT RESISTANCE (mΩ)</td><td>2.5</td><td>2.5</td></tr> </table>	ØC	2	1.6	ØF	1.9	1.5	MAX. AWG	16	18	MAX. CURRENT RATING (A)	30	17	CONTACT RESISTANCE (mΩ)	2.5	2.5	<table border="1"> <tr><td>NUMBER OF CAVITY</td><td>2</td><td>3</td></tr> <tr><td>MAX. CURRENT RATING</td><td>30</td><td>17</td></tr> <tr><td>TEST VOLTAGE (Vrms)</td><td>2100</td><td>1700</td></tr> <tr><td>WORKING VOLTAGE (Vdc/Vrms)</td><td>1000/700</td><td>830/560</td></tr> </table>	NUMBER OF CAVITY	2	3	MAX. CURRENT RATING	30	17	TEST VOLTAGE (Vrms)	2100	1700	WORKING VOLTAGE (Vdc/Vrms)	1000/700	830/560
ØC	2	1.6																											
ØF	1.9	1.5																											
MAX. AWG	16	18																											
MAX. CURRENT RATING (A)	30	17																											
CONTACT RESISTANCE (mΩ)	2.5	2.5																											
NUMBER OF CAVITY	2	3																											
MAX. CURRENT RATING	30	17																											
TEST VOLTAGE (Vrms)	2100	1700																											
WORKING VOLTAGE (Vdc/Vrms)	1000/700	830/560																											

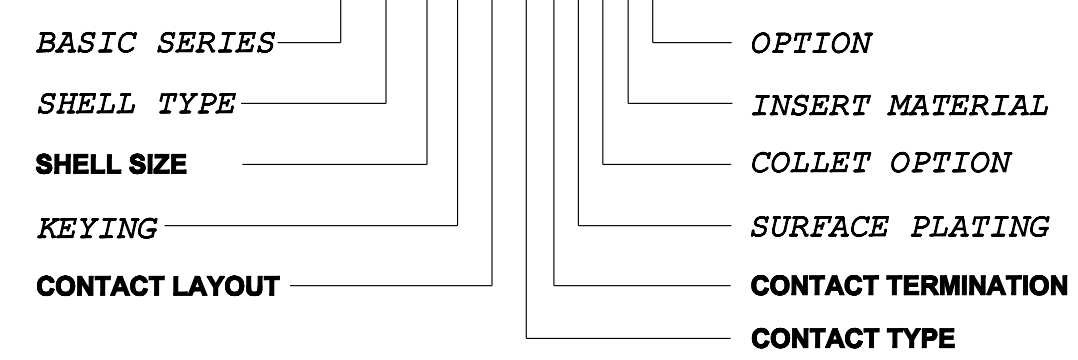


**CONTACT TYPE : M (MALE)**  
**CONTACT TERMINATION : S (SOLDER)**

**MATERIAL :**  
 CONTACT: BRASS  
 CLIP: COPPER ALLOY  
 INSULATOR: PEEK  
 FINISH:  
 CONTACTS: GOLD

**CATALOG NUMBER DESCRIPTION**

**JBXXX 2 XYYMS XXXX**



B	REVISED PER ECN 12286	RSK 06-10-15	EV 06-10-15
A	RELEASED PER ECN 12264	SKV 03-10-15	EV 03-10-15
REV	DESCRIPTION	BY DATE	CHKD DATE

DRAWING TITLE  
**JBX, SIZE 2, MALE INSULATOR, SOLDER CONTACT**

CAT NO. **JBX2INSMSC**

LINEAR MEASURE:  mm (INCH)	
THIRD ANGLE PROJECTION	
TOLERANCES UNLESS OTHERWISE SPECIFIED	
No. OF PLACES	mm [INCH]
ONE PLACE	±3 [±.1]
TWO PLACES	±0.5 [±.02]
THREE PLACES	±0.25 [±.010]
ANGLES ±1°	

CAGE NO: 09922    SIZE: B

**CUSTOMER**

INTERPRET THIS DRAWING IN ACCORDANCE WITH ASME Y14.5M - 1994.

**SOURIAU**

WWW.SOURIAU.COM

APPROVAL	DRAWN: SKV 02-02-15
	CHKD : EV 02-02-15
	DSGN : EV 02-02-15
	MFG : DH 02-02-15
	QC : BB 02-02-15
	DRAWING SCALE: NA
	DRAWING NO. REV
	JBX2INSMSC B
	1 OF 3

B

A

2

1

PRO-E

THIS DRAWING IS A CONTROLLED DOCUMENT FOR SOURIAU USA, INC. IT IS SUBJECT TO CHANGE WITHOUT NOTICE. CONTACT THE DOCUMENT CONTROL CENTER FOR THE LATEST REVISION.

THE INFORMATION CONTAINED IN THIS DRAWING IS CONFIDENTIAL AND MAY NOT BE DISCLOSED WITHOUT WRITTEN CONSENT FROM SOURIAU USA, INC.

DWG. NO.  
JBX2INSMSC

		2				1	
CONTACT LAYOUT		04	05	06	07	08	10
FRONT SIDE VIEW							
REAR SIDE VIEW							
CONTACT							
ISO VIEW							
CONTACT	ØC	1.3	1.3	1.3	1.3	0.9	0.9
	ØF	1.1	1.1	1.1	1.1	0.8	0.8
	MAX. AWG	20	20	20	20	24	24
	MAX. CURRENT RATING (A)	15	15	15	15	10	10
INSULATOR	CONTACT RESISTANCE (mΩ)	3	3	3	3	3.5	3.5
	NUMBER OF CAVITY	4	5	6	7	8	10
	MAX. CURRENT RATING	15	14	12	11	10	8
	TEST VOLTAGE (Vrms)	2400	1900	1900	1500	1700	1700
WORKING VOLTAGE (Vdc/Vrms)	1000/700	900/630	900/630	730/500	830/560	830/560	

DRAWING TITLE  
**JBX, SIZE 2, MALE INSULATOR, SOLDER CONTACT**

CAT. NO. **JBX2INSMSC**

LINEAR MEASURE:		mm (INCH)
THIRD ANGLE PROJECTION		
TOLERANCES UNLESS OTHERWISE SPECIFIED		
No. OF PLACES	mm [INCH]	
ONE PLACE	±3 [±.1]	
TWO PLACES	±0.5 [±.02]	
THREE PLACES	±0.25 [±.010]	
ANGLES ±1°		

CAGE NO: 09922

SIZE: B

**CUSTOMER**

**SOURIAU**

[WWW.SOURIAU.COM](http://WWW.SOURIAU.COM)

INTERPRET THIS DRAWING IN ACCORDANCE WITH ASME Y14.5M - 1994.

APPROVAL	DRAWN: SKV	02-02-15
	CHKD : EV	02-02-15
	DSGN : EV	02-02-15
	MFG : DH	02-02-15
	QC : BB	02-02-15

DRAWING SCALE: NA	
DRAWING NO.	REV
JBX2INSMSC	B
2 OF 3	

**B**

**A**

2

1

PRO-E

THIS DRAWING IS A CONTROLLED DOCUMENT FOR SOURIAU USA, INC. IT IS SUBJECT TO CHANGE WITHOUT NOTICE. CONTACT THE DOCUMENT CONTROL CENTER FOR THE LATEST REVISION.

THE INFORMATION CONTAINED IN THIS DRAWING IS CONFIDENTIAL AND MAY NOT BE DISCLOSED WITHOUT WRITTEN CONSENT FROM SOURIAU USA, INC.

2

1

DWG. NO. JBX2INSMSC

CONTACT LAYOUT	12	16	18	19
FRONT SIDE VIEW				
REAR SIDE VIEW				
CONTACT				
ISO VIEW				

	CONTACT			
	12	16	18	19
ØC	0.7	0.7	0.7	0.7
ØF	0.81	0.81	0.81	0.81
MAX. AWG	22	22	22	22
MAX. CURRENT RATING (A)	7	7	7	7
CONTACT RESISTANCE (mΩ)	5	5	5	5
NUMBER OF CAVITY	12	16	18	19
INSULATOR	MAX. CURRENT RATING	7	6	5
	TEST VOLTAGE (Vrms)	1700	1500	1400
	WORKING VOLTAGE (Vdc/Vrms)	830/560	730/500	660/460

DRAWING TITLE  
**JBX, SIZE 2, MALE INSULATOR, SOLDER CONTACT**

CAT NO. **JBX2INSMSC**

CAGE NO: 09922	SIZE: B	APPROVAL	DRAWN: SKV 02-02-15
<b>CUSTOMER</b>	<b>SOURIAU</b>		CHKD : EV 02-02-15
			DSGN : EV 02-02-15
			MFG : DH 02-02-15
			QC : BB 02-02-15
INTERPRET THIS DRAWING IN ACCORDANCE WITH ASME Y14.5M - 1994.		DRAWING SCALE: NA	
<b>WWW.SOURIAU.COM</b>		DRAWING NO. REV	
		JBX2INSMSC B	
		3 OF 3	

LINEAR MEASURE:	
THIRD ANGLE PROJECTION	
TOLERANCES UNLESS OTHERWISE SPECIFIED	
No. OF PLACES	mm [INCH]
ONE PLACE	±3 [±.1]
TWO PLACES	±0.5 [±.02]
THREE PLACES	±0.25 [±.010]
ANGLES ±1°	

B

A

2

1

PRO-E

## X-ON Electronics

Largest Supplier of Electrical and Electronic Components

*Click to view similar products for [Circular Push Pull Connectors](#) category:*

*Click to view products by [Sunbank](#) manufacturer:*

Other Similar products are found below :

[FEA.1B.308.CYCD72Z](#) [D38999/20ZC8JA](#) [D38999/20ZG39BN](#) [D38999/20ZG41PN-LC](#) [D38999/20ZH21SA](#) [D38999/20ZH53SA](#)  
[D38999/20ZJ24SA](#) [D38999/20ZJ29PA-LC](#) [D38999/20ZJ43HA](#) [D38999/20ZJ43PA-LC](#) [D38999/20ZJ61PA-LC](#) [D38999/24ZF11SA-LC](#)  
[D38999/24ZF32BA](#) [D38999/24ZF32PA-LC](#) [D38999/24ZF32SA-LC](#) [D38999/24ZF35BA](#) [D38999/24ZF35SA-LC](#) [EXG.00.250.NTNY](#)  
[FFA.00.250.CTAZ](#) [FFA.1S.302.CLAZ](#) [FFA.1Y.410.CTAC52](#) [FFA.2S.310.ZLA](#) [FFG.1B.302.CLAD52Z](#) [FFG.1B.304.CLAD42Z](#)  
[FFG.1B.304.CLAD72Z](#) [FFG.1B.308.CLAD42Z](#) [FGA.1B.304.CLAD62Z](#) [FGA.1B.304.CYCD72Z](#) [FGA.1B.305.CLAD76](#)  
[FGA.1B.306.CYCD72](#) [FGA.1B.307.CYCD72Z](#) [FGA.1B.308.CLAD76Z](#) [FGA.1B.308.CYCD42Z](#) [FGA.1B.308.CYCD52Z](#)  
[FGA.1B.308.CYCD72Z](#) [FGA.1B.310.CLAD42](#) [FGA.1B.310.CLAD52Z](#) [FGA.1B.316.CLAD42](#) [FGA.1B.316.CLAD62Z](#)  
[FGA.1B.316.CLAD76](#) [FGB.0B.307.CYCD31Z](#) [FGB.1B.302.CLAD72](#) [FGB.1B.303.CYCD62](#) [FGB.1B.305.CLAZ](#) [FGB.1B.307.CYCD62Z](#)  
[FGB.1B.316.CLAD42](#) [FGC.0B.309.CLAD56](#) [FGC.1B.304.CLAD52Z](#) [FGC.1B.305.CLAD52Z](#) [FGC.1B.308.CLAD42](#)