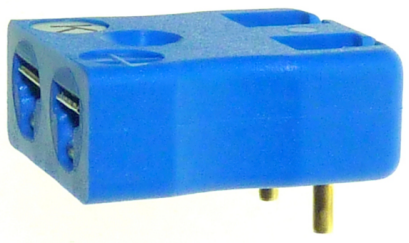




TEMPERATURE & PROCESS TECHNOLOGY

# JIS Miniature Thermocouple PCB Mounting Socket



*'Specially designed for PCB mounting'*

**About Labfacility**

Formed in 1971, Labfacility specialize in the field of Temperature and Process Measurement.

We are the largest UK manufacturer of both temperature sensors and thermocouple connectors

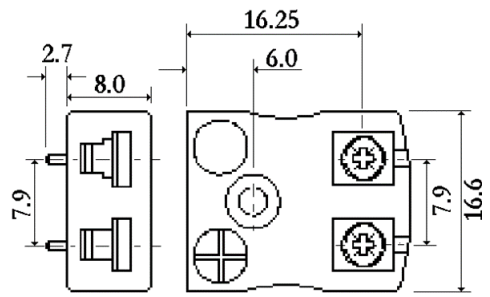
**Quality & Service**

Quality and Service are key elements in the continued growth of Labfacility.

Technical support is always freely available from our experienced technical sales teams and the company has ISO9001 accreditation.

- Versatile, high quality, circuit board mounting miniature socket
- Specially designed for PCB mounting
- Solid pins for direct PCB mount, 1.3mm diameter pins x 7.9mm pitch
- Provision for cold junction sensor
- Available in Thermocouple types K, J
- For Types K, J contacts are made from true Thermocouple alloys
- Colour coded in accordance with JIS specification
- Maximum continuous operating temperature 220 deg°C

T/C Type	Colour Code (JIS)	+Positive (alloy type)	-Negative (alloy type)	Labfacility Code	Farnell Code
K	Blue	+Nickel Chromium	-Nickel Alloy	JM-K-PCB	234-7189
J	Yellow	+Iron	-Copper Nickel	JM-J-PCB	234-7188



FAR055/0613 JIS Miniature Thermocouple PCB Mounting Socket

**Contact Details**

Email [sales@labfacility.com](mailto:sales@labfacility.com)

Website [www.labfacility.com](http://www.labfacility.com)



## X-ON Electronics

Largest Supplier of Electrical and Electronic Components

*Click to view similar products for [labfacility manufacturer](#):*

Other Similar products are found below :

[CT-Z4-PFA-K-2](#) [FC-131](#) [MD-ISK-S45-250-P5-IEC](#) [MC-ISK-S60-300-KNS-I](#) [RAA-S3A-60-100-P1-2.0-C1-T](#) [WT-304-ANSI X 100M](#) [IM-B-PCB](#) [XF-945-FAR](#) [XF-946-FAR](#) [XF-947-FAR](#) [XF-949-FAR](#) [XF-955-FAR](#) [XF-960-FAR](#) [XF-962-FAR](#) [XF-966-FAR](#) [XF-989-FAR](#) [XF-1074-FAR](#) [XF-1216-FAR](#) [XF-1172-FAR](#) [XF-1222-FAR](#) [XF-1238-FAR](#) [XF-1190-FAR](#) [XF-1109-FAR](#) [XF-1110-FAR](#) [XF-1140-FAR](#) [XF-1111-FAR](#) [XF-1112-FAR](#) [XF-1136-FAR](#) [XF-1149-FAR](#) [XF-1150-FAR](#) [XF-1151-FAR](#) [XF-1146-FAR](#) [XF-1245-FAR](#) [XF-1249-FAR](#) [XF-1113-FAR](#) [XF-1178-FAR](#) [XF-1180-FAR](#) [XF-1183-FAR](#) [XF-1184-FAR](#) [XF-1255-FAR](#) [XF-1258-FAR](#) [XF-1265-FAR](#) [XF-1266-FAR](#) [XF-1274-FAR](#) [XF-1277-FAR](#) [XF-1283-FAR](#) [XF-1288-FAR](#) [XF-1293-FAR](#) [XF-1300-FAR](#) [XF-1307-FAR](#)