

MICRO SWITCH

FREEMONT ILLINOIS, U.S.A.
A DIVISION OF HONEYWELL
FED. MFG. CODE 91929

SWITCH-BASIC

CATALOG LISTING

YA-1R2416-A42

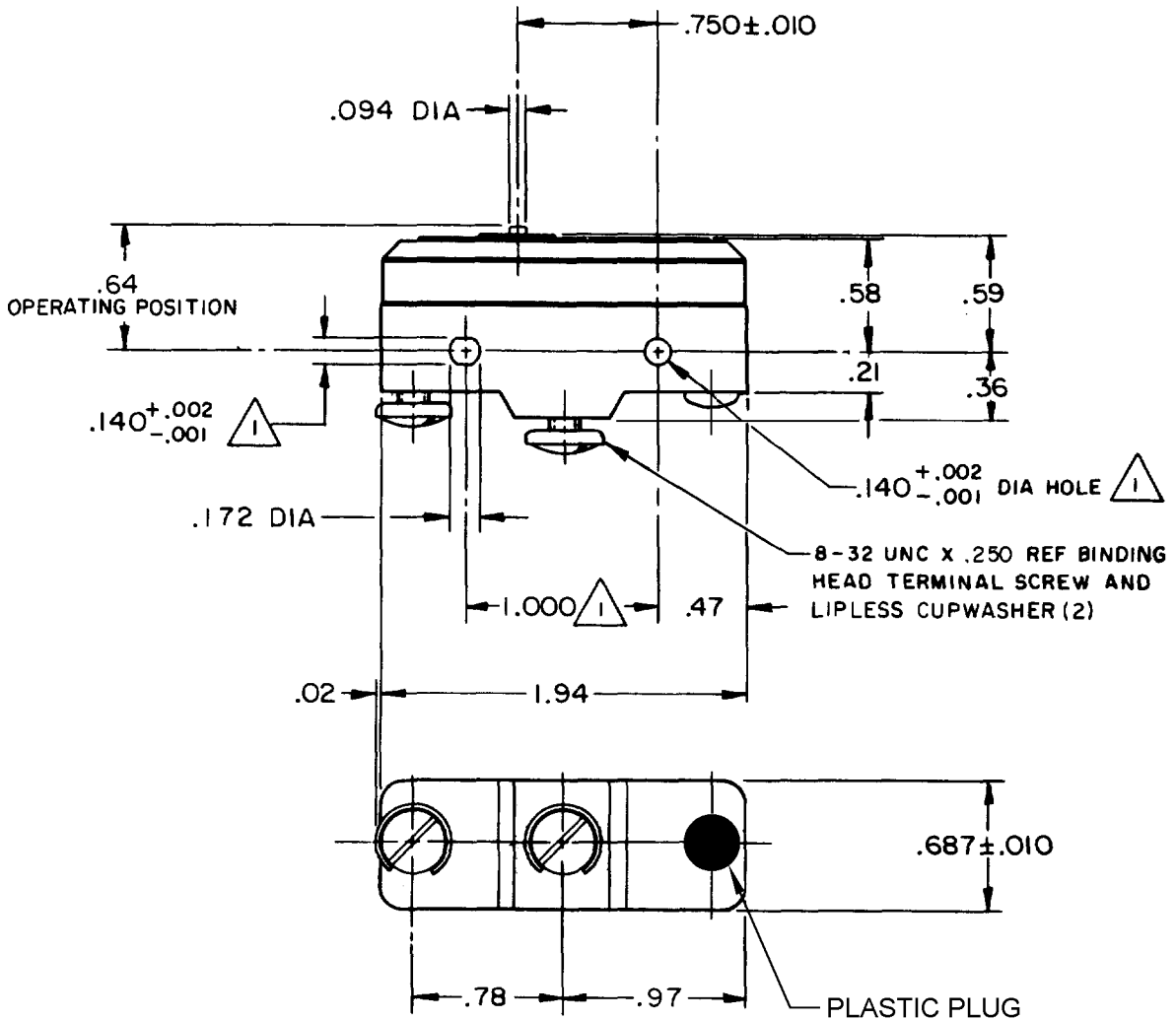
ADF2800

CATALOG LISTING
YA-1R2416-A42
PAGE 1 OF 1
ISSUE 7
M
PSR 12SEP07
RELEASE NO. PR-11226
REPLACES X71572-YA

REVISIONS

| | | | |
|---|----------|-------|------------|
| A | CO51554 | T S K | 21 JULY 82 |
| B | CO-77589 | MAM | 29 MAR 94 |
| C | CO93346 | DLT | 28 AUG 98 |
| D | 0000566 | CSL | 17 JUN 03 |
| E | 0017742 | TSG | 09 JAN 06 |
| F | 0033746 | JA | 12 SEP 07 |

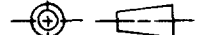
09 JAN 06
RJ
CHECK
25 MAY 82
C E B
K A G 19 MAY 82
FO-52848-A
DRAWN



NOTES
 1 MOUNTING HOLES WILL ACCEPT PINS OR SCREWS OF .139 MAX DIA ON 1.000 ± .002 CENTERS
 2 - SWITCH TO WITHSTAND TEMPERATURE OF 250° F

THIS DRAWING COVERS A PROPRIETARY ITEM AND IS THE PROPERTY OF MICRO SWITCH, A DIVISION OF HONEYWELL. THIS DRAWING IS NOT TO BE COPIED OR USED WITHOUT THE APPROVAL OF MICRO SWITCH.

THIRD ANGLE PROJECTION



CHARACTERISTICS

OPERATING FORCE ----- 13-19 OZ
 DIFFERENTIAL FORCE ----- 1 1/2-6 OZ
 RELEASE FORCE ----- 10 OZ MIN
 DIFFERENTIAL TRAVEL ----- .004-.006
 OVERTRAVEL ----- .010 MIN

ELECTRICAL DATA

CONTACT ARRANGEMENT
S P N O

L33 20A-125, 250 OR 480 VAC
 1HP-125 VAC; 2HP-250 VAC
 0.3A-125 VDC; 0.15A-250 VDC

L288
L308
L310
L315

CE 05
 20(3)A 250V ~ T85 5E4

SCALE FULL

DO NOT SCALE PRINT

TOLERANCES
 APPLY TO DESIGN UNITS. CONVERSIONS ARE ONLY FOR REFERENCE. UNLESS NOTED, TOLERANCES ARE ±

| | DM. | TOL. | DM. | TOL. |
|--------------|---------|----------|---------|----------|
| | mm | mm/in | in | mm/in |
| NO PLACES | X | 1/64 | X | 0.01/03 |
| ONE PLACE | X,X | 0.4/018 | X,X | 0.38/015 |
| TWO PLACES | X,X,X | 0.16/008 | X,X,X | 0.13/005 |
| THREE PLACES | X,X,X,X | | X,X,X,X | |
| ANGLES | | | | |

DESIGN UNITS SI METRIC US CUSTOMARY

WEIGHT .063 LB

X-ON Electronics

Largest Supplier of Electrical and Electronic Components

Click to view similar products for [Basic / Snap Action Switches](#) category:

Click to view products by [Honeywell](#) manufacturer:

Other Similar products are found below :

[83228001](#) [01.098.1358.1](#) [602EN1-6B](#) [602EN532](#) [602EN535-RB](#) [602HE5-RB1](#) [604HE162](#) [604HE223-6B](#) [624HE17-RB](#) [6HM89](#) [6PA78-JM](#)
[6SE1](#) [6SX1-H58](#) [70500840](#) [MBD5B1](#) [MBH2731](#) [73-316-0012](#) [79211759](#) [79211923](#) [79218589](#) [7AS12](#) [ML-1155](#) [ML-1376](#) [831010C3.0](#)
[831060C3.TL](#) [831090C2.EL](#) [83131904](#) [84212012](#) [8AS239](#) [8HM73-3](#) [903VB1-PG](#) [914CE1-6G](#) [PL-100](#) [11SM1077-H4](#) [11SM1077-H58](#)
[11SM1-TN107](#) [11SM405](#) [11SM703-T](#) [11SM8423-H2](#) [11SX37-T](#) [11SX48-H58](#) [11SX55-H58](#) [11SM2442-T](#) [11SM76-T](#) [11SM77-H58](#)
[11SM77-T](#) [11SM863-T](#) [11SM866](#) [11SX47-H58](#) [A7CN-1M-1-LEFT](#)