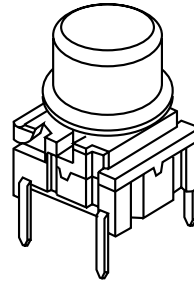


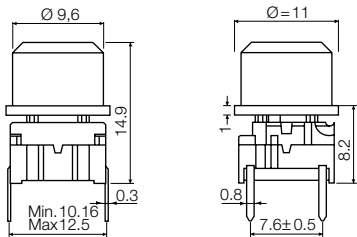
multimec® 3F + 1D/1E/1F



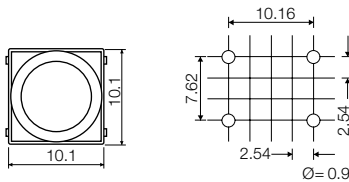
Technical Data:

- through-hole or SMD
- 50mA/24VDC
- single pole/momentary
- 10.000.000 operations life time
- IP67 sealing
- temperature range:
low temp: -40/+115°C
high temp: -40/+160°C

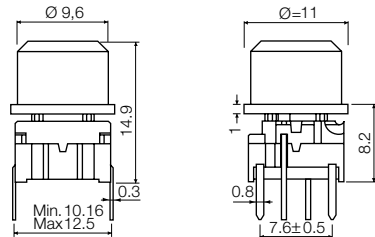
Dimensions (through-hole)



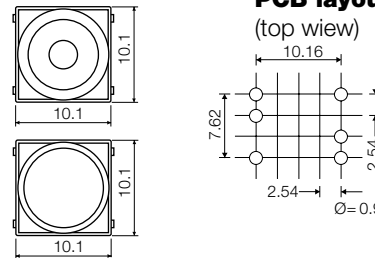
PCB layout



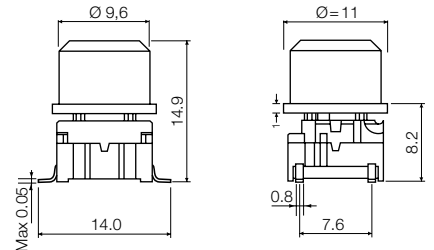
Dimensions (w/LED)



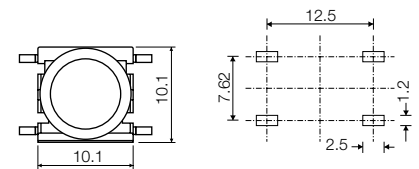
PCB layout (top view)




Dimensions (SMD)



PCB layout






HOW TO ORDER

| | | | | | | | | |
|---------------|--------------------------|--------------------------|----------|--------------------------|---|--------------------------|--------------------------|----------------------------|
| 3 F | <input type="checkbox"/> | <input type="checkbox"/> | + | <input type="checkbox"/> | <input type="checkbox"/> | <input type="checkbox"/> | <input type="checkbox"/> | |
| Switch | Mounting | L 6 low temp. | | 1 D | Cap | 00 blue | 30 ultra blue | 50 metal dark blue |
| | T through-hole | H 9 high temp. | | | | 02 green | 40 dusty blue | 53 metal light grey |
| | S surface mount | | | |  | 03 grey | 42 aqua blue | 57 metal dark grey |
| | | | | | | 04 yellow | 32 mint green | 58 metal bordeaux |
| | | | | | | 06 white | 33 tele grey | |
| | | | | | | 08 red | 34 melon | |
| | | | | | | 09 black | 38 noble red | |

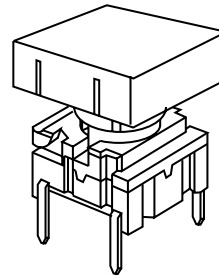
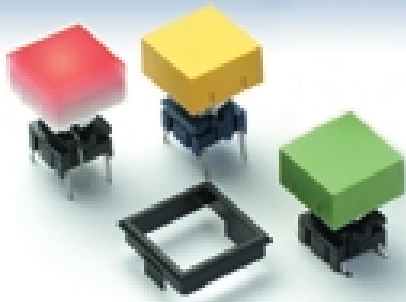
Standard versions:

3FTL6
3FTH9
3FSH9
3FSH9R

| | | | | | | | |
|---------------|-----------------------|--------------------------|----------|--------------------------|--|--------------------------|--------------------------|
| 3 F | T | <input type="checkbox"/> | + | <input type="checkbox"/> | <input type="checkbox"/> | <input type="checkbox"/> | <input type="checkbox"/> |
| Switch | Mounting | L 6 low temp. | | LED | Cap 1D | 1 1 | Lens |
| | T through-hole | H 9 high temp. | | 00 blue |  | transparent | |
| | | | | 20 green | Cap 1E | 00 blue | 1 transparent |
| | | | | 40 yellow |  | 02 green | 2 green |
| | | | | 80 red | Cap 1F | 03 grey | 4 yellow |
| | | | | 2040 green/yellow |  | 04 yellow | 8 red |
| | | | | 8020 red/green | | 06 white | |
| | | | | 8040 red/yellow | | 08 red | |
| | | | | | | 09 black | |

Ordering example: 3FTL620 + 1E032

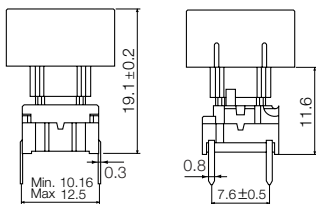
multimec® 3F + 1K + 2K



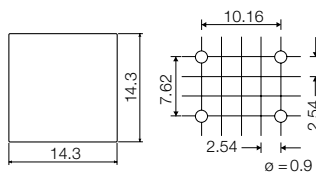
Technical Data:

- through-hole or SMD
- 50mA/24VDC
- single pole/momentary
- 10.000.000 operations life time
- IP67 sealing
- temperature range:
low temp: -40/+115°C
high temp: -40/+160°C

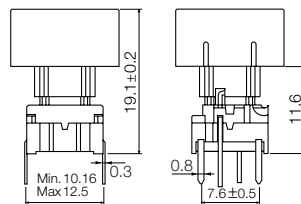
Dimensions (through-hole)



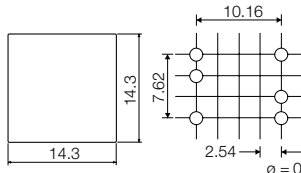
PCB layout



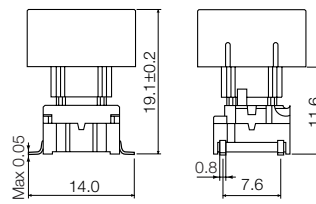
Dimensions (w/LED)



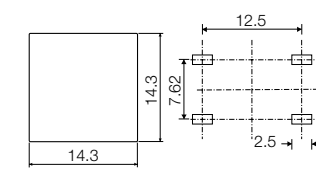
PCB layout (top view)



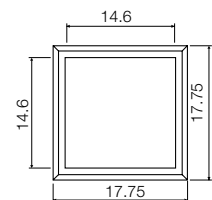
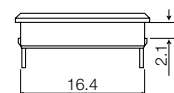
Dimensions (SMD)



PCB layout



Dimensions (Bezel) (Optional)



HOW TO ORDER

| | | | | | | | | |
|---------------|--------------------------|---|---|------------|--|---|--------------|---|
| 3 F | <input type="checkbox"/> | <input type="checkbox"/> | + | 1 K | 1 6 | + | 2 K | <input type="checkbox"/> |
| Switch | Mounting | L 6 low temp. H 9 high temp. | | Cap | 00 blue 02 green 03 grey 04 yellow 06 white 08 red 09 black | | Bezel | 03 grey 06 white 08 red 09 black |

Standard versions:

3FTL6
3FTH9
3FSH9
3FSH9R

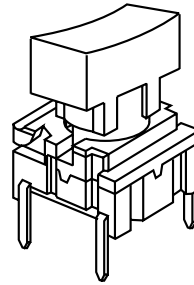
| | | | | | | | | |
|---------------|-----------------------|---|--|---|------------------------|---|--------------|---|
| 3 F | T | <input type="checkbox"/> | <input type="checkbox"/> | + | 1 K 1 1 1 6 | + | 2 K | <input type="checkbox"/> |
| Switch | Mounting | L 6 low temp. H 9 high temp. | LED | | Cap transparent | | Bezel | 03 grey 06 white 08 red 09 black |
| | T through-hole | | 23 green 44 yellow 88 red | | | | | |

Standard versions:

3FTL622
3FTL644
3FTL688

Ordering example: 3FTL688 + 1K1116

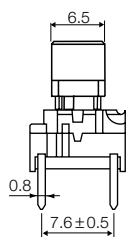
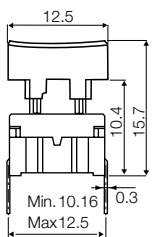
multimec® 3F + 1P/1Q/1R



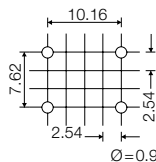
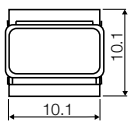
Technical Data:

- through-hole or SMD
- 50mA/24VDC
- single pole/momentary
- 10.000.000 operations life time
- IP67 sealing
- temperature range:
low temp: -40/+115°C
high temp: -40/+160°C

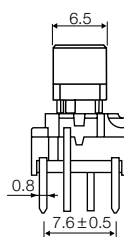
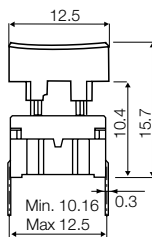
Dimensions (through-hole)



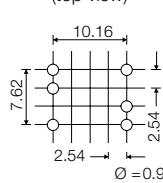
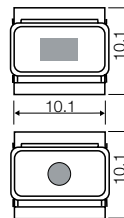
PCB layout



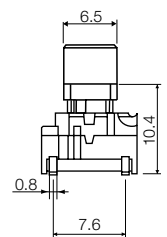
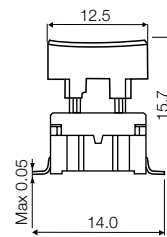
Dimensions (w/LED)



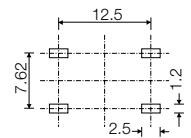
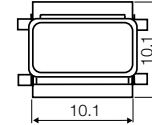
PCB layout (top view)



Dimensions (SMD)



PCB layout



How to order

3 F

Switch



Mounting

T through-hole

S surface mount



L 6 low temp.
H 9 high temp.

+

1 P

Cap



00 blue
02 green
03 grey
04 yellow
06 white
08 red
09 black

Standard versions:

3FTL6
3FTH9
3FSH9
3FSH9R

3 F

Switch



Mounting

T through-hole



L 6 low temp.
H 9 high temp.

+



LED

00 blue
20 green
40 yellow
80 red
2040 green/yellow
8020 red/green
8040 red/yellow



1Q



00 blue
03 grey
08 red
09 black

1

Lens

1 transparent

Standard versions:

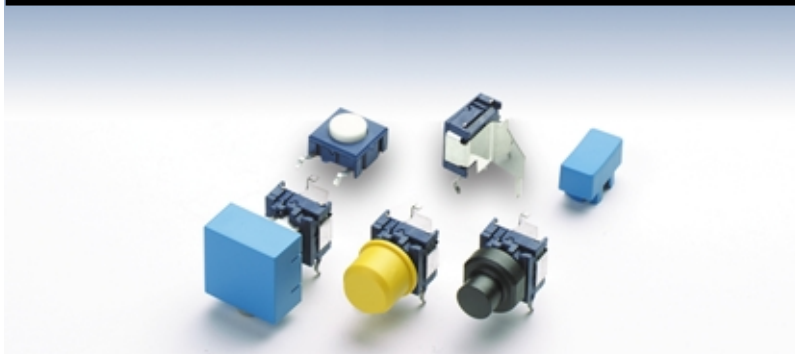
3FTL600
3FTL620
3FTL640
3FTL680
3FTL62040
3FTL68020
3FTL68040

1R

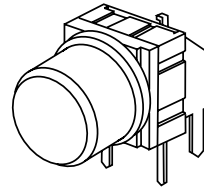


Ordering example: 3 FTL680 + 1Q091

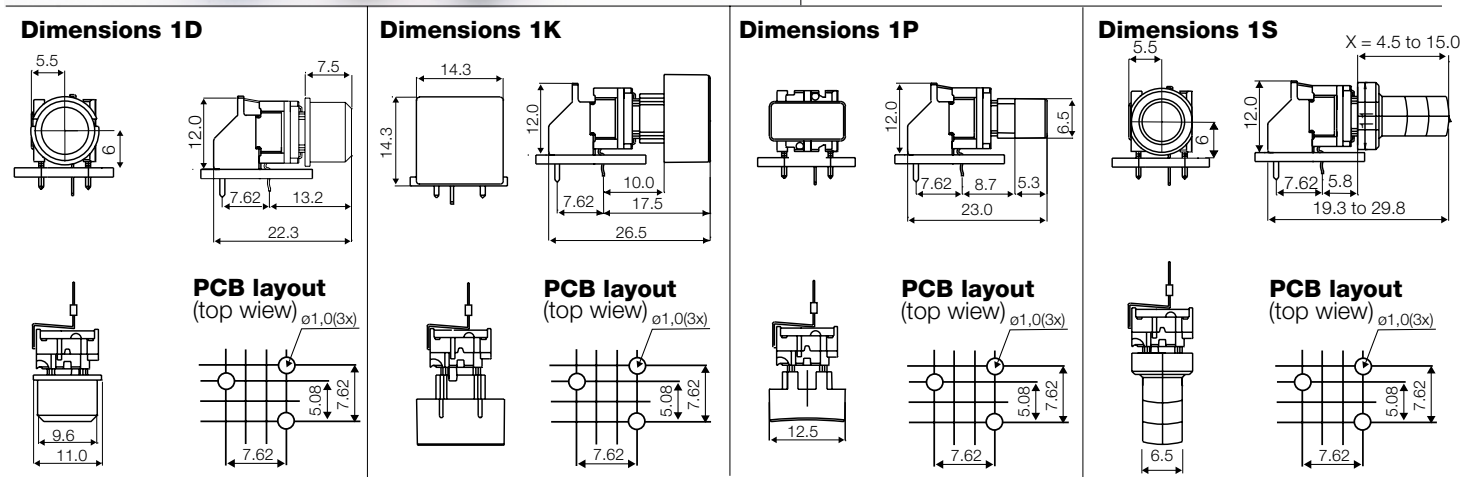
multimec® RAS + 1D/1K/1P/1S



Technical Data:



- through-hole only
- 50mA/24VDC
- single pole/momentary
- 10.000.000 operations life time
- IP67 sealing
- temperature range:
low temp: -40/+115°C



HOW TO ORDER

| | | | | | | | | |
|---------------|-----------------------|----------------------|---------------------|------------------------------------|------------------|------------------|----------------------|----------------------------|
| 3 F | T | L 6 | R A S + | 1 D | Cap | 00 blue | 30 ultra blue | 50 metal dark blue |
| Switch | Mounting | L 6 low temp. | Right angle support | | | 02 green | 40 dusty blue | 53 metal light grey |
| | T through-hole | | | | | 03 grey | 42 aqua blue | 57 metal dark grey |
| | | | | | | 04 yellow | 32 mint green | 58 metal bordeaux |
| | | | | | | 06 white | 33 tele grey | |
| | | | | | | 08 red | 34 melon | |
| | | | | | | 09 black | 38 noble red | |
| | | | | 1 P | Cap | 00 blue | | |
| | | | | | | 03 grey | | |
| | | | | | | 08 red | | |
| | | | | | | 09 black | | |
| | | | | 1 K 1 6 + 2 K | Cap | 00 blue | Bezel | 03 grey |
| | | | | | | 02 green | | 06 white |
| | | | | | | 03 grey | | 08 red |
| | | | | | | 04 yellow | | 09 black |
| | | | | | | 06 white | | |
| | | | | | | 08 red | | |
| | | | | | | 09 black | | |
| | | | | 1 S 0 9 - . | Cap black | H | X * | |
| | | | | | | 16.0 | 8.5 | |
| | | | | | | 19.0 | 11.5 | |
| | | | | | | 22.5 | 15.0 | |

Standard versions:
3FTL6RAS, 3CTL6RAS,

*Any cap height X from 8.5 to 15.0 mm is available. Please order 1S09-H, where H = X+7.5 mm
Min. order Qty for custom heights is 2.000 pcs. A start-up charge will apply.
3CTL6 also available as right angle switch 3CTL6RAS. Please see multimec basic switch modules.

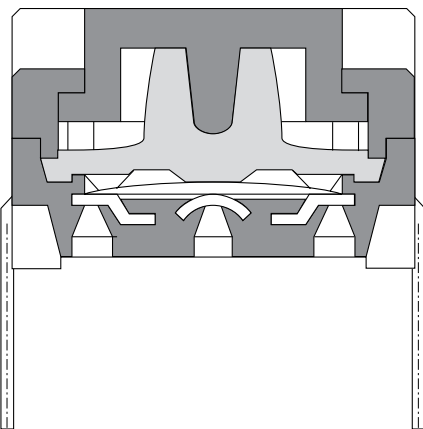
Ordering example: 3FTL6RAS + 1K0016 + 2K03

| Through-hole Version | | | | | | |
|--|------------------|----------------------|----------------------|--|-------------------------------------|---------------------------|
| 3A | 3C | 3E | 3F | 3F | 3F | 3F |
| For 1A/1B/1M | w/LED for 1C/1H | | | For 1D/1K/1N/1P/1S/1T/1U/1V/1X/1GA/1GC | w/LED for 1E/1F/1N/1Q/1R/1S/1X | w/LED for 1K1116/1T/1U/1V |
| | | | | | | |
| Standard Versions | | | | | | |
| 3ATL6 3ATH9 | 3ATL600/20/40/80 | 3CTL6/3CTL9 3CTH9 | 3ETL9-H* 3ETH9-H* | 3FTL6 3FTH9 | 3FTL600/20/40/80/ 2040/8020/8040 | 3FTL623/44/88 |
| * 3E available in 6 standard heights: 08.0, 09.5, 10.4, 11.0, 12.0, 15.0 mm Other heights between 08.0 and 15.0 mm are available upon request | | | | | | |
| Specials: Gold contacts, quiet version and actuation force other than 3.0N | | | | | | |

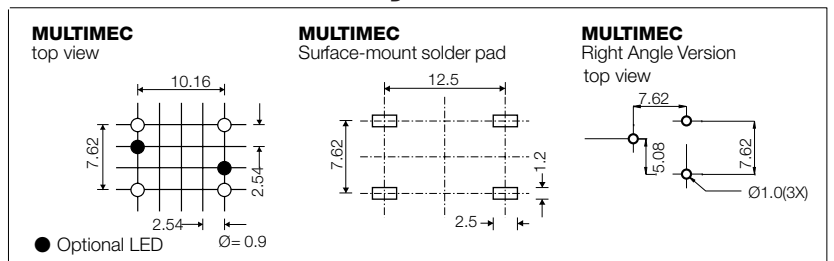
| Surface Mount Versions | | | |
|------------------------|--------------|--------------|--|
| 3A | 3C | 3E | 3F |
| | | | |
| 3ASH9/3ASH9R | 3CSH9/3CSH9R | 3ESH9/3ESH9R | 3FSH9 / 3FSH9R |
| For 1A/1B/1M | | | For 1D/1K/1N/1P/1S/1T/1U/1V/1X/1GA/1GC |

| Right Angle Versions | |
|----------------------|-----------------|
| 3C | 3F |
| | |
| 3CTL6RAS | 3FTL6RAS |
| | For 1D/1K/1P/1S |

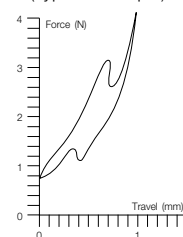
multimec® Cross Section



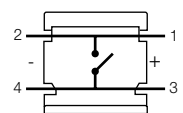
Recommended PCB layout



Operating Force
(Typical example)



Circuit diagram



DIMENSIONS (mm) Unless otherwise specified, all tolerances ± 0.2

| | Low Temperature Versions | | High Temperature Versions | |
|--|---|----------------------------------|---|----------------------------------|
| | Silver | Gold | Silver | Gold |
| Electrical Specifications | | | | |
| Contact resistance | <30 mΩ - typically 10mΩ | | | |
| Insulation resistance | >10M Ω | | | |
| Recommended load | 0.5-50mA 24VDC | 0.5μ-50mA 24VDC | 0.5-50mA 24VDC | 0.5μ-50mA 24VDC |
| Contact bounce | <2mS - typically 0.5mS | | | |
| Mechanical Specifications | | | | |
| Standard actuation force (switch) | 3.0N typ. | | | |
| Max. actuation force without cap | 100N for 10 sec. | | | |
| Key travel (switch) | 1 mm | | | |
| Life time (switch) | >10.000.000 cycles | | | |
| Temperature Range | | | | |
| Working temperature | Min. -40°C Max. +115°C | | Min. -40°C Max. +160°C | |
| Storage temperature | Min. -40°C Max. +115°C | | Min. -40°C Max. +160°C | |
| Soldering IEC 68-2-20 | Wave -max. 260°C for max. 10 sec., please refer to usage guidelines | | Infrared, vapour phase, wave - max. 260°C for max. 30 sec. | |
| | Soldering iron - max. 350°C for max. 3 sec. Flux tight. | | Soldering iron - max. 350°C for max. 3 sec. Flux tight. | |
| Environmental Endurance IEC-68-2-3 | | | | |
| Temperature | +40°C | | | |
| Humidity | 93% RH | | | |
| Duration | 56 Days | | | |
| Temperature Cycling IEC 68-2-14 | | | | |
| Temperature limit | Min. -55°C - Max. +85°C | | | |
| Number of cycles | 200 | | | |
| Exposure time at each temperature | 10 min. | | | |
| Recovery time before measurements | 16 hrs. | | | |
| Sealing IEC 529 | IP-67 | | | |
| Cleaning | Standard methods such as freon and water | | | |
| Material Specifications - Switches | | | | |
| Housing | PBT UL94VO | | PPS UL94VO | |
| Actuator | PBT UL94VO | | PPS UL94VO | |
| Sealing + spring | Silicone rubber | | | |
| Contact spring | Stainless steel + 3μAg | Stainless steel + 3μAg + 1μAu | Stainless steel + 3μAg | Stainless steel + 3μAg + 1μAu |
| Fixed Contacts | SnCu + 2μNi + 3μAg | SnCu + 2μNi + 3μAg + 1μAu | SnCu + 2μNi + 3μAg | SnCu + 2μNi + 3μAg + 1μAu |
| Terminals | SnCu + 2μNi + 3μSnPb | SnCu + 2μNi + 3μSnPb | SnCu + 2μNi + 3μSnPb | SnCu + 2μNi + 3μSnPb |
| Material Specifications - Caps & Bezels | | | | |
| Material | Parts | Temp limit | UL rating | |
| ABS Standard | Standard parts except the below mentioned | Max 65°C | UL94HB | |
| Polycarbonate | All lenses | Max. 85°C | UL94V1 | |
| LCP | Actuator of 3E | Max. 160°C | UL94VO | |
| PPS | 1S, 2S | Max. 160°C | UL94VO | |
| Polyamide | Actuator of Varimec , 1GA/ 1GC | Max. 160°C | UL94VO | |
| Legends Adhesion | ISO Class.: 1/ ASTM Class.: 4B DIN EN ISO 2409 | | | |

Specifications are subject to change without notice

**Existing and New Part Nos. for Lead Free, RoHS compatible and Proces compatible mec products
MULTIMEC**

| Part No. | Part Name | Lead Free | RoHS Comp. | Proces Comp. | New Part No. Comments | Lead Free |
|-----------------|-----------------------------------|------------------|-------------------|---------------------|------------------------------|------------------|
| 3ASH9 | Switch Surface Ag/High Temp | N | N | Y | RA3ASH9 | Y |
| 3AXXXG | All 3A Switches with Au | N | N | Y | RA3AXXXG | Y |
| 3AXXXQ | All 3A Quiet Switches | N | N | Y | RA3AXXXQ | Y |
| 3ASH9R | All 3A Switches delivered on Tape | N | N | Y | RA3ASH9R | Y |
| 3ATH9 | Switch Th Ag/High Temp. | N | N | Y | RA3ATH9 | Y |
| 3ATL6 | Switch Th Ag/White But/Low Temp. | N | N | Y | RA3ATL6 | Y |
| 3ATL6 w/LED | Switch Th Ag/Low Temp w/LED | N | N | Y | RA3ATL6 w/LED | Y |
| 3CSH9 | Switch Surface Ag/High Temp. | N | N | Y | RA3CSH9 | Y |
| 3CXXXG | All 3C Switches with Au | N | N | Y | RA3CXXXG | Y |
| 3CXXXQ | All 3C Quiet Switches | N | N | Y | RA3CXXXQ | Y |
| 3CSH9R | All 3C Switches delivered on Tape | N | N | Y | RA3CSH9R | Y |
| 3CTH9 | Switch Th Ag/High Temp | N | N | Y | RA3CTH9 | Y |
| 3CTL6 | Switch Th/White But/Low Temp | N | N | Y | RA3CTL6 | Y |
| 3CTL6-2SL | Switch Low Temp. 2 Straight Legs | N | N | Y | RA3CTL6-2SL | Y |
| 3CTL6RAS | Right Angle Switch Low Temp. | N | N | Y | RA3CTL6RAS | Y |
| 3CTL9 | Switch Th Ag/Black But/Low Temp | N | N | Y | RA3CTL9 | Y |
| 3ESH9 | Switch Surface Ag High Temp. | N | N | Y | RA3ESH9 | Y |
| 3ESH9-XX.X | Switch Ag/High Temp./w Actuator | N | N | Y | RA3ESH9-XX.X | Y |
| 3EXXXG | All 3E Switches with Au | N | N | Y | RA3EXXXG | Y |
| 3EXXXQ | All 3E Quiet Switches | N | N | Y | RA3EXXXQ | Y |
| 3ESH9R | All 3E Switches delivered on Tape | N | N | Y | RA3ESH9R | Y |
| 3ETH9 | Switch Th Ag High Temp. | N | N | Y | RA3ETH9 | Y |

| | | | | | | |
|-------------|------------------------------------|---|---|---|---------------------------|---|
| 3ETH9-XX.X | Switch Th Ag/High Temp. w/Actuator | N | N | Y | RA3ETH9-XX.X | Y |
| 3ETL9 | Switch Th Ag/Low Temp. | N | N | Y | RA3ETL9 | Y |
| 3ETL9-XX.X | Switch Th Ag/Low Temp. w/Actuator | N | N | Y | RA3ETL9-XX.X | Y |
| 3FSH9 | Switch Surface Ag/High Temp. | N | N | Y | RA3FSH9 | Y |
| 3FXXXG | All 3F Switches with Au | N | N | Y | RA3FXXXG | Y |
| 3FXXXQ | All 3F Quiet Switches | N | N | Y | RA3FXXXQ | Y |
| 3FSH9R | All 3F Switches delivered on Tape | N | N | Y | RA3FSH9R | Y |
| 3FTH9 | Switch Th Ag/High Temp. | N | N | Y | RA3FTH9 | Y |
| 3FTH9 w/LED | Switch Th High Temp w/ LED | N | N | Y | RA3FTH9 w/LED | Y |
| 3FTL6 | Switch Th Ag/Low Temp. | N | N | Y | RA3FTL6 | Y |
| 3FTL6 w/LED | Switch Th Ag/Low Temp w/LED | N | N | Y | RA3FTL6 w/LED | Y |
| 3FTL6-2SL | Switch Low Temp. 2 Straight Legs | N | N | Y | RA3FTL6-2SL | Y |
| 3FTL6RAS | Right Angle Switch Low Temp. | N | N | Y | RA3FTL6RAS | Y |
| 1CXXXX | Leds for 1C or 1H Button | N | N | N | RA1CXXXX | Y |
| 2BXXXX | Leds for 2B Bezel | N | N | N | RA2BXXXX | Y |
| 3FXXXXX | Leds Bent for 3F | N | N | N | RA3FXXXXX | Y |
| 1AXX | DI Buttons all colours for 3A | Y | Y | N | No change, pls see note 1 | |
| 1BXX | DI Buttons f. Bezels all colours | Y | Y | N | No change, pls see note 1 | |
| 1CXXX | DI Buttons w/Lens all colours | Y | Y | N | No change, pls see note 1 | |
| 1DXX | Lk Buttons all colours | Y | Y | N | No change, pls see note 1 | |
| 1EXXX | Lk Buttons w/Lens all colours | Y | Y | N | No change, pls see note 1 | |
| 1FXXX | Lk Buttons w/Lens all colours | Y | Y | N | No change, pls see note 1 | |
| 1GA09 | Cap black 11 | Y | Y | Y | No change | |
| 1GC09 | Cap black 15 | Y | Y | Y | No change | |
| 1HXXX | DI Buttons w/Lens all colours | Y | Y | N | No change, pls see note 1 | |
| 1KXX | Lk Lid all colours | Y | Y | N | No change, pls see note 1 | |
| 1KXX16 | Lid all colours/Lens/Reflector | Y | Y | N | No change, pls see note 1 | |

| | | | | | |
|------------|--------------------------------------|---|---|---|---------------------------|
| 1KXX1 | Lens Milky White For 1K Button | Y | Y | N | No change, pls see note 1 |
| 1KXXX6 | Reflector For 1K Button White | Y | Y | N | No change, pls see note 1 |
| 1MXX | DI Button Double Width all colours | Y | Y | N | No change, pls see note 1 |
| 1NXX | Teardrop Buttons all colours | Y | Y | N | No change, pls see note 1 |
| 1PXX | Gf Buttons all colours | Y | Y | N | No change, pls see note 1 |
| 1QXXX | 1P But. W/Square Hole, all colours | Y | Y | N | No change, pls see note 1 |
| 1RXXX | 1P Button w/Round Hole, all colours | Y | Y | N | No change, pls see note 1 |
| 1S09-XX.X | Lk Button Black, all heights | Y | Y | Y | No change |
| 1S11-XX.X | Lk Button Transparent, all heights | Y | Y | N | No change, pls see note 2 |
| 1TXX | Sq. Button, all colours | Y | Y | N | No change, pls see note 1 |
| 1UXX | Round Button, all colours | Y | Y | N | No change, pls see note 1 |
| 1VXX | Arrow Button, all colours | Y | Y | N | No change, pls see note 1 |
| 1X XX | Rectangular Button, all colours | Y | Y | N | No change, pls see note 1 |
| 1ZAXX | DL Button, all colours | Y | Y | N | No change, pls see note 1 |
| 1ZBXX | Curved Button, all colours | Y | Y | N | No change, pls see note 1 |
| 1ZCXX | Round Button, all colours | Y | Y | N | No change, pls see note 1 |
| 3E-XX.X | Actuator f. 3E Switch, all heights | Y | Y | Y | No change |
| 3E-AXXXX | Varimec cap 5.2 Round, all heights | Y | Y | Y | No change |
| 3E-BXXXX | Varimec cap 5.2 Square, all heights | Y | Y | Y | No change |
| 3E-EXXXX | Varimec cap 7.8 Round, all heights | Y | Y | Y | No change |
| 3E-FXXXX | Varimec cap 7.8 Square, all heights | Y | Y | Y | No change |
| 3E-KXXXX | Varimec cap 11.6 Round, all heights | Y | Y | Y | No change |
| 3E-LXXXX | Varimec cap 11.6 Square, all heights | Y | Y | Y | No change |
| AQB01XX | Sealing Boot (incl. Sea.ring) | Y | Y | Y | No change |
| AQB0111 | Sealing Boot Trans. (incl. Sea.ring) | Y | Y | Y | No change |
| AQC09-XX.X | Cap Black, all overall heights | Y | Y | Y | No change |
| AQC11-XX.X | Cap Trans. all overall heights | Y | Y | N | No change, pls see note 2 |

| | | | | | |
|------------|---------------------------------------|---|---|---|---------------------------|
| AQN-X.X | Bushing, all heights | Y | Y | Y | No change |
| 1CXXX | Lens f. 1C/1H/1Q Buttons, all colours | Y | Y | N | No change, pls see note 2 |
| 1EXXX | Lens f. 1E Buttons, all colours | Y | Y | N | No change, pls see note 2 |
| 1FXXX | Lens f. 1F Buttons, all colours | Y | Y | N | No change, pls see note 2 |
| 1RXX1 | Round Transparent Lens For 1R | Y | Y | N | No change, pls see note 2 |
| 2AXX | DI Bezel, all colours | Y | Y | N | No change, pls see note 1 |
| 2BXXX | Bezel/Lens, all colours | Y | Y | N | No change, pls see note 1 |
| 2BXXX | Lens f. 2B Bezel, all colours | Y | Y | N | No change, pls see note 2 |
| 2KXX | Lk Bezel f. 1K, all colours | Y | Y | N | No change, pls see note 1 |
| 2RAS | Right Angle Support. | Y | Y | Y | No change |
| 2S09-XX.X | Extender, Black Pps, all heights | Y | Y | Y | No change |
| 1A09XDXXX | Button 1A Down/all legends | Y | Y | N | No change, pls see note 1 |
| 1A09UXXXX | Button 1A Up/all legends | Y | Y | N | No change, pls see note 1 |
| 1B09XDXXX | Button 1b Down/0 | Y | Y | N | No change, pls see note 1 |
| 1B09UXXXX | Button 1B Up/all legends | Y | Y | N | No change, pls see note 1 |
| 1D09XXX | Round Button/all legends | Y | Y | N | No change, pls see note 1 |
| 1F096XXX | 1F Button/Inverse legends | Y | Y | N | No change, pls see note 1 |
| 1ZB09XDXXX | Button1ZB09 Down / all legends | Y | Y | N | No change, pls see note 1 |
| 1ZC09XXX | Button 1ZC09 / all legends | Y | Y | N | No change, pls see note 1 |

Note 1: Complies with RoHS, however plastic material limited to 65°C.
Accessories must be mounted after soldering.

Note 2: Complies with RoHS, however plastic material is limited to 85°C,
so excessive proces heat must be avoided.

041213

041213

X-ON Electronics

Largest Supplier of Electrical and Electronic Components

Click to view similar products for [Tactile Switches](#) category:

Click to view products by [Multimec](#) manufacturer:

Other Similar products are found below :

[KMR633NG LFG](#) [5GTH9202242](#) [6426-201-11343](#) [MJ1226](#) [MJTP1109B](#) [MJTP1138EAUTR](#) [MJTP1230BL](#) [MJTPSHW](#) [GS6.90F300QP](#) [1-1977223-0](#) [1-1977120-4](#) [ADTSA62NV](#) [ADTSA62RV](#) [ADTSA63KV](#) [ADTSA644NV](#) [ADTSM24NVTR](#) [ADTSMW66NV](#) [ADTSMW67RV](#) [ATM533VTR](#) [1571300-3](#) [B3F-3123](#) [B3F-6055A](#) [B3F-B32-01-KIT](#) [1977177-8](#) [1977266-1](#) [2-1977223-4](#) [2-1977223-7](#) [ADTS644KV](#) [ADTSA61RV](#) [ADTSA62KV](#) [ADTSA63NV](#) [ADTSA63RV](#) [ADTSA65NV](#) [ADTSM21NSVTR](#) [ADTSM25RVTR](#) [ADTSM31RVTR](#) [ADTSM32NVTR](#) [ADTSM61YVTR](#) [ADTSM63SVTR](#) [ADTSM644KVTR](#) [ADTSMW64RV](#) [ADTSMW69NV](#) [FSMRA4JHA04](#) [GS4.70F300QP](#) [D38999/20JJ37SA](#) [TL1105B](#) [TL1105J](#) [ATH447K2Q](#) [ATM534VTR](#) [MJ1215](#)