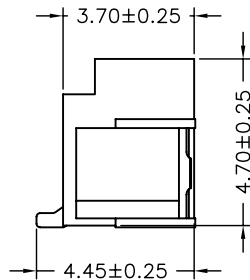


P.C.B LAYOUT



SPECIFICATIONS

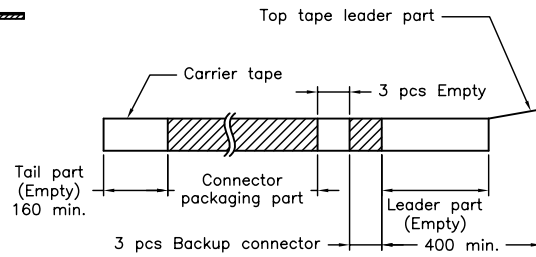
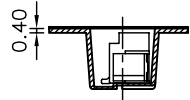
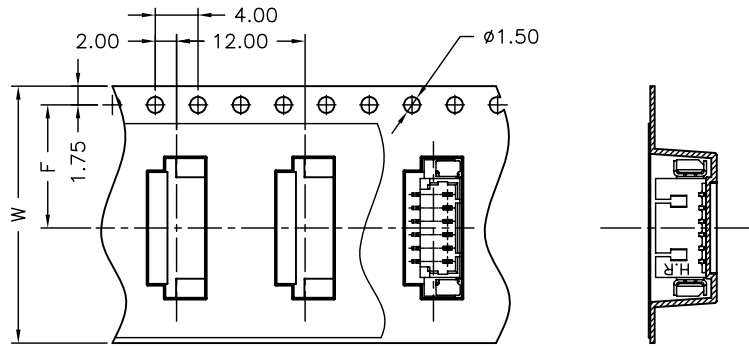
Current Rating: 1A AC,DC
 Voltage Rating: 125V AC,DC
 Temperature Range: -25°C ~ +85°C
 Contact Resistance: 20mΩ Max.
 Insulation Resistance: 100MΩ Min.
 Withstanding Voltage: 500V AC/minute
 Pin Material: Phosphor Bronze/Tin-plated
 Solder Tabs: Phosphor Bronze/Tin-plated
 Material: Nylon 6T,UL94V-0
 Color: Natural(Beige)

Ordering Information & Dimensions

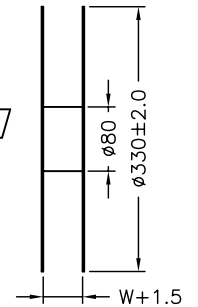
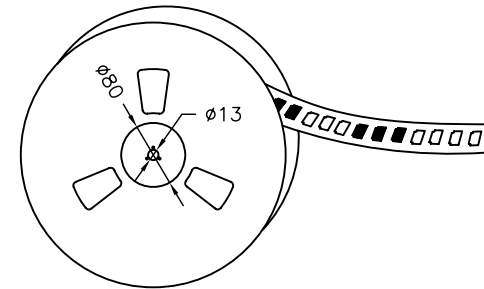
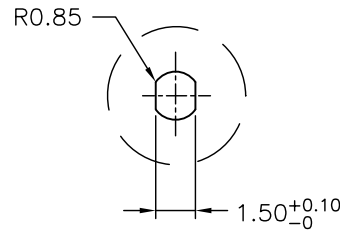
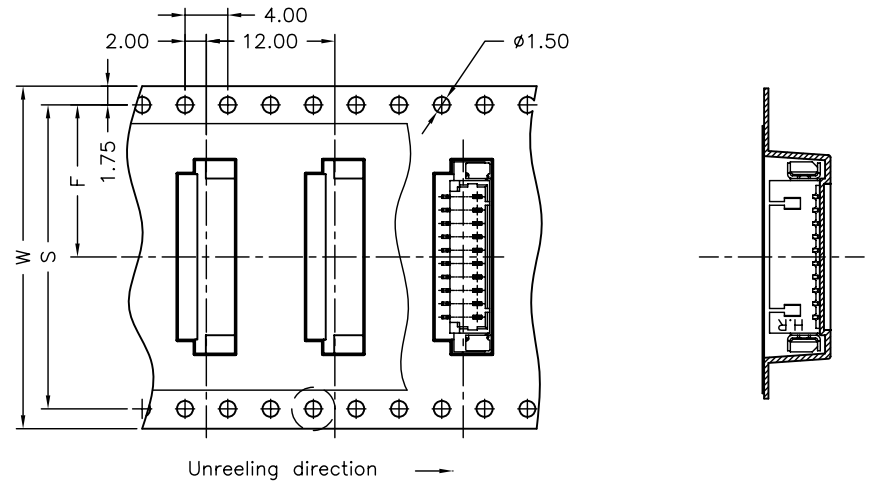
| PART NO. | Dimensions | |
|---------------|------------|-------|
| | A | B |
| A1250WV-S-02P | 1.25 | 7.75 |
| A1250WV-S-03P | 2.50 | 9.00 |
| A1250WV-S-04P | 3.75 | 10.25 |
| A1250WV-S-05P | 5.00 | 11.50 |
| A1250WV-S-06P | 6.25 | 12.75 |
| A1250WV-S-07P | 7.50 | 14.00 |
| A1250WV-S-08P | 8.75 | 15.25 |
| A1250WV-S-09P | 10.00 | 16.50 |
| A1250WV-S-10P | 11.25 | 17.75 |
| A1250WV-S-11P | 12.50 | 19.00 |
| A1250WV-S-12P | 13.75 | 20.25 |
| A1250WV-S-13P | 15.00 | 21.50 |
| A1250WV-S-14P | 16.25 | 22.75 |
| A1250WV-S-15P | 17.50 | 24.00 |
| A1250WV-S-16P | 18.75 | 25.25 |
| A1250WV-S-17P | 20.00 | 26.50 |
| A1250WV-S-18P | 21.25 | 27.75 |

| | | | | |
|---|-------------|------------|-------------|----------------------------|
| | | | | |
| UNIT | SCALE | SHEET | TITLE: | |
| mm | | 1 of 2 | | |
| DRAWN BY | APPROVED BY | | | |
| 董正一 | 董正一 | | | |
| 2001.02.01 | 2001.02.01 | | | |
| GENERAL TOLERANCE | | | | |
| | | X. X±0.25 | ANGLE± | |
| B0 | NEW RELEASE | 2006.06.23 | X. XX±0.15 | |
| REV. | DESCRIPTION | DATE | X. XXX±0.05 | |
| | | | | |
| 1.25mm PITCH 180° WAFER-SMT TYPE | | | | DRAW NO. : A1250WV-S-XP |
| | | | | REV. B0 |

02~08 Contacts



09~18 Contacts



| Number of Contacts | W±0.3 | F±0.1 | S±0.1 | Q'ty/Reel |
|--------------------|-------|-------|-------|-----------|
| 02P | 16 | 7.50 | | 1,000 |
| 03P | 16 | 7.50 | | 1,000 |
| 04P | 24 | 11.50 | | 1,000 |
| 05P | 24 | 11.50 | | 1,000 |
| 06P | 24 | 11.50 | | 1,000 |
| 07P | 24 | 11.50 | | 1,000 |
| 08P | 24 | 11.50 | | 1,000 |
| 09P | 24 | 11.50 | | 1,000 |
| 10P | 32 | 14.20 | 28.40 | 1,000 |
| 11P | 32 | 14.20 | 28.40 | 1,000 |
| 12P | 32 | 14.20 | 28.40 | 1,000 |
| 13P | 32 | 14.20 | 28.40 | 1,000 |
| 14P | 44 | 20.20 | 40.40 | 1,000 |
| 15P | 44 | 20.20 | 40.40 | 1,000 |
| 16P | 44 | 20.20 | 40.40 | 1,000 |
| 17P | 44 | 20.20 | 40.40 | 1,000 |
| 18P | 44 | 20.20 | 40.40 | 1,000 |

| | | | | | | |
|------|-------------|------------|-------------------|--------|-------------|---|
| | | | | | | |
| | | | UNIT | SCALE | SHEET | TITLE: |
| | | | mm | | 2 of 2 | |
| | | | DRAWN BY | | APPROVED BY | |
| | | | 蕭惠風 | | 謝瑞清 | |
| | | | 2004.02.12 | | 2004.02.12 | |
| | | | GENERAL TOLERANCE | | | |
| | | | X. X±0.25 | ANGLE± | | 1.25mm PITCH 180° WAFER-SMT TYPE TAPING SPEC. |
| | | | X. XX±0.15 | | | |
| | | | X. XXX±0.05 | | | |
| B0 | NEW RELEASE | 2006.06.23 | | | | |
| REV. | DESCRIPTION | DATE | | | | |
| | | | DRAW NO. : | | | REV. |
| | | | A1250WV-S-XP | | | B0 |

X-ON Electronics

Largest Supplier of Electrical and Electronic Components

Click to view similar products for [I/O Connectors](#) category:

Click to view products by [Joint manufacturer](#):

Other Similar products are found below :

[571763P](#) [58098-0628](#) [D38999/20FJ24PA L/C](#) [D38999/20FJ29SB L/C](#) [D38999/24FG11SN L/C](#) [72.250.1628.2](#) [72.250.2428.2](#) [74720-0505](#)
[747680210](#) [76.350.0729.0](#) [76871-1403](#) [FCN-244F080-G/1](#) [FCN-260A9920](#) [FCN-268D024-G/11](#) [FCN-268D024-G/2F#10X-R10](#) [MP-](#)
[5T180MUNNA-005](#) [MP-5XRJ45UNNB-003](#) [PCR-E36PM](#) [PCS-E50FA](#) [PCS-XE26LKA](#) [PCS-XE26MA+](#) [PCS-XES68MS+](#) [G38A71314B](#) [91-](#)
[569719-35R](#) [DX40-50P\(55\)](#) [1571250010](#) [157-22500-3](#) [MS3471L14-19P L/C](#) [MS3476W12-10S L/C](#) [171224-6031](#) [1888020-8](#) [91-569719-35P](#) [91-](#)
[569786-35H](#) [91-569786-35M](#) [91-644626-35P](#) [172501-4002](#) [172501-6002](#) [FCN-260C008-A/L0](#) [FCN-260C024-AL0](#) [FCN-261Z008](#) [FCN-264D024-](#)
[G2K](#) [FCN-268D008-G/1K](#) [2000314-1](#) [200331-1](#) [2007498-2](#) [PCR-E28LMDAG1+](#) [PCR-E36FC+](#) [PCS-E28FS+](#) [PCS-XE26SLFD+](#) [PCS-](#)
[XE26SLFDT+](#)