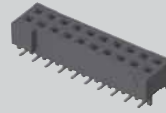
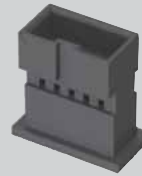




ITD2-05-D



S2M-110-02-L-D

T1M82-L-2426-01-L

(2,00 mm) .0787"

ITD2, T1M82, S2M SERIES

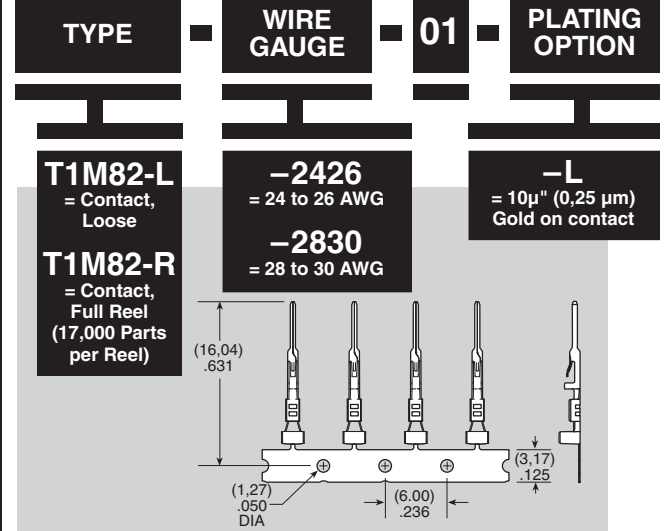
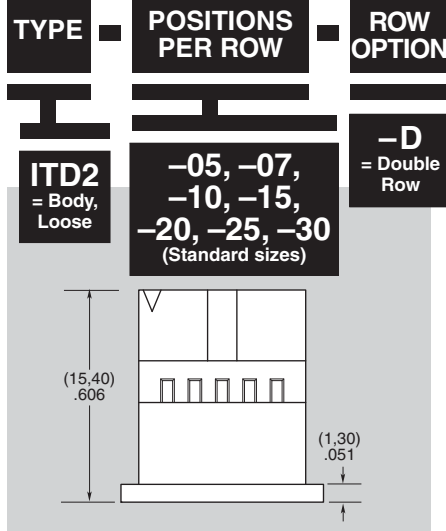
# DISCRETE WIRE COMPONENTS & TOOLING

## SPECIFICATIONS

For complete specifications see [www.samtec.com?TD2](http://www.samtec.com?TD2) or [www.samtec.com?T1M82](http://www.samtec.com?T1M82)

## TOOLING

- Hand Tool:  
CAT-HT-182-2430-11
- Mini Applicator (24-26 AWG):  
CAT-MA-182-2426-XX-01
- Mini Applicator (28-30 AWG):  
CAT-MA-182-2830-XX-01



Mates with:  
T2SD

## SPECIFICATIONS

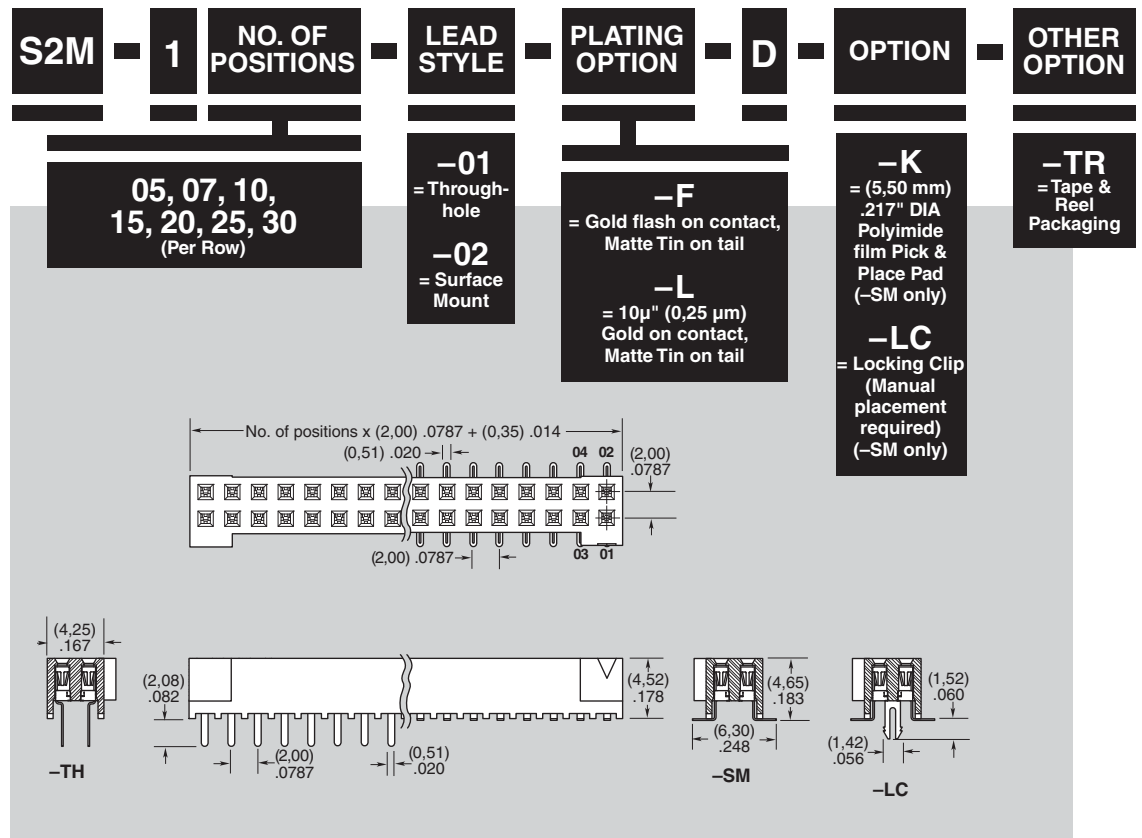
For complete specifications and recommended PCB layouts see [www.samtec.com?S2M](http://www.samtec.com?S2M)

**Insulator Material:** Black Liquid Crystal Polymer  
**Contact Material:** BeCu  
**Plating:** Sn or Au over 50µ" (1,27 µm) Ni  
**Operating Temp Range:** -55°C to +125°C  
**Contact Resistance:** 10 mΩ max  
**Insertion Depth:** (3,05 mm) .120" to (3,25 mm) .128"  
**Insertion Force:** (Single contact only) 2.0 oz (0,56 N) average  
**Withdrawal Force:** (Single contact only) 1.5 oz (0,42 N) average  
**Max Cycles:** 100 with 10µ" (0,25 µm) Au  
**RoHS Compliant:** Yes

**Processing:**  
**Lead-Free Solderable:** Yes  
**SMT Lead Coplanarity:** (0,10 mm) .004" max

## RECOGNITIONS

For complete scope of recognitions see [www.samtec.com/quality](http://www.samtec.com/quality)



Due to technical progress, all designs, specifications and components are subject to change without notice.

[WWW.SAMTEC.COM](http://WWW.SAMTEC.COM)

## X-ON Electronics

Largest Supplier of Electrical and Electronic Components

*Click to view similar products for [FFC & FPC Connectors](#) category:*

*Click to view products by [Samtec](#) manufacturer:*

Other Similar products are found below :

[HFW11R-1STE1H1LF](#) [FH29B-100S-0.2SHW\(99\)](#) [FA5S008HP1](#) [FH29B-120S-0.2SHW\(99\)](#) [FH29B-80S-0.2SHW\(99\)](#) [FHS-16](#) [FPH-2022G](#)  
[52610-1075](#) [52610-1275](#) [52610-1934](#) [XF3M\(1\)-1415-1B-R100](#) [501864-3091-TR225](#) [0525594033](#) [086210010340800](#) [086222026001800](#)  
[52271-2869-CUT-TAPE](#) [62674-201121DLF](#) [62684-36210E9ALF](#) [52610-1675](#) [52746-1671-TR250](#) [10051922-2810EHLF](#) [6-520415-9](#)  
[BD021-09A-A1-0350-0200-0550-LD](#) [SFV6R-1STE9HLF](#) [XF3M-2915-1B-R100](#) [1658549-1](#) [62674-221121ALF](#) [46214008010800](#)  
[046298003000883](#) [151660622](#) [842-816-2630-035](#) [AYF530665TA](#) [AYF351525](#) [046296011930846+](#) [AYF352325A](#) [046254020000800+](#)  
[FH19C-13S-0.5SH\(99\)](#) [FH39J-51S-0.3SHW\(99\)](#) [AYF355125A](#) [AYF530365TA](#) [FH29B-44S-0.2SHW\(99\)](#) [SFW5R-2STAE9LF](#) [AYF351125A](#)  
[AYF350725A](#) [62684-502100AHLF](#) [FH39-61S-0.3SHW\(99\)](#) [AYF414035A](#) [10064555-172520HLF](#) [AYF212335A](#) [504754-2500](#)