

**Features**

- Our best size/ performance series with broad applications in industrial controls.
- Widest safety agency approvals
- High peak pulse withstand capability

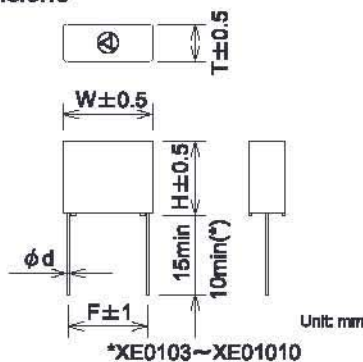
**Applications**

- Suppressing noise occurring world wide Automatic machines and Office appliances.

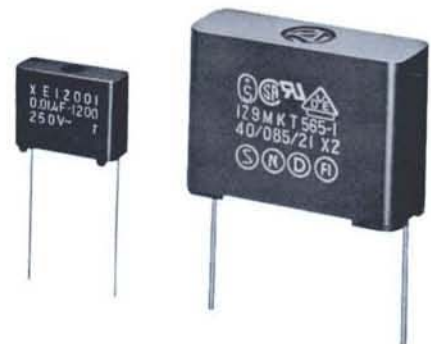
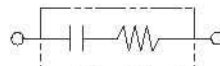


Safety Agency : Standard	File No.
UL : UL-1414	E47474
CSA : CSA C22.2 No.0, No.1	LR37404, LR68886
VDE : IEC60384-14 II , EN132400	126833, 126432
SEV : "	Nr.99.5 50354,01
SEMKO : "	9805093/01, 9821094/01
NEMKO : "	P98101548, P98101872
FIMKO : "	FI 11185
DEMKO : "	307778, 307865

**Dimensions**



**Circuit**



**Electrical Specifications**

Rated Voltage **250VAC**

Safety Agency	Class	Model Number	Capacitance µF ±20%	Resistance Ω ±30%	Dimensions					Pulse condition (Max.)				Peak Pulse Voltage	Test Voltage	Insulation Resistance
					W	H	T	F	d	Peak to peak	Pulse width Max.	Repetitive frequency	Pulse width (sec) x Frequency (Hz) max.			
	X2	XE01001	0.01	10(1/4W)	17.0	14.0	7.0	15.0	0.6 ±0.05	800V max.	50msec max.	120Hz max.	4.5	1200V max.	Line to Line 1250Vrms 50/60Hz 80sec	Line to Line 15,000MΩ min. (500VDC) except XE0105 0475, 01010 5000MΩ min. (500VDC)
		XE04701		47(1/4W)									3.0			
		XE12001		120(1/4W)									1.5			
		XE22001		220(1/4W)									0.8			
		XE47001		470(1/4W)									0.45			
		XE010033	0.033	10(1/4W)	17.5	15.0	8.0	15.0	0.6 ±0.05				3.0			
		XE047033		47(1/4W)									2.0			
		XE120033		120(1/4W)									1.0			
		XE220033		220(1/4W)									0.5			
		XE470033		470(1/4W)									0.25			
		XE0101	0.1	10(1/2W)	23.5	17.5	8.5	20.0	0.8 ±0.07				1.5			
		XE0471		47(1/2W)									1.0			
		XE1201		120(1/2W)									0.45			
		XE2201		220(1/2W)									0.2			
		XE4701		470(1/2W)									0.1			
		XE0102	0.2	10(1/2W)	30.0	20.0	11.0	27.5	0.8 ±0.07				0.5			
		XE0472		47(1/2W)									0.3			
		XE1202		120(1/2W)									0.15			
		XE2202		220(1/2W)									0.08			
		XE0103		0.3									10( 1W )		40.0	28.0
XE0473	47( 1W )	0.1														
XE1203	120( 1W )	0.05														
XE2203	220( 1W )	0.02														
XE0105	0.5	10( 1W )						0.18								
XE0475	0.5	47( 1W )					0.05									
XE01010	1.0	10( 1W )	47.0	33.5	22.0	43.5						0.15		Line to Case 2000Vrms 50/60Hz 80sec	Line to Case 100,000MΩ min. (500VDC)	

Operating Temperature: -40~+100°C



## **X-ON Electronics**

Largest Supplier of Electrical and Electronic Components

*Click to view similar products for [roxburgh](#) manufacturer:*

Other Similar products are found below :

[RES20F06](#) [RES90F10](#) [RIS0622H2](#) [KMF3100](#) [XE12001](#) [SF1121](#) [RES5-FO8](#) [DRF10](#) [CMV10](#) [DVS24](#) [C225](#) [RES20F16](#) [DRF06](#) [RES20F10](#)  
[XEB01010](#) [RES5-F15](#) [DRF08](#) [C215](#) [RES10F06](#) [RES30F03](#) [XE0475](#) [SF1123](#) [RID-0342-H](#) [RES5-F10](#) [RIR-0622-H](#) [XE01010](#) [SMV20](#)  
[RIR-0222-H](#) [SF1122](#) [SMV40](#) [RIQ-0442-H2](#) [RX730RC+CLIP](#) [SMV10](#) [3CRH30330](#) [CMV20](#) [XE1201](#) [RE1201](#)