

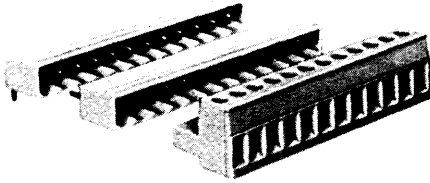
# Pluggable terminal strips for printed circuits



Color: black - 5mm / light grey - 5.08mm  
 rated cross section 2.5 mm<sup>2</sup>

solid/fine stranded  
 rated voltage 250V~, 300V ==  
 (VDE 0110 Gr. C)

UL ratings: AWG No 22-12 300V 15 A  
 CSA ratings: AWG No 22-12 300 V 15 A



### MATERIALS:

Insulating housing: polyamide, flame resistant  
 UL 94 V-0 continuous temp. 100°C

Clamping body and clamping screws: copper alloy, nickel plated

Solder pins and contact springs: tin plated bronze

All metal parts are either recessed or enclosed in the insulating body, providing circuit protection and dead-front safety. The terminal block connectors are provided with captive wire protection, and the terminal screws are captive and secured against loosening.

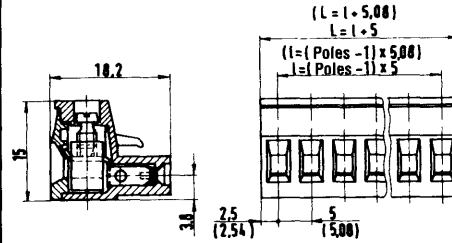
spacing 5 mm: standard color: black.

spacing 5.08 mm: standard color: light grey

## Type 8113 B/.. Type 8213 B/..

spacing 5mm / 5.08 mm

### Plug connector



screw connection  
 wire strip length 6 mm

| 8113 B/.. poles | part no       | part no       | spacing 5 mm |
|-----------------|---------------|---------------|--------------|
|                 | marked        | unmarked      |              |
| 2               | 25.320.0253.1 | 25.320.3253.1 | 5            |
| 3               | 25.320.0353.1 | 25.320.3353.1 | 10           |
| 4               | 25.320.0453.1 | 25.320.3453.1 | 15           |
| 5               | 25.320.0553.1 | 25.320.3553.1 | 20           |
| 6               | 25.320.0653.1 | 25.320.3653.1 | 25           |
| 7               | 25.320.0753.1 | 25.320.3753.1 | 30           |
| 8               | 25.320.0853.1 | 25.320.3853.1 | 35           |
| 9               | 25.320.0953.1 | 25.320.3953.1 | 40           |
| 10              | 25.320.1053.1 | 25.320.4053.1 | 45           |
| 11              | 25.320.1153.1 | 25.320.4153.1 | 50           |
| 12              | 25.320.1253.1 | 25.320.4253.1 | 55           |
| 13              | 25.320.1353.1 | 25.320.4353.1 | 60           |
| 14              | 25.320.1453.1 | 25.320.4453.1 | 65           |
| 15              | 25.320.1553.1 | 25.320.4553.1 | 70           |
| 16              | 25.320.1653.1 | 25.320.4653.1 | 75           |
| 17              | 25.320.1753.1 | 25.320.4753.1 | 80           |
| 18              | 25.320.1853.1 | 25.320.4853.1 | 85           |
| 19              | 25.320.1953.1 | 25.320.4953.1 | 90           |
| 20              | 25.320.2053.1 | 25.320.5053.1 | 95           |
| 21              | 25.320.2153.1 | 25.320.5153.1 | 100          |
| 22              | 25.320.2253.1 | 25.320.5253.1 | 105          |
| 23              | 25.320.2353.1 | 25.320.5353.1 | 110          |
| 24              | 25.320.2453.1 | 25.320.5453.1 | 115          |

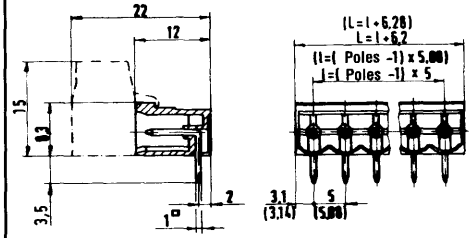
| 8213 B/.. poles | part no       | part no       | spacing 5.08 mm |
|-----------------|---------------|---------------|-----------------|
|                 | marked        | unmarked      |                 |
| 2               | 25.340.0253.0 | 25.340.3253.0 | 5.08            |
| 3               | 25.340.0353.0 | 25.340.3353.0 | 10.16           |
| 4               | 25.340.0453.0 | 25.340.3453.0 | 15.24           |
| 5               | 25.340.0553.0 | 25.340.3553.0 | 20.32           |
| 6               | 25.340.0653.0 | 25.340.3653.0 | 25.40           |
| 7               | 25.340.0753.0 | 25.340.3753.0 | 30.48           |
| 8               | 25.340.0853.0 | 25.340.3853.0 | 35.56           |
| 9               | 25.340.0953.0 | 25.340.3953.0 | 40.64           |
| 10              | 25.340.1053.0 | 25.340.4053.0 | 45.72           |
| 11              | 25.340.1153.0 | 25.340.4153.0 | 50.80           |
| 12              | 25.340.1253.0 | 25.340.4253.0 | 55.88           |
| 13              | 25.340.1353.0 | 25.340.4353.0 | 60.96           |
| 14              | 25.340.1453.0 | 25.340.4453.0 | 66.04           |
| 15              | 25.340.1553.0 | 25.340.4553.0 | 71.12           |
| 16              | 25.340.1653.0 | 25.340.4653.0 | 76.20           |
| 17              | 25.340.1753.0 | 25.340.4753.0 | 81.28           |
| 18              | 25.340.1853.0 | 25.340.4853.0 | 86.36           |
| 19              | 25.340.1953.0 | 25.340.4953.0 | 91.44           |
| 20              | 25.340.2053.0 | 25.340.5053.0 | 96.52           |
| 21              | 25.340.2153.0 | 25.340.5153.0 | 101.60          |
| 22              | 25.340.2253.0 | 25.340.5253.0 | 106.68          |
| 23              | 25.340.2353.0 | 25.340.5353.0 | 111.76          |
| 24              | 25.340.2453.0 | 25.340.5453.0 | 116.84          |

## Type 8113 S/..W Type 8213 S/..W

spacing 5mm / 5.08mm

### Horizontal socket

Plug-in parallel to PC board



cross section 1 x 1  
 diameter of drilling hole 1.4 mm

| 8113 S/..W poles | part no       | spacing 5 mm |
|------------------|---------------|--------------|
|                  | unmarked      |              |
| 2                | 25.332.3253.1 | 5            |
| 3                | 25.332.3353.1 | 10           |
| 4                | 25.332.3453.1 | 15           |
| 5                | 25.332.3553.1 | 20           |
| 6                | 25.332.3653.1 | 25           |
| 7                | 25.332.3753.1 | 30           |
| 8                | 25.332.3853.1 | 35           |
| 9                | 25.332.3953.1 | 40           |
| 10               | 25.332.4053.1 | 45           |
| 11               | 25.332.4153.1 | 50           |
| 12               | 25.332.4253.1 | 55           |
| 13               | 25.332.4353.1 | 60           |
| 14               | 25.332.4453.1 | 65           |
| 15               | 25.332.4553.1 | 70           |
| 16               | 25.332.4653.1 | 75           |
| 17               | 25.332.4753.1 | 80           |
| 18               | 25.332.4853.1 | 85           |
| 19               | 25.332.4953.1 | 90           |
| 20               | 25.332.5053.1 | 95           |
| 21               | 25.332.5153.1 | 100          |
| 22               | 25.332.5253.1 | 105          |
| 23               | 25.332.5353.1 | 110          |
| 24               | 25.332.5453.1 | 115          |

| 8213 S/..W poles | part no       | spacing 5.08 mm |
|------------------|---------------|-----------------|
|                  | unmarked      |                 |
| 2                | 25.352.3253.0 | 5.08            |
| 3                | 25.352.3353.0 | 10.16           |
| 4                | 25.352.3453.0 | 15.24           |
| 5                | 25.352.3553.0 | 20.32           |
| 6                | 25.352.3653.0 | 25.40           |
| 7                | 25.352.3753.0 | 30.48           |
| 8                | 25.352.3853.0 | 35.56           |
| 9                | 25.352.3953.0 | 40.64           |
| 10               | 25.352.4053.0 | 45.72           |
| 11               | 25.352.4153.0 | 50.80           |
| 12               | 25.352.4253.0 | 55.88           |
| 13               | 25.352.4353.0 | 60.96           |
| 14               | 25.352.4453.0 | 66.04           |
| 15               | 25.352.4553.0 | 71.12           |
| 16               | 25.352.4653.0 | 76.20           |
| 17               | 25.352.4753.0 | 81.28           |
| 18               | 25.352.4853.0 | 86.36           |
| 19               | 25.352.4953.0 | 91.44           |
| 20               | 25.352.5053.0 | 96.52           |
| 21               | 25.352.5153.0 | 101.60          |
| 22               | 25.352.5253.0 | 106.68          |
| 23               | 25.352.5353.0 | 111.76          |
| 24               | 25.352.5453.0 | 116.84          |

Z5.523.2453.0

See page 145 for the use of fixing brackets, end plates, and coding pieces.

### Accessories

fixing brackets  
 complete end section



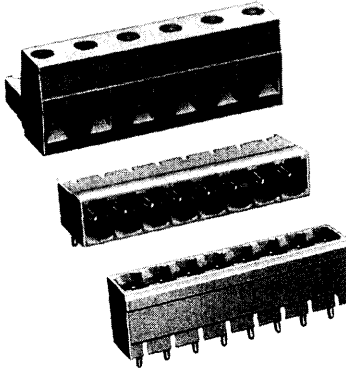
# Pluggable terminal strips for printed circuits

148



Color: light grey  
 rated cross section 2.5 mm<sup>2</sup>  
 solid/fine stranded  
 rated voltage 380 V~, 450V =  
 (VDE 0110 Gr. C)

UR ratings: AWG No 22-12 300V 15 A  
 CSA ratings: AWG No 22-12 300 V 15 A



## MATERIALS:

Insulating housing: polyamide, flame resistant  
 UL 94 V-0 continuous temperature 100°C

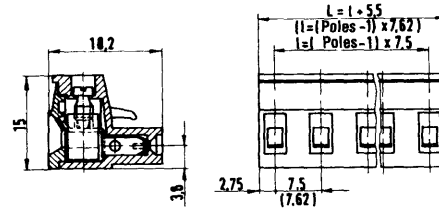
Clamping body and clamping screws: copper alloy nickel plated  
 Solder pins and contact springs: tin plated bronze

All metal parts are either recessed or enclosed in the insulating body, providing circuit protection and dead-front safety. The terminal block connectors are provided with captive wire protection, and the terminal screws are captive and secured against loosening.

## Type 8313 B/.. Type 8413 B/..

spacing 7.5/7.62 mm

### Plug connector



screw connection  
 insul. strip length 6 mm

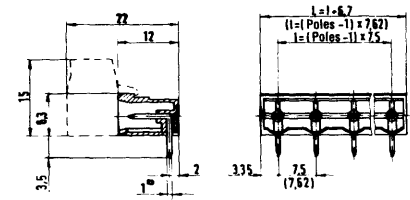
| 8313 B/.. |               | spacing 7.5 mm |      |
|-----------|---------------|----------------|------|
| poles     | part no.      | part no.       |      |
|           | marked        | unmarked       |      |
| 2         | 25.360.0253.0 | 25.360.3253.0  | 7.5  |
| 3         | 25.360.0353.0 | 25.360.3353.0  | 15.0 |
| 4         | 25.360.0453.0 | 25.360.3453.0  | 22.5 |
| 5         | 25.360.0553.0 | 25.360.3553.0  | 30.0 |
| 6         | 25.360.0653.0 | 25.360.3653.0  | 37.5 |
| 7         | 25.360.0753.0 | 25.360.3753.0  | 45.0 |
| 8         | 25.360.0853.0 | 25.360.3853.0  | 52.5 |
| 9         | 25.360.0953.0 | 25.360.3953.0  | 60.0 |
| 10        | 25.360.1053.0 | 25.360.4053.0  | 67.5 |
| 11        | 25.360.1153.0 | 25.360.4153.0  | 75.0 |
| 12        | 25.360.1253.0 | 25.360.4253.0  | 82.5 |

## Type 8313 S/..W Type 8413 S/..W

spacing 7.5/7.62 mm

### Horizontal socket

Plug-in parallel to PC board



cross section 1 x 1  
 diameter of drilling hole 1.4 mm

| 8313 S/..W |               | spacing 7.5 mm |      |
|------------|---------------|----------------|------|
| poles      | part no.      | part no.       |      |
|            | unmarked      |                |      |
| 2          | 25.372.3253.0 |                | 7.5  |
| 3          | 25.372.3353.0 |                | 15.0 |
| 4          | 25.372.3453.0 |                | 22.5 |
| 5          | 25.372.3553.0 |                | 30.0 |
| 6          | 25.372.3653.0 |                | 37.5 |
| 7          | 25.372.3753.0 |                | 45.0 |
| 8          | 25.372.3853.0 |                | 52.5 |
| 9          | 25.372.3953.0 |                | 60.0 |
| 10         | 25.372.4053.0 |                | 67.5 |
| 11         | 25.372.4153.0 |                | 75.0 |
| 12         | 25.372.4253.0 |                | 82.5 |

| 8413 B/.. |               | spacing 7.62mm |       |
|-----------|---------------|----------------|-------|
| poles     | part no.      | part no.       |       |
|           | marked        | unmarked       |       |
| 2         | 25.380.0253.0 | 25.380.3253.0  | 7.62  |
| 3         | 25.380.0353.0 | 25.380.3353.0  | 15.24 |
| 4         | 25.380.0453.0 | 25.380.3453.0  | 22.86 |
| 5         | 25.380.0553.0 | 25.380.3553.0  | 30.48 |
| 6         | 25.380.0653.0 | 25.380.3653.0  | 38.10 |
| 7         | 25.380.0753.0 | 25.380.3753.0  | 45.72 |
| 8         | 25.380.0853.0 | 25.380.3853.0  | 53.34 |
| 9         | 25.380.0953.0 | 25.380.3953.0  | 60.64 |
| 10        | 25.380.1053.0 | 25.380.4053.0  | 68.58 |
| 11        | 25.380.1153.0 | 25.380.4153.0  | 76.20 |
| 12        | 25.380.1253.0 | 25.380.4253.0  | 83.82 |

| 8413 S/..W |               | spacing 7.62 mm |       |
|------------|---------------|-----------------|-------|
| poles      | part no.      | part no.        |       |
|            | unmarked      |                 |       |
| 2          | 25.392.3253.0 |                 | 7.62  |
| 3          | 25.392.3353.0 |                 | 15.24 |
| 4          | 25.392.3453.0 |                 | 22.86 |
| 5          | 25.392.3553.0 |                 | 30.48 |
| 6          | 25.392.3653.0 |                 | 38.10 |
| 7          | 25.392.3753.0 |                 | 45.72 |
| 8          | 25.392.3853.0 |                 | 53.34 |
| 9          | 25.392.3953.0 |                 | 60.64 |
| 10         | 25.392.4053.0 |                 | 68.58 |
| 11         | 25.392.4153.0 |                 | 76.20 |
| 12         | 25.392.4253.0 |                 | 83.82 |

See page 145 for the use of fixing brackets, end plates, and coding pieces.

Accessories  
 fixing bracket

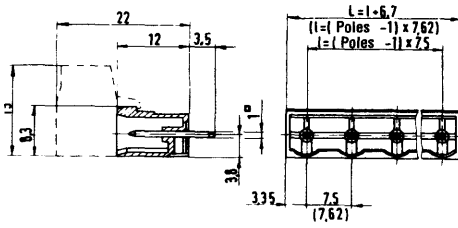
25.523.2453.0

# Type 8313 S/..G Type 8413 S/..G

spacing 7.5/ 7.62 mm

## Vertical socket

plug-in perpendicular to PC board



cross section 1 x 1  
diameter of drilling hole 1.4 mm

| 8313 S/..G |               | spacing 7.5 mm |
|------------|---------------|----------------|
| poles      | part no       | l              |
|            | unmarked      |                |
| 2          | 25.370.3253.0 | 7.5            |
| 3          | 25.370.3353.0 | 15.0           |
| 4          | 25.370.3453.0 | 22.5           |
| 5          | 25.370.3553.0 | 30.0           |
| 6          | 25.370.3653.0 | 37.5           |
| 7          | 25.370.3753.0 | 45.0           |
| 8          | 25.370.3853.0 | 52.5           |
| 9          | 25.370.3953.0 | 60.0           |
| 10         | 25.370.4053.0 | 67.5           |
| 11         | 25.370.4153.0 | 75.0           |
| 12         | 25.370.4253.0 | 82.5           |

| 8413 S/..G |               | spacing 7.62 mm |
|------------|---------------|-----------------|
| poles      | part no       | l               |
|            | unmarked      |                 |
| 2          | 25.390.3253.0 | 7.5             |
| 3          | 25.390.3353.0 | 15.0            |
| 4          | 25.390.3453.0 | 22.5            |
| 5          | 25.390.3553.0 | 30.0            |
| 6          | 25.390.3653.0 | 37.5            |
| 7          | 25.390.3753.0 | 45.0            |
| 8          | 25.390.3853.0 | 52.5            |
| 9          | 25.390.3953.0 | 60.0            |
| 10         | 25.390.4053.0 | 67.5            |
| 11         | 25.390.4153.0 | 75.0            |
| 12         | 25.390.4253.0 | 82.5            |

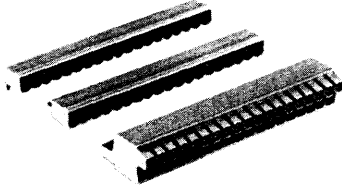
Z5.523.2453.0

# Pluggable terminal strips for printed circuits

2.5 mm<sup>2</sup>

Color: black - 5mm / light grey - 5.08mm  
 rated cross section 2.5 mm<sup>2</sup>  
 solid/fine stranded  
 rated voltage 250V~, 300V  
 (VDE 0110 Gr. C)

UL ratings: AWG No 22-12 300V 15 A  
 CSA ratings: AWG No 22-12 300 V 15 A



**MATERIALS:**

Insulating housing: polyamide, flame resistant  
 UL 94 V-0 continuous temp. 100°C  
 Clamping body and clamping screws: copper alloy, nickel plated  
 Solder pins and contact springs: tin plated bronze

All metal parts are either recessed or enclosed in the insulating body, providing circuit protection and dead-front safety. The terminal block connectors are provided with captive wire protection, and the terminal screws are captive and secured against loosening.

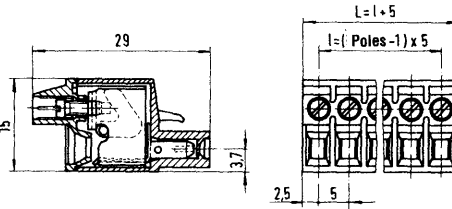
**spacing 5mm:** standard color: black  
 If in black, please order .1 instead of .0  
 (e.g. 25.320.0233.1)

**spacing 5.08mm:** standard color: light grey

## Type 8113 B/..TOP Type 8213 B/..TOP

spacing 5mm / 5.08mm

**Top Plug connector**



screw connection  
 Wire strip length 10 mm

| 8113 B/..Top |               | part no.      |     | spacing 5 mm |
|--------------|---------------|---------------|-----|--------------|
| poles        | part no.      | part no.      |     |              |
|              | marked        | unmarked      |     |              |
| 2            | 25.220.0253.1 | 25.220.3253.1 | 5   |              |
| 3            | 25.220.0353.1 | 25.220.3353.1 | 10  |              |
| 4            | 25.220.0453.1 | 25.220.3453.1 | 15  |              |
| 5            | 25.220.0553.1 | 25.220.3553.1 | 20  |              |
| 6            | 25.220.0653.1 | 25.220.3653.1 | 25  |              |
| 7            | 25.220.0753.1 | 25.220.3753.1 | 30  |              |
| 8            | 25.220.0853.1 | 25.220.3853.1 | 35  |              |
| 9            | 25.220.0953.1 | 25.220.3953.1 | 40  |              |
| 10           | 25.220.1053.1 | 25.220.4053.1 | 45  |              |
| 11           | 25.220.1153.1 | 25.220.4153.1 | 50  |              |
| 12           | 25.220.1253.1 | 25.220.4253.1 | 55  |              |
| 13           | 25.220.1353.1 | 25.220.4353.1 | 60  |              |
| 14           | 25.220.1453.1 | 25.220.4453.1 | 65  |              |
| 15           | 25.220.1553.1 | 25.220.4553.1 | 70  |              |
| 16           | 25.220.1653.1 | 25.220.4653.1 | 75  |              |
| 17           | 25.220.1753.1 | 25.220.4753.1 | 80  |              |
| 18           | 25.220.1853.1 | 25.220.4853.1 | 85  |              |
| 19           | 25.220.1953.1 | 25.220.4953.1 | 90  |              |
| 20           | 25.220.2053.1 | 25.220.5053.1 | 95  |              |
| 21           | 25.220.2153.1 | 25.220.5153.1 | 100 |              |
| 22           | 25.220.2253.1 | 25.220.5253.1 | 105 |              |
| 23           | 25.220.2353.1 | 25.220.5353.1 | 110 |              |
| 24           | 25.220.2453.1 | 25.220.5453.1 | 115 |              |

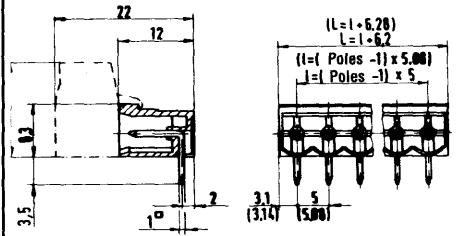
| 8213 B/..Top |               | part no.      |        | spacing 5.08 mm |
|--------------|---------------|---------------|--------|-----------------|
| poles        | part no.      | part no.      |        |                 |
|              | marked        | unmarked      |        |                 |
| 2            | 25.240.0253.0 | 25.240.3253.0 | 5.08   |                 |
| 3            | 25.240.0353.0 | 25.240.3353.0 | 10.16  |                 |
| 4            | 25.240.0453.0 | 25.240.3453.0 | 15.24  |                 |
| 5            | 25.240.0553.0 | 25.240.3553.0 | 20.32  |                 |
| 6            | 25.240.0653.0 | 25.240.3653.0 | 25.40  |                 |
| 7            | 25.240.0753.0 | 25.240.3753.0 | 30.48  |                 |
| 8            | 25.240.0853.0 | 25.240.3853.0 | 35.56  |                 |
| 9            | 25.240.0953.0 | 25.240.3953.0 | 40.64  |                 |
| 10           | 25.240.1053.0 | 25.240.4053.0 | 45.72  |                 |
| 11           | 25.240.1153.0 | 25.240.4153.0 | 50.80  |                 |
| 12           | 25.240.1253.0 | 25.240.4253.0 | 55.88  |                 |
| 13           | 25.240.1353.0 | 25.240.4353.0 | 60.96  |                 |
| 14           | 25.240.1453.0 | 25.240.4453.0 | 66.04  |                 |
| 15           | 25.240.1553.0 | 25.240.4553.0 | 71.12  |                 |
| 16           | 25.240.1653.0 | 25.240.4653.0 | 76.20  |                 |
| 17           | 25.240.1753.0 | 25.240.4753.0 | 81.28  |                 |
| 18           | 25.240.1853.0 | 25.240.4853.0 | 86.36  |                 |
| 19           | 25.240.1953.0 | 25.240.4953.0 | 91.44  |                 |
| 20           | 25.240.2053.0 | 25.240.5053.0 | 96.52  |                 |
| 21           | 25.240.2153.0 | 25.240.5153.0 | 101.60 |                 |
| 22           | 25.240.2253.0 | 25.240.5253.0 | 106.60 |                 |
| 23           | 25.240.2353.0 | 25.240.5353.0 | 111.76 |                 |
| 24           | 25.240.2453.0 | 25.240.5453.0 | 116.84 |                 |

## Type 8113 S/..W Type 8213 S/..W

spacing 5mm / 5.08mm

**Horizontal socket**

Plug-in parallel to PC board



cross section 1 x 1  
 diameter of drilling hole 1.4 mm

| 8113 S/..W |               | part no. |     | spacing 5 mm |
|------------|---------------|----------|-----|--------------|
| poles      | part no.      | part no. |     |              |
|            |               | unmarked |     |              |
| 2          | 25.332.3253.1 |          | 5   |              |
| 3          | 25.332.3353.1 |          | 10  |              |
| 4          | 25.332.3453.1 |          | 15  |              |
| 5          | 25.332.3553.1 |          | 20  |              |
| 6          | 25.332.3653.1 |          | 25  |              |
| 7          | 25.332.3753.1 |          | 30  |              |
| 8          | 25.332.3853.1 |          | 35  |              |
| 9          | 25.332.3953.1 |          | 40  |              |
| 10         | 25.332.4053.1 |          | 45  |              |
| 11         | 25.332.4153.1 |          | 50  |              |
| 12         | 25.332.4253.1 |          | 55  |              |
| 13         | 25.332.4353.1 |          | 60  |              |
| 14         | 25.332.4453.1 |          | 65  |              |
| 15         | 25.332.4553.1 |          | 70  |              |
| 16         | 25.332.4653.1 |          | 75  |              |
| 17         | 25.332.4753.1 |          | 80  |              |
| 18         | 25.332.4853.1 |          | 85  |              |
| 19         | 25.332.4953.1 |          | 90  |              |
| 20         | 25.332.5053.1 |          | 95  |              |
| 21         | 25.332.5153.1 |          | 100 |              |
| 22         | 25.332.5253.1 |          | 105 |              |
| 23         | 25.332.5353.1 |          | 110 |              |
| 24         | 25.332.5453.1 |          | 115 |              |

| 8213 S/..W |               | part no. |        | spacing 5.08 mm |
|------------|---------------|----------|--------|-----------------|
| poles      | part no.      | part no. |        |                 |
|            |               | unmarked |        |                 |
| 2          | 25.352.3253.0 |          | 5.08   |                 |
| 3          | 25.352.3353.0 |          | 10.16  |                 |
| 4          | 25.352.3453.0 |          | 15.24  |                 |
| 5          | 25.352.3553.0 |          | 20.32  |                 |
| 6          | 25.352.3653.0 |          | 25.40  |                 |
| 7          | 25.352.3753.0 |          | 30.48  |                 |
| 8          | 25.352.3853.0 |          | 35.56  |                 |
| 9          | 25.352.3953.0 |          | 40.64  |                 |
| 10         | 25.352.4053.0 |          | 45.72  |                 |
| 11         | 25.352.4153.0 |          | 50.80  |                 |
| 12         | 25.352.4253.0 |          | 55.88  |                 |
| 13         | 25.352.4353.0 |          | 60.96  |                 |
| 14         | 25.352.4453.0 |          | 66.04  |                 |
| 15         | 25.352.4553.0 |          | 71.12  |                 |
| 16         | 25.352.4653.0 |          | 76.20  |                 |
| 17         | 25.352.4753.0 |          | 81.28  |                 |
| 18         | 25.352.4853.0 |          | 86.36  |                 |
| 19         | 25.352.4953.0 |          | 91.44  |                 |
| 20         | 25.352.5053.0 |          | 96.52  |                 |
| 21         | 25.352.5153.0 |          | 101.60 |                 |
| 22         | 25.352.5253.0 |          | 106.60 |                 |
| 23         | 25.352.5353.0 |          | 111.76 |                 |
| 24         | 25.352.5453.0 |          | 116.84 |                 |

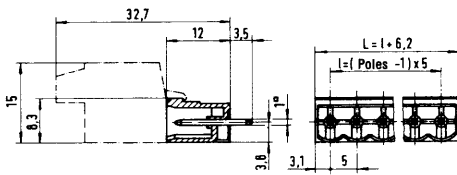
25.523.2453.0

See page 145 for the use of fixing brackets, end plates, and coding pieces.

# Type 8113 S/..G Type 8213 S/..G

spacing 5 / 5.08 mm

**Vertical socket**  
plug-in perpendicular to PC board



cross section 1 x 1  
diameter of drilling hole 1.4 mm

## 8113 S/..G spacing 5 mm

| poles | part no       | spacing 5 mm |
|-------|---------------|--------------|
|       | unmarked      |              |
| 2     | 25.330.3253.1 | 5            |
| 3     | 25.330.3353.1 | 10           |
| 4     | 25.330.3453.1 | 15           |
| 5     | 25.330.3553.1 | 20           |
| 6     | 25.330.3653.1 | 25           |
| 7     | 25.330.3753.1 | 30           |
| 8     | 25.330.3853.1 | 35           |
| 9     | 25.330.3953.1 | 40           |
| 10    | 25.330.4053.1 | 45           |
| 11    | 25.330.4153.1 | 50           |
| 12    | 25.330.4253.1 | 55           |
| 13    | 25.330.4353.1 | 60           |
| 14    | 25.330.4453.1 | 65           |
| 15    | 25.330.4553.1 | 70           |
| 16    | 25.330.4653.1 | 75           |
| 17    | 25.330.4753.1 | 80           |
| 18    | 25.330.4853.1 | 85           |
| 19    | 25.330.4953.1 | 90           |
| 20    | 25.330.5053.1 | 95           |
| 21    | 25.330.5153.1 | 100          |
| 22    | 25.330.5253.1 | 105          |
| 23    | 25.330.5353.1 | 110          |
| 24    | 25.330.5453.1 | 115          |

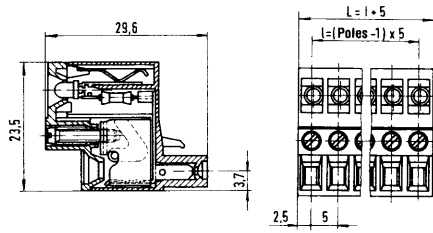
## 8213 S/..G spacing 5.08 mm

| poles | part no       | spacing 5.08 mm |
|-------|---------------|-----------------|
|       | unmarked      |                 |
| 2     | 25.350.3253.0 | 5.08            |
| 3     | 25.350.3353.0 | 10.16           |
| 4     | 25.350.3453.0 | 15.24           |
| 5     | 25.350.3553.0 | 20.32           |
| 6     | 25.350.3653.0 | 25.40           |
| 7     | 25.350.3753.0 | 30.48           |
| 8     | 25.350.3853.0 | 35.56           |
| 9     | 25.350.3953.0 | 40.64           |
| 10    | 25.350.4053.0 | 45.72           |
| 11    | 25.350.4153.0 | 50.80           |
| 12    | 25.350.4253.0 | 55.88           |
| 13    | 25.350.4353.0 | 60.96           |
| 14    | 25.350.4453.0 | 66.04           |
| 15    | 25.350.4553.0 | 71.12           |
| 16    | 25.350.4653.0 | 76.20           |
| 17    | 25.350.4753.0 | 81.28           |
| 18    | 25.350.4853.0 | 86.36           |
| 19    | 25.350.4953.0 | 91.44           |
| 20    | 25.350.5053.0 | 96.52           |
| 21    | 25.350.5153.0 | 101.60          |
| 22    | 25.350.5253.0 | 106.68          |
| 23    | 25.350.5353.0 | 111.76          |
| 24    | 25.350.5453.0 | 116.84          |

Z5.523.2453.0

# Pluggable terminal strips for printed circuits 2.5mm<sup>2</sup>

Color: black - 5mm / light grey - 5.08mm  
rated cross section 2.5 mm  
fine stranded  
rated voltage 24  
rated current 2.2 mA per display



### Description:

The 8113 "Top" plugs are designed with the clamping screw access parallel to the wire entry port. This is of special importance when used in restricted areas where a standard right angle configuration would be awkward or even impossible, such as stacked or panel mounted PC boards.

The 8113 TOP series features an insulating body of Polyamide 6.6; temperature range up to 100°C; a flammability rating of UL94 V-O, fully backed out clamping screws of zinc plated and chromated steel and galvanic tin plated bronze contact springs and solder pins.

The LED version is used wherever visual indication of the circuit condition is required.

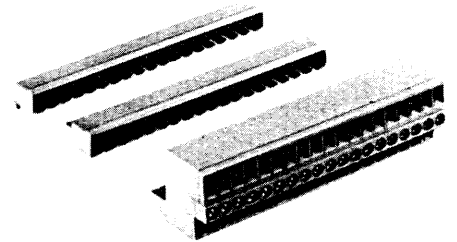
spacing 5mm: standard color: black

spacing 5.08mm: standard color: light grey

# Type 8113 B/..TOP LED

spacing 5 / 5.08 mm

**Top plug connector LED**  
with one negative pole



Wire strip length: 5.5 mm

## 8113 B/..Top LED spacing 5 mm

| poles | part no       | spacing 5 mm |
|-------|---------------|--------------|
|       | marked        |              |
| 2     | 25.230.0253.1 | 5            |
| 3     | 25.230.0353.1 | 10           |
| 4     | 25.230.0453.1 | 15           |
| 5     | 25.230.0553.1 | 20           |
| 6     | 25.230.0653.1 | 25           |
| 7     | 25.230.0753.1 | 30           |
| 8     | 25.230.0853.1 | 35           |
| 9     | 25.230.0953.1 | 40           |
| 10    | 25.230.1053.1 | 45           |
|       | unmarked      |              |
| 11    | 25.230.1153.1 | 50           |
| 12    | 25.230.1253.1 | 55           |
| 13    | 25.230.1353.1 | 60           |
| 14    | 25.230.1453.1 | 65           |
| 15    | 25.230.1553.1 | 70           |
| 16    | 25.230.1653.1 | 75           |
| 17    | 25.230.1753.1 | 80           |
| 18    | 25.230.1853.1 | 85           |
| 19    | 25.230.1953.1 | 90           |
| 20    | 25.230.2053.1 | 95           |
| 21    | 25.230.2153.1 | 100          |
| 22    | 25.230.2253.1 | 105          |
| 23    | 25.230.2353.1 | 110          |
| 24    | 25.230.2453.1 | 115          |

## X-ON Electronics

Largest Supplier of Electrical and Electronic Components

*Click to view similar products for [wieland](#) manufacturer:*

Other Similar products are found below :

[57.504.0053.7](#) [57.904.4955.0](#) [57.904.7455.0](#) [57.910.6153](#) [01.001.6553.0](#) [01.112.1453](#) [02.125.1600.0](#) [CWD012-5](#) [CWD012-L](#) [CWD02-A](#)  
[CWD02-D](#) [CWD02-H](#) [CWD02-K](#) [CWD02-M](#) [CWD02-Q](#) [CWD02-R](#) [CWD02-U](#) [CWD02-W](#) [CWD02-Y](#) [CWD03+](#) [CWD03-P](#)  
[70.105.1653.3](#) [70.331.1628.0](#) [70.340.1028.0](#) [70.343.2428.0](#) [70.353.4835.1](#) [70.355.2435.1](#) [70.364.4828.0](#) [70.372.1035.0](#) [70.372.4835.1](#)  
[70.372.4835.3](#) [70.400.3240.0](#) [70.500.4853.0](#) [70.810.1053.0](#) [70.955.2453.3](#) [71.321.1028.0](#) [71.350.1028.0](#) [72.250.1628.2](#) [72.250.2428.2](#)  
[72.250.2435.2](#) [72.301.1653.9](#) [72.325.1628.0](#) [72.353.1635.0](#) [73.352.6428](#) [73.353.4028.1](#) [73.363.6428.0](#) [77.340.1635.0](#) [78.111.0453.0](#)  
[78.903.0153.0](#) [78.914.0253.0](#)