

You are here: [Products](#) » [Heatsinks f.cool](#) » [Accessories for electronic components](#) » [Mounting material for single semiconductors and heatsinks](#) » [Insulating clamping parts for power transistors](#) » [ISP 220](#) » [ISP 220](#)

Heatsinks f.cool

- ▶ Profile heatsinks and fluid coolers
- ▶ Heatsinks and active heatsinks for processors
- ▶ Finger shapes heatsinks and small heatsinks
- ▶ Cooling aggregates
- ▼ Accessories for electronic components
 - ▶ Thermally conductive material
 - ▶ Fixing material for mechanical components
 - ▼ Mounting material for single semiconductors and heatsinks
 - Mounting kits for insulation of power transistors
 - [Insulating clamping parts for power transistors](#)
 - Mounts
 - Mounting parts for heatsinks
 - Insulating caps and insulator sleeves


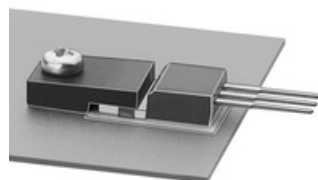
Cases f.case

Connectors f.con

Insulating clamping parts for power transistors

ISP 220

for semiconductor-design TO 220

[add to request](#)



Features Technical Drawing Service

for transistor material	TO 220
heat distortion	polyamide 6, GF reinforced 205(1,8 MPa)135(8 MPa)
dielectric strength	>27 kV/mm
dielectric constant	8 [100 Hz] / 4.5 [1 MHz]
dielectric loss factor	1300 [100 Hz] 450 [1 MHz]
specific volume resistance	>10 ¹³ Ω/cm
colour	black
class of flammibility	UL 94 V-0

X-ON Electronics

Largest Supplier of Electrical and Electronic Components

Click to view similar products for [Gate Drivers](#) category:

Click to view products by [Fisher](#) manufacturer:

Other Similar products are found below :

[00028](#) [00053P0231](#) [8967380000](#) [56956](#) [CR7E-30DB-3.96E\(72\)](#) [57.404.7355.5](#) [LT4936](#) [57.904.0755.0](#) [5801-0903](#) [5803-0901](#) [5811-0902](#)
[5813-0901](#) [58410](#) [00576P0030](#) [00581P0070](#) [5882900001](#) [00103P0020](#) [00600P0005](#) [00-9050-LRPP](#) [00-9090-RDPP](#) [5951900000](#) [01-](#)
[1003W-10/32-15](#) [LTI LA6E-1S-WH-RC-FN12VXCR1](#) [0131700000](#) [00-2240](#) [LTP70N06](#) [LVP640](#) [0158-624-00](#) [5J0-1000LG-SIL](#) [020017-13](#)
[LY1D-2-5S-AC120](#) [LY2-0-US-AC120](#) [LY2-US-AC240](#) [LY3-UA-DC24](#) [00-5150](#) [00576P0020](#) [00600P0010](#) [LZNQ2M-US-DC5](#) [LZNQ2-](#)
[US-DC12](#) [LZP40N10](#) [00-8196-RDPP](#) [00-8274-RDPP](#) [00-8275-RDNP](#) [00-8609-RDPP](#) [00-8722-RDPP](#) [00-8728-WHPP](#) [00-8869-RDPP](#) [00-](#)
[9051-RDPP](#) [00-9091-LRPP](#) [00-9291-RDPP](#)