
Six Band On Glass Antenna

- **Quad Band GSM**
- **3G Data**
- **WiFi**
- **On glass mount**
- **2 ~ 3 dBi Gain**

ADA-0068QU is an on glass Six band GSM/3G/WiFi antenna with SMA connector, 2.5 m RG174 cable as standard.



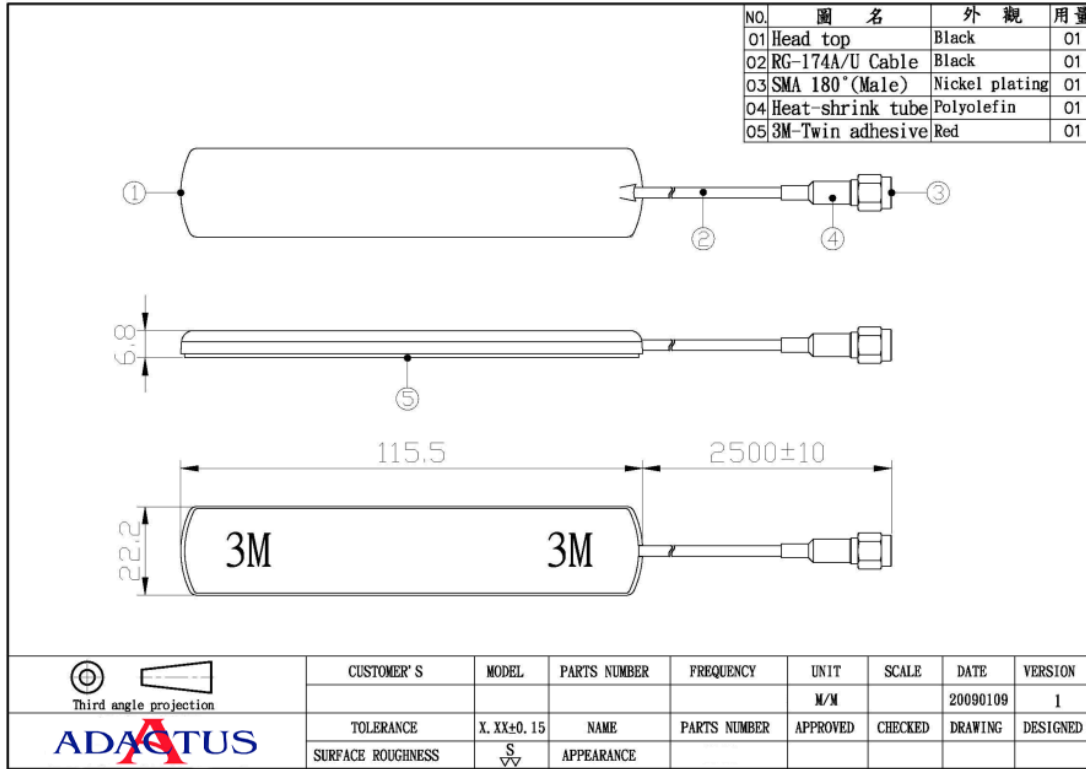
RoHS

Optimal position for automobile applications is on the inside of the windshield of the vehicle. Be certain to avoid coverage by metal objects in heated windshields, for optimal performance.

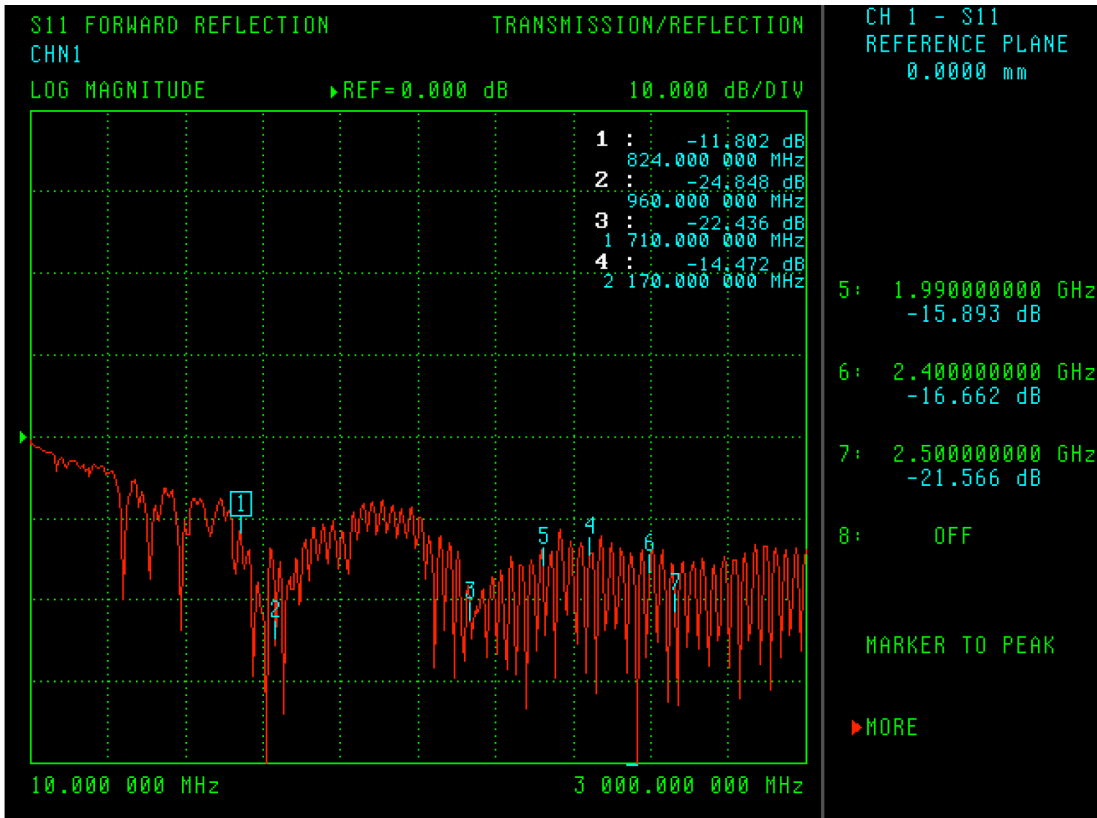
Specification

Antenna	Specification
Frequency Bands	800/900/1800/1900/2100/2400MHz
Frequency	824~960/1710~2170/2400~2500 MHz
Polarization	Vertical
V.S.W.R	<2.0:1
Impedance	50Ω
Gain	2~3 dBi
Return Loss	See Diagram
	Environmental Conditions
Operating Temperature	-40°C ~ + 70°C
Storage Temperature	-40°C ~ + 80°C
Relative Humidity	40% to 95%
	Mechanical Specification
Antenna Material	TPE
Antenna Color	Black
Cable	RG174, 2.5m
Connector	SMA (M)
Size	115 x 22 x 7mm
Weight	125g Max.
Mounting	Adhesive Tape

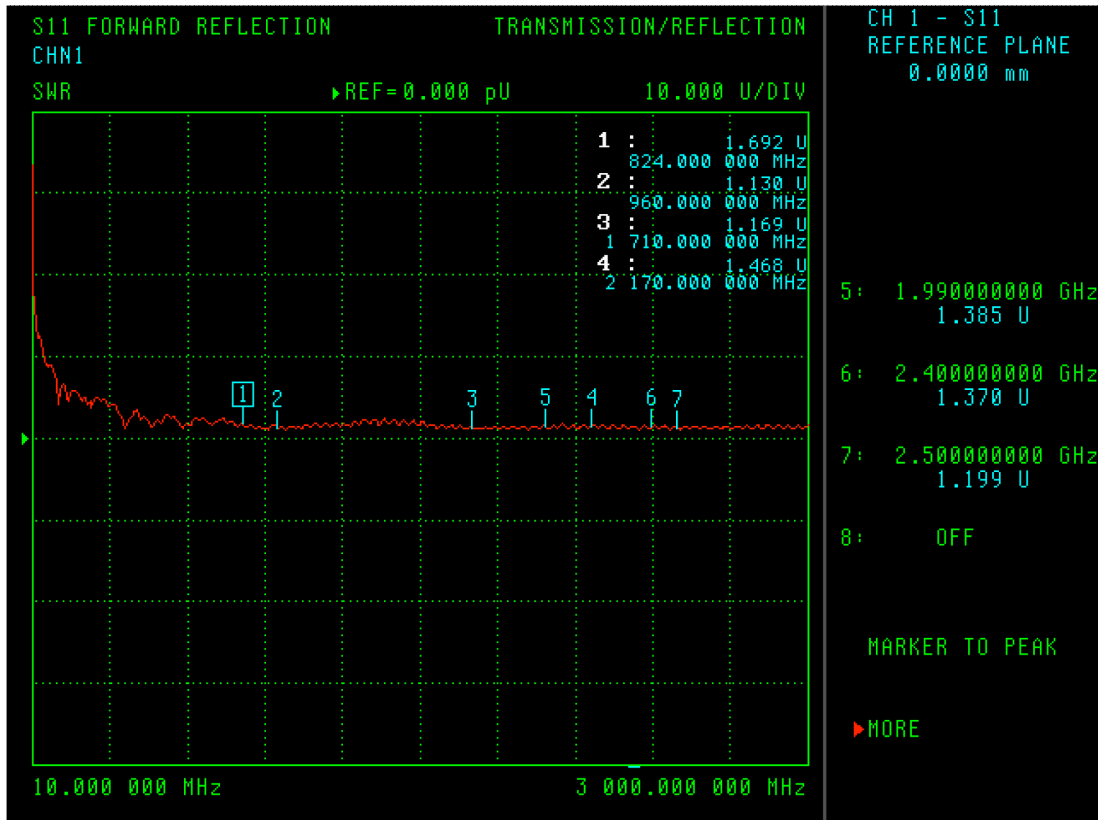
Mechanical Dimension



Return Loss



SWR



Ordering codes

TYPE	Description	Comment
ADA-0068QUW	On Glass Antenna	Six Band On Glass Antenna

For the latest updates, visit our Web site: www.adactus.se

Disclaimer

Information furnished is believed to be accurate and reliable. However, Adactus assumes no responsibility for the consequences of use of such information nor for any infringement of patents or other rights of third parties which may result from its use. Adactus reserves the right to make changes without further notice to any product herein to improve reliability, function or design. Adactus does not assume any liability arising out of the application or use of any product described herein.

This publication supersedes and replaces all information previously supplied. Adactus products are not authorised as critical components in life support devices or systems.

X-ON Electronics

Largest Supplier of Electrical and Electronic Components

Click to view similar products for [adactus](#) manufacturer:

Other Similar products are found below :

[ADA-76](#) [ADA WLAN 25254](#) [ADA-0087QU-I](#) [ADA-0087QU-L](#) [ADA-A101-S](#) [ADA-0086QU-I](#) [ADA0040](#) [ADA-0186QU](#) [ADA 0186 433](#)
[ADA-0062Q/U-SMA](#) [ADA-25252](#)