

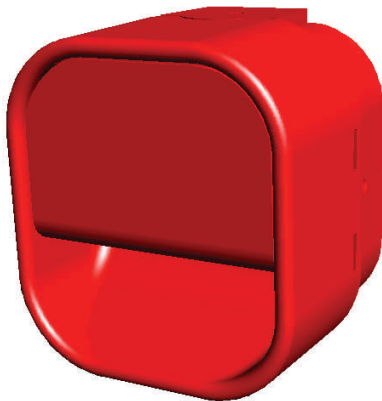


Clifford & Snell

CARILLON

Electronic Sounder

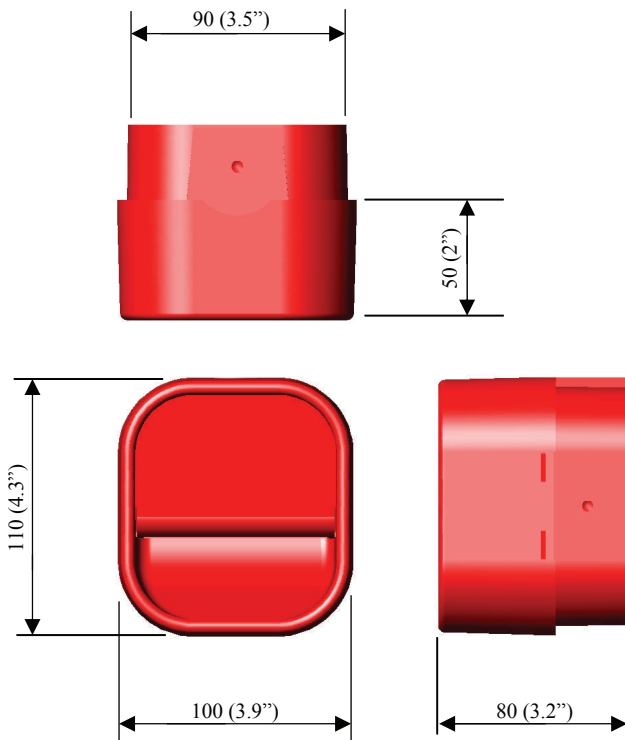
Tom Cribb Road, Thamesmead,
London SE28 0BH
Tel: +44 (0)20 8316 4477
or (0)20 8317 1717
Fax: +44 (0)20 8317 2400
Email: cliffordandsnell@aol.com
Web Site: www.cliffordandsnell.com



MAIN FEATURES

- Versatile compact sounder
- Low current consumption
- High sound output
- 2 stage alarm by 2 wire bi-polar and 3 wire polarised control
- Continuously rated
- Complies with BS 5839
- Easy installation
- For 3 wire 2 stage alarm systems, line integrity maybe monitored via reverse polarity
- 32 selectable tones meeting international regulations
- Sound selection via 5 way DIL switch
- Red flame retardant ABS plastic enclosure

DIMENSIONS (mm)



All dimensions are approximate only and subject to change without notice as are technical features resulting from continual development and improvement

TECHNICAL SPECIFICATION

- Operating temperature -25 to +40 deg C
- Storage temperature -40 to +70 deg C
- Operating voltage 24Vdc +/- 10%
- Relative humidity 95% @ 40 deg C
- IP65 rated
- Cable gland entry must be suitably sealed
- Weight 0.25Kg
- Sound output 104dB(A) @ 1 mtr
- Volume control giving 18dB(A) adjustment
- Minimum current consumption 20mA

MOUNTING

The Carillon alarm units should be mounted to a reasonably flat wall or bulkhead of suitable material using the internal fixing holes (mounting gasket supplied). The recommended fixing screws are dia 4.5max x 20mm long. To maintain the integrity of the weather seal, the cable must be fitted using a suitable sealed gland.

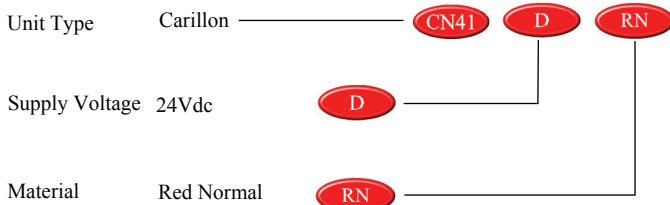
LINE MONITORING (DC Only)

- 3 Wire 2 stage or 2 wire single stage, monitor via reverse polarity
 - 2 Wire 2 stage i.e. bi-polar inputs, monitor via threshold (applied voltage <1V)
- End of line resistor. Minimum 3K3 ohm 0.5 watts, wire-wound or metal film type.

APPROVAL SPECIFICATION

BS EN 54-3 : 2001 incorporates amendment A1 : 2002

CONFIGURATOR



X-ON Electronics

Largest Supplier of Electrical and Electronic Components

Click to view similar products for [clifford](#) and [snell](#) manufacturer:

Other Similar products are found below :

[YA50/L/RF/WR](#) [YL50/L50/A/RF/WR](#) [YA80/D/RF/SU/WR](#) [FL40/N50/R/RN](#) [YL40/D50/R/RN/WR](#) [YL40/D50/A/RN/WR](#)

[YL50/N50/R/RF/WR](#) [YA50/N/RF/WR](#) [YA30/D/RF/WR](#) [YL50/D50/A/RF/WR](#) [YA50/D/RF/WR](#) [YL50/L50/R/RF/WR](#) [YL50/D50/R/RF/WR](#)