

BMP®21 Voice & Data Comm Material:

B-422 Polyester Material

Permanent adhesive, good for powder-coated/textured surfaces making it ideal for pat panels, outlets and faceplate identification. Best on flat surfaces. Temp. Range: -40°F to 212°F (-40°C to 100°C). UL recognized.

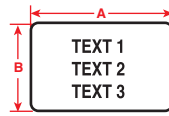


Figure 29

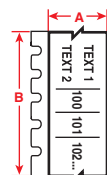


Figure 59

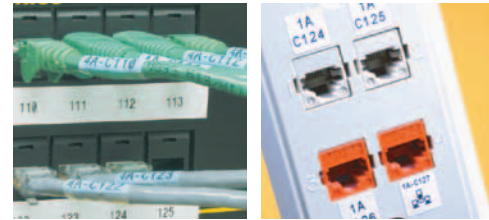


Diagram	Part Number	B#	Material	Color	Sized To Fit	Label Width A Inch	Label Height B Inch	Labels/Roll
B-422 Polyester Material								
Fig. 59	XC-375-422	B-422	Polyester	BK on WT	Label Punch Blocks or Multiple Ports on Cont. Tape	0.375 (9.530)	30 ft. (9.140 m)	1 roll (cont.)
Fig. 59	XC-475-422	B-422	Polyester	BK on WT	Label Punch Blocks or Multiple Ports on Cont. Tape	0.475 (12.070)	30 ft. (9.140 m)	1 roll (cont.)
Fig. 29	X-7-422	B-422	Polyester	BK on WT	Label Each Port	0.500 (12.700)	0.500 (12.700)	350
Fig. 29	X-17-422	B-422	Polyester	BK on WT	Label Faceplate	1.000 (25.400)	0.500 (12.700)	500
Fig. 29	X-29-422	B-422	Polyester	BK on WT	Label Faceplate	1.500 (38.100)	0.500 (12.700)	500

BMP®21 Voice & Data Comm Material:

Racks, Bays, Frames, Public Network & Data Center ID

- **B-422 Polyester Material** - Permanent adhesive, good for powder-coated/textured surfaces. Best on flat surfaces. Temp. Range: -40°F to 212°F (-40°C to 100°C). UL recognized.
- **B-483 Polyester Material** - Permanent adhesive for powder-coated/textured surfaces. Best on flat surfaces Temp. Range: -40°F to 248°F (-40°C to 120°C). UL recognized.
- **B-595 Indoor/Outdoor Vinyl Material** - Permanent adhesive, very pliable, good for rough surfaces and outdoor use, wide range of colors. Temp. Range: -40°F to 248°F (-40°C to 120°C). UL recognized.

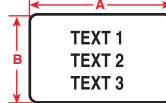


Figure 29



Figure 33



Diagram	Part Number	B#	Material	Color	Label Width A Inch (mm)	Label Height B Inch (mm)	Labels/Roll
B-422 Polyester Material							
Fig. 29	X-17-422	B-422	Polyester	BK on WT	1.000 (25.4)	0.500 (12.7)	500
Fig. 29	X-29-422	B-422	Polyester	BK on WT	1.500 (38.1)	0.500 (12.7)	500
Fig. 29	X-30-422	B-422	Polyester	BK on WT	1.500 (38.1)	0.750 (19.1)	250
Fig. 29	X-19-422	B-422	Polyester	BK on WT	1.000 (25.4)	1.000 (25.4)	250
Fig. 33	XC-1000-422	B-422	Polyester	BK on WT	1.000 (25.4)	30 ft. (9.1 m)	1 roll (cont.)
B-483 Polyester Material							
Fig. 29	X-17-483	B-483	Polyester	BK on WT	1.000 (25.4)	0.500 (12.7)	500
Fig. 29	X-61-483	B-483	Polyester	BK on WT	2.000 (50.8)	0.500 (12.7)	100
Fig. 29	X-20-483	B-483	Polyester	BK on WT	2.000 (50.8)	1.000 (25.4)	100
B-595 Indoor/Outdoor Vinyl Material							
Fig. 33	XC-500-595-YL-BK	B-595	Vinyl	BK on YL*	0.500 (12.7)	30 ft. (9.1 m)	1 roll (cont.)
Fig. 33	XC-1000-595-YL-BK	B-595	Vinyl	BK on YL*	1.000 (25.4)	30 ft. (9.1 m)	1 roll (cont.)
Fig. 33	XC-1500-595-YL-BK	B-595	Vinyl	BK on YL*	1.500 (38.1)	30 ft. (9.1 m)	1 roll (cont.)

*also available in Red, Orange, Green, Blue, White, and Clear.



IDXPERT Print Ribbons - Did You Know?

Did you know that the necessary print ribbons for the IDXPERT™ Handheld Labeler are self-contained within the label roll cartridge? There's no need to order or load separate print ribbons!



X-ON Electronics

Largest Supplier of Electrical and Electronic Components

Click to view similar products for [brady](#) manufacturer:

Other Similar products are found below :

[BMP21-PLUS-KIT1](#) [60338](#) [M71C-2000-595-YL](#) [66271](#) [67063](#) [PSPT-375-175-YL](#) [PTL-28-427](#) [DAT-18-502-10](#) [DAT-38-292-1](#) [DAT-38-292-2.5](#) [DAT-43-502-1](#) [131070](#) [134289](#) [134304](#) [143091](#) [ECL-107-619](#) [B33-9-427](#) [18406](#) [18453](#) [18617](#) [18669](#) [LAT-31-747-1](#) [LAT-47-707-10](#) [LAT-5-747-10](#) [SCN03-1](#) [SCN03-8](#) [SCN10-7](#) [SCN10-8](#) [29750](#) [30153](#) [18472](#) [18489](#) [18491](#) [18581](#) [AF-1-9-PK](#) [PSPT-187-175-YL](#) [29690](#) [PTL-17-422](#) [PTL-42-439](#) [PWC-PK-1](#) [30206](#) [33108](#) [3450-A](#) [3450-D](#) [3450-G](#) [34511](#) [34513](#) [34515](#) [34517](#) [34518](#)