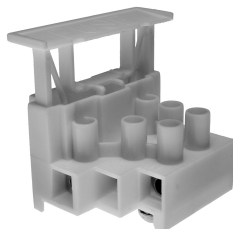


FUSES & FUSEHOLDERS

6.3x25mm (1/4"x1") Fused Terminal Blocks

- 2 or 3 pole terminal block
- Accepts 5x20mm & 6.3x25mm (1"x1/4") fuses to IEC257
- Anti rotation spigot
- IP20 finger protection
- Cable entry 3x1.5mm² or 2x2.5mm²
- Meets creepage and clearance requirements of IEC (8mm)
- 16mm fixing pitch
- 2 pole supplied in 3 pole housing
- Supplied complete with earth screw and washer
- CE approved

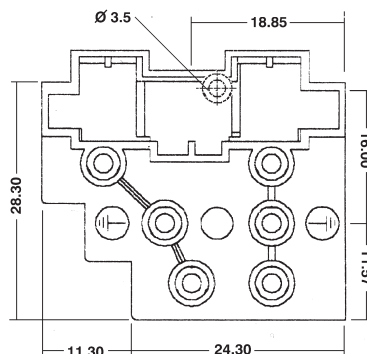
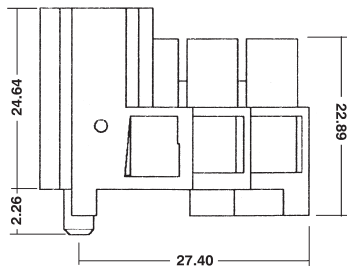
CMFTB



TYPE NO.	POLES
CMFTB/2	2
CMFTB/3	3

SPECIFICATION

Rating	Fuseholder 250V AC Terminal 450V AC
Current rating	Fuseholder 13A Terminal 20A
Moulding	UL94-V0 flame retardant PA
Terminal	Brass, nickel plated
Fuse clip	Phosphor bronze
Temperature	-20° to 125°C
Fuse size	5 x 20mm & 6.3 x 25mm (1"x1/4") glass or ceramic
Screws	M3.6
Terminal marking	L=Live/ ⊕=Earth/ N=Neutral



PCB Fuseholder for Plug-in Fuses

- Precision turned pins
- Twist free construction
- Low profile
- High retention design prevents fuse walkout during heavy vibrations
- Side and end stackable
- High solderability pin design
- Anti wicking pin design
- UL94-V0 mouldings
- 200 operations minimum life

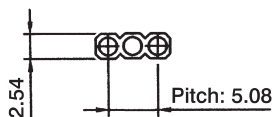
CSICS



TYPE NO.	POLES
CSICS/3/101	2

SPECIFICATION

Rating	3A
Contacts/Resistance	Tinned nickel plated Brass, <5mΩ
Temperature range	-55°C to 125°C
Contact	Beryllium copper, heat treated
Plating	2µm/80µ" nickel 5µm/200µ" tin
Insulation Resistance	10 ⁹ MΩ at 100V
Insertion force	<250g
Withdrawal force	>50g



PCB
TERMINAL
BLOCKS

INTER-
CONNECTION

FUSES &
FUSE-
HOLDERS

LEDs &
INDICATORS

MINIATURE
SWITCHES

LIMIT &
SAFETY
SWITCHES

CONTROL
PRODUCTS

INTERFACE
MODULES &
SUPPORTS

RELAY
BASES

ENCLOSURES

BATTERIES

TRANS-
FORMERS

X-ON Electronics

Largest Supplier of Electrical and Electronic Components

Click to view similar products for [camden manufacturer](#):

Other Similar products are found below :

[412689X](#) [CTBP92VE/12R](#) [CTBP9350/12](#) [IND515205-240-T/GRN](#) [IND515205-240-T/RD](#) [IND5032405-240-T/GRN](#) [CE10.00.EI](#)
[C192SHAND](#) [CNMB/6ST/2](#) [CNMB/4ST/2](#) [CSACST004](#) [CTBP9200/9](#) [CIME/M/BE2250SS](#) [CHH64E1BL](#) [CIM/15W-DMFS](#) [CHHBAT2GY](#)
[CFTBN/2](#) [CCB2S1/04](#) [CHDX6-221C](#) [CHDX8-224](#) [CHDASMP29](#) [CHDASMP34](#) [CHDX810DD](#) [CHDX811DD](#) [CCTTM40LR](#)
[CTBP92VJ/5S](#) [CTBP92VJ/8R](#) [CTSN431/12/M](#) [CTSN433/12/M](#) [CUABOX006](#) [CE10.00.FM](#) [CBRPH-BLK](#) [BIM2003/13-WH/WH](#)
[RX2008/S-5-WH](#) [CBARD-CAR](#) [CRDCG0007](#) [CNMB/4/KIT](#) [CTB5050/5](#) [CTBP92HE/11](#) [CTBP9358/10AO](#) [CHH66C2GY](#) [CHH456PBK](#)
[CHH451ABK](#) [CIM/9W-DMFS](#) [CIM/25W-DMFS](#) [RTM5006/16-NC-BLK](#) [IND5032405-125-T/AMB](#) [CCB1S1/03](#) [CCD2S1/04](#) [CCE1S1/05](#)