

W 18-3: Incorporated application Know-how, expanded functionality, high level of equipment availability



appropriate sensor can be selected from the W 18-3 Series: With precision background suppression, the WT 18-3 Series is ideal for demanding applications. The scanning distance can be simply and quickly adjusted, either via conventional potentiometer or via double Teach buttons, with fine adjustment option. Scanners with red-light transmitters can be quickly and accurately aligned with the object to be sensed. Scanners with infrared light beams are particularly useful in arduous environmental conditions.

WL 18-3, using an auto-collimation optical principle, are designed to optically focus upon the object in a reliable manner and utilising a visually defined small red spot of light, simple and quick alignment is possible.

WS/WE 18-3 – ideal for applications where greater system reserve is required. Using an auto-collimation optical principle, designed to optically focus upon the object in a reliable manner and utilising a visually defined small red spot of light.

The main target industries for the W 18-3 Series are:

- Packaging industry,
- Food and Confectionery industry,
- Storage and Conveying,
- Wood Processing.

	Photoelectric proximity switches, FGS
	Photoelectric reflex switches
	Through-beam photoelectric switches

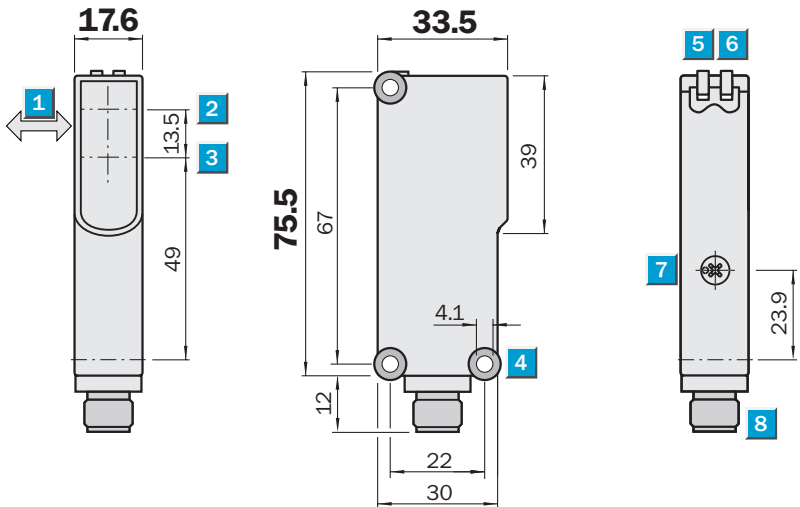
In Automation Technology, customers demand optical sensors, which can reliably solve complex applications, which are capable of operating at high processing speeds and which provide a high level of in-service availability under arduous operating conditions. To meet these demands the W 18-3 Series is recommended. The W 18-3 Series is the result of a vast amount of experience and many years of knowledge gathered from thousands of applications, from which the user can now benefit. Depending upon the task required, the most



Scanning distance
 50 ... 700 mm
Photoelectric proximity switches

- Precise background suppression; suitable for high demanding applications
- Scanning range adjustable via potentiometer
- Insensitive to external light sources (HF lamps)
- Operation reliability with equipment facing each other
- Permissible ambient operating temperature $-40^{\circ}\text{C} \dots +60^{\circ}\text{C}$

Dimensional drawing

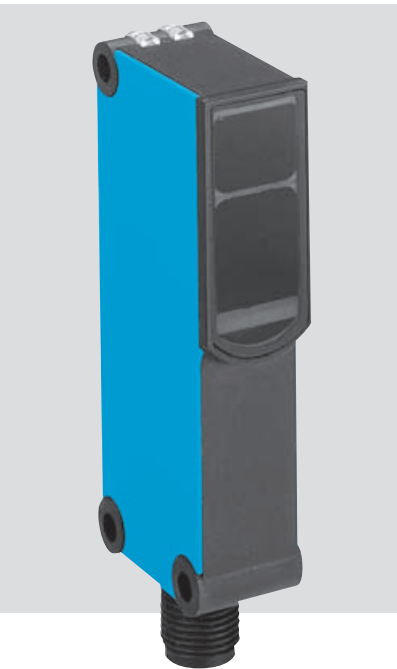


Adjustments possible

All types

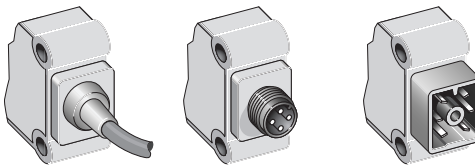


- 1 Standard direction of the material being scanned
- 2 Optical axis sender
- 3 Optical axis receiver
- 4 Mounting hole $\varnothing 4.1$ mm
- 5 LED indicator, yellow; status of received light beam
- 6 LED indicator, green; power on
- 7 Scanning distance adjustment, Poti 4 turn
- 8 Plug M12, 4-pin or 2 m cable or cubic plug, 6-pin



Connection types

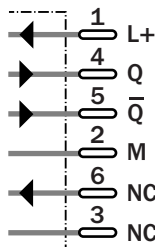
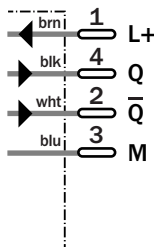
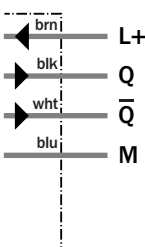
WT18-3P110	WT18-3P410	WT18-3P610
WT18-3N110	WT18-3N410	WT18-3N610



4 x 0.25 mm²

4-pin, M12

6-pin



Accessories

- Connectors
- Mounting systems

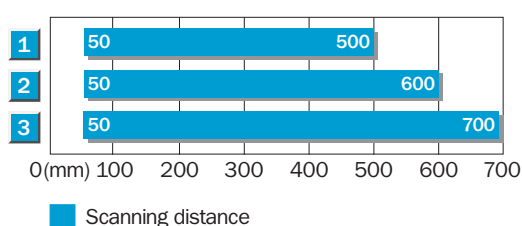
Technical data		WT18-3	P110	P410	P610	N110	N410	N610				
Scanning distance, adjustable ¹⁾	50 ... 700 mm, 90 % remission											
Visible range ¹⁾	10 ... 700 nm											
Adjustment	Teach-in, via Poti, 4 turn											
Light source ²⁾ , light type	LED, infrared light											
Light spot diameter	20 mm at 400 mm											
Supply voltage V_S	10 ... 30 V DC ³⁾											
Residual ripple ⁴⁾	< 5 V_{SS}											
Current consumption ⁵⁾	< 60 mA											
Output current I_A max.	< 100 mA											
Switching outputs	PNP, antivalent											
	NPN, antivalent											
Response time ⁶⁾	< 700 μ s											
Switching frequency max. ⁷⁾	700/s											
Connection types	Cable ⁸⁾ , 2 m, 4 wire											
	M12 plug, 4-pin											
	Cubic plug, 6-pin											
VDE protection class cable ⁹⁾	<input type="checkbox"/>											
Circuit protection ¹⁰⁾	A, B, C											
Enclosure rating	IP 67											
Ambient temperature	Operation -40 °C ... +60 °C											
	Storage -40 °C ... +75 °C											
Weight	With cable, 2 m, approx. 120 g											
	With M12 plug, approx. 40 g											
	With cubic plug, approx. 40 g											
Housing material	ABS											

¹⁾ Object with 90 % remission (according to standard white DIN 5033) ³⁾ Limit values
²⁾ Average service life 100,000 h at $T_A = +25\text{ °C}$ ⁴⁾ Must be within V_S tolerances
⁵⁾ Without load ⁶⁾ Signal transit time with resistive load
⁷⁾ With light/dark ratio 1:1 ⁸⁾ Do not bend below 0 °C
⁹⁾ Reference voltage 50 V DC ¹⁰⁾ A = V_S connection reverse-polarity protected
B = Outputs short-circuit protected
C = Interference pulse suppression

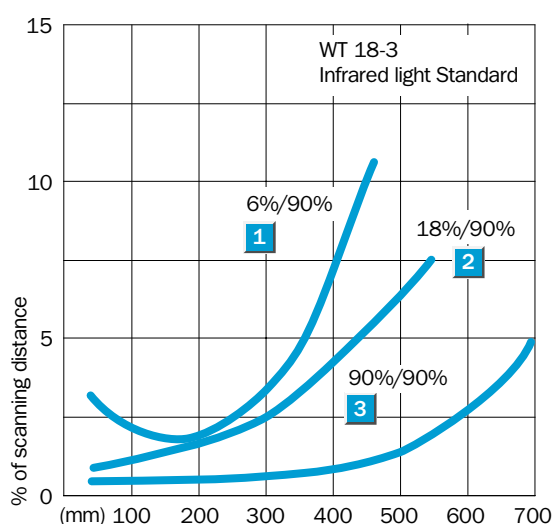
Adjustment via Poti

1. Position the object in the path of the beam.
2. By rotating the potentiometer to the right until the yellow LED illuminates continuously = object is positively detected.
3. If necessary, fine adjustments to the scanning distance can be made to suit the conditions of the application:
 minimal rotation of the potentiometer to the right = scanning distance will be increased,
 minimal rotation of the potentiometer to the left = scanning distance will be decreased.

Scanning distance



- 1 Scanning distance on black, 6 % remission
- 2 Scanning distance on grey, 18 % remission
- 3 Scanning distance on white, 90 % remission



Order information

Type	Part no.
WT18-3P110	1 025 887
WT18-3P410	1 025 889
WT18-3P610	1 025 890
WT18-3N110	1 025 891
WT18-3N410	1 025 893
WT18-3N610	1 025 894

X-ON Electronics

Largest Supplier of Electrical and Electronic Components

Click to view similar products for [Photoelectric Sensors](#) category:

Click to view products by [Sick](#) manufacturer:

Other Similar products are found below :

[E3JM-DS70R4T-US](#) [E3L2DC4](#) [E3RA-DN12 2M](#) [E3RA-DP12 2M](#) [E3S5LE4S](#) [E3S-AD38](#) [E3S-CR11 5M](#) [E3SCT11D5M](#) [E3SCT11M1J03M](#)
[E3T-SL14R](#) [E3T-SL24 5M](#) [E3T-ST12R](#) [E3X-CN02](#) [E3X-CN11 5M](#) [E3X-CN21 10M](#) [E3ZM-B66](#) [E3ZM-CL81H 2M](#) [E3Z-T62 2M](#)
[NJL5303R-TE1](#) [PB10CNT15PO](#) [PD60CNX20BP](#) [CX-491-P-J](#) [CX-491-Z](#) [XUM2BKCNL2T](#) [XUM2BKCNL2T](#) [XUM2BNANL2R](#) [Y92E-](#)
[ES30M](#) [Y92E-GS08SS](#) [ZXTDS04T](#) [ZX-XC4A 4M](#) [E3E23Y2US](#) [E3JM-DS70S4-US](#) [E3RA-RN11 2M](#) [E3S5LE42M](#) [E3S-LS20XB4 5M](#)
[E3TFD14N](#) [E3T-FD14R](#) [E3T-SL21 5M](#) [E3T-SL21M](#) [E3T-ST11R](#) [E3T-ST12 5M](#) [E3X-DA41-S-M1J 0.3M](#) [E3X-DAB6](#) [E3X-DAG8](#) [E3ZM-](#)
[B86](#) [E3ZM-CR81 2M](#) [E3ZM-CR86](#) [E3Z-T61A-L 2M](#) [ZX-XGC2R](#) [ZX-XB1A](#)