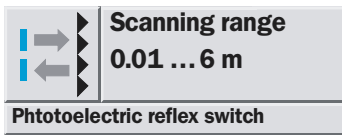


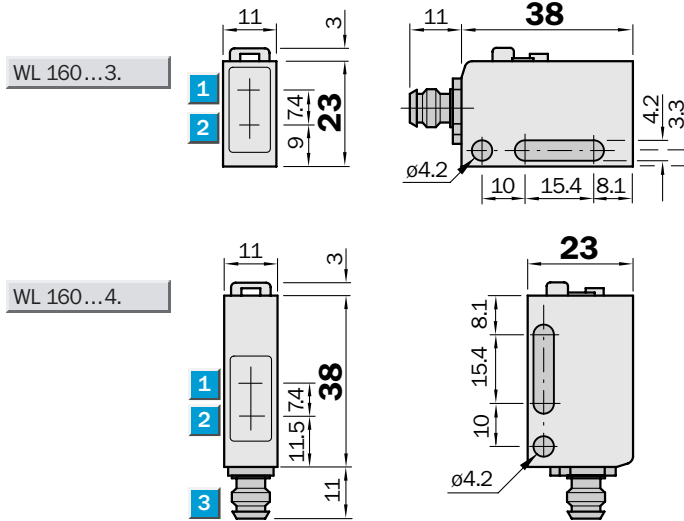
WL 160 Photoelectric Reflex Switch, Red Light - DC



Photoelectric reflex switch

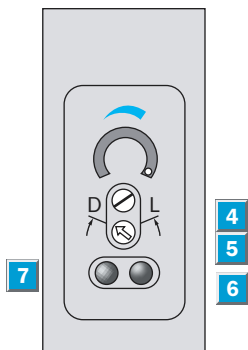
- Horizontal and vertical models
- Polarizing filter for detecting objects with reflecting surfaces
- Contamination control with green LED indicator and contamination control output

Dimensional drawing



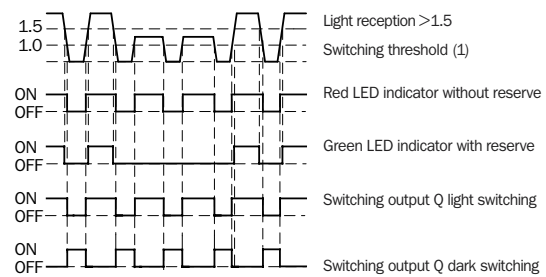
Setting options

All types



- 1 Optics center, receiver
- 2 Optics center, transmitter
- 3 Plug M 8 or connection cable
- 4 Sensitivity control
- 5 Light/dark rotary switch:
L = light switching
D = dark switching
- 6 Red LED signal strength indicator (Status output)
- 7 Green LED signal strength indicator (Operating reserve)

Operating diagram



Accessories

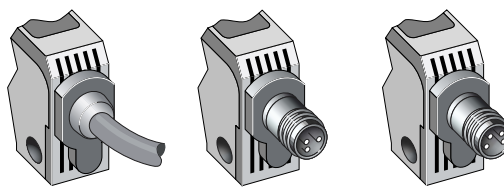
Cable receptacles

Mounting bracket (included)

Reflectors (P250 included)

Connection type

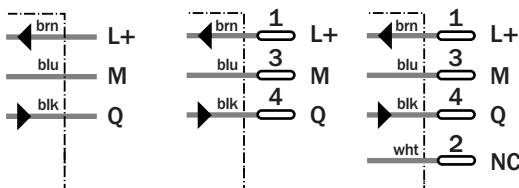
WL 160-E132	WL 160-E330	WL 160-E430
WL 160-E142	WL 160-E340	WL 160-E440
WL 160-F132	WL 160-F330	WL 160-F430
WL 160-F142	WL 160-F340	WL 160-F440



3x0.2 mm²

3 pin, M 8

4 pin, M 8



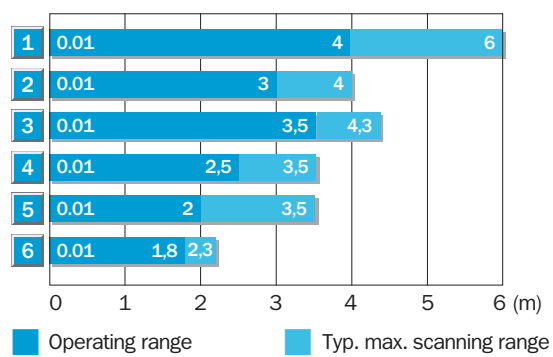
NC= not connected

WL 160

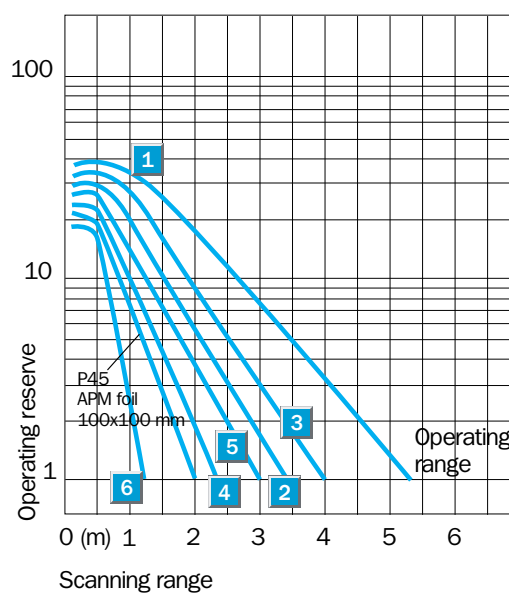
Specifications	WL 160-	F132	F330	F430	E132	E330	E430	F142	F340	F440	E142	E340	E440
Housing shape	Horizontal												
	Vertical												
Scanning range typ. max./on reflector	0.01 ... 6 m/PL 80 A												
	typ. max./on reflector 0.005 ... 4 m/P 250 (supplied w. equip.)												
Operating range	0.01 ... 3 m/P 250												
Adjustable sensitivity	Potentiometer, 2 rotations w. scaling 270°												
Light source¹⁾, light type	LED, red light with polarizing filter												
Light spot diameter	Approx. 300 mm at 3 m distance												
Transmitter dispersion angle	Approx. 4.5°												
Supply voltage V_S	DC 10 ... 30 V ²⁾												
Residual ripple ³⁾	± 10 %												
Current consumption ⁴⁾	≤ 25 mA												
Switching outputs	PNP, open collector: Q												
	NPN, open collector: Q												
Output current I_A max.	100 mA												
Light receiver, switching type	Light/dark switching per rotary switch												
Response time ⁵⁾ /Max. switching frequ. ⁶⁾	≤ 0.5 ms /1000/s												
Connection type: connection cable	PVC, 2 m ⁷⁾ ; 3 x 0.2 mm ² , ø 4.2 mm												
	plug 3 pin, M8												
	plug 4 pin, M8												
VDE protection class⁹⁾	□												
Protection circuits ⁹⁾	A, B, C, D												
Enclosure rating	IP 67												
Ambient temperature	Operation -25 ... +55 °C												
	Storage -40 ... +70 °C												
Weight	With connection cable approx. 60 g												
	With plug approx. 20 g												
Housing material	Housing: PBT; optics: PMMA												

- 1) Average service life 100,000 h at $T_U = +25 °C$
- 2) Limit values
- 3) May not exceed or fall short of V_S tolerances
- 4) Without load
- 5) Signal operating time with ohmic load
- 6) With light/dark ratio 1:1
- 7) Do not bend connection cable below 0 °C
- 8) Rated voltage DC 50 V
- 9) A = V_S connections reverse-polarity protected
B = Inputs and outputs reverse-polarity protected
C = Interference pulse suppression
D = Outputs overload and short-circuit protected

Scanning range and operating reserve



Reflector type	Operating Range
1 PL80 A	0.01 ... 4 m
2 PL250	0.01 ... 3 m
3 PL50 A/PL40 A	0.01 ... 3.5 m
4 PL30 A/PL31 A	0.01 ... 2.5 m
5 PL20 A	0.01 ... 2 m
6 Reflector tap Diamond Grade	0.01 ... 1.8 m



Ordering information

Type	Order no.
WL 160-F132	6 022 767
WL 160-F330	6 022 771
WL 160-F430	6 022 772
WL 160-F142	6 022 769
WL 160-F340	6 022 773
WL 160-F440	6 022 774
WL 160-E132	6 022 759
WL 160-E330	6 022 763
WL 160-E430	6 022 764
WL 160-E142	6 022 761
WL 160-E340	6 022 765
WL 160-E440	6 022 766

X-ON Electronics

Largest Supplier of Electrical and Electronic Components

Click to view similar products for [sick manufacturer](#):

Other Similar products are found below :

[6-020-768](#) [PL20A](#) [GRL18-P2437](#) [GRSE18-P2422](#) [IM05-0B8NS-ZT1](#) [IM08-02BPS-ZWK](#) [IM08-1B5PS-ZT1](#) [IME18-05BPSZW2K](#) [IME18-12NPSZC0K](#) [KT6W-2P5116](#) [GRSE18-P2447](#) [GRTE18-P2412](#) [GRTE18-P2442](#) [IM30-15NPS-ZW1](#) [IME12-04NPSZW2K](#) [IME12-08NPSZW2S](#) [KTM-MB31111P](#) [VTE18-4N2212](#) [VTE18-4P8740](#) [LL3-TB01](#) [MZT8-28VPS-KP0](#) [WLL180T-P434](#) [WL260-R270](#) [VTF18-4P1612](#) [VTF-18-4N1240](#) [VL180-2P42436](#) [WTE280-2P1131](#) [WTE11-2P2432](#) [CM30-25NNP-EC1](#) [CM18-08BNP-EW1](#) [CM18-08BPP-EW1](#) [CM18-12NNP-EC1](#) [CM18-12NPP-EW1](#) [CM30-16BPP-EC1](#) [CM30-25NPP-EW1](#) [E100-A2A22C05A](#) [GRL18-P1137](#) [KUP-0608-S](#) [KUP-0610-F](#) [MM12-60APS-ZUK](#) [DFS60B-S1PA10000](#) [GRL18-P1132](#) [WL150-P430](#) [WSE11-2N2430](#) [WSE4-3P2230](#) [WL2SG-2F3235](#) [IQ40-40NPPKC0K](#) [IQ40-20BPPKC0K](#) [IMB30-20NPPVC0S](#) [DBS36E-BBAK02048](#)