

# CONTROL PRODUCTS

## Assembled Control Stations

PCB  
TERMINAL  
BLOCKS

INTER-  
CONNECTION

FUSES &  
FUSE-  
HOLDERS

LEDs &  
INDICATORS

MINIATURE  
SWITCHES

LIMIT &  
SAFETY  
SWITCHES

CONTROL  
PRODUCTS

INTERFACE  
MODULES &  
SUPPORTS

RELAY  
BASES

ENCLOSURES

BATTERIES

TRANS-  
FORMERS

- Robust ABS control stations housing push-buttons, E-stops and selector switches
- Rated 600V, 10A max AC
- Conform to IEC 947-5-1 & EN 60947-5-1
- Other button options available to order
- Other size enclosures available to order
- CE approved

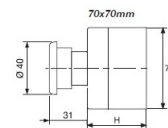
### SPECIFICATIONS

Materials	ABS	
Protection Class	IP65	
Rated Temperature	Operating	-25°C to +75°C
	Storage	-40°C to +80°C
	Box&lid	Grey RAL 7035
	Lid	Yellow RAL 1103
Contact Block and Switch		
Rated Voltage	600V	
Rated AC Current	24V	
	240V	
	400V	
Rated DC Current	24V	2.8A
	125V	0.55A
	250V	0.27A
Short circuit protection	10A	
Impulse Withstand	6KV	
Internal Resistance	<25mΩ	
Wire Acceptance	0.75-2.5mm <sup>2</sup>	
Body	Metal	Chromium plated
	Plastic	Fibreglass reinforced thermoplastic
Electrical Protection	Metal	Class I
	Plastic	Class II
Life	1x10 <sup>6</sup>	Operations

## E- stop Boxes Twist Release

PLASTIC BODIED	METAL BODIED	STYLE
CSC1-50	CSC1-50/M	Assembled E-stop box, 40mm red actuator 1NO & 1NC Contact, twist release
CSC1-50/BK	CSC1-50/BK/M	Assembled E-stop box, 40mm black actuator 1NO & 1NC Contact, twist release
CSC1-60	CSC1-60/M	Assembled E-stop box, 40mm red actuator. 1NO & 1NC Contact, key release
CSC1-60/BK	CSC1-60/BK/M	Assembled E-stop box, 40mm black actuator. 1NO & 1NC Contact, key release
CSC1-100	CSC1-100/M	Assembled E-stop box, 60mm red actuator. 1NO & 1NC Contact, twist release
CSC1-100/BK	CSC1-100/BK/M	Assembled E-stop box, 60mm black actuator. 1NO & 1NC Contact, twist release

CSC1-50



CSC1-60

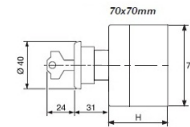


# CONTROL PRODUCTS

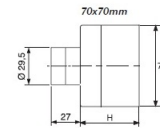
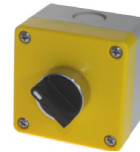
## Selector Switch Box

PLASTIC BODIED	METAL BODIED	POSITIONS	STYLE
CSC1-70/P	CSC1-70	2	Assembled Key selector box. 1NO Contact, Maintained left & right
CSC1-70-2/P	CSC1-70-2	2	Assembled Key selector box.. 1NO & 1NC, Return left
CSC1-70-3/P	CSC1-70-3	3	Assembled Key selector box.. 1NO & 1NC Contact, Maintained left, right & centre
CSC1-70-4/P	CSC1-70-4	3	Assembled Key selector box. 1NO & 1NC, Return to centre from left & right
CSC1-70-5/P	CSC1-70-5	3	Assembled Key selector box. 1NO & 1NC, Return to centre from left, maintained right
CSC1-70-6/P	CSC1-70-6	3	Assembled Key selector box. 1NO & 1NC, Return to centre from right, maintained left
CSC1-80/P	CSC1-80	2	Assembled selector box. 1NO & 1NC, Maintained left & right
CSC1-80-2/P	CSC1-80-2	2	Assembled selector box. 1NO & 1NC, Return left
CSC1-80-3/P	CSC1-80-3	3	Assembled selector box. 1NO & 1NC, Maintained left, right & centre
CSC1-80-4/P	CSC1-80-4	3	Assembled selector box. 1NO & 1NC, Return to centre from left & right
CSC1-80-5/P	CSC1-80-5	3	Assembled selector box. 1NO & 1NC, Return to centre from left, maintained right
CSC1-80-6/P	CSC1-80-6	3	Assembled selector box. 1NO & 1NC, Return to centre from right, maintained left

CSC1-70



CSC1-80



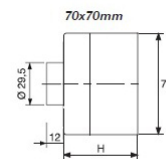
## Push Button Box

PLASTIC BODIED	METAL BODIED	STYLE
CSC1-10	CSC1-10/P	Assembled 1-position box with 30mm green pushbutton 1NO & 1NC Contact
CSC1-20	CSC1-20/P	Assembled 1-position box with 30mm red pushbutton 1NO & 1NC Contact
CSC2-10	CSC2-10/P	Assembled 2-position box with one 30mm green pushbutton and one 30mm red pushbutton. 1NO & 1NC Contact

CSC1-10



CSC2-10



PCB  
TERMINAL  
BLOCKS

INTER-  
CONNECTION

FUSES &  
FUSE-  
HOLDERS

LEDs &  
INDICATORS

MINIATURE  
SWITCHES

LIMIT &  
SAFETY  
SWITCHES

CONTROL  
PRODUCTS

INTERFACE  
MODULES &  
SUPPORTS

RELAY  
BASES

ENCLOSURES

BATTERIES

TRANS-  
FORMERS



+44 (0)1638 716101  
info@camdenboss.com  
www.camdenboss.com

We operate a constant improvement policy,  
our products are subject to change without notice.

**CAMDENBOSS**  
ELECTRONICS & ENCLOSURES

## X-ON Electronics

Largest Supplier of Electrical and Electronic Components

*Click to view similar products for [camden manufacturer](#):*

Other Similar products are found below :

[412689X](#) [CTBP92VE/12R](#) [CTBP9350/12](#) [IND515205-240-T/GRN](#) [IND515205-240-T/RD](#) [IND5032405-240-T/GRN](#) [CE10.00.EI](#)  
[C192SHAND](#) [CNMB/6ST/2](#) [CNMB/4ST/2](#) [CSACST004](#) [CTBP9200/9](#) [CIME/M/BE2250SS](#) [CHH64E1BL](#) [CIM/15W-DMFS](#) [CHHBAT2GY](#)  
[CFTBN/2](#) [CCB2S1/04](#) [CHDX6-221C](#) [CHDX8-224](#) [CHDASMP29](#) [CHDASMP34](#) [CHDX810DD](#) [CHDX811DD](#) [CCTTM40LR](#)  
[CTBP92VJ/5S](#) [CTBP92VJ/8R](#) [CTSN431/12/M](#) [CTSN433/12/M](#) [CUABOX006](#) [CE10.00.FM](#) [CBRPH-BLK](#) [BIM2003/13-WH/WH](#)  
[RX2008/S-5-WH](#) [CBARD-CAR](#) [CRDCG0007](#) [CNMB/4/KIT](#) [CTB5050/5](#) [CTBP92HE/11](#) [CTBP9358/10AO](#) [CHH66C2GY](#) [CHH456PBK](#)  
[CHH451ABK](#) [CIM/9W-DMFS](#) [CIM/25W-DMFS](#) [RTM5006/16-NC-BLK](#) [IND5032405-125-T/AMB](#) [CCB1S1/03](#) [CCD2S1/04](#) [CCE1S1/05](#)