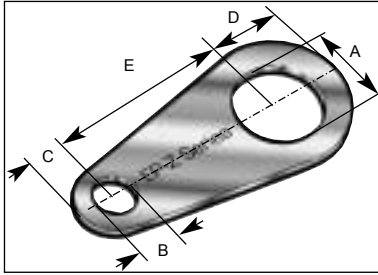


## Earth Tags

### Pear Shape



**EP-Z Series** Earth Tags are used to provide an earth-bond connection for an entry component.

**Available Sizes:** Metric, NPT, NPSM, ISO Pipe (BSP), PG, ET

**Materials:** Brass, 316 Stainless Steel, Aluminium,

**Plating:** Nickel, Zinc, other on application

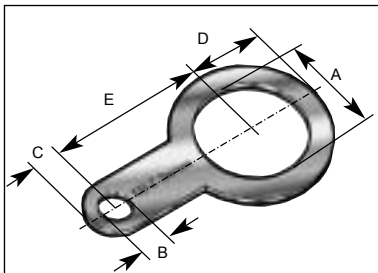
**CE Conformity:** Please refer to *European Directives & CE Marking*

**Part Number:** Please refer to *Part Numbering System*

### Dimensions of Metric and NPT Versions

| Size    | Thickness | B    | C    | D    | E     | Short Circuit Rating kA |
|---------|-----------|------|------|------|-------|-------------------------|
| A       |           |      |      |      |       |                         |
| M16     | 1.4       | 7.0  | 7.0  | 13.5 | 35.3  | 3.06                    |
| M20     | 1.4       | 7.0  | 7.0  | 13.5 | 35.3  | 3.06                    |
| M25     | 1.4       | 10.5 | 10.0 | 18.5 | 41.4  | 4.00                    |
| M32     | 1.4       | 12.0 | 13.0 | 23.3 | 53.9  | 5.40                    |
| M40     | 1.4       | 14.0 | 17.5 | 26.3 | 60.0  | 7.20                    |
| M50     | 1.4       | 14.0 | 17.5 | 32.1 | 76.1  | 10.40                   |
| M63     | 1.4       | 14.0 | 17.5 | 39.5 | 84.0  | 10.40                   |
| M75     | 1.4       | 14.0 | 17.5 | 44.0 | 94.5  | 10.40                   |
| M80     | 2.0       | 14.0 | 24.0 | 62.5 | 95.3  | 10.40                   |
| M85     | 2.0       | 14.0 | 24.0 | 62.5 | 95.3  | 10.40                   |
| M90     | 2.0       | 14.0 | 24.0 | 62.5 | 95.3  | 10.40                   |
| M100    | 2.0       | 14.0 | 24.0 | 62.5 | 103.5 | 10.40                   |
| ½" NPT  | 1.4       | 7.0  | 7.0  | 15.0 | 34.9  | 3.06                    |
| ¾" NPT  | 1.4       | 10.5 | 10.5 | 18.3 | 41.4  | 4.00                    |
| 1" NPT  | 1.4       | 12.0 | 12.0 | 13.1 | 22.9  | 5.40                    |
| 1¼" NPT | 1.4       | 14.0 | 17.5 | 26.7 | 63.5  | 7.20                    |
| 1½" NPT | 1.4       | 14.0 | 17.5 | 32.1 | 76.1  | 10.40                   |
| 2" NPT  | 1.4       | 14.0 | 17.5 | 39.6 | 84.0  | 10.40                   |
| 2½" NPT | 1.4       | 14.0 | 17.5 | 44.1 | 95.3  | 10.40                   |
| 3" NPT  | 2.0       | 14.0 | 23.7 | 62.5 | 103.5 | 10.40                   |

### Banjo Shape



**EB-Z Series** Earth Tags are used to provide an earth-bond connection for an entry component.

**Available Sizes:** Metric, NPT, NPSM, ISO Pipe (BSP), PG, ET

**Materials:** Brass, 316 Stainless Steel, Aluminium,

**Plating:** Nickel, Zinc, other on application

**CE Conformity:** Please refer to *European Directives & CE Marking*

**Part Number:** Please refer to *Part Numbering System*

### Dimensions of Metric and NPT Versions

| Size | Thickness | B    | C    | D    | E    | Short Circuit Rating kA |
|------|-----------|------|------|------|------|-------------------------|
| A    |           |      |      |      |      |                         |
| M16  | 1.4       | 6.7  | 6.5  | 13.0 | 31.4 | 3.06                    |
| M20  | 1.4       | 6.7  | 6.5  | 14.3 | 33.3 | 3.06                    |
| M25  | 1.4       | 6.7  | 6.5  | 17.5 | 36.4 | 4.00                    |
| M32  | 1.4       | 12.0 | 11.2 | 22.3 | 41.1 | 5.40                    |
| M40  | 1.4       | 13.5 | 16.2 | 25.5 | 41.7 | 7.20                    |
| M50  | 1.4       | 13.5 | 20.8 | 32.5 | 58.1 | 10.40                   |
| M63  | 1.4       | 13.5 | 20.8 | 41.3 | 66.7 | 10.40                   |
| M75  | 1.4       | 13.5 | 20.8 | 47.6 | 73.1 | 10.40                   |

## **X-ON Electronics**

Largest Supplier of Electrical and Electronic Components

*Click to view similar products for [redapt manufacturer](#):*

Other Similar products are found below :

[RDU100504](#) [RDU100604](#) [IPWSHRRFM16](#) [P/S.ETAGM16](#) [ADU100429](#) [SW-Z-6-0-00-04](#) [DOME HD PLUGM20](#) [RDU103004](#)  
[ADU102904](#) [SW-Z-6-0-00-03](#) [IPWSHRRFM20](#) [IPWSHRRFM25](#)