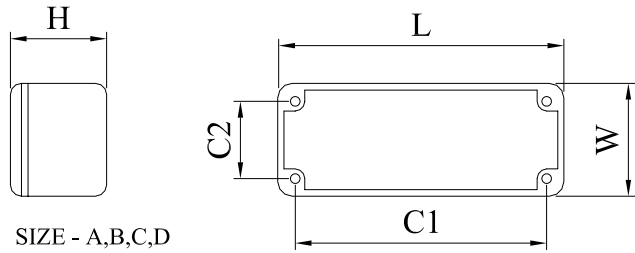
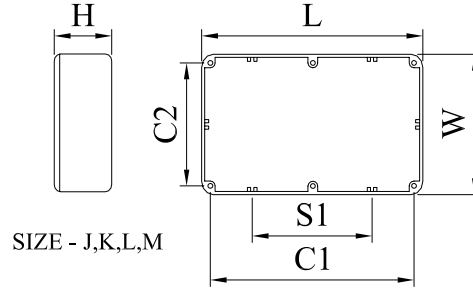


A range of diecast boxes in various sizes, manufactured in a robust aluminium alloy. These lightweight enclosures provide excellent screening against EMI/RFI and are therefore ideal housing for electronic components and circuits. The close fitting lid is secured using countersunk screws. The box also incorporates integral PCB guides, and comes in a plain finish. The box is fitted with a self-adhesive rubber seal, providing IP66 rating.

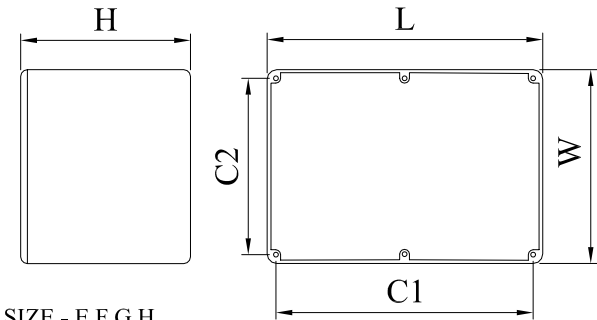
Material :Aluminium Alloy LM24
 Seal :Neoprene
 Closed cell, black
 Max Temp 200°C
 Screw Data
 Screw :Stainless Steel M3.5x12
 Taptite PZ2
 Torque : 3Nm
 Hole :Ø3.2mm x 13mm
 Apply screw by electric screwdriver



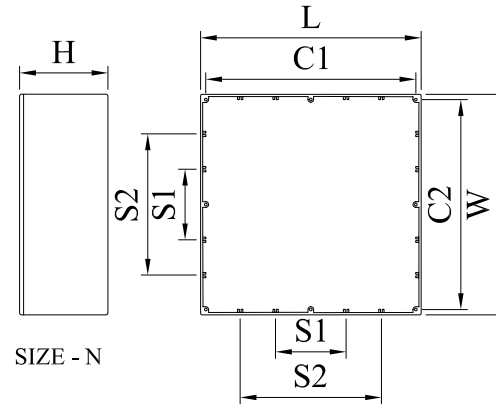
SIZE - A,B,C,D



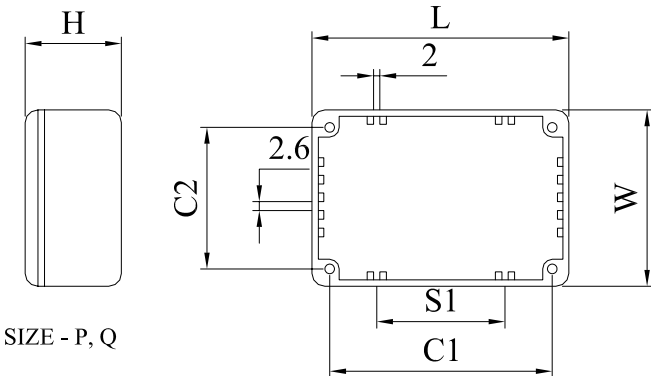
SIZE - J,K,L,M



SIZE - E,F,G,H



SIZE - N



SIZE - P, Q

TAPER 1.5° PER SIDE

Part No	Size	L	W	H	C1	C2	S1	S2	Wall Thickness	Taper
460-0010	A	88.9	34.9	30.5	79.4	25.4			1.5mm	Lid to Base
460-0020	B	114.5	64	30.5	104.6	54.1			1.5mm	Base to Lid
460-0030	C	115.7	90.5	55.9	104.6	79.4			1.5mm	Base to Lid
460-0040	D	115.3	64.5	55.9	103.4	52.5			2.0mm	Base to Lid
460-0050	E	171.5	120.6	55.9	160.5	109.6			2.0mm	Lid to Base
460-0060	F	171.5	120.6	106.7	160.5	109.6			2.0mm	Lid to Base
460-0070	G	222.3	146	56	211.5	135.3			2.0mm	Lid to Base
460-0080	H	222.3	146	106.7	211.5	135.3			2.0mm	Lid to Base
460-0090	J	275	175	66	264	164	132		2.0mm	Lid to Base
460-0100	K	139.7	101.6	77	128.7	90.6	64.4		2.0mm	Lid to Base
460-0110	L	165	127	77	154.1	116	77		2.0mm	Lid to Base
460-0120	M	120	100	36	108.3	88.2	50		2.0mm	Lid to Base
460-0130	N	250	250	101	238	238	80	160	2.5mm	Lid to Base
460-0140	P	80	55	26	70.5	45.5	40		1.5mm	Lid to Base
460-0150	Q	60	55	31	50.5	45.5	30		1.5mm	Lid to Base

DrgNo 460 SERIES

TITLE SEALED DIECAST BOX

ALL DIMENSIONS IN MM
 ANGLES IN DECIMAL DEGREES



ISSUE 5

GENERAL SPECIFICATION
 FOR 460 SERIES

CUSTOMER

FILTER REF

Aprvd Date 10/06/04

Aprvd By MC

Drwn by BS

Scale: NTS

Sheet 1 / 1



X-ON Electronics

Largest Supplier of Electrical and Electronic Components

Click to view similar products for [Enclosures, Boxes, & Cases](#) category:

Click to view products by [Deltron](#) manufacturer:

Other Similar products are found below :

[CR-425 PAINTED](#) [585-R-WH-PK](#) [M-10-PLATED](#) [60221-01](#) [60566-01-000](#) [HPL-9VB BATT DOOR](#) [M-16-LID-PLATED](#) [M18-PLTD](#) [M-21-LID-PLATED](#) [M-21-PLATED](#) [M-23-PLATED](#) [CU-281-MB](#) [6711GSKT](#) [71884-29-028](#) [LH45-100 Black](#) [7200B](#) [72868-510-000](#) [CNS-0000 Black](#) [72883-510-000](#) [CNS-0101 Black](#) [72906-510-000](#) [CNS-0407 Black](#) [73091-510-000](#) [CNM-0000-BLACK Kit](#) [73092-510-000](#) [CNM-0101 Black](#) [73108-510-000](#) [CNL-0303 Black](#) [73395-510-039](#) [CNS-0006 Bone](#) [74257-510-000](#) [CNL-0004](#) [MDC-1183-PLAIN-ALUM](#) [MDC-1183-PTD](#) [MDC-13104-PLAIN-ALUM](#) [MDC-211 - PAINTED IVORY/BEIGE](#) [MDC-321-PTD](#) [MDC-432-PLAIN-ALUM](#) [MDC-973-PTD](#) [76](#) [77153-01-028](#) [FLX6030](#) [83535-01-508](#) [PS-11296-G](#) [PS-11298-B](#) [116-508](#) [120-407](#) [120-412](#) [120-909](#) [120-455](#) [R272-100-000](#) [120-910](#) [R501-001-010](#) [R508-080-000](#) [R508-160-000](#) [R530-120-000](#) [R530-122-000](#) [R530-200-000](#) [R531-160-000](#) [R531-200-000](#) [R582-080-100](#)