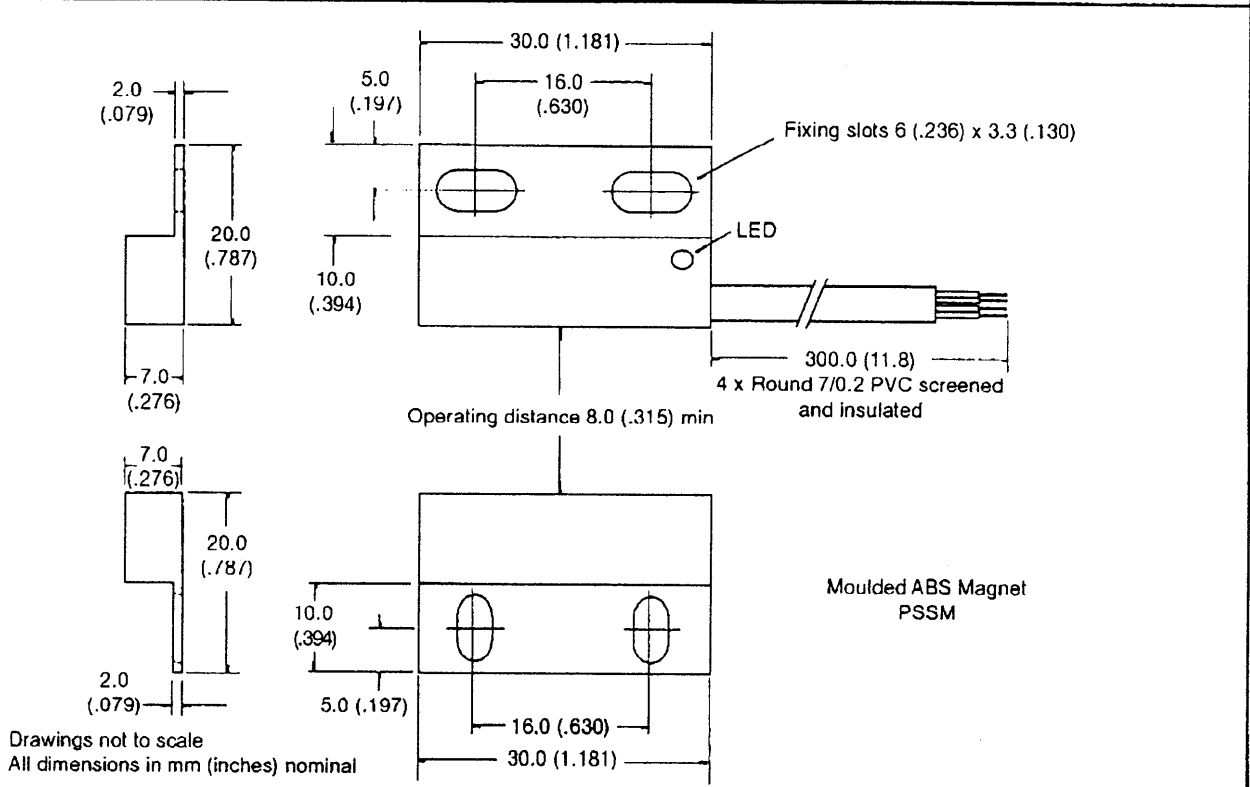


723-0412

FORM AE043 ISS1

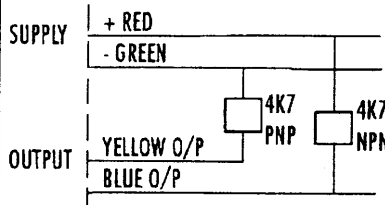
Comus Group of Companies

PRODUCT DATA SHEET



SPECIFICATION

SUPPLY VOLTAGE	Max. Vdc	10 - 20
ON CURRENT	Max. mA	25
OUTPUT TYPE		Open Collector
OUTPUT CURRENT	Max. mA	250
OUTPUT LOADING		4.7K
PROXIMITY OPERATION		See Below
OPERATING DISTANCE	Min. mm	8
OPERATING TEMPERATURE	Deg. °C	-30° + 70°
STORAGE TEMPERATURE	Deg. °C	-30° + 75°
CASE MATERIAL		ABS



Red = +v,
Green = 0V
Blue = NPN Output (4.7k ohms to +V)
Yellow = PNP Output (4.7k ohms to 0V)

- PNP + NPN Output
- Normally Open Contact
- Magnet Activated Bounce Free Operation
- LED indication

NOTE: When power is applied the red indication LED will glow dimly to indicate power is at the device. When a magnet is present in on target the LED will illuminate at full brightness.

RECTANGULAR MAGNETIC PROXIMITY SWITCHES

**PART NUMBER
PSS25S/30**

Rev. No.	Revision Note	Date	Signature
2	Web Site 1999	1-9-99	RG

The Comus Group of Companies consist of:
Assemtech Europe Limited
E. Bachem GmbH
Comus International
W. Gunther GmbH
Gunther Belgium
Gunther France
S.T.G.

X-ON Electronics

Largest Supplier of Electrical and Electronic Components

Click to view similar products for [Proximity Sensors](#) category:

Click to view products by [Comus](#) manufacturer:

Other Similar products are found below :

[01.001.5653.1](#) [70.340.1028.0](#) [70.360.2428.0](#) [70.364.4828.0](#) [70.810.1053.0](#) [72.360.1628.0](#) [73.363.6428.0](#) [9221350022](#) [980659-1](#) [QT-12](#)
[E2EX10D1NN](#) [E2E-X14MD1-G](#) [E2E-X2D1-G](#) [E2EX2ME2N](#) [E2E-X3D1-N](#) [10M](#) [E2E-X4MD1-G](#) [E2FMX1R5D12M](#) [E2K-F10MC1](#) [5M](#)
[EI1204TBOSL-6](#) [EI5515NPAP](#) [BSA-08-25-08](#) [IC08ANC15PO-K](#) [IMM2582C](#) [25.161.3253.0](#) [25.332.0653.1](#) [25.352.0653.0](#) [25.352.0753.0](#)
[25.523.3253.0](#) [9151710023](#) [922FS1.5C-A4P-Z774](#) [SC606ABV0S30](#) [SM952A126100LE](#) [A1220EUA-T](#) [F3S-A162-U](#) [CL18](#) [QT-08L](#)
[34.110.0010.0](#) [TL-C2MF1-M3-E4](#) [IA08BLF15NOM5](#) [IA08BSF15NOM5](#) [IA12ASF04DOM1](#) [IMM32188C](#) [IS2](#) [IS31SE5000-UTLS2-TR](#)
[34.110.0021.0](#) [34.110.0022.0](#) [CA150-120VACDC](#) [VM18VA3000Q](#) [XS508BSCBL2](#) [XS512BLNAM12](#)