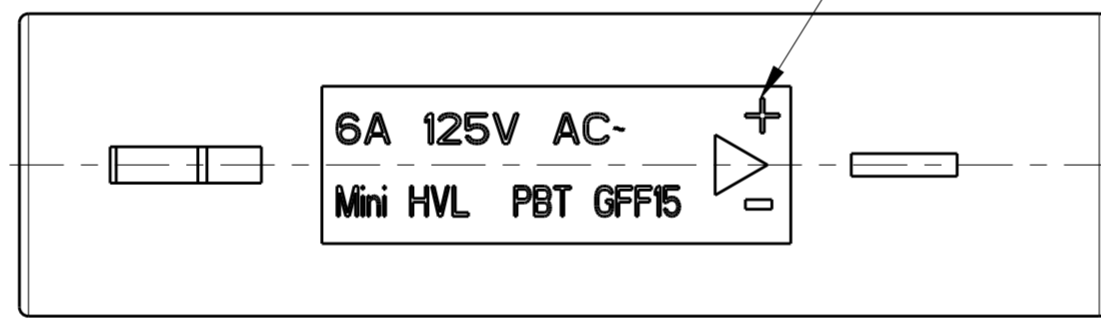
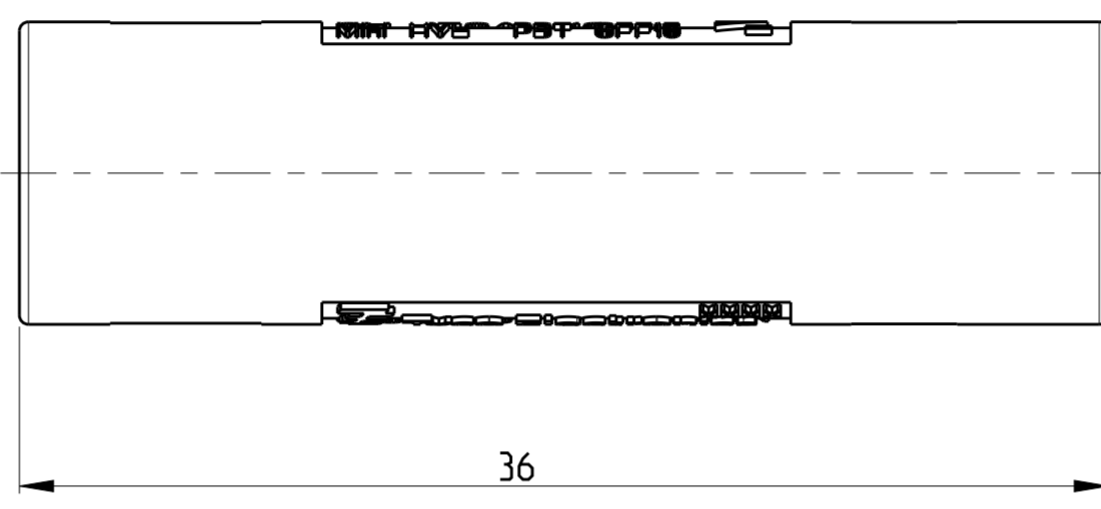
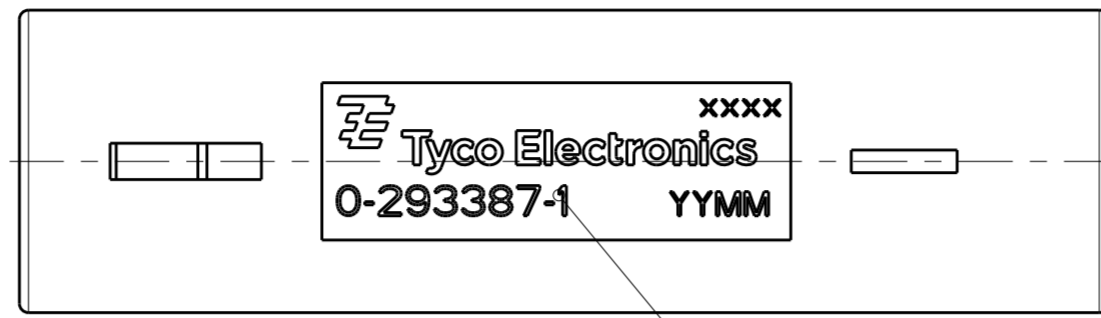
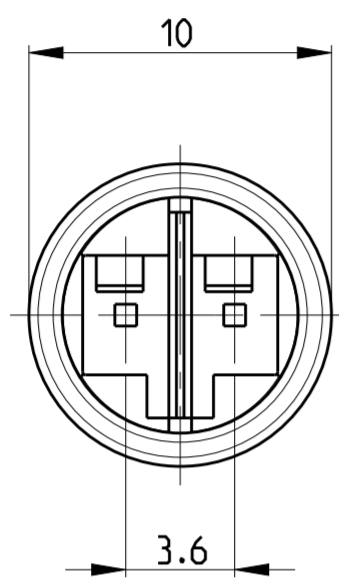


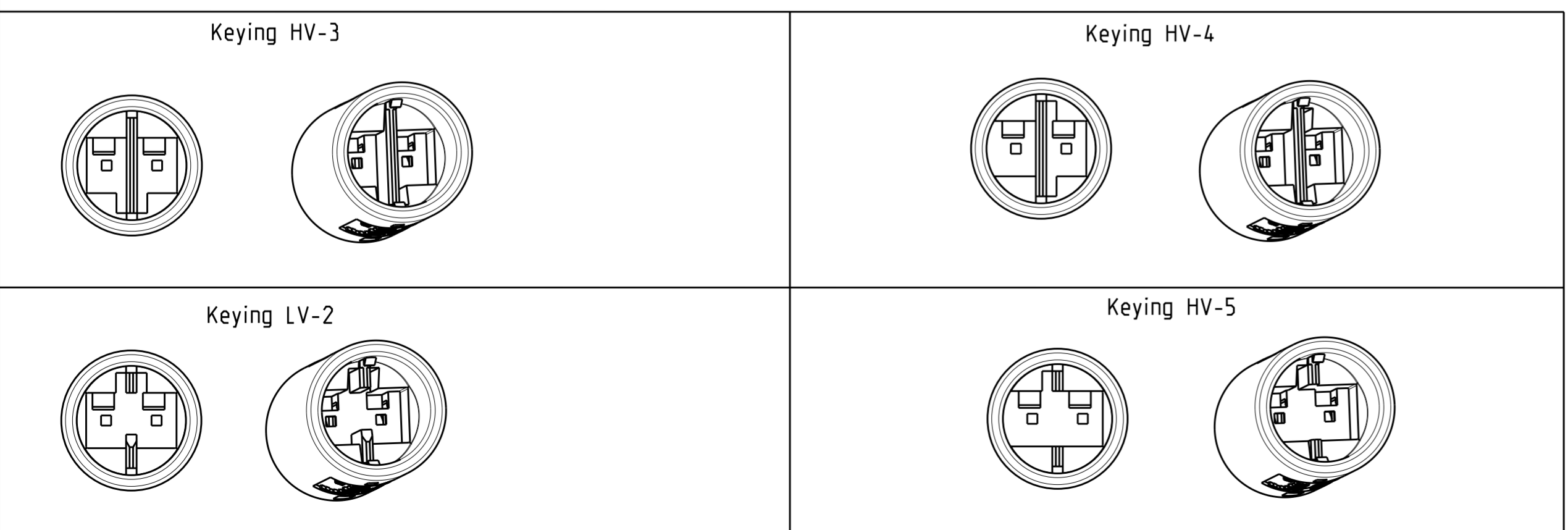
THIS DRAWING IS UNPUBLISHED. RELEASED FOR PUBLICATION 20
 © COPYRIGHT 20 BY - ALL RIGHTS RESERVED.

LOC	DIST	REVISIONS					
		P	LTR	DESCRIPTION	DATE	DWN	APVD
		B1		REVISED PER ECR-13-003447	11MAR2013	RS	DD
		E		REVISED PER ECR-16-005692	02JUN2016	RS	JL
		F		REVISED PER ECR-16-017348	24FEB2017	RK	JL



- Remarks:
1. cavities designed for MQS pin contact PN 1740335-x
 2. Counterpart is Plug PN 293388-x
- △3 Polarity marking +/- permanent / usable for DC version
 - △4 PN specific marking
 - △5 PBT 15GF, UL 94 V0 WHITE COLOR

P/N 293387-1 AS SHOWN



Note	Keying	COLOR/MATERIAL	REMARKS	Marking	PN
	LV-2	WHITE △5	LOW-VOLTAGE 125VAC/VDC	7A/125VAC/VDC =	293387-4
	HV-5	WHITE △5	HIGH-VOLTAGE 125V AC	6A/125V AC ~	293387-3
	HV-4	WHITE △5	HIGH-VOLTAGE 125V AC	6A/125V AC ~	293387-2
	HV-3	WHITE △5	HIGH-VOLTAGE 125V AC	6A/125V AC ~	293387-1

THIS DRAWING IS A CONTROLLED DOCUMENT.

DIMENSIONS: mm	TOLERANCES UNLESS OTHERWISE SPECIFIED:	DWN A. Vecchia 12FEB2009	 TE Connectivity
		CHK G. Turco 12FEB2009	
		APVD G. Turco 12FEB2009	
MATERIAL	FINISH	PRODUCT SPEC	NAME
△5		APPLICATION SPEC	NECTOR S Lighting System Outlet
		WEIGHT 2.2g	SIZE CAGE CODE DRAWING NO RESTRICTED TO
		CUSTOMER DRAWING	A2 00779 C-293387 -
		SCALE 3:1	SHEET 1 OF 1 REV F

X-ON Electronics

Largest Supplier of Electrical and Electronic Components

Click to view similar products for [Lighting Connectors](#) category:

Click to view products by [TE Connectivity](#) manufacturer:

Other Similar products are found below :

[21061-9](#) [293300-7](#) [2106117-2](#) [293660-5](#) [293700-2](#) [CNX_H03_NTP](#) [30-9767-BU](#) [3-21030-1](#) [ZCH-110-RGB-I](#) [503471-0290](#) [ES5P09K4F2](#)
[CNXH02NTP](#) [ZCH-110-RGB-J](#) [217-0716-200](#) [192992-0057](#) [1954563-1](#) [217-3030-000](#) [217-3032-000](#) [237-0734-003](#) [DTS24W25-20PN-LC](#)
[1-2213614-2](#) [2834049-3](#) [ES9S002SZZ](#) [2834049-2](#) [2-2834067-3](#) [1-293657-2](#) [2834049-1](#) [293699-2](#) [293701-3](#) [1-2213614-3](#) [2834036-1](#)
[2834037-1](#) [2213614-3](#) [2307526-2](#) [2-2106124-3](#) [2-2834068-3](#) [FLS2SC4001BP](#) [FLSC80352000](#) [FLSC80354000](#) [FLSC80353000](#) [FLSSB8002](#)
[FLSSB8001](#) [FLSC80351000](#) [FLSC80355000](#) [FLSSB4001](#) [FLSC80504000](#) [FLSC80502000](#) [FLSC80501000](#) [FLSSR4001](#) [FLSC80503000](#)