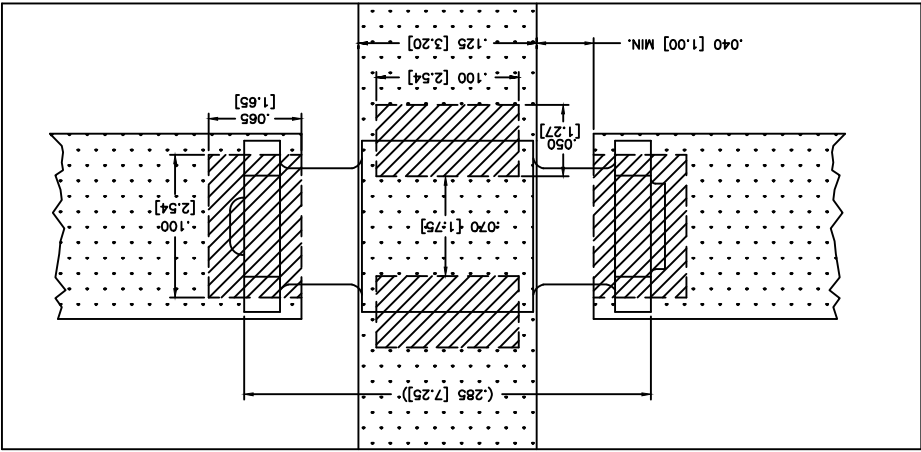
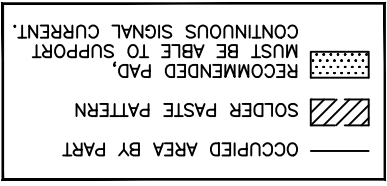


PART NUMBER	CURRENT RATING
PSM4F-103Z-02x	* 2A
PSM4F-103Z-05x	* 5A
PSM4F-103Z-10x	* 10A
PSM4F-103Z-15x	* 15A
PSM4F-103Z-20x	* 20A

* PACKAGING OPTIONS:
 x = B, BULK PACKAGE (1000 PCS MAX.)
 x = T0, TAPE & REEL, 7" (500 PCS)
 x = T2, TAPE & REEL, 13" (2000 PCS)

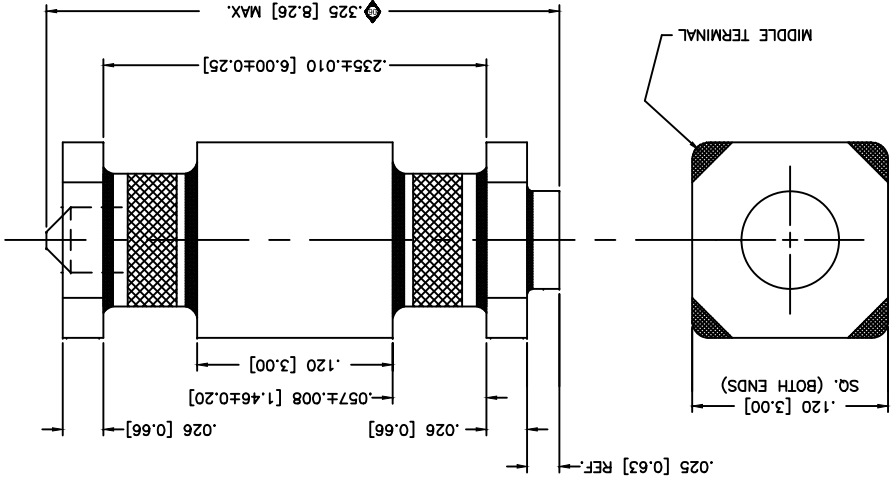
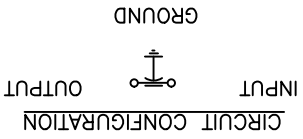
TYPICAL INSERTION LOSS @ 25°C	
1 MHZ	30 MHZ
10 MHZ	50 MHZ
30 MHZ	100 MHZ
100 MHZ	300 MHZ
300 MHZ	500 MHZ
500 MHZ	1 GHZ
PSM4F-103Z-02x	33
PSM4F-103Z-05x	33
PSM4F-103Z-10x	33
PSM4F-103Z-15x	33
PSM4F-103Z-20x	33

MOUNTING INFORMATION



MARKING:
 PART: NONE
 PACKAGE: PART NO.
 SCI DATE CODE
 QTY.

- NOTES:**
- 1) CAPACITANCE: 10,000pF
 - 2) CAP TOLERANCE: +80%/-20%
 - 3) INSULATION RESISTANCE: 25°C 1GΩH MIN.
 - 4) 100 VDC RATED: -55°C to +125°C
 - 5) DIELECTRIC WITHSTANDING VOLTAGE: 300 VDC
 - 6) FINISH: SILVER
 - 7) REFLOW TEMPERATURE LIMIT: +235°C FOR 5 SECONDS.



UNLESS OTHERWISE SPECIFIED		DIMENSIONS ARE IN INCHES		FRACTIONS 1/64		DECIMALS ±0.0025		DECIMALS ±0.00127		ANGLES ±0° 30'		DATE 5-24-12		APPL DEVICE		SHEET 1 OF 1		
REV. NO.	06	CHANGE NOTICE	04	05	05	04	04	04	04	04	04	04	04	04	04	04	04	04
REDRAWN																		
EN 3589																		
CN 63966-ENG																		
CN 63227-ENG																		
THIRD ANGLE PROJECTION																		
DD NOT SCALE																		
CODE IDENT. NO.																		
0LSP2																		
TOLERANCES UNLESS OTHERWISE SPECIFIED		DIMENSIONS ARE IN INCHES		FRACTIONS 1/64		DECIMALS ±0.0025		DECIMALS ±0.00127		ANGLES ±0° 30'		DATE 5-24-12		APPL DEVICE		SHEET 1 OF 1		
PSM4F-103Z-XX		SURFACE MOUNT FILTER		Description		Dm. KAUFFMAN		Description		FAIRVIEW PENNSYLVANIA		ap technologies corp.		Description		PSM4F-103Z-XX		

Quality Products From The Specialists In Electro-Magnetic Compatibility

X-ON Electronics

Largest Supplier of Electrical and Electronic Components

Click to view similar products for [EMI Network Filter](#) category:

Click to view products by [Spectrum](#) manufacturer:

Other Similar products are found below :

[NFL18ST507H1A3D](#) [SBSGC0500224MXB](#) [SBSPP0250104MXT](#) [SBSPP0250154MXT](#) [SBSPP0500473MXT](#) [SBSPP1000102MXT](#)
[SBSPP1000153MXB](#) [SBSPP1000153MXT](#) [SBSPP1000220MCT](#) [SBSPP1000222MXT](#) [SBSPP1000332MXT](#) [SBSPP1000470MCT](#)
[SBSPP1000471MCT](#) [SBSPP1000472MXT](#) [SNZF220DFT1G](#) [SBSPP0250154MXB](#) [SBSPP0500473MXB](#) [SBSPP0500683MXT](#)
[SBSPP1000101MCT](#) [SBSPP1000103MXT](#) [SBSPP1000220MCB](#) [SBSPP1000221MCT](#) [PSM1402Z10T0](#) [SBSMP0500474MXT](#)
[SBSMP5000473MXB](#) [SSM1-402Z-10B](#) [CM6400A](#) [74273002](#) [BNX026H01L](#) [BNX029-01L](#) [NFE31PT220R1E9L](#) [NFE61HT681D2A9L](#)
[NFE61PT681B1H9L](#) [NFL18SP207X1A3D](#) [NFL18SP507X1A3D](#) [NFL18ST506H1A3D](#) [NFL21SP307X1C3D](#) [NFL21SP506X1C3D](#)
[NFL21SP706X1C3D](#) [NFW31SP207X1E4L](#) [BNX027H01L](#) [BNX028-01L](#) [NFE61HT101Z2A9L](#) [NFE61HT181C2A9L](#) [NFE61HT361C2A9L](#)
[NFL18ST307X1C3D](#) [NFL18ST706H1A3D](#) [NFL21SP107X1C3D](#) [NFL21SP507X1C3D](#) [4420P-601-270/500L](#)