

## TECHNICAL CHARACTERISTICS

### SPECIFICATION

#### >Contact Rating:

Switching: 25mA, 24VDC  
Non-Switching: 100mA, 50VDC

#### >Contact Resistance:

Initial: 50mOHM max.  
After Life Test: 100mOHM max.

#### >Insulation Resistance:

min. 100MOHM at 500VDC

#### >Dielectric Strength:

500VAC for 1 minute

#### >Operating Force:

1000g max.

#### >Mechanical Life:

min. 5000 cycles

#### >Electrical Life:

2000 cycles / 25mA, 24VDC

#### >Flat Actuator Type

### MATERIAL

>Cover: PBT UL 94V-0, color Red  
>Base: PA 66 UL 94V-0, color Black  
>Actuator: PA 66 UL 94V-0, color White  
>Support: PA 66 UL 94V-0, color Black  
>Contact: Gold Plated  
>Terminal: Tin Plated

### SOLDERING INFORMATION

#### >Terminal in THT version

>Wave soldering 260°C 10sec. max

>Hand soldering with 30W or under at 350°C for 3 sec. max or at 270°C for 5 sec max

>Keep in "off" position during soldering

>Ultrasonic cleaning not re-commended

>Any inflow of Flux into the switch may influence the contact function

### ENVIRONMENTAL

>Storage condition: -40°C ~ +85°C

>Operation condition: -40°C ~ +85°C

>Compliance: Lead Free, ROHS, Reach

### PACKAGING INFORMATION

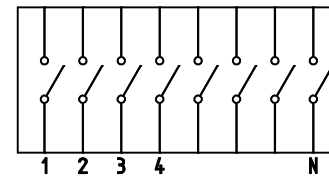
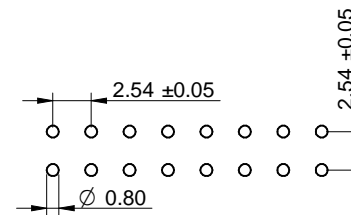
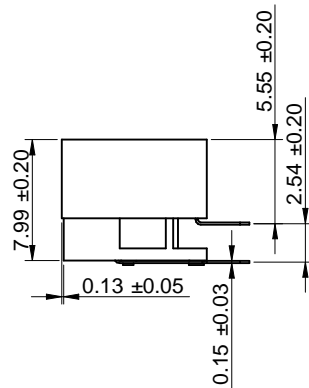
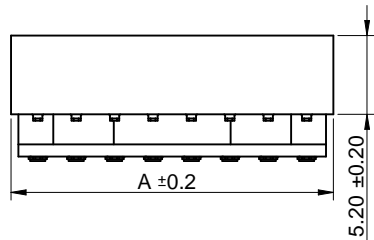
>Tube packaging only

>On delivery in "off" position

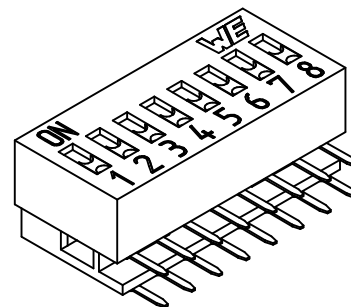
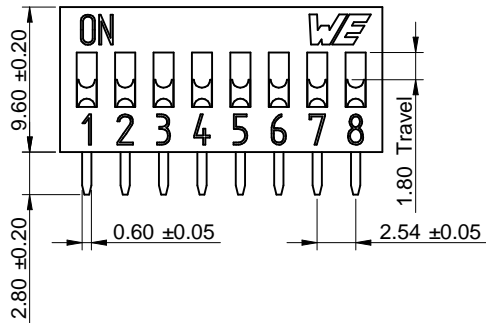
### DIMENSION

No.Of Pole	2	3	4	5	6	7
Dim. A (mm)	6.08	8.62	11.16	13.70	16.24	18.78
No.Of Pole	8	9	10	12		
Dim. A (mm)	21.32	23.86	26.40	31.48		

Scale - 2:1



Wiring Diagram



This electronic component is designed and developed with the intention for use in general electronics equipments.

Before incorporating the components into any equipments in the field such as aerospace, aviation, nuclear control, submarine, transportation, (automotive control, train control, ship control), transportation signal, disaster prevention, medical, public information network etc. where higher safety and reliability are especially required or if there is possibility of direct damage or injury to human body, Würth Elektronik must be asked for a written approval.

In addition, even electronic component in general electronic equipments, when used in electrical circuits that require high safety, reliability functions or performance, the sufficient reliability evaluation-check for the safety must be performed before by the user before usage.

		Projection		GENERAL TOLERANCE .x = +/- 0,2 .xx = +/- 0,15		Basic material	
				Date	Name	DESCRIPTION	
				Drawn	09-02-24	Jelisarow	WS-DITU, right angle, THT version
				Checked	09-02-24	Hsu	flat Actuator without top tape sealed
						Scale	2:1
						Position	
						SIZE	
b	revised MatchCode	14-07-23	AL	Würth Elektronik RDX		Drawing.- No. <b>4182171709xx</b>	
a	warning text	11-10-26	WJ			A4	
REV	FILE	DATE	BY	EDV NO	4182171709xx.dft	System :Solid Edge V20	

## X-ON Electronics

Largest Supplier of Electrical and Electronic Components

*Click to view similar products for [DIP Switches/SIP Switches](#) category:*

*Click to view products by [Wurth](#) manufacturer:*

Other Similar products are found below :

[78M03S](#) [79B10T](#) [8136-475G4T](#) [G7G-1A2-CB-DC12](#) [A7SS-M](#) [DBP 2110](#) [DBP 2112](#) [DBS1008](#) [DHN02FTVTR](#) [DHN10T](#) [DHS108](#)  
[DPL08TN](#) [DRD16CSE04](#) [DRR4010](#) [DRR60016](#) [DRS4016](#) [BD06E](#) [1825008-1](#) [1825444-1](#) [25.350.0653.0](#) [LA2-DC12](#) [SBS 5004 TG](#)  
[SDA10H1BDA](#) [97R06ST](#) [A2C-2A5](#) [1825444-7](#) [ADE08SA04](#) [ADE12S04](#) [2161391-1](#) [2-1825058-8](#) [CCVA 2.5/ 4-G-5.08](#) [P26THRR32](#)  
[25.330.0653.1](#) [25.352.0353.0](#) [MDG305ST](#) [IKN0600000](#) [IKN0800000](#) [LA2-002-DC24](#) [DBP2008](#) [DBS1003](#) [DBS2008](#) [438872000](#)  
[DRD10CRAE04](#) [DRS1604](#) [DSR02T](#) [DSS 208 N](#) [5-1825033-1](#) [106-SDN06-EV](#) [1-1437507-6](#) [E2FMX2D1M1TGJ03M](#)  
[E3ZMCT81M1TJ03M](#)