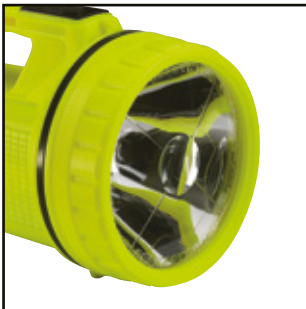




**SPECIFICATION**

- High power Krypton bulb
  - Beamaster Lens technology
  - Front mounted push button switch
  - Lantern floats upright in water
  - Industrial strength copolymer housing
  - HIVIS Yellow for added safety
  - Easy fit battery operation
  - Impact Resistant to 1M
  - Water Resistant
- 
- BATTERY: 1x6v PJ996 Lantern battery (Not Included)
  - SIZE: 210mm x 120mm
  - WEIGHT: 330g (With Battery)



> Beamaster Lens Technology



> Moulded Rubber Switch



> Easy Fit Battery Replacement



> Nylon Carry Strap

## **X-ON Electronics**

Largest Supplier of Electrical and Electronic Components

*Click to view similar products for [unilite](#) manufacturer:*

Other Similar products are found below :

[PS-HDL2](#) [ATEX-H2](#) [ATEX-PL1](#) [ATEX-RA2](#) [PS-P1](#) [HV-FL9R](#)