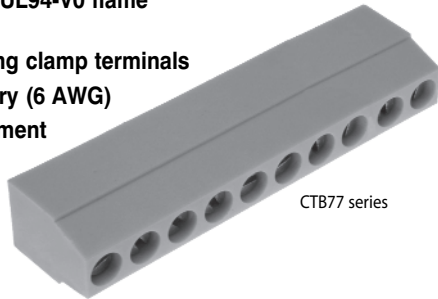


## 10.16mm pitch **Very High Power** Terminal block

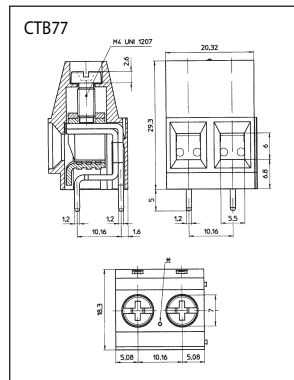
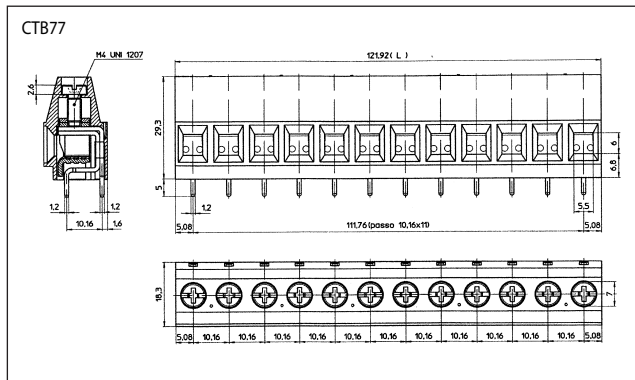
### Features

- 2 and 3 pole interlocking or solid block
- 2 & 3 pole double interlocking mechanism for increased strength
- Moulded in grey UL94-V0 flame retardant PA66
- Professional rising clamp terminals
- 10mm<sup>2</sup> cable entry (6 AWG)
- Guided pin alignment
- Captive screws



### Specification

Rating	57A/750V (UL 40A/300V), UL=40A, CUL=40A, IMQ=57A, VDE=57A,
Dielectric strength	≥ 3kV/60sec
Insulation resistance	≥ 5MΩ
Working temperature	-20°C to 110°C
Moulding	UL94-V0 flame retardant PA66
Pin	5μ tinned, nickel plated brass
Rising Clamp	7μ Zinc plated steel
Screw/torque	M4 steel, 7μ zinc colour passivated and tropicalised/1.2Nm
Recommended PCB hole size	ø1.5mm



Type No.	Poles	Length
CTB77VP/2	2	20.32
CTB77VP/3	3	30.48
CTB77VP/4	4	40.64
CTB77VP/5	5	50.8
CTB77VP/6	6	60.96
CTB77VP/7	7	71.12
CTB77VP/8	8	81.28
CTB77VP/9	9	91.44
CTB77VP/10	10	101.6
CTB77VP/11	11	111.76
CTB77VP/12	12	121.92

**PCB TERMINAL BLOCKS**  
**INTER-CONNECTION**  
**FUSES & FUSE-HOLDERS**  
**BATTERIES**  
**LED's**  
**MINIATURE SWITCHES**  
**INTERFACE MODULES & SUPPORTS**  
**ENCLOSURES**  
**IC & PLCC SOCKETS**  
**RELAY BASES**  
**CONTROL PRODUCTS**

## X-ON Electronics

Largest Supplier of Electrical and Electronic Components

*Click to view similar products for [camden manufacturer](#):*

Other Similar products are found below :

[412689X](#) [CTBP92VE/12R](#) [CTBP9350/12](#) [IND515205-240-T/GRN](#) [IND515205-240-T/RD](#) [IND5032405-240-T/GRN](#) [CE10.00.EI](#)  
[C192SHAND](#) [CNMB/6ST/2](#) [CNMB/4ST/2](#) [CSACST004](#) [CTBP9200/9](#) [CIME/M/BE2250SS](#) [CHH64E1BL](#) [CIM/15W-DMFS](#) [CHHBAT2GY](#)  
[CFTBN/2](#) [CCB2S1/04](#) [CHDX6-221C](#) [CHDX8-224](#) [CHDASMP29](#) [CHDASMP34](#) [CHDX810DD](#) [CHDX811DD](#) [CCTTM40LR](#)  
[CTBP92VJ/5S](#) [CTBP92VJ/8R](#) [CTSN431/12/M](#) [CTSN433/12/M](#) [CUABOX006](#) [CE10.00.FM](#) [CBRPH-BLK](#) [BIM2003/13-WH/WH](#)  
[RX2008/S-5-WH](#) [CBARD-CAR](#) [CRDCG0007](#) [CNMB/4/KIT](#) [CTB5050/5](#) [CTBP92HE/11](#) [CTBP9358/10AO](#) [CHH66C2GY](#) [CHH456PBK](#)  
[CHH451ABK](#) [CIM/9W-DMFS](#) [CIM/25W-DMFS](#) [RTM5006/16-NC-BLK](#) [IND5032405-125-T/AMB](#) [CCB1S1/03](#) [CCD2S1/04](#) [CCE1S1/05](#)