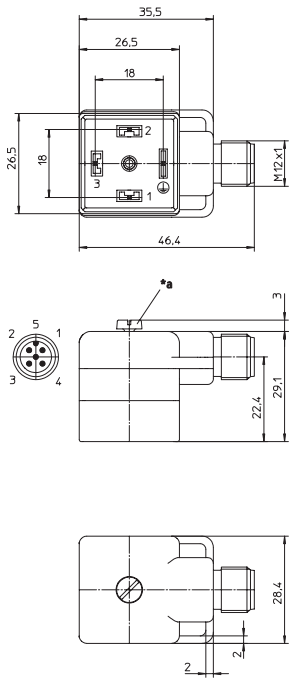


### VAD 3C-4-1

Steckverbinder für Druckschalter nach DIN EN 175301-803, Bauform A, LED Betriebs- und Funktionsanzeige, mit M12-Einbaustecker

Connector for pressure switches according to DIN EN 175301-803, form A, with LED operation and function indicator, with M12 male receptacle connector

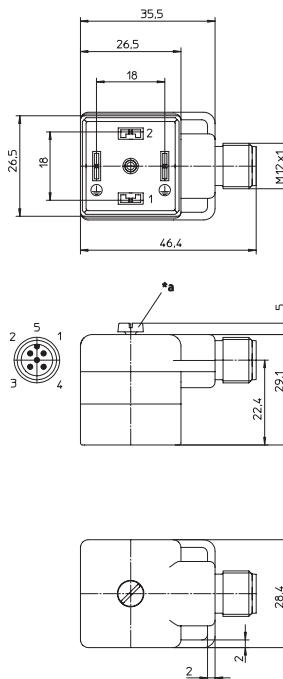


\*a M3-Schraube  
M3 screw

### VAD 1A...M12

Ventiladapter nach DIN EN 175301-803, Bauform A, mit LED-Funktionsanzeige, Schutzbeschaltung durch Varistor, Erdanschluss gebrückt, mit M12-Einbaustecker

Valve adaptor according to DIN EN 175301-803, form A, with LED function indicator, varistor voltage protection, connected protective earth, with M12 male receptacle connector

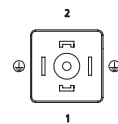
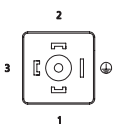


\*a M3-Schraube  
M3 screw

### Pinbelegung Pin assignment

VAD 3C-4-1-M12-5

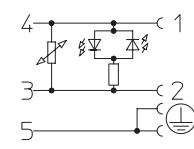
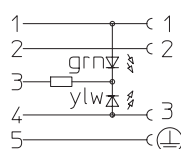
VAD 1A-1-3-M12-5



### Schaltbild Wiring diagram









VAD 3C-4-1-M12-5

VAD 1A-1-3-M12-5



<b>Technische Daten</b>	
<b>Umgebungstemperatur</b>	-25°C / +80°C
<b>Werkstoffe</b>	
Gehäuse / Griffkörper	VAD: TPU, selbstverlöschend M12: CuZn, vernickelt
Kontaktträger	VAD: PBT M12: PA
Kontakt	VAD: CuZn, unternickelt und verzinkt M12: CuZn, unternickelt und 0,8 µm vergoldet
<b>Mechanische Daten</b>	
Schutzart	IP 67 Nur im verschraubten Zustand mit den dazugehörigen Gegenstücken.
<b>Elektrische Daten</b>	
Durchgangswiderstand	≤ 5 mΩ
Nennstrom bei 40°C	4 A
Nennspannung	VAD 1A: 24 V VAD 3C: 24 V DC
Bemessungsspannung	32 V
Isolationswiderstand	> 10 <sup>9</sup> Ω
Verschmutzungsgrad	3
<b>Varistor-Kenndaten</b>	
Nennspannung	47 V bei 0,1 mA
typ. Begrenzungsspannung	110 V bei 5 A
max. Impulsenergie (Normimpuls 10/1000us)	0,9 Ws
max. Dauerverlustleistung	0,01 W
<b>Zubehör (inkl.)</b>	Schraube (montiert)

<b>Technical data</b>	
<b>Operating temperature range</b>	-25°C / +80°C
<b>Materials</b>	
Housing / Molded body	VAD: TPU, self-extinguishing M12: CuZn, nickel-plated
Insert	VAD: PBT M12: PA
Contact	VAD: CuZn, pre-nickel and tin-plated M12: CuZn, pre-nickel and 0.8 microns gold-plated
<b>Mechanical data</b>	
Degree of protection	IP 67 Only in locked position with its proper counterparts.
<b>Electrical data</b>	
Contact resistance	≤ 5 mΩ
Nominal current at 40°C	4 A
Nominal voltage	VAD 1A: 24 V VAD 3C: 24 V DC
Rated voltage	32 V
Insulation resistance	> 10 <sup>9</sup> Ω
Pollution degree	3
<b>Varistor data</b>	
Nominal voltage	47 V at 0.1 mA
typ. limiting voltage	110 V at 5 A
max. pulse energy (standard impulse 10/1000us)	0.9 Ws
max. continuous power loss	0.01 W
<b>Accessories (incl.)</b>	Screw (fitted)

Bestellbezeichnung Designation	Polzahl Poles	 
VAD 3C-4-1-M12-5	3 + 	 
VAD 1A-1-3-M12-5	2 + 	 
<b>Ausführung mit Supressordiode auf Anfrage erhältlich.</b>		<b>Version with suppressor diode available on request.</b>

## X-ON Electronics

Largest Supplier of Electrical and Electronic Components

*Click to view similar products for [lumberg](#) manufacturer:*

Other Similar products are found below :

[RK20-603/5M](#) [ASBSM 10/LED 3](#) [ASBS-R 8/LED 5-4](#) [ASBSV 8 5](#) [BTOR 1 SCHWARZ](#) [18315 0976 PMC 151](#) [KRE8](#) [SBS 4/LED 3](#) [SFV 80](#) [RK30/2M](#) [RKWT 4-07/5M](#) [ASBS-R 4 5-4](#) [ASBS-R 4/LED 5-4](#) [BTO 1 SCHWARZ](#) [BTO 1 V SCHWARZ](#) [BTOR 1 WEISS](#) [KB3](#) [KRES10](#) [KRESS8](#) [KS8](#) [KRM 07](#) [0103 03](#) [WKV 81](#) [RK 30-738/20F](#) [RKMV 4-225/10 M](#) [RKT 5-644/2M](#) [RKT 4-679/5M](#) [HZ30](#) [ASBS 2](#) [M12-S2326](#) [1614 16](#) [0985 706 100/10M](#) [RST 4-RKWT 4-602/1M](#) [WKV50](#) [RST 4-633/2M](#) [RST 4-RKWT 4-602/3M](#) [RS-TU](#) [WSV 30](#) [0986](#) [EMC 102](#) [0250 03](#) [RKWT 5-612/5M](#) [0980 ESL 393-121](#) [RST 5L-RKT 5L-949/5 M](#) [ASBM 6/LED 3-344/5 M](#) [RKT 4-646/2M](#) [RKHL 8/S 5,5](#) [0985 YM57530 100/20M](#) [0985 YM57530 500/1M](#) [RST 4-RKT 4-637/2M](#) [RKT 5L-949/5 M](#) [RST 3-RKMV 3-224/2 M](#)