

A range of plugs that are available in two pin styles; hollow or solid. The plug incorporates a unique 'T' slot design which allows the interconnection between non-standard sockets. A rigid acetal cap is offered in two colours, red or black.

- Ground contact with unique 'T' shape slots for maximum contact area.
- Internal cable clamp for secure cable connection.
- Maximum cable size 4.1mm.
- Two colours available, black or red.

Material

Centre contact :Brass, Silver plated

Ground contact :Brass, Nickel plated

Insulation :Noryl, SE1 UL94 V-1

Cable clamp :Brass, Silver plated

Spring :Brass, Nickel plated

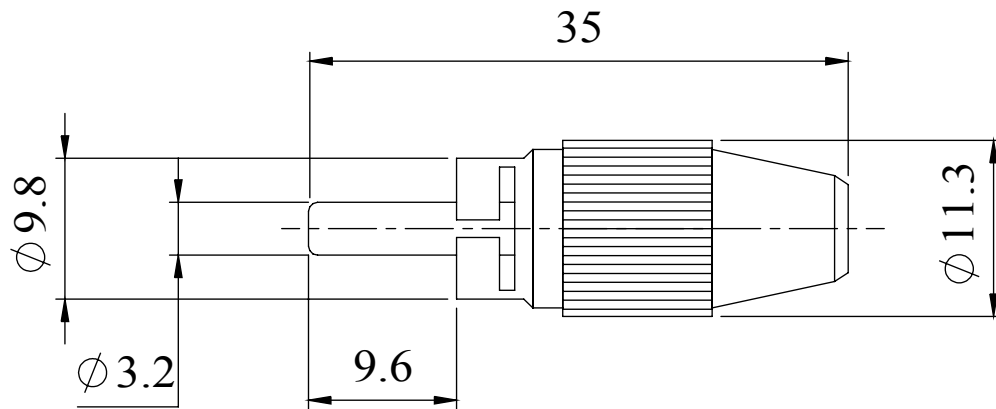
Body :Brass, Nickel plated

Cap :Acetal, UL 94 HB

Rating -
 Rated Current: 5A.
 Rated Voltage: 50V.

Insulation resistance :100M Ω at 500 Vdc

Dimensions



HOLLOW PIN	BLACK	RED
NICKEL	413-0100	413-0500
GOLD	414-0100	414-0500
SOLID PIN	BLACK	RED
NICKEL	415-0100	415-0500
GOLD	416-0100	416-0500

Deltron Part No	
413-000	414-0000
415-0000	416-0000

Tel No. +44(0)1724 273200 Website www.dem-uk.com



PROPRIETARY AND CONFIDENTIAL
 THE INFORMATION CONTAINED IN THIS DRAWING IS THE SOLE PROPERTY OF ALPHA 3 MANUFACTURING.
 ANY REPRODUCTION IN PART OR AS A WHOLE WITHOUT THE WRITTEN PERMISSION OF ALPHA 3 MANUFACTURING IS PROHIBITED.

DEM
 DEM Manufacturing, Deltron Emcon House
 Hargreaves Way, Sawcliffe Ind. Park,
 Scunthorpe, North Lincolnshire, DN15 8RF, UK

UNLESS OTHERWISE SPECIFIED:
 DIMENSIONS ARE IN MILLIMETRES
 LINEAR TOLERANCE:
NO DECIMAL PLACES $\pm 0.5\text{mm}$
1 DECIMAL PLACE $\pm 0.25\text{mm}$
2 DECIMAL PLACES $\pm 0.125\text{mm}$
ANGULAR TOLERANCE: $\pm 1^\circ$

FINISH STANDARD PHONO PLUG WITH INSULATED HOUSING
 IF IN DOUBT ASK
 DO NOT SCALE DRAWING

DEBURR AND BREAK SHARP EDGES

MATERIAL SEE NOTE

DRAWN BY SPB
 APPROVED BY WC
 THIRD ANGLE PROJECTION

SHEET 1 OF 1
 SCALE 1:1
 A4

TITLE GENERAL SPECIFICATION FOR 413-414-415-416
 DRAWING NO. 413-414-415-416
 ISSUE **05**
 Release

X-ON Electronics

Largest Supplier of Electrical and Electronic Components

Click to view similar products for [RF Connectors / Coaxial Connectors](#) category:

Click to view products by [Deltron](#) manufacturer:

Other Similar products are found below :

[R125315120](#) [8915-1511-000](#) [89674-0827](#) [5916-1103-603](#) [0106-001-000](#) [6-0001-3](#) [6001-7071-019](#) [6002-7051-003](#) [6002-7551-202](#) [6059674-1](#) [619550-1](#) [630059-000](#) [M39012/25-0021](#) [M39012/79-3008](#) [M39030/3-01N](#) [M39030/3-03N](#) [M3933/25-36N](#) [6500-7071-046](#) [6501-1071-002](#) [M83723/72W2457N](#) [6769](#) [CX050L2AQ](#) [7002-1541-010](#) [7002-1572-002](#) [7003-1572-002](#) [7004-1512-000](#) [7009-1511-004](#) [7010-1511-000](#) [7029-1511-060](#) [7101-1541-010](#) [7101-1571-002](#) [7105-1521-002](#) [7145-1521-002](#) [7209-1511-011](#) [7210-1511-012](#) [7210-1511-015](#) [7210-1511-019](#) [7210-1511-040](#) [7225-1512-050](#) [7242-1511-000](#) [73137-5015](#) [73251-0111](#) [73251-0672](#) [73276-1501](#) [73366-0013](#) [73404-2300](#) [73413-6080](#) [734151610](#) [73415-5721](#) [7405-1521-005](#)