

# Wiha Fibre-glass-reinforced Folding Rulers.

2 m of Perfection.



Often emulated but never surpassed – the Longlife® Plus folding metre rule: has a long service life and is accurate and easy to use.

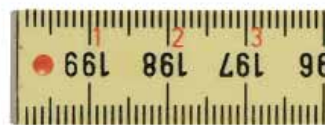
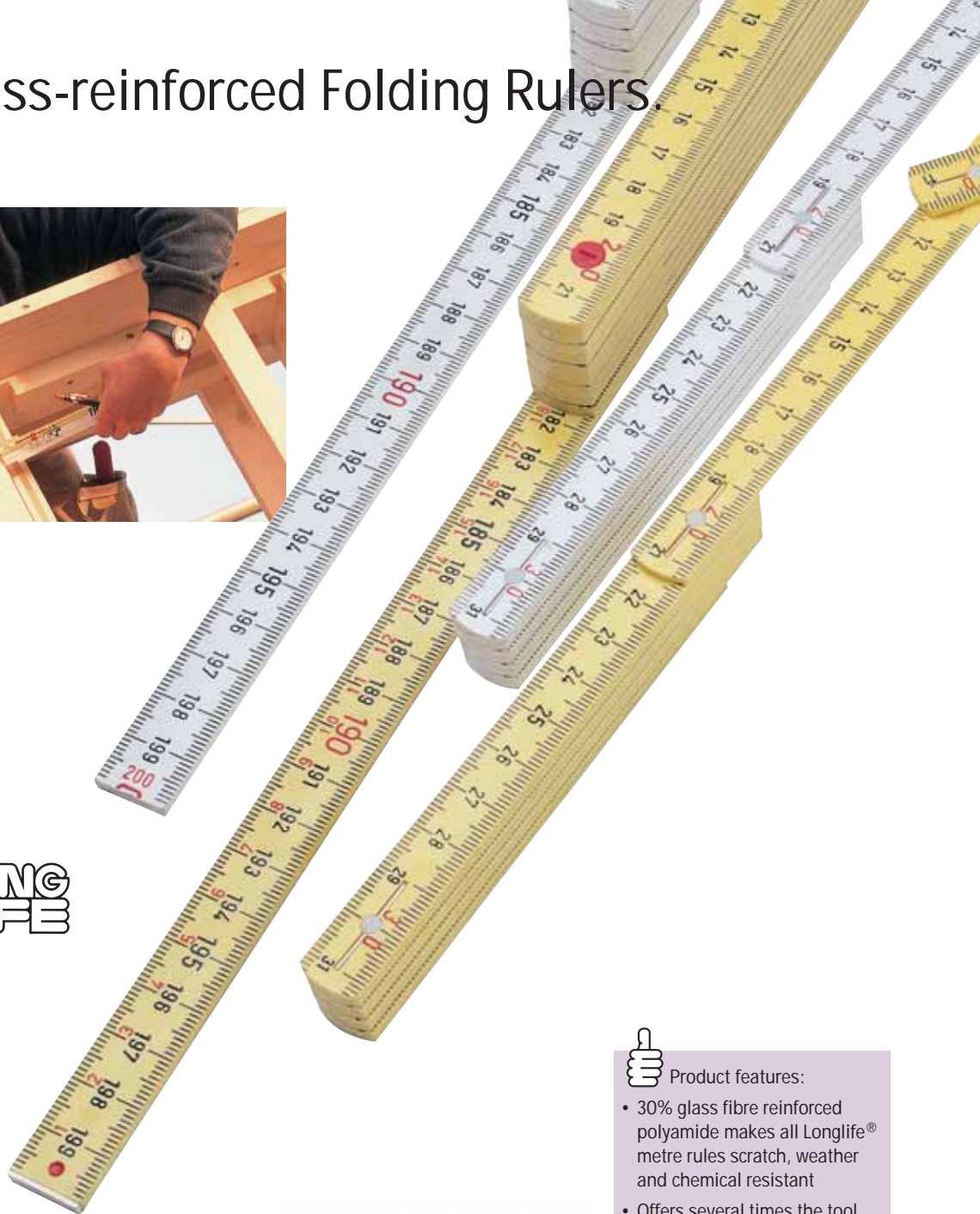


RECTO VERSO



The world's first folding ruler made of high-quality fibre-glass material was developed and manufactured in 1968 and, since then, has been successfully marketed under the "Longlife®" name. The patented joints with perfect durability properties are still unsurpassed. Compared to wooden folding metre rules our plastic versions have a substantially higher service life. A deep embossed, precise scale on every segment contributes to the excellent performance characteristics. Thanks to these particular properties this product has a unique selling point.

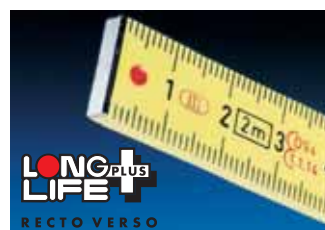
The broad programme is headed by a top product line. The Longlife®-Plus has a wear resistant metal end on the first and last segments which is permanently fixed and marked in red, through a deep embossing process. A Recto Verso scale allows readings to be taken from either end of the metre rule. The red joint bodies provide an additional indication of distance as they show distances of 20 cm.



Recto Verso Scale



Patented Precision Joints



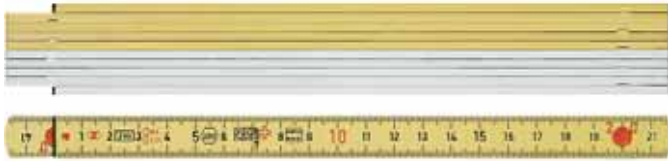
Metal ends



Product features:

- 30% glass fibre reinforced polyamide makes all Longlife® metre rules scratch, weather and chemical resistant
- Offers several times the tool life of folding rulers made of wood. Retains its shape when it comes into contact with water!
- Patented, play free joint with steel spring pin is wear resistant and maintenance free
- Usefull 90° snap-in position
- Deep embossed black scale in 1 mm increments on both sides of the rule. Every 10 cm is marked in red for easy reading
- Reliability over the entire rule due to the precision of each individual segment which lasts the entire tool life
- EU qualification approval for all metre rules with Swiss precision

## Longlife® Plus and Classic.



### 410 2001 Longlife® Plus Folding Metre Rule, 2 m, Metric, 10 Segments. With Metal Ends.

**Material:** Glass fibre reinforced polyamide. Scratch, weather and chemical resistant.

**Joints:** Patented, play free, wear resistant and maintenance free joint with steel spring pin for constant tension. Usefull 90° snap-in position.

**Scale:** Deep embossed black scale in 1 mm increments. Every 10 cm is marked in red.

**Accuracy:** According to EU-Standard accuracy class III.

**Extra:** Wear resistant metal ends on the first and last segments. Readable from both sides through a second, backwards running scale (Recto Verso).

Order-No.	15	140	Color	10	£
27055 1	15	140	yellow	10	6.00
27059 9	15	140	white	10	6.00
27060 5	15	140	yellow/white	10	6.00



### 410 2004 Classic Folding Metre Rule, 2 m, Metric, 10 Segments.

**Material:** Fibre-glass reinforced plastic is scratch-resistant and waterproof with great flexural strength.

**Joints:** Patented, play free, wear resistant and maintenance free joint with steel spring pin for constant tension. Usefull 90° snap-in position.

**Scale:** Deep embossed black scale in 1 mm increments

**Accuracy:** According to EU-Standard accuracy class III.

Order-No.	15	135	white	10	£
28023 9	15	135	white	10	3.60

## Wiha Info

Special scales available on request.



Sale only in pack quantities!

## Longlife®.



### 410 2000 Longlife® Folding Metre Rule, 2 m, Metric, 10 Segments.

**Material:** Glass fibre reinforced polyamide. Scratch, weather and chemical resistant.

**Joints:** Patented, play free, wear resistant and maintenance free joint with steel spring pin for constant tension. Usefull 90° snap-in position.

**Scale:** Deep embossed black scale in 1 mm increments. Every 10 cm is marked in red.

**Accuracy:** According to EU-Standard accuracy class III.

Order-No.	15	140	Color	10	£
27058 2	15	140	yellow	10	4.90
27057 5	15	140	white	10	4.90



### 410 1000 Longlife® Folding Metre Rule, 1 m, Metric, 10 Segments.

**Material:** Glass fibre reinforced polyamide. Scratch, weather and chemical resistant.

**Joints:** Patented, play free, wear resistant and maintenance free joint with steel spring pin for constant tension. Usefull 90° snap-in position.

**Scale:** Deep embossed black scale in 1 mm increments. Every 10 cm is marked in red.

**Accuracy:** According to EU-Standard accuracy class III.

Order-No.	13	45	Color	10	£
27061 2	13	45	yellow	10	3.73
27062 9	13	45	white	10	3.73



### 410 1010 Longlife® Folding Metre Rule, 1 m, Metric, 5 Segments.

**Material:** Glass fibre reinforced polyamide. Scratch, weather and chemical resistant.

**Joints:** Patented, play free, wear resistant and maintenance free joint with steel spring pin for constant tension. Usefull 90° snap-in position.

**Scale:** Deep embossed black scale in 1 mm increments. Every 10 cm is marked in red.

**Accuracy:** According to EU-Standard accuracy class III.

Order-No.	15	65	yellow	20	£
27063 6	15	65	yellow	20	3.95

## X-ON Electronics

Largest Supplier of Electrical and Electronic Components

*Click to view similar products for [wiha](#) manufacturer:*

Other Similar products are found below :

[56818](#) [00573](#) [01030](#) [75802](#) [21248](#) [26307](#) [27302](#) [27835](#) [28050](#) [28084](#) [28390](#) [28501](#) [28507](#) [26113](#) [26539](#) [26626](#) [26629](#) [26804](#) [28522](#)  
[28882](#) [32573](#) [32705](#) [32712](#) [32752](#) [32954](#) [34700](#) [36268](#) [36791](#) [38043](#) [43618](#) [44506](#) [54095](#) [31705](#) [31890](#) [32090](#) [32093](#) [32714](#) [32793](#)  
[36453](#) [37225](#) [39104](#) [41106](#) [44503](#) [45811](#) [46796](#) [66991](#) [74586](#) [74732](#) [27235](#) [28551](#)