

# DATA LOGGERS

## Simple Logger® II TRMS Voltage

### 600Vac/dc Model L261 & ±850Vdc Model L481

## One channel loggers for voltage measuring, monitoring and troubleshooting

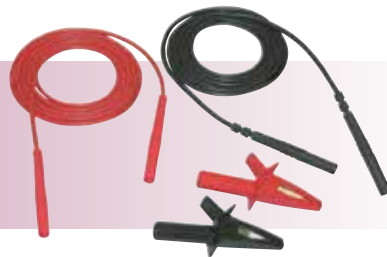


### ► SPECIFICATIONS

MODELS	L261	L481
<b>ELECTRICAL</b>		
Channels	One	
Input Connection	Two recessed 4mm safety banana jacks	
Measurement Range	0 to 600Vac/dc	-850 to ±850Vdc
Resolution	0.1V	
Accuracy (50/60Hz)	0 to 5V: unspecified 5 to 50V: ± (0.5% of Reading + 1V) 50 to 600V: ± (0.5% of Reading + 0.5V)	0 to 5V: unspecified 5 to 50V: ± (0.5% of Reading + 1V) 50 to 850V: ± (0.5% of Reading + 0.5V)
Input Impedance	40MΩ	
Sample Rate	64 samples/cycle	Maximum of 8 per second
Storage Rate	Programmable from 8 every second to 1 every day	
Storage Modes	Start/Stop, FIFO, Extended Recording Mode (XRM™) and Alarm	
Recording Length	15 minutes to 8 weeks, programmable using DataView®	
Memory	240,000 measurements (512KB) The recorded data is stored in non-volatile memory and will be retained even if the battery is low or removed.	
Communication	USB 2.0 optically isolated	
Power Source	2 x 1.5V AA-cell Alkaline batteries (included)	
Battery Life	100 hours to >45 days (dependent on sample rate and recording length)	
<b>MECHANICAL</b>		
Dimensions	4.94 x 2.75 x 1.28" (125 x 70 x 32mm)	
Weight (with battery)	6.4 oz (181g)	
Case	UL94-V0	
Vibration	IEC 68-2-6 (1.5mm, 10 to 55Hz)	
Shock	IEC 68-2-27 (30G)	
Drop	IEC 68-2-32 (1m)	

### ► PRODUCT INCLUDES

Set of two color-coded 5 ft voltage leads, color-coded alligator clips (red/black), USB type A to 5 pin Mini-B, and USB stick supplied with DataView® software and user manual.



### ► FEATURES

- TRMS voltage recording up to 600Vac/dc (Model L261)
- Bipolar voltage recording up to ±850Vdc (Model L481)
- AC: 64 samples per cycle and DC: 8 samples per sec (Model L261)
- Programmable storage rates from 8 every second to 1 every day
- 4 user selectable storage modes
- Stores up to 240,000 measurements in non-volatile memory
- Powered by standard Alkaline batteries
- Lightweight, compact, fits anywhere
- 5 LED indicators quickly and clearly display logger status
- Includes FREE DataView® software for data storage, real-time display, analysis and report generation
- Optically isolated USB 2.0 communication cable included
- EN 61010-1; 300V CAT IV; 600V CAT III

### ► APPLICATIONS ( MODEL L261 )

- Surge and Sag recording
- Long term supply monitoring
- Industrial, commercial and residential monitoring
- Monitor voltage harmonics
- Find intermittent voltage problems
- Machine monitoring

### ► APPLICATIONS ( MODEL L481 )

- Rail voltage monitoring
- Long term supply monitoring
- Find intermittent voltage problems
- Machine monitoring
- Windmill monitoring

CATALOG NO.	DESCRIPTION
2126.05	Simple Logger® II Model L261 (1-Channel, TRMS, 600Vac/dc, DataView® software)
2126.25	Simple Logger® II Model L481 (1-Channel, ±850Vdc, DataView® software)

# DataView®

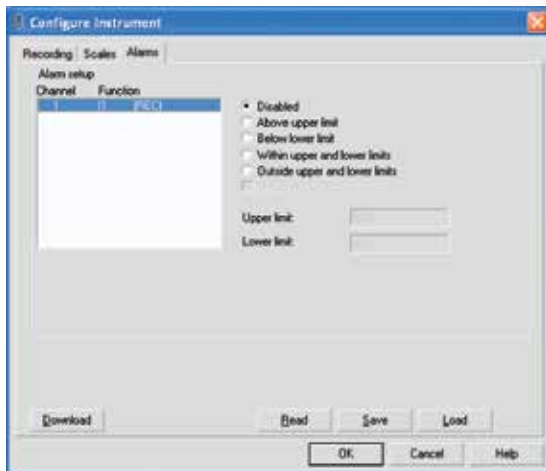
## Data Analysis and Reporting Software for Data Loggers



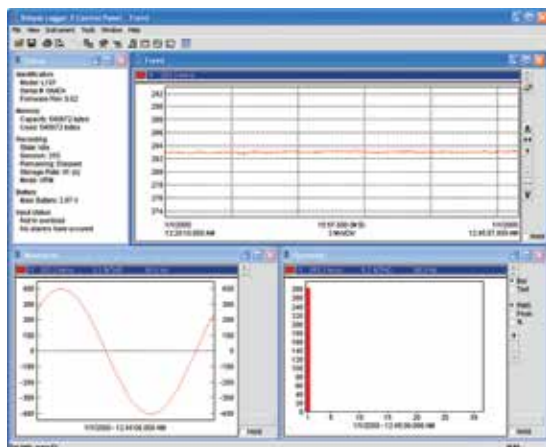
### Typical DataView® Functional Displays



Quick and simple configuration of all functions and settings from one dialog box.



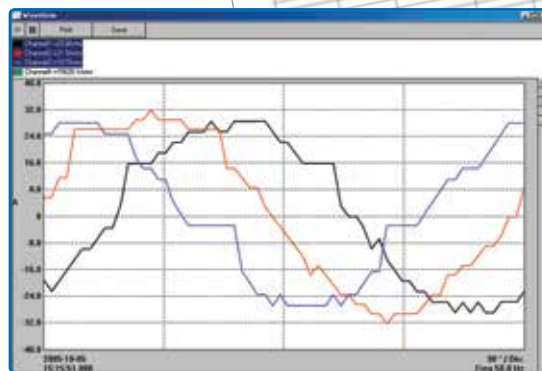
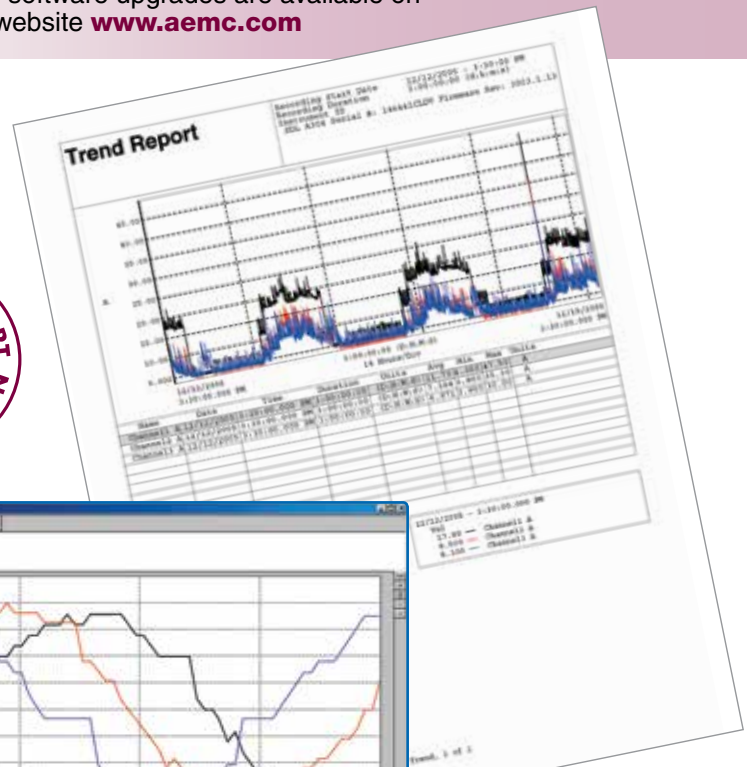
Configure all alarm functions with straightforward selections.



Real-time view of trend, waveform and status screens.

### Configure all data logger functions of the Simple Logger® II Models

- Display and analyze real-time data on your PC
- Configure all data logger functions and parameters from your PC including sample rate, recording length, channel configuration and more
- Create and store a complete library of configurations that can be uploaded to the logger as needed
- Zoom in and out and pan through sections of the graph to analyze the data
- Download, display and analyze recorded data
- Display waveforms, trend graphs, harmonics (AC models) and text summaries
- Create custom views and reports
- Print reports using standard or custom templates you design
- Free software upgrades are available on our website [www.aemc.com](http://www.aemc.com)



Real-time display of all active inputs on computer through DataView® software.

## **X-ON Electronics**

Largest Supplier of Electrical and Electronic Components

*Click to view similar products for [aemc manufacturer](#):*

Other Similar products are found below :

[2118.79](#) [2118.82](#) [6417](#) [SL261](#) [MN261](#) [MN106](#) [2119.02](#) [MD301](#) [SR601](#) [MN103](#) [1017.84](#) [6610](#) [SR752](#) [MS3474W10-6P](#) [MS3456L16-10SY-LC](#) [BR07](#) [2118.73](#) [MS3475W14-4S-LC](#) [MS3456L20-14SX-LC](#) [MS3450W22-2SY-LC](#) [MS3475W14-4SW](#) [D38999/26WD5PN](#)