

# DATA LOGGERS

## Simple Logger® II Thermocouple & 4-Channel Event

### Models L404 & L642

2 and 4 channel specialty loggers for recording temperature from thermocouple inputs and events from pulse inputs

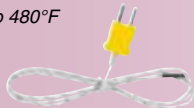
#### ► SPECIFICATIONS

MODELS	L404	L642
<b>ELECTRICAL</b>		
Channels	Four	Two
Input Connection	One 8-position removable screw-type terminal block	Two miniature, thermocouple connectors
Measurement Range:		°F (°C)
J	—	-346 to +2192 (-210 to +1200)
K	—	-328 to +2501 (-200 to +1372)
T	—	-328 to +752 (-200 to +400)
N	—	-328 to +2372 (-200 to +1300)
E	—	-238 to 1742 (-150 to +950)
R	—	32 to 3212 (0 to 1767)
S	—	32 to 3212 (0 to 1767)
Voltage Range	0 to 5Vdc or contact closure	
Input Impedance	<150kΩ	
Resolution	—	0.1° C/F < 1000° C/F; 1° ≥ 1000° C/F
Accuracy	—	±(0.1% to 0.2% of Reading + 0.6° to 1°) depending on the range and T/C type
Sample Rate	Maximum of 8 per second	8 samples taken at storage interval
Storage Rate	Event triggered (maximum once every two sample periods)	Programmable from 5s to 1 per day
Storage Modes	Event recording	Start/Stop, FIFO, Extended Recording Mode (XRM™) and Alarm
Recording Length	15 minutes to 8 weeks, programmable using DataView®	
Memory	<b>L404</b> 50,000 events (512KB); <b>L642</b> 240,000 measurements (512KB) The recorded data is stored in non-volatile memory and will be retained even if the battery is low or removed.	
Communication	USB 2.0 optically isolated	
Power Source	2 x 1.5V AA-cell Alkaline batteries (included)	
Battery Life	100 hours to >45 days (dependent on sample rate and recording length)	
<b>MECHANICAL</b>		
Dimensions	5.06 x 2.75 x 1.28" (129 x 70 x 32mm)	4.94 x 2.75 x 1.28" (125 x 70 x 32mm)
Weight (with battery)	6.4 oz (18g)	7 oz (200g)
Case	UL94-V0	
Vibration	IEC 68-2-6 (1.5mm, 10 to 55Hz)	
Shock	IEC 68-2-27 (30G)	
Drop	IEC 68-2-32 (1m)	

#### ► PRODUCT INCLUDES (MODEL L642)

##### Thermocouple-Flexible

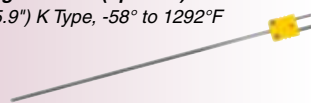
Catalog #2126.47  
(1m) K Type, -58° to 480°F



#### ► ACCESSORY (MODEL L642)

##### Thermocouple-Needle

Catalog #2126.46 (optional)  
(12 x 5.9") K Type, -58° to 1292°F



#### ► FEATURES

- 2 input channels (Model L642)
- 4 input channels (Model L404)
- User-selectable thermocouple types J, K, T, N, E, R, and S (not included) (Model L642)
- Programmable storage rates from 1 every 5 seconds to 1 every day (Model L642)
- 4 user selectable storage modes (Model L642)
- Records on event only (Model L404)
- Stores up to 240,000 measurements in non-volatile memory (Model L642)
- Stores up to 50,000 events in non-volatile memory (Model L404)
- Powered by standard Alkaline batteries
- 5 LED indicators quickly and clearly display logger status
- Includes FREE DataView® software for data storage, real-time display, analysis and report generation
- Optically isolated USB 2.0 communication cable included
- EN 61010-1; 50V CAT III

#### ► APPLICATIONS (MODEL L404)

- Determine machinery run/down times
- Determine event sequencing
- Count events and record
- Record event duration
- Accumulate rainfall data

#### ► APPLICATIONS (MODEL L642)

- HVAC monitoring
- Process monitoring
- Refrigeration monitoring
- And many more

CATALOG NO.	DESCRIPTION
2126.29	Simple Logger® II Model L404 (4-Channel, Event, DataView® software)
2126.08	Simple Logger® II Model L642 (2-Channel, Temperature Thermocouple, DataView® software)
<b>Accessories (Optional)</b>	
2126.46	Thermocouple-Needle (12 x 5.9", K Type, -58° to 1292°F)

# DataView®

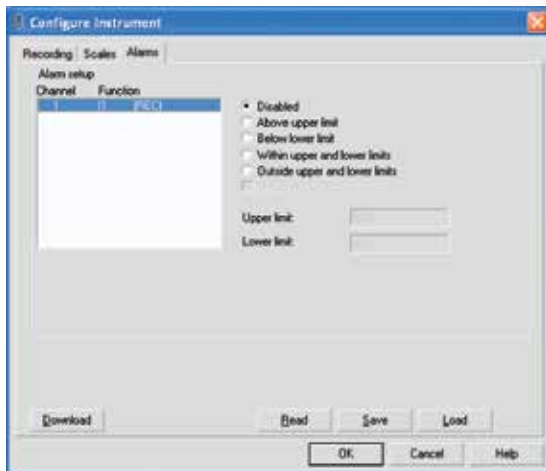
## Data Analysis and Reporting Software for Data Loggers



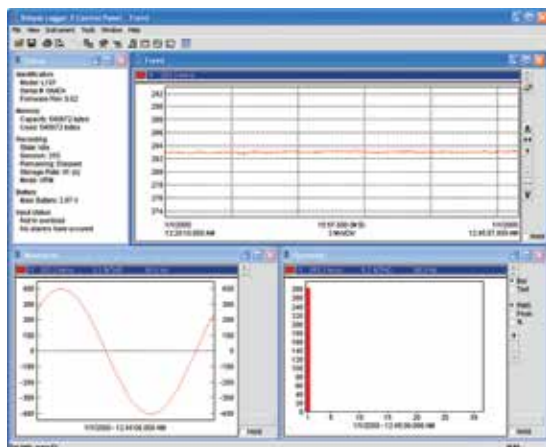
### Typical DataView® Functional Displays



Quick and simple configuration of all functions and settings from one dialog box.



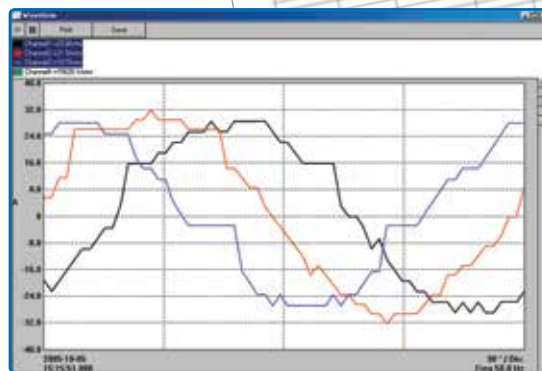
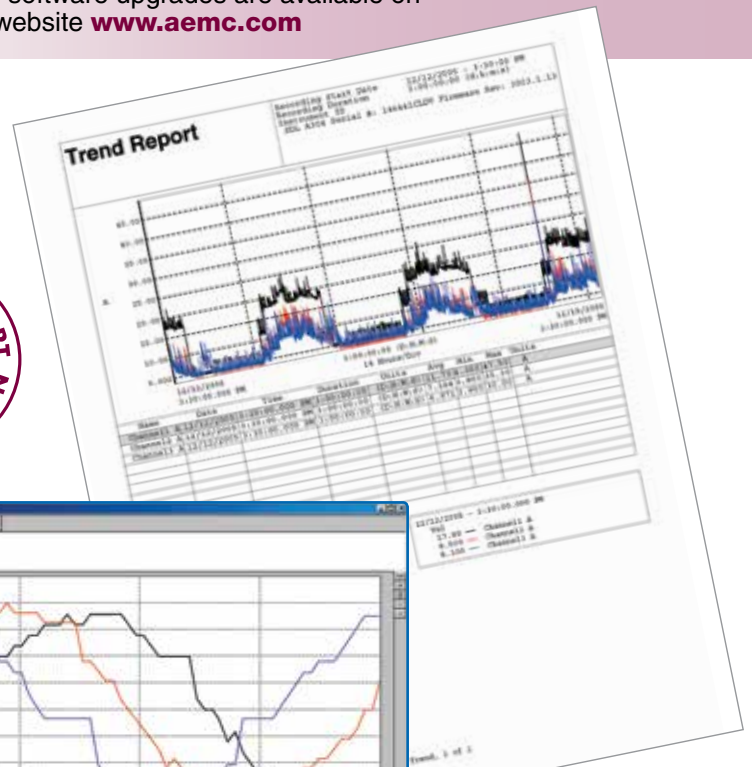
Configure all alarm functions with straightforward selections.



Real-time view of trend, waveform and status screens.

### Configure all data logger functions of the Simple Logger® II Models

- Display and analyze real-time data on your PC
- Configure all data logger functions and parameters from your PC including sample rate, recording length, channel configuration and more
- Create and store a complete library of configurations that can be uploaded to the logger as needed
- Zoom in and out and pan through sections of the graph to analyze the data
- Download, display and analyze recorded data
- Display waveforms, trend graphs, harmonics (AC models) and text summaries
- Create custom views and reports
- Print reports using standard or custom templates you design
- Free software upgrades are available on our website [www.aemc.com](http://www.aemc.com)



Real-time display of all active inputs on computer through DataView® software.

## **X-ON Electronics**

Largest Supplier of Electrical and Electronic Components

*Click to view similar products for [aemc manufacturer](#):*

Other Similar products are found below :

[2118.79](#) [2118.82](#) [6417](#) [SL261](#) [MN261](#) [MN106](#) [2119.02](#) [MD301](#) [SR601](#) [MN103](#) [1017.84](#) [6610](#) [SR752](#) [MS3474W10-6P](#) [MS3456L16-10SY-LC](#) [BR07](#) [2118.73](#) [MS3475W14-4S-LC](#) [MS3456L20-14SX-LC](#) [MS3450W22-2SY-LC](#) [MS3475W14-4SW](#) [D38999/26WD5PN](#)