

Back Boxes

Our range of plastic back boxes are cost effective solutions for a wide range of surface mount applications.



Manufactured in tough ABS, they are much less brittle than traditional electrical back boxes and, so, less prone to damage during installation.

Single gang variants are designed for use with 86mm x 86mm faceplates and are available in four depths (21mm, 32mm, 37mm and 45mm).

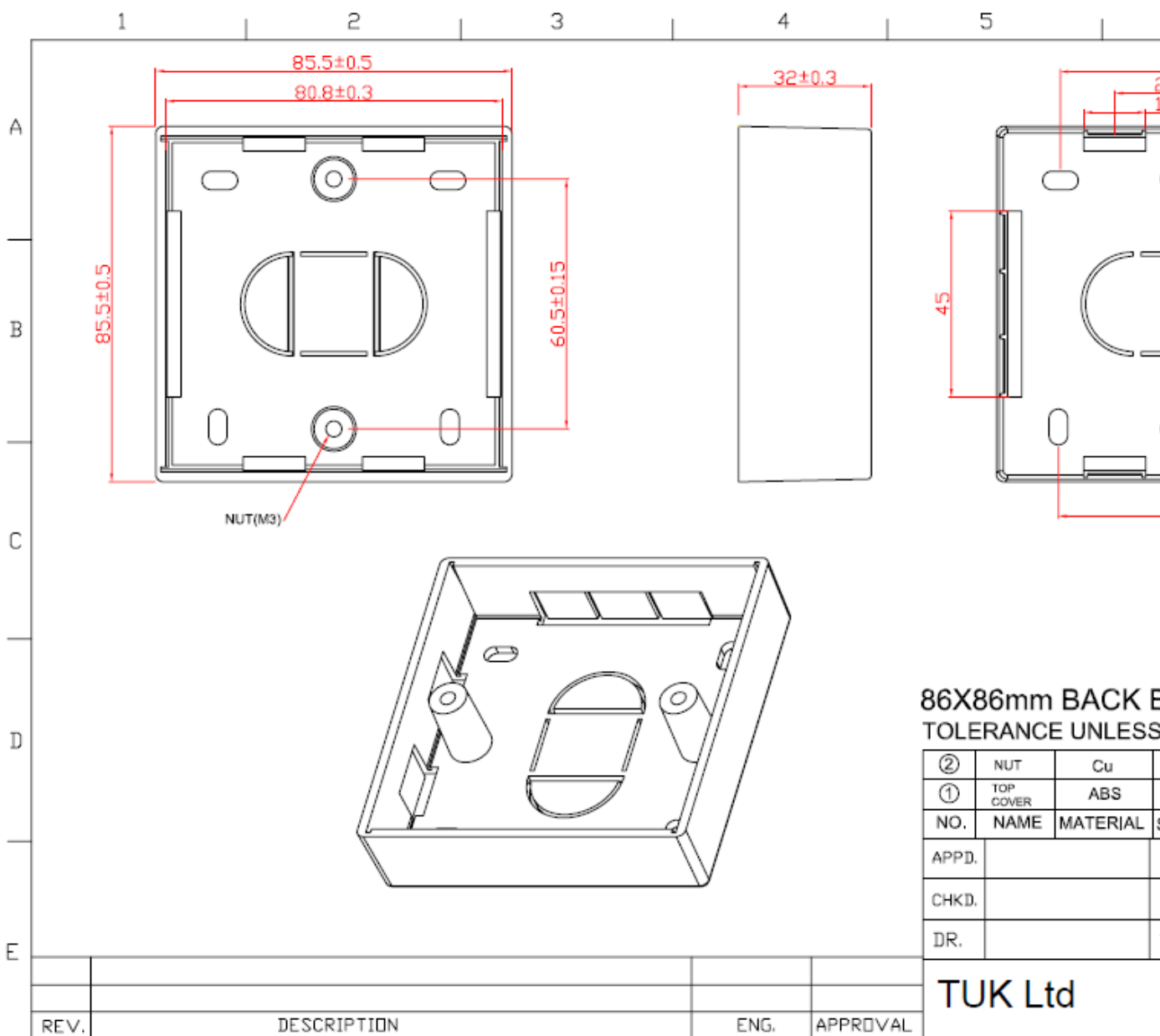
Double gang variants accept 146mm x 86mm faceplates and are available in three depths (32mm, 37mm and 45mm).

The standard colour for all variants is bright white.

All variants feature a selection of mounting holes for ease of installation. There are cable entry knockouts on all sides of the back box as well as the base for maximum flexibility.

Code	Description	Inner Carton Quantities	Outer Carton Quantities
3L21	21mm deep (18mm internal clearance) single gang pattress backing box	20	200
3L32	32mm deep (29mm internal clearance) single gang pattress backing box	20	100
3L32G2	32mm deep (29mm internal clearance) double gang pattress backing box	10	100
3L37	37mm deep (34mm internal clearance) single gang pattress backing box	20	100
3L37G2	37mm deep (34mm internal clearance) double gang pattress backing box	10	100
3L45	45mm deep (42mm internal clearance) single gang pattress backing box	20	100
3L45G2	45mm deep (42mm internal clearance) double gang pattress backing box	10	100

Other variants are available to special order.



86X86mm BACK E
TOLERANCE UNLESS

NO.	NAME	MATERIAL
②	NUT	Cu
①	TOP COVER	ABS

TUK Ltd

TUK Ltd, Unit 4, Wimbledon Stadium Business Centre, Riverside Road, London, SW17 0BA

Tel: 020 8946 6688 Fax: 020 8879 7410 Email: sales@tuk.co.uk Website: www.tuk.co.uk

X-ON Electronics

Largest Supplier of Electrical and Electronic Components

Click to view similar products for [tuk](#) manufacturer:

Other Similar products are found below :

[SP1YW](#) [SP0.5BL](#) [FJKPT](#) [SKMCBKDPM](#) [PXCAT6S8XL2](#) [OT45BK](#) [SKFYW](#) [TSY](#) [PXSPDY6S#100](#) [PSPDY5#100](#) [PSDL-6#20](#) [WJOL](#)
[F78BKB](#) [FACK2BKDPM](#) [FJP2](#) [SKFBKDPM](#) [SPDL5BK](#) [SP10BK](#) [SKH1LJ](#) [PXSPDY5#10](#) [PSDL-5#100](#) [WJSG](#) [FJ445](#) [SP2GN](#) [SP10GN](#)
[SLJBKDPM](#) [SILS](#) [SP5GN](#) [SGPZ10BK](#) [MGOP6](#) [PXSPDY6#10](#) [TRCSPDY3](#) [SKH4](#) [SGKSSU-45WH](#) [SP10BL](#) [SGPZ3BK](#) [ADF](#) [CPR2](#)
[SEKEI-45WH](#) [SGKH2](#) [TRCSPDYBP](#) [SP10YW](#) [KPJ2BK](#) [KH2](#) [KOCSM](#) [SGACK2SPM](#) [KPH1BK](#) [PXSPDY6#100](#) [KOCSMDPM](#) [SP1BK](#)