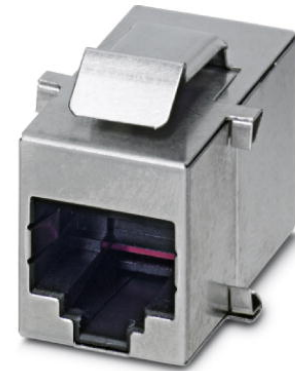



VS-08-BU-RJ45/BU

Order No.: 1689064

<http://eshop.phoenixcontact.co.uk/phoenix/treeViewClick.do?UID=1689064>RJ45 socket insert, modular (Keystone), CAT5e, 8-pos., shielded,
socket on socket

Ethernet

**Commercial data**

EAN	 4 017918 876937
Pack	5
Customs tariff	85366990
Gross weight in pieces	9.52 g
Country of Origin	DE
Catalog page information	Page 285 (PC-2011)

Product notesWEEE/RoHS-compliant since:
21/12/2005

Please note that the data given here has been taken from the online catalog. For comprehensive information and data, please refer to the user documentation at <http://www.download.phoenixcontact.com>. The General Terms and Conditions of Use apply to Internet downloads.

Technical data**Mechanical characteristics**

Number of positions	8
Number of slots	1
Shielded	Yes
Insertion/withdrawal cycles	≥ 1000
Connection method	female
Ambient temperature (operation)	-20 °C ... 60 °C

Material data

Inflammability class according to UL 94	V0
Housing material	Stainless steel
Contact carrier material	ABS
Contact material	Copper alloy
Contact surface material	Gold over nickel
Degree of protection	IP20

Electrical characteristics

Number of positions	8
Transmission characteristics (category)	CAT5 (IEC 11801:2002), CAT5e (TIA 568B:2001)
Rated current	1.5 A
Surge voltage category	II
Pollution degree	2

Certificates

Certification

Certifications applied for:

Certification Ex:

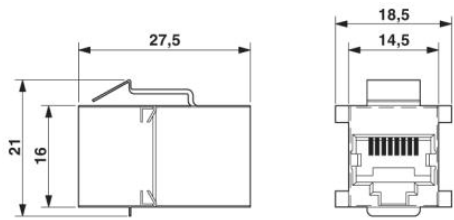
Accessories

Item	Designation	Description
General		
1689433	VS-08-A-RJ45/MOD-1-IP20	RJ45 panel mounting frame, 1x, IP20, for modular socket inserts (Keystone), without mounting screws
1689080	VS-08-A-RJ45/MOD-1-IP67	RJ45 panel mounting frame, IP67, for modular socket inserts (Keystone), for square panel cutout, with grommet, without mounting screws, color: gray
1658642	VS-08-A-RJ45/MOD-1-IP67-BK	RJ45 panel mounting frame, IP67, for modular socket inserts (Keystone), for square panel cutout, with grommet, without mounting screws, color: black
1689844	VS-08-A-RJ45/MOD-1-R-IP67	RJ45 panel mounting frame, IP67, for modular socket inserts (Keystone), for round panel cutout, with grommet, with thread and union nut, color: gray
1658053	VS-08-A-RJ45/MOD-1-R-IP67 BK	RJ45 panel mounting frame, IP67, for modular socket inserts (Keystone), for round panel cutout, with grommet, with thread and union nut, color: black

1652868	VS-08-A-S-RJ45/MOD-1-IP67	RJ45 panel mounting frame, IP67, irradiated for welding applications, for modular socket inserts (Keystone), for square panel cutout, with grommet, without mounting screws
1654772	VS-08-A-S-RJ45/MOD-1-R-IP67	RJ45 panel mounting frame, IP67, irradiated for welding applications, for modular socket inserts (Keystone), for round panel cutout, with grommet, with thread and union nut

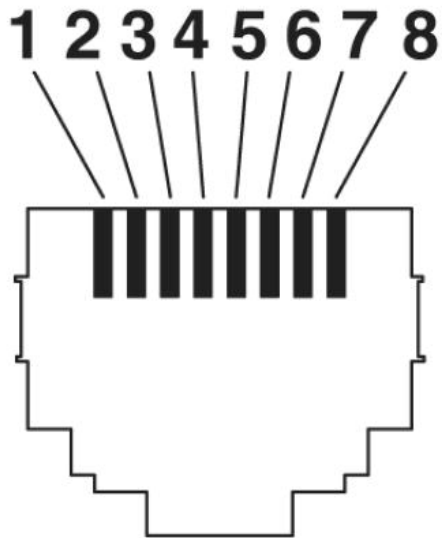
Drawings

Dimensioned drawing



RJ45 socket insert, keystone

Schematic diagram



Address

PHOENIX CONTACT Ltd
Halesfield 13
Telford / Shropshire / TF7 4PG,England
Phone 01952 681 700
Fax 01952 681 799
<http://www.phoenixcontact.co.uk>



Phoenix Contact Ltd.
Technical modifications reserved;

X-ON Electronics

Largest Supplier of Electrical and Electronic Components

Click to view similar products for [Modular Connectors / Ethernet Connectors](#) category:

Click to view products by [Phoenix Contact](#) manufacturer:

Other Similar products are found below :

[RJE231881317T](#) [MP1010RX-1000](#) [MP44RX-1000](#) [GAX-3-66](#) [GAX-8-62](#) [93606-0253](#) [GD-A-44](#) [GDCX-PA-66-50](#) [GDCX-PN-64](#) [GDCX-PN-66](#) [GDCX-PN-66-50](#) [GDLX-A-66](#) [GDLX-A-88](#) [GDLX-N-66](#) [GDLX-S-88K](#) [GDTX-S-88-50](#) [GDX-PA-1010](#) [GLX-N-1010M-BLK](#) [GLX-N-44M](#) [GLX-S-88M-BLK](#) [GMX-N-1010](#) [GMX-S-1010](#) [GMX-S-66](#) [GMX-SMT2-N-1010](#) [GMX-SMT2-N-64-50](#) [GMX-SMT2-S6-88](#) [GMX-SMT4-N-88](#) [GPX-2-64](#) [GRT1-BT1-5](#) [GSGX-N-2-88](#) [GSX-NS2-88-3.05](#) [GSX-NS2-88-3.05-50](#) [GSX-NS-88-3.05-30](#) [GSX-NS-88-3.05-50](#) [GSX-NS-88-3.68](#) [1-1775629-2](#) [GWLX-S-88-GR](#) [GWLX-S9-88-YG](#) [1300500326](#) [1300500227](#) [1300530003](#) [1300570002](#) [1324640-4](#) [RJ11FTVC2G](#) [RJ11FTVC2N](#) [RJFTVX2SA1G](#) [132764-001](#) [1400000](#) [1413176](#) [1413235](#)