

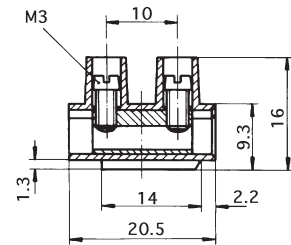
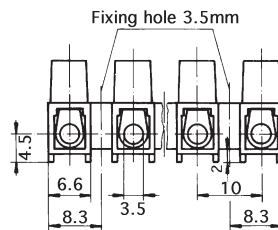
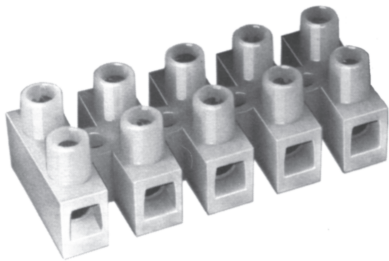
Electromechanical Terminal Blocks



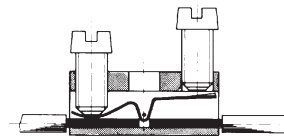
Terminal blocks - strip type

SERIES 500

10A terminal blocks - standard base



TYPE MDS



Length = number of poles x 10 less 3.4mm

FEATURES

Series 500 terminal blocks are available in 3 grades of housing material, nylon 6, nylon 6.6 (H type) and nylon 6.6 (T type) which is suitable for high temperature applications. Two variations of wire protectors are offered, type HDS have standard protectors and type MDS have barrier protectors. Versions without wire protectors are also offered with barriers in inserts (type SL). Captive screws are fitted as standard.

Approvals											
Nominal Cross-Section mm ²	2.5	22-10 AWG 30A	24-12 AWG 25A	2.5	2.5	2.5	2.5	2.5	2.5	2.5	2.5
Voltage Rating	V	450	150/250 500 KUS for 600v	300	400	400	400	400	400	400	400

TECHNICAL DETAILS

Mouldings:	nylon 6, natural, UL94 V2 nylon 6.6, natural, UL94 V2 (H) nylon 6.6, brown, UL94 V0 (T)
Inserts:	brass, tinned
Screws:	M3 steel, zinc plated, chromed
Screw tightening torque:	max: 0.5 Nm
Maximum working temp:	nylon 6: 100° C nylon 6.6 (H type): 100° C nylon 6.6 (T type): 160° C
Current rating:	to EN 60 598: 16A to EN 60 998: 24A
Voltage rating:	see approvals
Conductor size:	without wire protectors: 6.0mm ² with wire protectors: 2.5mm ²
Wire stripping length:	7mm - 7.5mm

OPTIONS

Marking: special printing available. Please provide sketch.

Cut lengths: standard 12 pole lengths can be cut to shorter lengths.

Covers: series ABK405 - see page 63.

PART NUMBER CODE														
Without protectors Leave blank			Number of poles Enter 02 - 12			Nylon 6, V2 Leave blank			Nylon 6.6, V2 Enter H					
With barrier inserts Enter SL						Nylon 6.6, V0 Enter T								
With std protectors Enter HDS														
With barrier protectors Enter MDS														
5	0	0							3	5	-	-	-	-

X-ON Electronics

Largest Supplier of Electrical and Electronic Components

Click to view similar products for [metway](#) manufacturer:

Other Similar products are found below :

[560-K4CF](#) [503SI03E](#) [98001RZ03SKB](#) [5001235](#) [1003SI03E](#)