

COMBINATION KNOBS

Order data on pages 194-199

OKW
GEHÄUSE
SYSTEME



WELL ADJUSTED



THE PRODUCT

The name COMBINATION KNOBS stands for an exceedingly functional range of rotary buttons with a reliable collet fixture system.

They offer a versatile range of possible applications as round knobs, wing knobs and spindle-shaped knobs with a large selection of accessories.

YOUR ADVANTAGE

Tried and tested collet fixture system. Convenient assembly of knobs from the front, easy adjusting (by means of an adjusting key, see accessory). Tight fitting of knobs on the axis.

Round, wing and spindle-shaped knobs with the same standardised design and with matt surface.

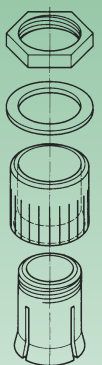
A large variety of functional accessories, e.g. covers in different colours and transparent dials. Easy push-on assembly.

Sizes (mm)

ø 9, ø 10, ø 13,5, ø 16,
ø 20, ø 23, ø 31, ø 40, ø 50
(depends on type)

Fastening

with collet fixture system
for rotary potentiometer
with shaft ends
corresponding to
DIN 41591



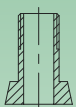
detailed drawings see our website
www.okw.com



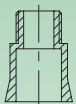
FUNCTIONAL DESIGN

Sizes 10 and 13 have blind holes and screw fixing. From knob size 23 up through holes ① (sizes 16 + 20 stepped ②, except for axes 4 mm).

①



②



YOUR ADVANTAGE

Torsion protection for axes 6/4.6 mm available as accessory. Suitable for round and wing knobs sizes \varnothing 20 to 50 mm with 6 mm borehole.

We also produce our COMBINATION KNOBS in special colours, moq reserved. Please advise us of the colour and quantity you require.

APPLICATIONS

Well-proven for electro-mechanical rotary potentiometers with shaft ends corresponding to DIN 41591, e.g. within the field of measuring, controlling, regulating.





ROUND KNOB		WING KNOB		SPINDLE-SHAPED KNOB		COVER		
ABS (UL 94 HB)		ABS (UL 94 HB)		ABS (UL 94 HB)		ABS (UL 94 HB) ...100 = indicator line white, otherwise in black		
Knob ø	Shape	Borehole D						
9		ROUND KNOB 4 mm, with chamfer		A 26 09 040			a = 8.0 b = 6.5 c = 2.6	<ul style="list-style-type: none"> A 41 10 000 A 41 10 002 A 41 10 004 A 41 10 005 A 41 10 006 A 41 10 007 A 41 10 008
10		ROUND KNOB 3 mm, with chamfer	A 25 10 030	A 26 10 030	A 25 10 038	A 26 10 038		
		1/8", with chamfer	A 25 10 320	A 26 10 320				
		4 mm, with chamfer	A 25 10 040	A 26 10 040	A 25 10 048	A 26 10 048		
13.5		ROUND KNOB 4 mm, with chamfer	A 25 13 040	A 26 13 040	A 25 13 048	A 26 13 048	a = 11.2 b = 9.2 c = 3.0	
		6 mm, with chamfer	A 25 13 060	A 26 13 060	A 25 13 068	A 26 13 068		
	WING KNOB 6 mm, with chamfer		A 28 13 060					
16		ROUND KNOB 4 mm, without chamfer	A 25 16 040	A 26 16 040			a = 13.5 b = 11.2 c = 4.0	
		6 mm, with chamfer	A 25 16 060	A 26 16 060	A 25 16 068	A 26 16 068		
		1/4", with chamfer	A 25 16 630	A 26 16 630	A 25 16 638			
	WING KNOB 6 mm, with chamfer		A 28 16 060					
	SPINDLE-SHAPED KNOB 3 mm, with chamfer		A 24 16 030			a = 14.0		
	4 mm, with chamfer	A 23 16 040	A 24 16 040		A 24 16 048	b = 1.2 c = 4.0		



ARROW DISK	DISK	DIAL	STATOR	NUT COVER
<p>ABS (UL 94 HB)</p>	<p>ABS ...010 = indicator line white</p>	<p>Polycarbonate ...0 = symbols black ...9 = symbols silver</p>	<p>Aluminium indicator line black</p>	<p>ABS ...010 = indicator line white ...018 = indicator line black</p>
<p>a = 7.0 b = 10.1 c = 7.0</p> <p>A 42 10 000 A 42 10 002 A 42 10 008</p>		<p>a = 20.0 b = 7.0 c = 1.5</p> <p>(only for knob ø 10)</p> <p>A 44 10 060</p>		<p>a = 15.5 b = 14.0 c = 7.0 d = 2.9 e = 3.7</p> <p>(only for knob ø 10)</p> <p>A 75 10 000 A 75 10 010 A 75 10 018</p>
<p>a = 9.0 b = 13.6 c = 8.0</p> <p>A 42 13 000 A 42 13 002 A 42 13 008</p>		<p>a = 26.0 b = 8.0 c = 1.5</p> <p>A 44 13 010 A 44 13 020 A 44 13 049 A 44 13 060</p>		<p>a = 17.5 b = 15.7 c = 9.0 d = 3.2 e = 4.3</p> <p>A 75 13 000 A 75 13 010 A 75 13 018</p>
<p>a = 10.5 b = 16.3 c = 10.0</p> <p>A 42 16 000 A 42 16 002 A 42 16 008</p>	<p>a = 31.0 b = 16.5 c = 1.3</p> <p>A 73 16 000 A 73 16 010</p>	<p>a = 31.0 b = 14.5 c = 10.0 d = 2.5 e = 1.7</p> <p>(ø 16 with moulded on nut cover)</p> <p>A 44 16 001 A 44 16 010 A 44 16 020 A 44 16 060</p>	<p>a = 16.0 b = 10.1 c = 15.5</p> <p>A 60 16 019</p>	<p>a = 19.3 b = 17.6 c = 10.0 d = 3.3 e = 4.3</p> <p>a = 16.4 b = 14.6 c = 10.0 d = 3.3 e = 4.3 f = 10.2</p> <p>A 75 16 000 A 75 16 010 A 75 16 018 A 76 16 000 A 76 16 008</p>
				<p>a = 16.0 b = 14.8 c = 8.3 d = 3.3 e = 4.3</p> <p>A 51 16 000</p>

descriptions of standard colours see **page 199**



ROUND KNOB		SPINDLE-SHAPED KNOB				COVER				
ABS (UL 94 HB)						ABS (UL 94 HB) ...100 = indicator line white, otherwise in black 				
Knob Ø	Shape	Borehole D					without indicator line	with indicator line		
20	ROUND KNOB	4 mm, without chamfer	A 25 20 040	A 26 20 040			a = 17.5	A 41 20 000	A 41 20 100	
		6 mm, with chamfer	A 25 20 060	A 26 20 060	A 25 20 068	A 26 20 068	b = 15.2	A 41 20 002	A 41 20 102	
		1/4", with chamfer	A 25 20 630				c = 5.5		A 41 20 104	
23	ROUND KNOB	4 mm, without chamfer	A 25 23 040	A 26 23 040			a = 20.4	A 41 23 000	A 41 23 100	
		6 mm, without chamfer	A 25 23 060	A 26 23 060	A 25 23 068	A 26 23 068	b = 17.4	A 41 23 002	A 41 23 102	
		1/4", without chamfer	A 25 23 630		A 25 23 638		c = 6.5	A 41 23 004		
	SPINDLE-SHAPED KNOB	4 mm, with chamfer		A 24 23 040			a = 20.9		A 50 23 000	A 50 23 100
		6 mm, with chamfer		A 24 23 060		A 24 23 068	b = 1.2		A 50 23 008	A 50 23 108
							c = 6.5			
31	ROUND KNOB	6 mm, without chamfer	A 25 31 060	A 26 31 060	A 25 31 068	A 26 31 068	a = 28.4		A 41 31 000	A 41 31 100
		1/4", without chamfer	A 25 31 630				b = 26.0		A 41 31 002	A 41 31 102
							c = 9.0		A 41 31 005	
	SPINDLE-SHAPED KNOB	6 mm, with chamfer		A 24 31 060		A 24 31 068	a = 29.0		A 50 31 000	A 50 31 100
							b = 1.4			A 50 31 107
							c = 9.5		A 50 31 008	A 50 31 108



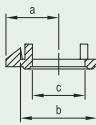
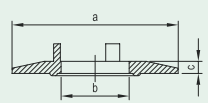
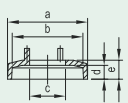



ARROW DISK	DISK		DIAL	STATOR	NUT COVER	
<p>ABS (UL 94 HB)</p>	<p>ABS ...010 = indicator line white</p>		<p>Polycarbonate ...0 = symbols black ...9 = symbols silver</p>	<p>Aluminium indicator line black</p>	<p>ABS</p>	
<p>a = 13.0 b = 20.0 c = 12.0</p> A 42 20 000 A 42 20 002 A 42 20 008	A 73 23 010 		<p>a = 36.0 b = 12.0 c = 1.5</p> A 44 20 001 A 44 20 010 A 44 20 060	<p>a = 20.0 b = 10.1 c = 18.0</p> <p>A 60 20 019</p>	 	
<p>a = 14.3 b = 23.0 c = 16.5</p> A 42 23 000 A 42 23 002 A 42 23 008	<p>a = 31.0 b = 16.5 c = 1.3</p>	<p>A 73 23 010</p>	<p>a = 40.0 b = 16.3 c = 1.3</p> A 44 23 010 A 44 23 020 A 44 23 039 A 44 23 060	<p>a = 23.0 b = 10.2 c = 20.0</p> <p>A 60 23 019</p>	<p>a = 23.3 b = 20.0 c = 13.7 d = 3.3 e = 4.3</p> A 51 23 000 A 51 23 008	
<p>a = 19.5 b = 31.0 c = 16.5</p> A 42 31 000 A 42 31 002 A 42 31 008	<p>a = 40.0 b = 16.5 c = 1.6</p>	<p>A 73 31 000 A 73 31 010</p>	<p>a = 49.9 b = 16.5 c = 1.5</p> A 44 31 010 A 44 31 060		<p>a = 31.1 b = 28.0 c = 15.5 d = 3.3 e = 4.8</p> A 51 31 000 A 51 31 008	

descriptions of standard colours see **page 199**

ROUND KNOB		SPINDLE-SHAPED KNOB				COVER			
ABS (UL 94 HB)				ABS (UL 94 HB) ...100 = indicator line white, otherwise in black					
Knob ø	Shape	Borehole D					without indicator line	with indicator line	
40	ROUND KNOB 	6 mm, without chamfer	A 25 40 060	A 26 40 060	A 25 40 068	A 26 40 068	a = 37.4 b = 34.4 c = 12.5	● A 41 40 000 ● A 41 40 002 ● A 41 40 007 ● A 41 40 008	A 41 40 100
		8 mm, without chamfer	A 25 40 080						
50	SPINDLE-SHAPED KNOB 	6 mm, with chamfer		A 24 40 060		A 24 40 068	a = 37.9 b = 1.6 c = 13.0	● A 50 40 000 ● A 50 40 008	A 50 40 100 A 50 40 108
		ROUND KNOB 	6 mm, without chamfer	A 25 50 060	A 26 50 060	A 25 50 068		a = 47.4 b = 44.4 c = 14.5	● A 41 50 000 ● A 41 50 008

ACCESSORIES FOR ROUND KNOBS / WING KNOBS AND SPINDLE-SHAPED KNOBS / COM-KNOBS

Article	Version / Application	Dim. in mm	Part-No.												
	Locking device with stator For round knobs and wing knobs size 16 with dial only. Transparent, marking black.		A 61 16 010												
	Locking device For universal use of round knobs, wing knobs and COM-KNOBS with dial.		A 61 00 000												
	Adjusting key For correct adjusting of combination knobs (round knobs) with indicator line, dial and arrow disk. Knob mounting without difficulties.		Round knobs ø <table border="1"> <tr> <td>D₁</td> <td>D₂</td> <td>D₃</td> <td></td> </tr> <tr> <td>10</td> <td>13.5</td> <td>16</td> <td>A 64 02 005</td> </tr> <tr> <td>20</td> <td>23</td> <td>31</td> <td>A 64 03 005</td> </tr> </table>	D ₁	D ₂	D ₃		10	13.5	16	A 64 02 005	20	23	31	A 64 03 005
D ₁	D ₂	D ₃													
10	13.5	16	A 64 02 005												
20	23	31	A 64 03 005												

ARROW DISK	DISK	NUT COVER
<p>ABS (UL 94 HB)</p> 	<p>ABS ...010 = indicator line white</p> 	<p>ABS</p> 
<p>a = 24.5 b = 40.0 c = 25.0</p>  <p>A 42 40 000 A 42 40 008</p>	<p>a = 50.1 b = 24.0 c = 1.8</p>  <p>A 73 40 010</p>	<p>a = 40.3 b = 36.8 c = 20.0 d = 3.1 e = 4.6</p>  <p>A 51 40 000</p>

Standard colours knobs


Combination knobs

Black, RAL 9005 


Dust grey, RAL 7037 

Covers (depends on size/type)

Black, RAL 9005 

Red, RAL F12/0-10 

Yellow, RAL F12/0-1 

Green, RAL F12/0-43 


Blue, RAL 5012 

Pebble grey, RAL 7032 

Dust grey, RAL 7037 


Arrow disk

Black, RAL 9005 


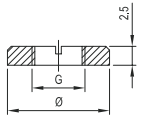


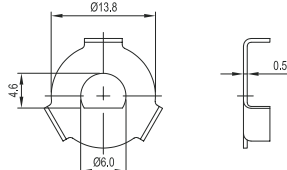
Red, RAL F12/0-10 

Dust grey, RAL 7037 

Dial

Transparent, bright surface
with/without symbols 

ACCESSORIES FOR ROUND KNOBS / WING KNOBS AND SPINDLE-SHAPED KNOBS / COM-KNOBS

Article	Version / Application	Dim. in mm	Part-No.												
	<p>Round nut</p> <p>For mounting of potentiometer at front panels. It fits under knob and nut cover (round knobs / wing knobs / spindle-shaped knobs / COM-KNOBS \varnothing 10 / 13.5 / 16 / 20 / 23 / 31 / 40 / 50).</p>		<table border="1"> <thead> <tr> <th>G</th> <th>Ø</th> <th>Part-No.</th> </tr> </thead> <tbody> <tr> <td>M7 x 0.75</td> <td>13.5</td> <td>A 62 07 009</td> </tr> <tr> <td>M10 x 0.75</td> <td>12.5</td> <td>A 62 10 009</td> </tr> <tr> <td>3/8" - 32G</td> <td>12.5</td> <td>A 62 95 009</td> </tr> </tbody> </table>	G	Ø	Part-No.	M7 x 0.75	13.5	A 62 07 009	M10 x 0.75	12.5	A 62 10 009	3/8" - 32G	12.5	A 62 95 009
G	Ø	Part-No.													
M7 x 0.75	13.5	A 62 07 009													
M10 x 0.75	12.5	A 62 10 009													
3/8" - 32G	12.5	A 62 95 009													
	<p>Spanner</p> <p>For tightening round nuts.</p>		A 63 00 000												
	<p>Torsion protection</p> <p>For torsion-proved mounting of knobs on profiled axes 6 / 4.6 mm. Suitable for round and wing knobs sizes \varnothing 20 to 50 with 6 mm borehole (not suitable for COM-KNOBS).</p>		<p>Bore</p> <table border="1"> <thead> <tr> <th>Bore</th> <th>Part-No.</th> </tr> </thead> <tbody> <tr> <td>6 / 4.6</td> <td>A 66 00 064</td> </tr> </tbody> </table>	Bore	Part-No.	6 / 4.6	A 66 00 064								
Bore	Part-No.														
6 / 4.6	A 66 00 064														

X-ON Electronics

Largest Supplier of Electrical and Electronic Components

Click to view similar products for [Knobs & Dials](#) category:

Click to view products by [OKW ENCLOSURES](#) manufacturer:

Other Similar products are found below :

[61-9028.20](#) [61-9028.9](#) [8529](#) [8573](#) [9-1437622-4](#) [11K5015-EMNB](#) [11K5019-ECNB](#) [11K5020-KLAB](#) [11K5028-JMNG](#) [11K5048-KMNB](#)
[11K5014-EMNB](#) [11K5015-EMNG](#) [11K5019-EMNB](#) [11K5029-KMNG](#) [P400S-08-D6-N](#) [K6510](#) [KNSL500B1/8](#) [AL811BA18](#) [420031B18](#)
[5006](#) [KB700BA1/4](#) [KS700B14](#) [411](#) [4-1437621-3](#) [420065A14AL](#) [5149A](#) [028-1-11](#) [52-928.20](#) [52-928.60](#) [52-928.9](#) [8517](#) [8546](#) [8570](#) [8572](#)
[H-516-3A](#) [P861H-0X-S6](#) [8544](#) [11K5014-JMNG](#) [11K5014-KMNG](#) [11K5014-ECNG](#) [5700E](#) [KA500B18](#) [KFS600B14](#) [KN900AB14](#)
[KFS500B14](#) [KNS501B18](#) [PKD60B1018](#) [PK1100B18](#) [PKES140B14](#) [PKES150B14](#)