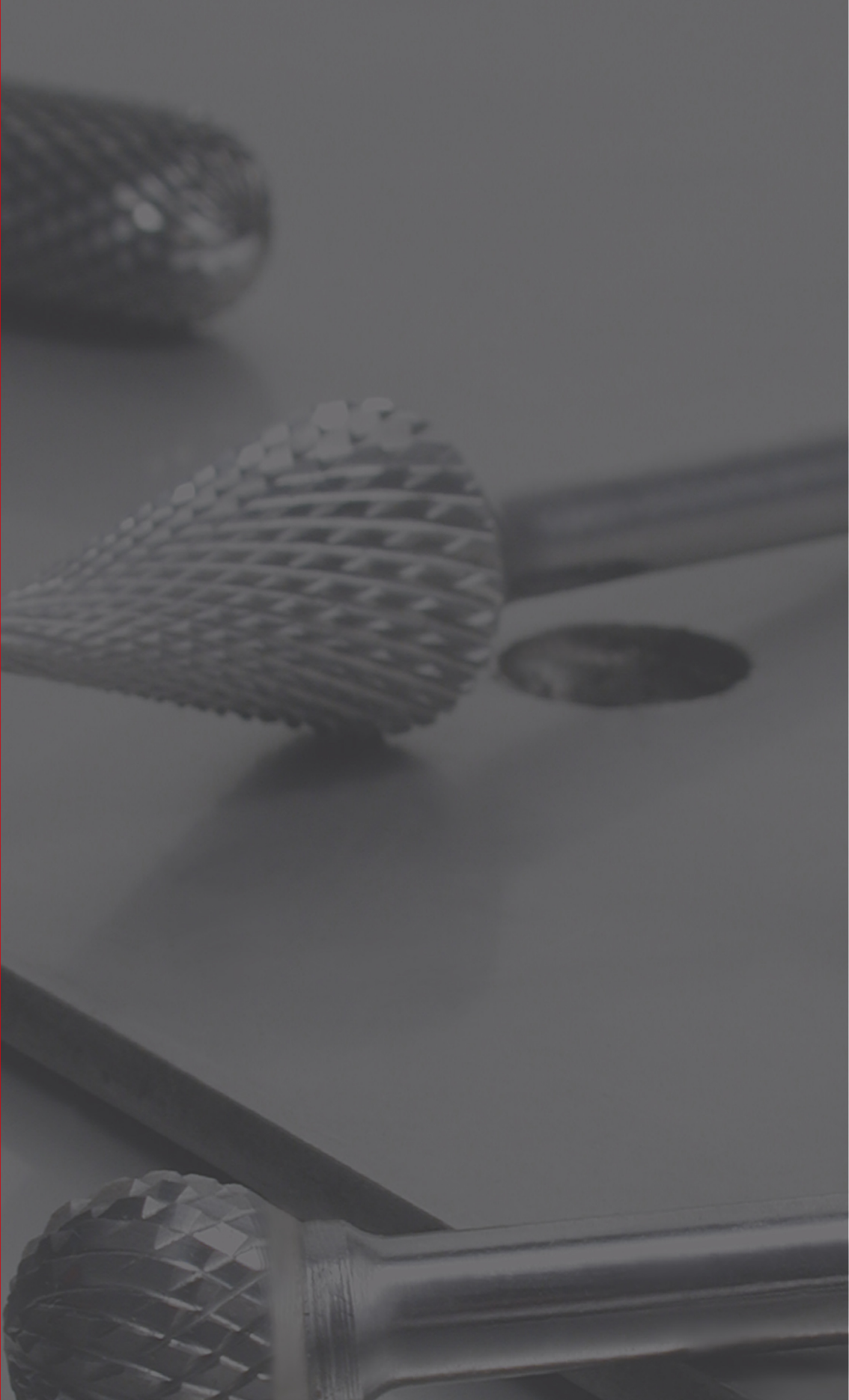




ROTARY BURRS



Product information

| | | | | | |
|------------------------|----------|--|--|--|--|
| DIN 8033 ZYA | A | | Shape A cylinder (ZYA) without end tothing | | |
| DIN 8033 ZYA | A | | Shape A cylinder (ZYA) with end tothing | | |
| DIN 8033 WCR | C | | Shape C oval (WRC) | | |
| DIN 8033 KUD | D | | Shape D ball type (KUD) | | |
| DIN 8033 TRE | E | | Shape E tear drop (TRE) | | |
| DIN 8033 RBF | F | | Shape F ball nose tree (RBF) | | |
| DIN 8033 SPG | G | | Shape G tree (SPG) | | |
| DIN 8033 - | H | | Shape H flame (FLH) | | |
| DIN 8033 KSJ | J | | Shape J cone 60° (KSJ) | | |
| DIN 8033 KSK | K | | Shape K cone 90° (KSK) | | |
| DIN 8033 KEL | L | | Shape L round cone (KEL) | | |
| DIN 8033 SKM | M | | Shape M cone (SKM) | | |
| DIN 8033 WKN | N | | Shape N angle (WKN) | | |

Product information

The high-performance tungsten carbide rotary burrs provide maximum cutting edge stability with a simultaneous high tenacity of the cutting edge.

Tungsten carbide rotary burrs Alu

High-performance tungsten carbide rotary burrs with aluminium tothing.

Fields of application: non-ferrous metals, aluminium, brass, copper, zinc, diecasts and plastics. To debur, break edges, trim and surface processing.

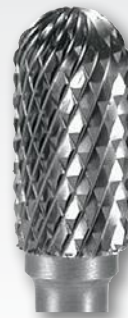


Tungsten carbide rotary burrs TC

High-performance tungsten carbide rotary burrs with cross tothing.

The cross tothing provides a higher cutting capacity compared with the simple tothing. This particularly has a positive effect on materials which are difficult to cut.

Fields of application: for high-alloy steels, non-rusting steels, acid-resistant steels, heat-resistant steels, diecasts and plastics. To debur, break edges, trim, process welding seams, surface processing.



Tungsten carbide rotary burrs TiCN

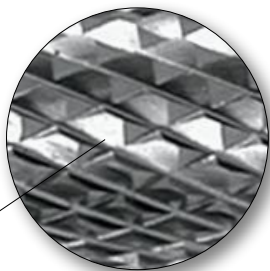
Like tungsten carbide rotary burrs TC with titanium carbon nitride coating.

The TiCN wear-resistant coating increases the surface hardness of the tool to approx. 3,000 HV / micro-hardness and the heat resistance to 400° C. This increases service life and productivity.

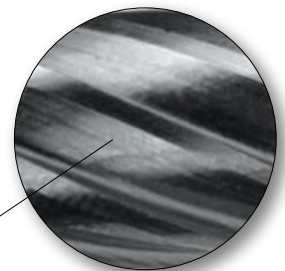
Fields of application: for high-alloy steels, non-rusting steels, acid-resistant steels, heat-resistant steels, diecasts and plastics. To debur, break edges, trim, process welding seams, surface processing.



Cutting



With cross tothing



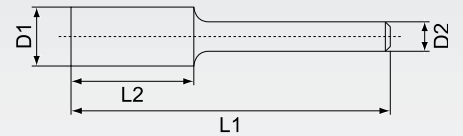
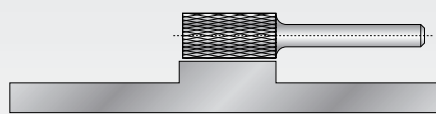
With aluminium tothing

Tungsten carbide rotary burrs TC / TiCN shape A cylinder (ZYA) without end toothing

Finish: shape A cylinder (ZYA) without end toothing
Cutting: cross toothing
Toothing: CT 4
Surface: bright / titanium carbon nitride coating



Packing unit:
each in plastic packaging



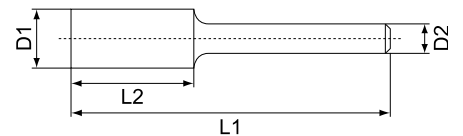
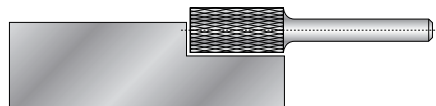
| Ø-D1 mm | L2 mm | Total length L1 min. mm | Shank-Ø D2 mm | Article no. | Article no. | Article no. |
|------------|----------|----------------------------|------------------|-------------|-------------|-------------|
| | | | | Alu | TC | TiCN |
| 3,0 | 14,0 | 38,0 | 3,0 | — | 116 046 | — |
| 6,0 | 18,0 | 58,0 | 6,0 | — | 116 010 | 116 010 TC |
| 8,0 | 18,0 | 60,0 | 6,0 | — | 116 011 | 116 011 TC |
| 10,0 | 20,0 | 60,0 | 6,0 | — | 116 012 | 116 012 TC |
| 12,0 | 25,0 | 65,0 | 6,0 | — | 116 013 | 116 013 TC |
| 16,0 | 25,0 | 65,0 | 6,0 | — | 116 014 | 116 014 TC |

Tungsten carbide rotary burrs Alu / TC / TiCN shape A cylinder (ZYA) with end toothing

Finish: shape A cylinder (ZYA) with end toothing
Cutting: cross toothing / aluminium toothing
Toothing: CT 4 / aluminium
Surface: bright / titanium carbon nitride coating



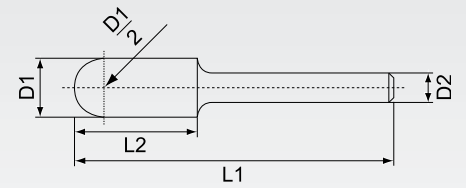
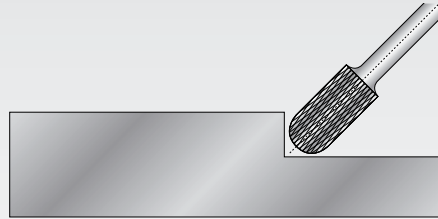
Packing unit:
each in plastic packaging



| Ø-D1 mm | L2 mm | Total length L1 min. mm | Shank-Ø D2 mm | Article no. | Article no. | Article no. |
|------------|----------|----------------------------|------------------|-------------|-------------|-------------|
| | | | | Alu | TC | TiCN |
| 3,0 | 14,0 | 38,0 | 3,0 | — | 116 047 | — |
| 6,0 | 18,0 | 58,0 | 6,0 | 116 015 A | 116 015 | 116 015 TC |
| 8,0 | 18,0 | 60,0 | 6,0 | — | 116 016 | 116 016 TC |
| 10,0 | 20,0 | 60,0 | 6,0 | — | 116 017 | 116 017 TC |
| 12,0 | 25,0 | 65,0 | 6,0 | 116 018 A | 116 018 | 116 018 TC |
| 16,0 | 25,0 | 65,0 | 6,0 | — | 116 019 | 116 019 TC |

Tungsten carbide rotary burrs Alu / TC / TiCN shape C oval (WRC)

Finish: shape C oval (WRC)
Cutting: cross tothing / aluminium tothing
Tothing: CT 4 / aluminium
Surface: bright / titanium carbon nitride coating

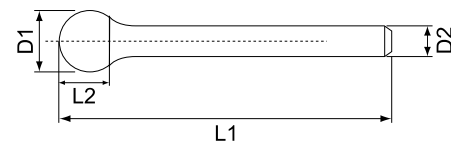
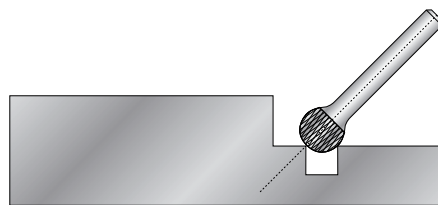


Packing unit:
each in plastic packaging

| Ø-D1 mm | L2 mm | Total length L1 min. mm | Shank-Ø D2 mm | Article no. | Article no. | Article no. |
|------------|----------|----------------------------|------------------|-------------|-------------|-------------|
| | | | | Alu | TC | TiCN |
| 3,0 | 14,0 | 38,0 | 3,0 | — | 116 048 | — |
| 6,0 | 18,0 | 56,0 | 6,0 | 116 020 A | 116 020 | 116 020 TC |
| 8,0 | 18,0 | 60,0 | 6,0 | — | 116 021 | 116 021 TC |
| 10,0 | 20,0 | 60,0 | 6,0 | — | 116 022 | 116 022 TC |
| 12,0 | 25,0 | 65,0 | 6,0 | 116 023 A | 116 023 | 116 023 TC |
| 16,0 | 25,0 | 65,0 | 6,0 | — | 116 024 | 116 024 TC |

Tungsten carbide rotary burrs Alu / TC / TiCN shape D ball type (KUD)

Finish: shape D ball type (KUD)
Cutting: cross tothing / aluminium tothing
Tothing: CT 4 / aluminium
Surface: bright / titanium carbon nitride coating



Packing unit:
each in plastic packaging

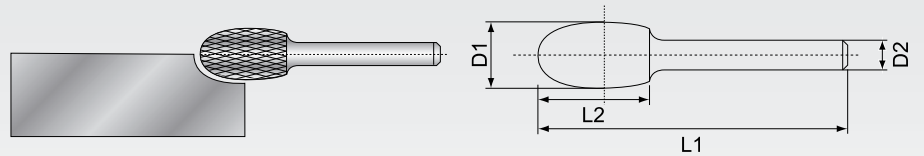
| Ø-D1 mm | L2 mm | Total length L1 min. mm | Shank-Ø D2 mm | Article no. | Article no. | Article no. |
|------------|----------|----------------------------|------------------|-------------|-------------|-------------|
| | | | | Alu | TC | TiCN |
| 3,0 | 2,7 | 38,0 | 3,0 | — | 116 052 | — |
| 6,0 | 5,0 | 56,0 | 6,0 | 116 041 A | 116 041 | 116 041 TC |
| 8,0 | 7,0 | 47,0 | 6,0 | — | 116 042 | 116 042 TC |
| 10,0 | 9,0 | 49,0 | 6,0 | — | 116 043 | 116 043 TC |
| 12,0 | 11,0 | 51,0 | 6,0 | 116 044 A | 116 044 | 116 044 TC |
| 16,0 | 15,0 | 54,0 | 6,0 | — | 116 045 | 116 045 TC |

Tungsten carbide rotary burrs TC / TiCN shape E tear drop (TRE)

Finish: shape E tear drop (TRE)
Cutting: cross tothing
Toothing: CT 4
Surface: bright / titanium carbon nitride coating



Packing unit:
each in plastic packaging



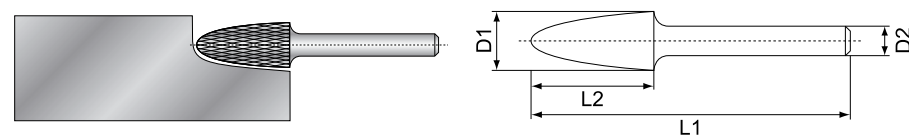
| Ø-D1 mm | L2 mm | Total length L1 min. mm | Shank-Ø D2 mm | Article no. | Article no. | Article no. |
|------------|----------|----------------------------|------------------|-------------|-------------|-------------|
| | | | | Alu | TC | TiCN |
| 3,0 | 6,0 | 38,0 | 3,0 | — | 116 210 | — |
| 6,0 | 10,0 | 50,0 | 6,0 | — | 116 211 | 116 211 TC |
| 8,0 | 15,0 | 60,0 | 6,0 | — | 116 212 | 116 212 TC |
| 10,0 | 16,0 | 60,0 | 6,0 | — | 116 213 | 116 213 TC |
| 12,0 | 22,0 | 67,0 | 6,0 | — | 116 214 | 116 214 TC |
| 16,0 | 25,0 | 70,0 | 6,0 | — | 116 215 | 116 215 TC |

Tungsten carbide rotary burrs Alu / TC / TiCN shape F ball nose tree (RBF)

Finish: shape F ball nose tree (RBF)
Cutting: cross tothing / aluminium tothing
Toothing: CT 4 / aluminium
Surface: bright / titanium carbon nitride coating



Packing unit:
each in plastic packaging



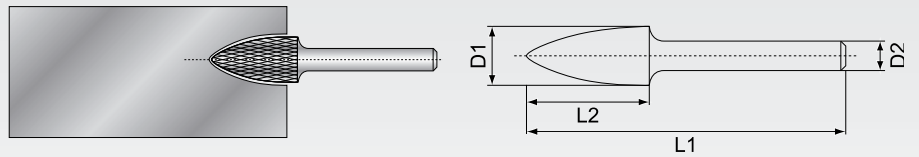
| Ø-D1 mm | L2 mm | Total length L1 min. mm | Shank-Ø D2 mm | Article no. | Article no. | Article no. |
|------------|----------|----------------------------|------------------|-------------|-------------|-------------|
| | | | | Alu | TC | TiCN |
| 3,0 | 13,0 | 38,0 | 3,0 | — | 116 050 | — |
| 6,0 | 18,0 | 58,0 | 6,0 | 116 030 A | 116 030 | 116 030 TC |
| 8,0 | 18,0 | 60,0 | 6,0 | — | 116 031 | 116 031 TC |
| 10,0 | 20,0 | 60,0 | 6,0 | — | 116 032 | 116 032 TC |
| 12,0 | 25,0 | 65,0 | 6,0 | 116 033 A | 116 033 | 116 033 TC |
| 16,0 | 25,0 | 70,0 | 6,0 | — | 116 034 | 116 034 TC |

Tungsten carbide rotary burrs Alu / TC / TiCN shape G tree (SPG)

Finish: shape G tree (SPG)
Cutting: cross toothing / aluminium toothing
Toothing: CT 4 / aluminium
Surface: bright / titanium carbon nitride coating



Packing unit:
each in plastic packaging



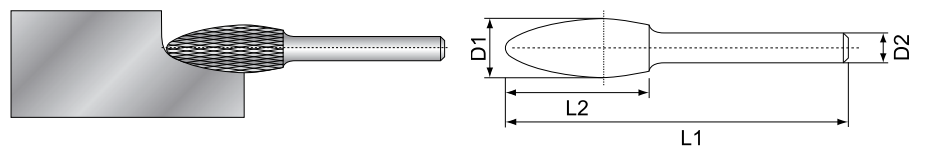
| Ø-D1 mm | L2 mm | Total length L1 min. mm | Shank-Ø D2 mm | Article no. Alu | Article no. TC | Article no. TiCN |
|------------|----------|----------------------------|------------------|--------------------|-------------------|---------------------|
| 3,0 | 13,0 | 38,0 | 3,0 | — | 116 049 | — |
| 6,0 | 18,0 | 58,0 | 6,0 | 116 025 A | 116 025 | 116 025 TC |
| 8,0 | 18,0 | 60,0 | 6,0 | — | 116 026 | 116 026 TC |
| 10,0 | 20,0 | 60,0 | 6,0 | — | 116 027 | 116 027 TC |
| 12,0 | 25,0 | 65,0 | 6,0 | 116 028 A | 116 028 | 116 028 TC |
| 16,0 | 25,0 | 70,0 | 6,0 | — | 116 029 | 116 029 TC |

Tungsten carbide rotary burrs TC / TiCN shape H flame (FLH)

Finish: shape H flame (FLH)
Cutting: cross toothing
Toothing: CT 4
Surface: bright / titanium carbon nitride coating



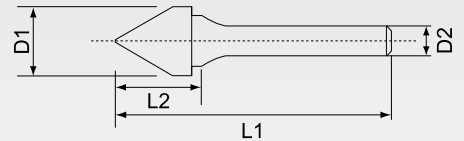
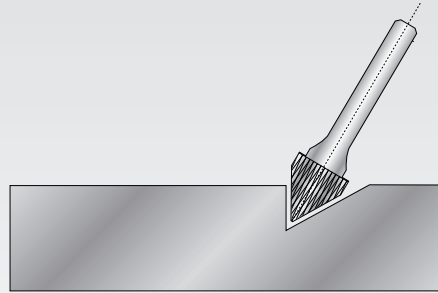
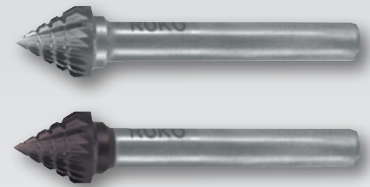
Packing unit:
each in plastic packaging



| Ø-D1 mm | L2 mm | Total length L1 min. mm | Shank-Ø D2 mm | Article no. Alu | Article no. TC | Article no. TiCN |
|------------|----------|----------------------------|------------------|--------------------|-------------------|---------------------|
| 3,0 | 6,0 | 38,0 | 3,0 | — | 116 216 | — |
| 6,0 | 14,0 | 50,0 | 6,0 | — | 116 217 | 116 217 TC |
| 8,0 | 20,0 | 65,0 | 6,0 | — | 116 218 | 116 218 TC |
| 10,0 | 20,0 | 65,0 | 6,0 | — | 116 219 | 116 219 TC |
| 12,0 | 32,0 | 77,0 | 6,0 | — | 116 220 | 116 220 TC |
| 16,0 | 36,0 | 82,0 | 6,0 | — | 116 221 | 116 221 TC |

Tungsten carbide rotary burrs TC / TiCN shape J cone 60° (KSJ)

Finish: shape J cone 60° (KSJ)
Cutting: cross tothing
Toothing: CT 4
Surface: bright / titanium carbon nitride coating



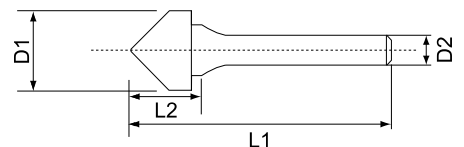
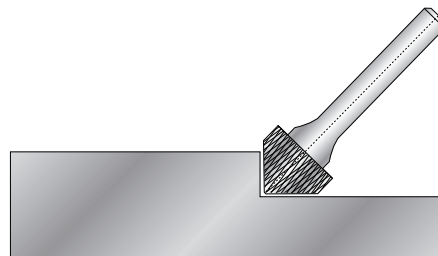
Packing unit:
each in plastic packaging

| Ø-D1 mm | L2 mm | Total length L1 min. mm | Shank-Ø D2 mm | Article no. Alu | Article no. TC | Article no. TiCN |
|------------|----------|----------------------------|------------------|---------------------------|--------------------------|----------------------------|
| 3,0 | 3,0 | 38,0 | 3,0 | — | 116 222 | — |
| 6,0 | 6,0 | 50,0 | 6,0 | — | 116 223 | 116 223 TC |
| 10,0 | 8,0 | 56,0 | 6,0 | — | 116 224 | 116 224 TC |
| 12,0 | 11,0 | 60,0 | 6,0 | — | 116 225 | 116 225 TC |
| 16,0 | 14,5 | 62,0 | 6,0 | — | 116 226 | 116 226 TC |

1.08

Tungsten carbide rotary burrs TC / TiCN shape K cone 90° (KSK)

Finish: shape K cone 90° (KSK)
Cutting: cross tothing
Toothing: CT 4
Surface: bright / titanium carbon nitride coating



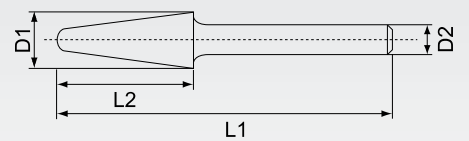
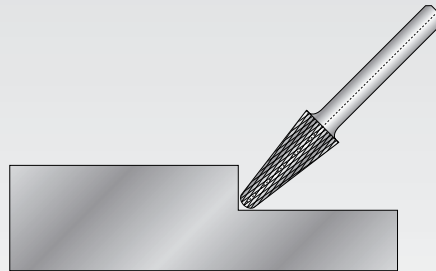
Packing unit:
each in plastic packaging

| Ø-D1 mm | L2 mm | Total length L1 min. mm | Shank-Ø D2 mm | Article no. Alu | Article no. TC | Article no. TiCN |
|------------|----------|----------------------------|------------------|---------------------------|--------------------------|----------------------------|
| 3,0 | 3,0 | 38,0 | 3,0 | — | 116 227 | — |
| 6,0 | 3,0 | 50,0 | 6,0 | — | 116 228 | 116 228 TC |
| 10,0 | 5,0 | 53,0 | 6,0 | — | 116 229 | 116 229 TC |
| 12,0 | 7,0 | 55,0 | 6,0 | — | 116 230 | 116 230 TC |
| 16,0 | 8,0 | 57,0 | 6,0 | — | 116 231 | 116 231 TC |



Tungsten carbide rotary burrs Alu / TC / TiCN shape L round cone (KEL)

Finish: shape L round cone (KEL)
Cutting: cross toothing / aluminium toothing
Toothing: CT 4 / aluminium
Surface: bright / titanium carbon nitride coating

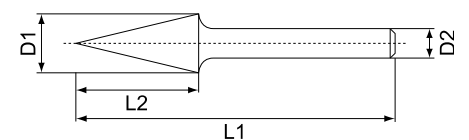
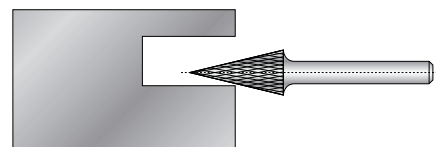


Packing unit:
each in plastic packaging

| Ø-D1 mm | L2 mm | Total length L1 min. mm | Shank-Ø D2 mm | Article no. Alu | Article no. TC | Article no. TiCN |
|------------|----------|----------------------------|------------------|--------------------|-------------------|---------------------|
| 3,0 | 14,0 | 38,0 | 3,0 | — | 116 232 | — |
| 6,0 | 18,0 | 50,0 | 6,0 | 116 233 A | 116 233 | 116 233 TC |
| 8,0 | 25,0 | 70,0 | 6,0 | — | 116 234 | 116 234 TC |
| 10,0 | 20,0 | 65,0 | 6,0 | 116 235 A | 116 235 | 116 235 TC |
| 12,0 | 32,0 | 77,0 | 6,0 | 116 236 A | 116 236 | 116 236 TC |
| 16,0 | 33,0 | 78,0 | 6,0 | 116 237 A | 116 237 | 116 237 TC |

Tungsten carbide rotary burrs TC / TiCN shape M cone (SKM)

Finish: shape M cone (SKM)
Cutting: cross toothing
Toothing: CT 4
Surface: bright / titanium carbon nitride coating



Packing unit:
each in plastic packaging

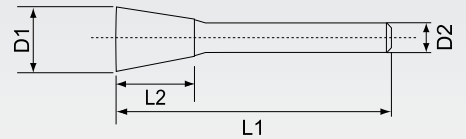
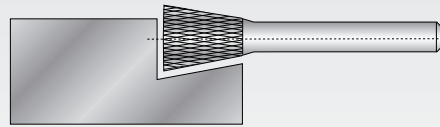
| Ø-D1 mm | L2 mm | Total length L1 min. mm | Shank-Ø D2 mm | Article no. Alu | Article no. TC | Article no. TiCN |
|------------|----------|----------------------------|------------------|--------------------|-------------------|---------------------|
| 3,0 | 11,0 | 38,0 | 3,0 | — | 116 051 | — |
| 6,0 | 18,0 | 58,0 | 6,0 | — | 116 035 | 116 035 TC |
| 8,0 | 18,0 | 60,0 | 6,0 | — | 116 036 | 116 036 TC |
| 10,0 | 20,0 | 60,0 | 6,0 | — | 116 037 | 116 037 TC |
| 12,0 | 25,0 | 65,0 | 6,0 | — | 116 038 | 116 038 TC |
| 16,0 | 25,0 | 70,0 | 6,0 | — | 116 039 | 116 039 TC |

Tungsten carbide rotary burrs TC / TiCN shape N angle (WKN)

Finish: shape N angle (WKN)
Cutting: cross tothing
Toothing: CT 4
Surface: bright / titanium carbon nitride coating



Packing unit:
each in plastic packaging



| Ø-D1 mm | L2 mm | Total length L1 min. mm | Shank-Ø D2 mm | Article no. Alu | Article no. TC | Article no. TiCN |
|------------|----------|----------------------------|------------------|---------------------------|--------------------------|----------------------------|
| 3,0 | 5,0 | 38,0 | 3,0 | — | 116 238 | — |
| 6,0 | 8,0 | 50,0 | 6,0 | — | 116 239 | 116 239 TC |
| 10,0 | 10,0 | 55,0 | 6,0 | — | 116 240 | 116 240 TC |
| 12,0 | 13,0 | 58,0 | 6,0 | — | 116 241 | 116 241 TC |
| 16,0 | 19,0 | 64,0 | 6,0 | — | 116 242 | 116 242 TC |

Sets of tungsten carbide rotary burrs Alu / TC / TiCN in steel case

| Description | Article no. |
|--|-------------|
| 10-piece set of tungsten carbide rotary burrs TC 2 x shape A, cylinder (ZYA) without end tothing Ø D1 10,0 / 12,0 mm 2 x shape C, oval (WRC) Ø D1 10,0 / 12,0 mm 2 x shape G, tree (SPG) Ø D1 10,0 / 12,0 mm 2 x shape F, ball nose tree (RBF) Ø D1 10,0 / 12,0 mm 1 x shape M, cone (SKM) Ø D1 12,0 mm 1 x shape D, ball type (KUD) Ø D1 12,0 mm | 116 003 |
| 10-piece set of tungsten carbide rotary burrs TiCN 2 x shape A, cylinder (ZYA) without end tothing Ø D1 10,0 / 12,0 mm 2 x shape C, oval (WRC) Ø D1 10,0 / 12,0 mm 2 x shape G, tree (SPG) Ø D1 10,0 / 12,0 mm 2 x shape F, ball nose tree (RBF) Ø D1 10,0 / 12,0 mm 1 x shape M, cone (SKM) Ø D1 12,0 mm 1 x shape D, ball type (KUD) Ø D1 12,0 mm | 116 003 TC |
| 10-piece set of tungsten carbide rotary burrs ALU 2 x shape A, cylinder (ZYA) with end tothing Ø D1 6,0 / 12,0 mm 2 x shape C, oval (WRC) Ø D1 6,0 / 12,0 mm 2 x shape G, tree (SPG) Ø D1 6,0 / 12,0 mm 2 x shape F, ball nose tree (RBF) Ø D1 6,0 / 12,0 mm 2 x shape D, ball type (KUD) Ø D1 6,0 / 12,0 mm | 116 103 A |



No. 116 003



No. 116 003 TC

Sets of tungsten carbide rotary burrs Alu / TC / TiCN in polystyrene case

| Description | Article no. |
|--|--------------|
| 10-piece set of tungsten carbide rotary burrs TC 2 x shape A, cylinder (ZYA) without end tothing Ø D1 10,0 / 12,0 mm 2 x shape C, oval (WRC) Ø D1 10,0 / 12,0 mm 2 x shape G, tree (SPG) Ø D1 10,0 / 12,0 mm 2 x shape F, ball nose tree (RBF) Ø D1 10,0 / 12,0 mm 1 x shape M, cone (SKM) Ø D1 12,0 mm 1 x shape D, ball type (KUD) Ø D1 12,0 mm | 116 003 RO |
| 10-piece set of tungsten carbide rotary burrs TiCN 2 x shape A, cylinder (ZYA) without end tothing Ø D1 10,0 / 12,0 mm 2 x shape C, oval (WRC) Ø D1 10,0 / 12,0 mm 2 x shape G, tree (SPG) Ø D1 10,0 / 12,0 mm 2 x shape F, ball nose tree (RBF) Ø D1 10,0 / 12,0 mm 1 x shape M, cone (SKM) Ø D1 12,0 mm 1 x shape D, ball type (KUD) Ø D1 12,0 mm | 116 003 TCRO |
| 10-piece set of tungsten carbide rotary burrs ALU 2 x shape A, cylinder (ZYA) with end tothing Ø D1 6,0 / 12,0 mm 2 x shape C, oval (WRC) Ø D1 6,0 / 12,0 mm 2 x shape G, tree (SPG) Ø D1 6,0 / 12,0 mm 2 x shape F, ball nose tree (RBF) Ø D1 6,0 / 12,0 mm 2 x shape D, ball type (KUD) Ø D1 6,0 / 12,0 mm | 116 103 ARO |



No. 116 003 RO



No. 116 003 TCRO

Sets of tungsten carbide rotary burrs TC / TiCN in a convenient table display

| Description | Article no. |
|--|-------------|
| 35-piece set of tungsten carbide rotary burrs TC in a convenient table display each 1 x Ø D1 6,0 mm + 8,0 mm + 10,0 mm + 12,0 mm + 16,0 mm 5 TC rotary burrs shape A, cylinder (ZYA) with end tothing 5 TC rotary burrs shape A, cylinder (ZYA) without end tothing 5 TC rotary burrs shape C, oval (WRC) 5 TC rotary burrs shape G, tree (SPG) 5 TC rotary burrs shape F, ball nose tree (RBF) 5 TC rotary burrs shape M, cone (SKM) 5 TC rotary burrs shape D, ball type (KUD) | 116 008 |
| 35-piece set of tungsten carbide rotary burrs TiCN in a convenient table display each 1 x Ø D1 6,0 mm + 8,0 mm + 10,0 mm + 12,0 mm + 16,0 mm 5 TC rotary burrs shape A, cylinder (ZYA) with end tothing 5 TC rotary burrs shape A, cylinder (ZYA) without end tothing 5 TC rotary burrs shape C, oval (WRC) 5 TC rotary burrs shape G, tree (SPG) 5 TC rotary burrs shape F, ball nose tree (RBF) 5 TC rotary burrs shape M, cone (SKM) 5 TC rotary burrs shape D, ball type (KUD) | 116 008 TC |



No. 116 103 ARO



No. 116 008

Product information

Compressed air grinder

- Handle 360° air exhaust
- Cushion rubber grip
- Power regulator



Compressed air grinder – short version

| | | | |
|---------------------|---------------|-----------------------------|----------|
| Rotation speed: | 25.000 r.p.m. | Noise level: | 77 dBA |
| Ø- Air consumption: | 113 L/Min | Rec. air pressure: | 6,2 bar |
| Total length: | 156,0 mm | Compressed air tool holder: | G 1/4" |
| Wight: | 0,57 kg | Collet size rotary burrs: | Ø 6,0 mm |

Packing unit:
each in plastic packaging

| Description | Article no. |
|--|------------------|
| Compressed air grinder – short version | 116 100 L |



Compressed air grinder with 90° angled head

| | | | |
|---------------------|---------------|-----------------------------|----------|
| Rotation speed: | 20.000 r.p.m. | Noise level: | 77 dBA |
| Ø- air consumption: | 113 L/Min | Rec. air pressure: | 6,2 bar |
| Total length: | 170,0 mm | Compressed air tool holder: | G 1/4" |
| Wight: | 0,60 kg | Collet size rotary burrs: | Ø 6,0 mm |

Packing unit:
each in plastic packaging

| Description | Article no. |
|---|------------------|
| Compressed air grinder with 90° angled head | 116 110 L |



1.08

Compressed air grinder with 115° angled head

Rotation speed: 20.000 r.p.m. Noise level: 77 dBA
 Ø- air consumption: 113 L/Min Rec. air pressure: 6,2 bar
 Total length: 201,0 mm Compressed air tool holder: G 1/4"
 Weight: 0,70 kg Collet size rotary burrs: Ø 6,0 mm

Packing unit:
each in plastic packaging

| Description | Article no. |
|--|------------------|
| Compressed air grinder with 115° angled head | 116 120 L |



Compressed air grinder – long version

Rotation speed: 25.000 r.p.m. Noise level: 77 dBA
 Ø- air consumption: 113 L/Min Rec. air pressure: 6,2 bar
 Total length: 251,0 mm Compressed air tool holder: G 1/4"
 Weight: 0,90 kg Collet size rotary burrs: Ø 6,0 mm

Packing unit:
each in plastic packaging

| Description | Article no. |
|---------------------------------------|------------------|
| Compressed air grinder - long version | 116 130 L |



Compressed air grinder set with coupling plug incl. set of rotary burrs TC in plastic case

| Description | Article no. |
|--|-------------|
| 12-piece set of compressed air grinder 1 Compressed air grinder + Set of tungsten carbide rotary burrs in mini-box, 10 pcs. each 1x Ø D1 6,0 + 12,0 mm 2 TC rotary burrs shape A, cylinder (ZYA) with end tothing 2 TC rotary burrs shape C, oval (WRC) 2 TC rotary burrs shape G, tree (SPG) 2 TC rotary burrs shape F, ball nose tree (RBF) 2 TC rotary burrs shape D, ball type (KUD) + Coupling plug for compressed air grinder | 116 100 |
| 5-piece set of compressed air grinder 1 Compressed air grinder + Set of tungsten carbide rotary burrs in mini-box, 3 pcs. each 1x Ø D1 6,0 + 12,0 mm 1 TC rotary burr shape A, cylinder (ZYA) with end tothing 1 TC rotary burr shape G, pionted arch (SPG) 1 TC rotary burr shape D, cone (KUD) + Coupling plug for compressed air grinder | 116 113 |



No. 116 100



No. 116 002

Set of tungsten carbide rotary burrs in mini-box

| | |
|---|---------|
| 3-piece set of tungsten carbide rotary burrs in mini-box each 1 x Ø D1 10,0 mm 1 TC rotary burr shape A, cylinder (ZYA) with end tothing 1 TC rotary burr shape G, pionted arch (SPG) 1 TC rotary burr shape D, cone (KUD) | 116 001 |
| 10-piece set of tungsten carbide rotary burrs in mini-box each 1 x Ø D1 6,0 mm + Ø D1 12,0 mm 2 TC rotary burrs shape A, cylinder (ZYA) with end tothing 2 TC rotary burrs shape C, oval (WRC) 2 TC rotary burrs shape G, tree (SPG) 2 TC rotary burrs shape F, ball nose tree (RBF) 2 TC rotary burrs shape D, ball type (KUD) | 116 002 |



No. 116 100-1

Accessories for compressed air grinder set

Packing unit:
each in plastic packaging

| Description | Article no. |
|--|-------------|
| Compressed air grinder solo 116 100 L + Coupling plug 116 101 L | 116 100 S |
| Rotor replacement for compressed air grinder | 116 100-1 |
| Coupling plug, nominal size 7,2 mm, external thread G 1/4" | 116 101 L |
| Collet 3,0 mm for compressed air grinder | 116 121 |
| Collet 1/4" for compressed air grinder | 116 119 |



No. 116 121

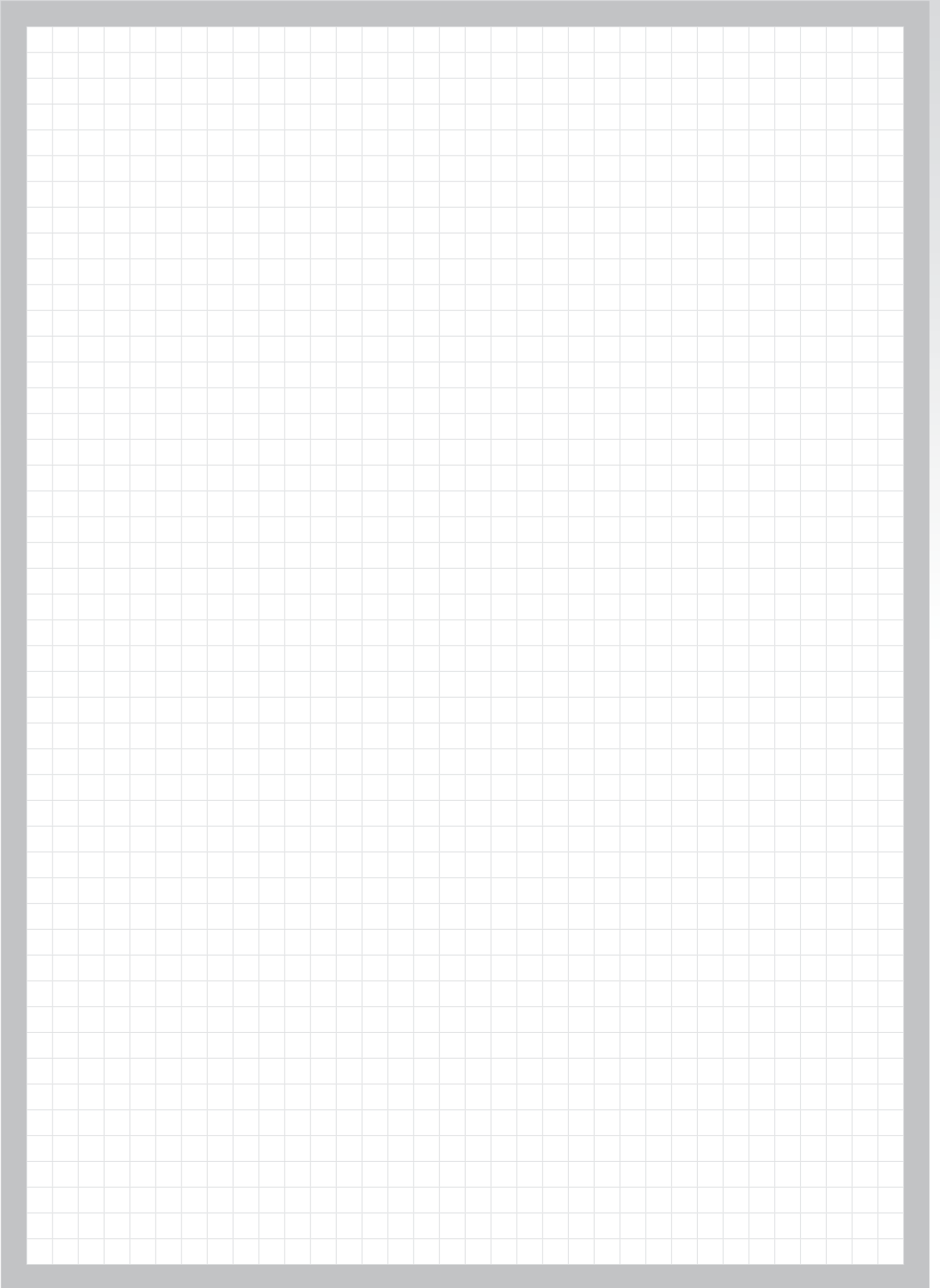


No. 116 101 L

Emphasised articles are new additions.



1.08



X-ON Electronics

Largest Supplier of Electrical and Electronic Components

Click to view similar products for [Ruko manufacturer](#):

Other Similar products are found below :

[217-050](#) [214218](#) [214047](#) [202042E](#) [202032E](#) [202040E](#) [102-116](#) [102119E](#) [102143](#) [101051](#) [237020](#) [242-207](#) [106302](#) [109200](#) [109254](#) [242-205](#) [237-060](#) [230080](#) [102771](#) [102785](#) [244200](#) [244203](#) [A215215RO](#) [A245058TX](#) [A245040](#) [101001](#) [217-025](#) [214063](#) [214066](#) [214130](#) [217-040](#) [102111E](#) [101063](#) [237-030](#) [A101032](#) [231-040](#) [116047](#) [A250214TRO](#) [214215](#) [109325](#) [214805](#) [214214](#) [214061](#) [214058](#) [203025](#) [214059](#)
[214217](#) [231-050](#) [232025](#) [232 030](#)