



ROTARY BURRS



Product information

DIN 8033 ZYA	A		Shape A cylinder (ZYA) without end tothing		
DIN 8033 ZYA	A		Shape A cylinder (ZYA) with end tothing		
DIN 8033 WCR	C		Shape C oval (WRC)		
DIN 8033 KUD	D		Shape D ball type (KUD)		
DIN 8033 TRE	E		Shape E tear drop (TRE)		
DIN 8033 RBF	F		Shape F ball nose tree (RBF)		
DIN 8033 SPG	G		Shape G tree (SPG)		
DIN 8033 -	H		Shape H flame (FLH)		
DIN 8033 KSJ	J		Shape J cone 60° (KSJ)		
DIN 8033 KSK	K		Shape K cone 90° (KSK)		
DIN 8033 KEL	L		Shape L round cone (KEL)		
DIN 8033 SKM	M		Shape M cone (SKM)		
DIN 8033 WKN	N		Shape N angle (WKN)		

Product information

The high-performance tungsten carbide rotary burrs provide maximum cutting edge stability with a simultaneous high tenacity of the cutting edge.

Tungsten carbide rotary burrs Alu

High-performance tungsten carbide rotary burrs with aluminium tooting.

Fields of application: non-ferrous metals, aluminium, brass, copper, zinc, diecasts and plastics. To debur, break edges, trim and surface processing.

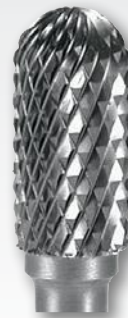


Tungsten carbide rotary burrs TC

High-performance tungsten carbide rotary burrs with cross tooting.

The cross tooting provides a higher cutting capacity compared with the simple tooting. This particularly has a positive effect on materials which are difficult to cut.

Fields of application: for high-alloy steels, non-rusting steels, acid-resistant steels, heat-resistant steels, diecasts and plastics. To debur, break edges, trim, process welding seams, surface processing.



Tungsten carbide rotary burrs TiCN

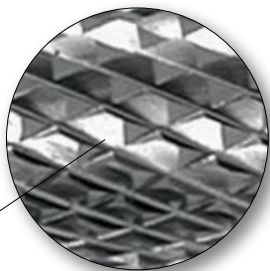
Like tungsten carbide rotary burrs TC with titanium carbon nitride coating.

The TiCN wear-resistant coating increases the surface hardness of the tool to approx. 3,000 HV / micro-hardness and the heat resistance to 400° C. This increases service life and productivity.

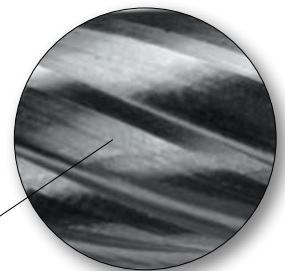
Fields of application: for high-alloy steels, non-rusting steels, acid-resistant steels, heat-resistant steels, diecasts and plastics. To debur, break edges, trim, process welding seams, surface processing.



Cutting



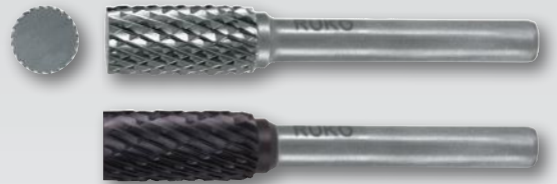
With cross tooting



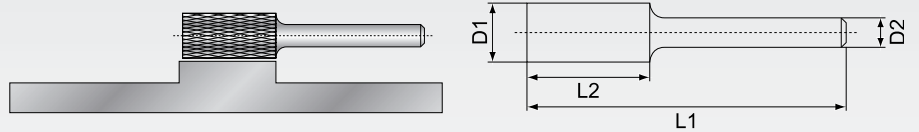
With aluminium tooting

Tungsten carbide rotary burrs TC / TiCN shape A cylinder (ZYA) without end toothing

Finish: shape A cylinder (ZYA) without end toothing
Cutting: cross toothing
Toothing: CT 4
Surface: bright / titanium carbon nitride coating



Packing unit:
each in plastic packaging



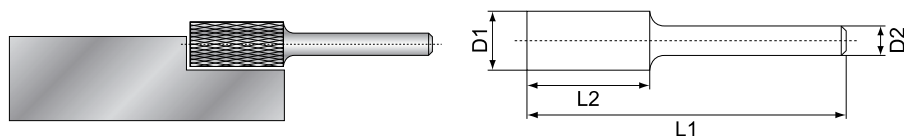
Ø-D1 mm	L2 mm	Total length L1 min. mm	Shank-Ø D2 mm	Article no.	Article no.	Article no.
				Alu	TC	TiCN
3,0	14,0	38,0	3,0	—	116 046	—
6,0	18,0	58,0	6,0	—	116 010	116 010 TC
8,0	18,0	60,0	6,0	—	116 011	116 011 TC
10,0	20,0	60,0	6,0	—	116 012	116 012 TC
12,0	25,0	65,0	6,0	—	116 013	116 013 TC
16,0	25,0	65,0	6,0	—	116 014	116 014 TC

Tungsten carbide rotary burrs Alu / TC / TiCN shape A cylinder (ZYA) with end toothing

Finish: shape A cylinder (ZYA) with end toothing
Cutting: cross toothing / aluminium toothing
Toothing: CT 4 / aluminium
Surface: bright / titanium carbon nitride coating



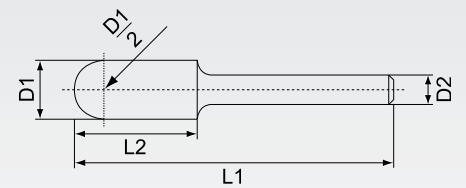
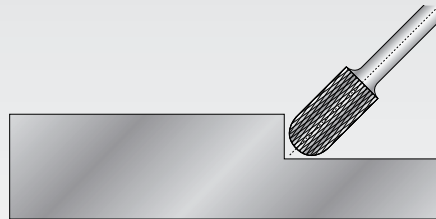
Packing unit:
each in plastic packaging



Ø-D1 mm	L2 mm	Total length L1 min. mm	Shank-Ø D2 mm	Article no.	Article no.	Article no.
				Alu	TC	TiCN
3,0	14,0	38,0	3,0	—	116 047	—
6,0	18,0	58,0	6,0	116 015 A	116 015	116 015 TC
8,0	18,0	60,0	6,0	—	116 016	116 016 TC
10,0	20,0	60,0	6,0	—	116 017	116 017 TC
12,0	25,0	65,0	6,0	116 018 A	116 018	116 018 TC
16,0	25,0	65,0	6,0	—	116 019	116 019 TC

Tungsten carbide rotary burrs Alu / TC / TiCN shape C oval (WRC)

Finish: shape C oval (WRC)
Cutting: cross tothing / aluminium tothing
Tothing: CT 4 / aluminium
Surface: bright / titanium carbon nitride coating

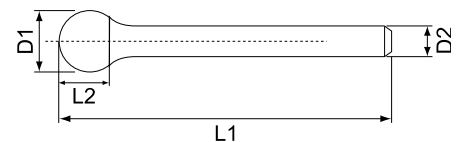
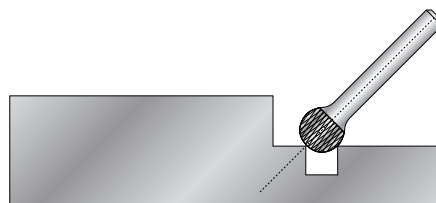


Packing unit:
each in plastic packaging

Ø-D1 mm	L2 mm	Total length L1 min. mm	Shank-Ø D2 mm	Article no.	Article no.	Article no.
				Alu	TC	TiCN
3,0	14,0	38,0	3,0	—	116 048	—
6,0	18,0	56,0	6,0	116 020 A	116 020	116 020 TC
8,0	18,0	60,0	6,0	—	116 021	116 021 TC
10,0	20,0	60,0	6,0	—	116 022	116 022 TC
12,0	25,0	65,0	6,0	116 023 A	116 023	116 023 TC
16,0	25,0	65,0	6,0	—	116 024	116 024 TC

Tungsten carbide rotary burrs Alu / TC / TiCN shape D ball type (KUD)

Finish: shape D ball type (KUD)
Cutting: cross tothing / aluminium tothing
Tothing: CT 4 / aluminium
Surface: bright / titanium carbon nitride coating



Packing unit:
each in plastic packaging

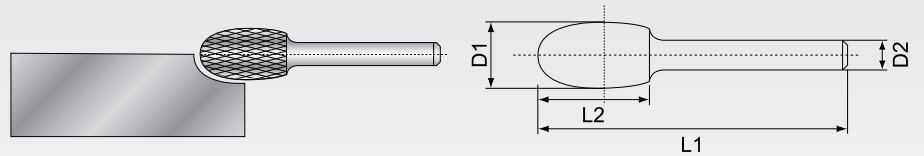
Ø-D1 mm	L2 mm	Total length L1 min. mm	Shank-Ø D2 mm	Article no.	Article no.	Article no.
				Alu	TC	TiCN
3,0	2,7	38,0	3,0	—	116 052	—
6,0	5,0	56,0	6,0	116 041 A	116 041	116 041 TC
8,0	7,0	47,0	6,0	—	116 042	116 042 TC
10,0	9,0	49,0	6,0	—	116 043	116 043 TC
12,0	11,0	51,0	6,0	116 044 A	116 044	116 044 TC
16,0	15,0	54,0	6,0	—	116 045	116 045 TC

Tungsten carbide rotary burrs TC / TiCN shape E tear drop (TRE)

Finish: shape E tear drop (TRE)
Cutting: cross tothing
Toothing: CT 4
Surface: bright / titanium carbon nitride coating



Packing unit:
each in plastic packaging



Ø-D1 mm	L2 mm	Total length L1 min. mm	Shank-Ø D2 mm	Article no.	Article no.	Article no.
				Alu	TC	TiCN
3,0	6,0	38,0	3,0	—	116 210	—
6,0	10,0	50,0	6,0	—	116 211	116 211 TC
8,0	15,0	60,0	6,0	—	116 212	116 212 TC
10,0	16,0	60,0	6,0	—	116 213	116 213 TC
12,0	22,0	67,0	6,0	—	116 214	116 214 TC
16,0	25,0	70,0	6,0	—	116 215	116 215 TC

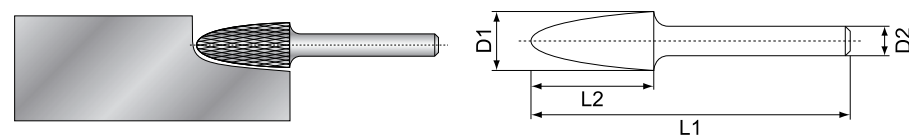
1.08

Tungsten carbide rotary burrs Alu / TC / TiCN shape F ball nose tree (RBF)

Finish: shape F ball nose tree (RBF)
Cutting: cross tothing / aluminium tothing
Toothing: CT 4 / aluminium
Surface: bright / titanium carbon nitride coating



Packing unit:
each in plastic packaging



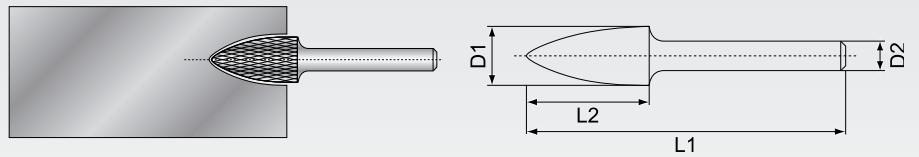
Ø-D1 mm	L2 mm	Total length L1 min. mm	Shank-Ø D2 mm	Article no.	Article no.	Article no.
				Alu	TC	TiCN
3,0	13,0	38,0	3,0	—	116 050	—
6,0	18,0	58,0	6,0	116 030 A	116 030	116 030 TC
8,0	18,0	60,0	6,0	—	116 031	116 031 TC
10,0	20,0	60,0	6,0	—	116 032	116 032 TC
12,0	25,0	65,0	6,0	116 033 A	116 033	116 033 TC
16,0	25,0	70,0	6,0	—	116 034	116 034 TC

Tungsten carbide rotary burrs Alu / TC / TiCN shape G tree (SPG)

Finish: shape G tree (SPG)
Cutting: cross tothing / aluminium tothing
Toothing: CT 4 / aluminium
Surface: bright / titanium carbon nitride coating



Packing unit:
each in plastic packaging



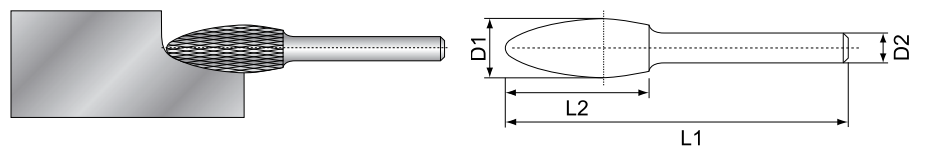
Ø-D1 mm	L2 mm	Total length L1 min. mm	Shank-Ø D2 mm	Article no. Alu	Article no. TC	Article no. TiCN
3,0	13,0	38,0	3,0	—	116 049	—
6,0	18,0	58,0	6,0	116 025 A	116 025	116 025 TC
8,0	18,0	60,0	6,0	—	116 026	116 026 TC
10,0	20,0	60,0	6,0	—	116 027	116 027 TC
12,0	25,0	65,0	6,0	116 028 A	116 028	116 028 TC
16,0	25,0	70,0	6,0	—	116 029	116 029 TC

Tungsten carbide rotary burrs TC / TiCN shape H flame (FLH)

Finish: shape H flame (FLH)
Cutting: cross tothing
Toothing: CT 4
Surface: bright / titanium carbon nitride coating



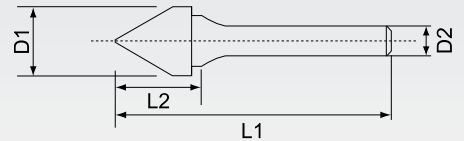
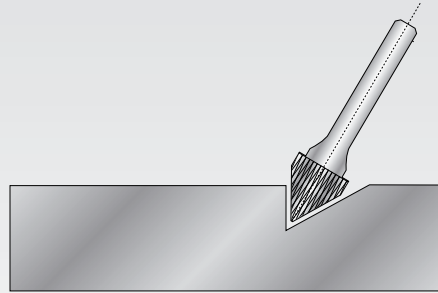
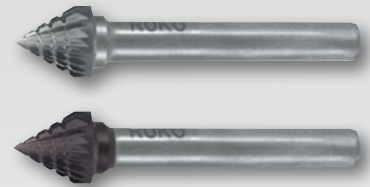
Packing unit:
each in plastic packaging



Ø-D1 mm	L2 mm	Total length L1 min. mm	Shank-Ø D2 mm	Article no. Alu	Article no. TC	Article no. TiCN
3,0	6,0	38,0	3,0	—	116 216	—
6,0	14,0	50,0	6,0	—	116 217	116 217 TC
8,0	20,0	65,0	6,0	—	116 218	116 218 TC
10,0	20,0	65,0	6,0	—	116 219	116 219 TC
12,0	32,0	77,0	6,0	—	116 220	116 220 TC
16,0	36,0	82,0	6,0	—	116 221	116 221 TC

Tungsten carbide rotary burrs TC / TiCN shape J cone 60° (KSJ)

Finish: shape J cone 60° (KSJ)
Cutting: cross tothing
Toothing: CT 4
Surface: bright / titanium carbon nitride coating



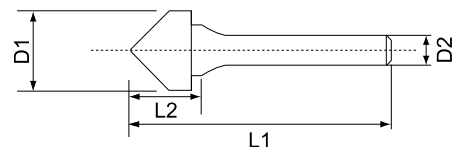
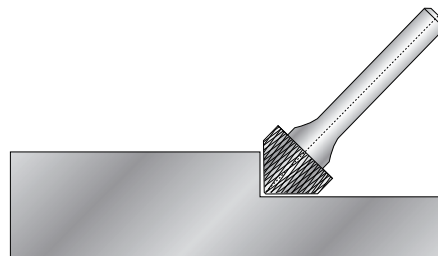
Packing unit:
each in plastic packaging

Ø-D1 mm	L2 mm	Total length L1 min. mm	Shank-Ø D2 mm	Article no. Alu	Article no. TC	Article no. TiCN
3,0	3,0	38,0	3,0	—	116 222	—
6,0	6,0	50,0	6,0	—	116 223	116 223 TC
10,0	8,0	56,0	6,0	—	116 224	116 224 TC
12,0	11,0	60,0	6,0	—	116 225	116 225 TC
16,0	14,5	62,0	6,0	—	116 226	116 226 TC

1.08

Tungsten carbide rotary burrs TC / TiCN shape K cone 90° (KSK)

Finish: shape K cone 90° (KSK)
Cutting: cross tothing
Toothing: CT 4
Surface: bright / titanium carbon nitride coating



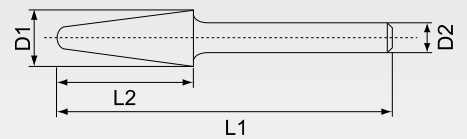
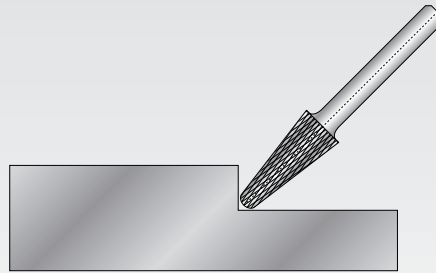
Packing unit:
each in plastic packaging

Ø-D1 mm	L2 mm	Total length L1 min. mm	Shank-Ø D2 mm	Article no. Alu	Article no. TC	Article no. TiCN
3,0	3,0	38,0	3,0	—	116 227	—
6,0	3,0	50,0	6,0	—	116 228	116 228 TC
10,0	5,0	53,0	6,0	—	116 229	116 229 TC
12,0	7,0	55,0	6,0	—	116 230	116 230 TC
16,0	8,0	57,0	6,0	—	116 231	116 231 TC



Tungsten carbide rotary burrs Alu / TC / TiCN shape L round cone (KEL)

Finish: shape L round cone (KEL)
Cutting: cross toothing / aluminium toothing
Toothing: CT 4 / aluminium
Surface: bright / titanium carbon nitride coating

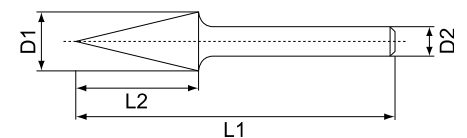
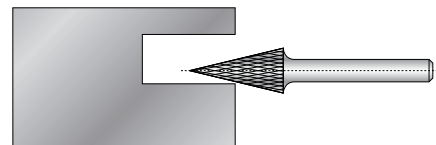


Packing unit:
each in plastic packaging

Ø-D1 mm	L2 mm	Total length L1 min. mm	Shank-Ø D2 mm	Article no. Alu	Article no. TC	Article no. TiCN
3,0	14,0	38,0	3,0	—	116 232	—
6,0	18,0	50,0	6,0	116 233 A	116 233	116 233 TC
8,0	25,0	70,0	6,0	—	116 234	116 234 TC
10,0	20,0	65,0	6,0	116 235 A	116 235	116 235 TC
12,0	32,0	77,0	6,0	116 236 A	116 236	116 236 TC
16,0	33,0	78,0	6,0	116 237 A	116 237	116 237 TC

Tungsten carbide rotary burrs TC / TiCN shape M cone (SKM)

Finish: shape M cone (SKM)
Cutting: cross toothing
Toothing: CT 4
Surface: bright / titanium carbon nitride coating



Packing unit:
each in plastic packaging

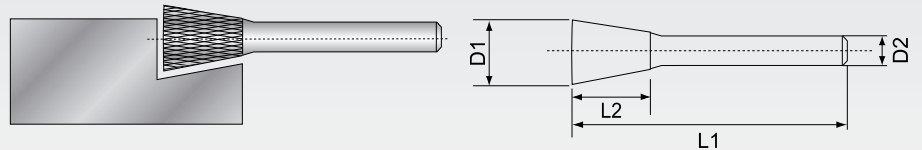
Ø-D1 mm	L2 mm	Total length L1 min. mm	Shank-Ø D2 mm	Article no. Alu	Article no. TC	Article no. TiCN
3,0	11,0	38,0	3,0	—	116 051	—
6,0	18,0	58,0	6,0	—	116 035	116 035 TC
8,0	18,0	60,0	6,0	—	116 036	116 036 TC
10,0	20,0	60,0	6,0	—	116 037	116 037 TC
12,0	25,0	65,0	6,0	—	116 038	116 038 TC
16,0	25,0	70,0	6,0	—	116 039	116 039 TC

Tungsten carbide rotary burrs TC / TiCN shape N angle (WKN)

Finish: shape N angle (WKN)
 Cutting: cross tothing
 Tothing: CT 4
 Surface: bright / titanium carbon nitride coating



Packing unit:
 each in plastic packaging



Ø-D1 mm	L2 mm	Total length L1 min. mm	Shank-Ø D2 mm	Article no. Alu	Article no. TC	Article no. TiCN
3,0	5,0	38,0	3,0	—	116 238	—
6,0	8,0	50,0	6,0	—	116 239	116 239 TC
10,0	10,0	55,0	6,0	—	116 240	116 240 TC
12,0	13,0	58,0	6,0	—	116 241	116 241 TC
16,0	19,0	64,0	6,0	—	116 242	116 242 TC

Sets of tungsten carbide rotary burrs Alu / TC / TiCN in steel case

Description	Article no.
10-piece set of tungsten carbide rotary burrs TC 2 x shape A, cylinder (ZYA) without end tothing Ø D1 10,0 / 12,0 mm 2 x shape C, oval (WRC) Ø D1 10,0 / 12,0 mm 2 x shape G, tree (SPG) Ø D1 10,0 / 12,0 mm 2 x shape F, ball nose tree (RBF) Ø D1 10,0 / 12,0 mm 1 x shape M, cone (SKM) Ø D1 12,0 mm 1 x shape D, ball type (KUD) Ø D1 12,0 mm	116 003
10-piece set of tungsten carbide rotary burrs TiCN 2 x shape A, cylinder (ZYA) without end tothing Ø D1 10,0 / 12,0 mm 2 x shape C, oval (WRC) Ø D1 10,0 / 12,0 mm 2 x shape G, tree (SPG) Ø D1 10,0 / 12,0 mm 2 x shape F, ball nose tree (RBF) Ø D1 10,0 / 12,0 mm 1 x shape M, cone (SKM) Ø D1 12,0 mm 1 x shape D, ball type (KUD) Ø D1 12,0 mm	116 003 TC
10-piece set of tungsten carbide rotary burrs ALU 2 x shape A, cylinder (ZYA) with end tothing Ø D1 6,0 / 12,0 mm 2 x shape C, oval (WRC) Ø D1 6,0 / 12,0 mm 2 x shape G, tree (SPG) Ø D1 6,0 / 12,0 mm 2 x shape F, ball nose tree (RBF) Ø D1 6,0 / 12,0 mm 2 x shape D, ball type (KUD) Ø D1 6,0 / 12,0 mm	116 103 A



No. 116 003



No. 116 003 TC

Sets of tungsten carbide rotary burrs Alu / TC / TiCN in polystyrene case

Description	Article no.
10-piece set of tungsten carbide rotary burrs TC 2 x shape A, cylinder (ZYA) without end tothing Ø D1 10,0 / 12,0 mm 2 x shape C, oval (WRC) Ø D1 10,0 / 12,0 mm 2 x shape G, tree (SPG) Ø D1 10,0 / 12,0 mm 2 x shape F, ball nose tree (RBF) Ø D1 10,0 / 12,0 mm 1 x shape M, cone (SKM) Ø D1 12,0 mm 1 x shape D, ball type (KUD) Ø D1 12,0 mm	116 003 RO
10-piece set of tungsten carbide rotary burrs TiCN 2 x shape A, cylinder (ZYA) without end tothing Ø D1 10,0 / 12,0 mm 2 x shape C, oval (WRC) Ø D1 10,0 / 12,0 mm 2 x shape G, tree (SPG) Ø D1 10,0 / 12,0 mm 2 x shape F, ball nose tree (RBF) Ø D1 10,0 / 12,0 mm 1 x shape M, cone (SKM) Ø D1 12,0 mm 1 x shape D, ball type (KUD) Ø D1 12,0 mm	116 003 TCRO
10-piece set of tungsten carbide rotary burrs ALU 2 x shape A, cylinder (ZYA) with end tothing Ø D1 6,0 / 12,0 mm 2 x shape C, oval (WRC) Ø D1 6,0 / 12,0 mm 2 x shape G, tree (SPG) Ø D1 6,0 / 12,0 mm 2 x shape F, ball nose tree (RBF) Ø D1 6,0 / 12,0 mm 2 x shape D, ball type (KUD) Ø D1 6,0 / 12,0 mm	116 103 ARO



No. 116 003 RO



No. 116 003 TCRO

Sets of tungsten carbide rotary burrs TC / TiCN in a convenient table display

Description	Article no.
35-piece set of tungsten carbide rotary burrs TC in a convenient table display each 1 x Ø D1 6,0 mm + 8,0 mm + 10,0 mm + 12,0 mm + 16,0 mm 5 TC rotary burrs shape A, cylinder (ZYA) with end tothing 5 TC rotary burrs shape A, cylinder (ZYA) without end tothing 5 TC rotary burrs shape C, oval (WRC) 5 TC rotary burrs shape G, tree (SPG) 5 TC rotary burrs shape F, ball nose tree (RBF) 5 TC rotary burrs shape M, cone (SKM) 5 TC rotary burrs shape D, ball type (KUD)	116 008
35-piece set of tungsten carbide rotary burrs TiCN in a convenient table display each 1 x Ø D1 6,0 mm + 8,0 mm + 10,0 mm + 12,0 mm + 16,0 mm 5 TC rotary burrs shape A, cylinder (ZYA) with end tothing 5 TC rotary burrs shape A, cylinder (ZYA) without end tothing 5 TC rotary burrs shape C, oval (WRC) 5 TC rotary burrs shape G, tree (SPG) 5 TC rotary burrs shape F, ball nose tree (RBF) 5 TC rotary burrs shape M, cone (SKM) 5 TC rotary burrs shape D, ball type (KUD)	116 008 TC



No. 116 103 ARO



No. 116 008

Product information

Compressed air grinder

- Handle 360° air exhaust
- Cushion rubber grip
- Power regulator



Compressed air grinder – short version

Rotation speed:	25.000 r.p.m.	Noise level:	77 dBA
Ø- Air consumption:	113 L/Min	Rec. air pressure:	6,2 bar
Total length:	156,0 mm	Compressed air tool holder:	G 1/4"
Wight:	0,57 kg	Collet size rotary burrs:	Ø 6,0 mm

Packing unit:
each in plastic packaging

Description	Article no.
Compressed air grinder – short version	116 100 L



Compressed air grinder with 90° angled head

Rotation speed:	20.000 r.p.m.	Noise level:	77 dBA
Ø- air consumption:	113 L/Min	Rec. air pressure:	6,2 bar
Total length:	170,0 mm	Compressed air tool holder:	G 1/4"
Wight:	0,60 kg	Collet size rotary burrs:	Ø 6,0 mm

Packing unit:
each in plastic packaging

Description	Article no.
Compressed air grinder with 90° angled head	116 110 L



1.08

Compressed air grinder with 115° angled head

Rotation speed: 20.000 r.p.m. Noise level: 77 dBA
 Ø- air consumption: 113 L/Min Rec. air pressure: 6,2 bar
 Total length: 201,0 mm Compressed air tool holder: G 1/4"
 Weight: 0,70 kg Collet size rotary burrs: Ø 6,0 mm

Packing unit:
each in plastic packaging

Description	Article no.
Compressed air grinder with 115° angled head	116 120 L

Compressed air grinder – long version

Rotation speed: 25.000 r.p.m. Noise level: 77 dBA
 Ø- air consumption: 113 L/Min Rec. air pressure: 6,2 bar
 Total length: 251,0 mm Compressed air tool holder: G 1/4"
 Weight: 0,90 kg Collet size rotary burrs: Ø 6,0 mm

Packing unit:
each in plastic packaging

Description	Article no.
Compressed air grinder - long version	116 130 L



Compressed air grinder set with coupling plug incl. set of rotary burrs TC in plastic case

Description	Article no.
12-piece set of compressed air grinder 1 Compressed air grinder + Set of tungsten carbide rotary burrs in mini-box, 10 pcs. each 1x Ø D1 6,0 + 12,0 mm 2 TC rotary burrs shape A, cylinder (ZYA) with end tothing 2 TC rotary burrs shape C, oval (WRC) 2 TC rotary burrs shape G, tree (SPG) 2 TC rotary burrs shape F, ball nose tree (RBF) 2 TC rotary burrs shape D, ball type (KUD) + Coupling plug for compressed air grinder	116 100
5-piece set of compressed air grinder 1 Compressed air grinder + Set of tungsten carbide rotary burrs in mini-box, 3 pcs. each 1x Ø D1 6,0 + 12,0 mm 1 TC rotary burr shape A, cylinder (ZYA) with end tothing 1 TC rotary burr shape G, pionted arch (SPG) 1 TC rotary burr shape D, cone (KUD) + Coupling plug for compressed air grinder	116 113



No. 116 100



No. 116 002

Set of tungsten carbide rotary burrs in mini-box

3-piece set of tungsten carbide rotary burrs in mini-box each 1 x Ø D1 10,0 mm 1 TC rotary burr shape A, cylinder (ZYA) with end tothing 1 TC rotary burr shape G, pionted arch (SPG) 1 TC rotary burr shape D, cone (KUD)	116 001
10-piece set of tungsten carbide rotary burrs in mini-box each 1 x Ø D1 6,0 mm + Ø D1 12,0 mm 2 TC rotary burrs shape A, cylinder (ZYA) with end tothing 2 TC rotary burrs shape C, oval (WRC) 2 TC rotary burrs shape G, tree (SPG) 2 TC rotary burrs shape F, ball nose tree (RBF) 2 TC rotary burrs shape D, ball type (KUD)	116 002



No. 116 100-1

Accessories for compressed air grinder set

Packing unit:
each in plastic packaging

Description	Article no.
Compressed air grinder solo 116 100 L + Coupling plug 116 101 L	116 100 S
Rotor replacement for compressed air grinder	116 100-1
Coupling plug, nominal size 7,2 mm, external thread G 1/4"	116 101 L
Collet 3,0 mm for compressed air grinder	116 121
Collet 1/4" for compressed air grinder	116 119



No. 116 121

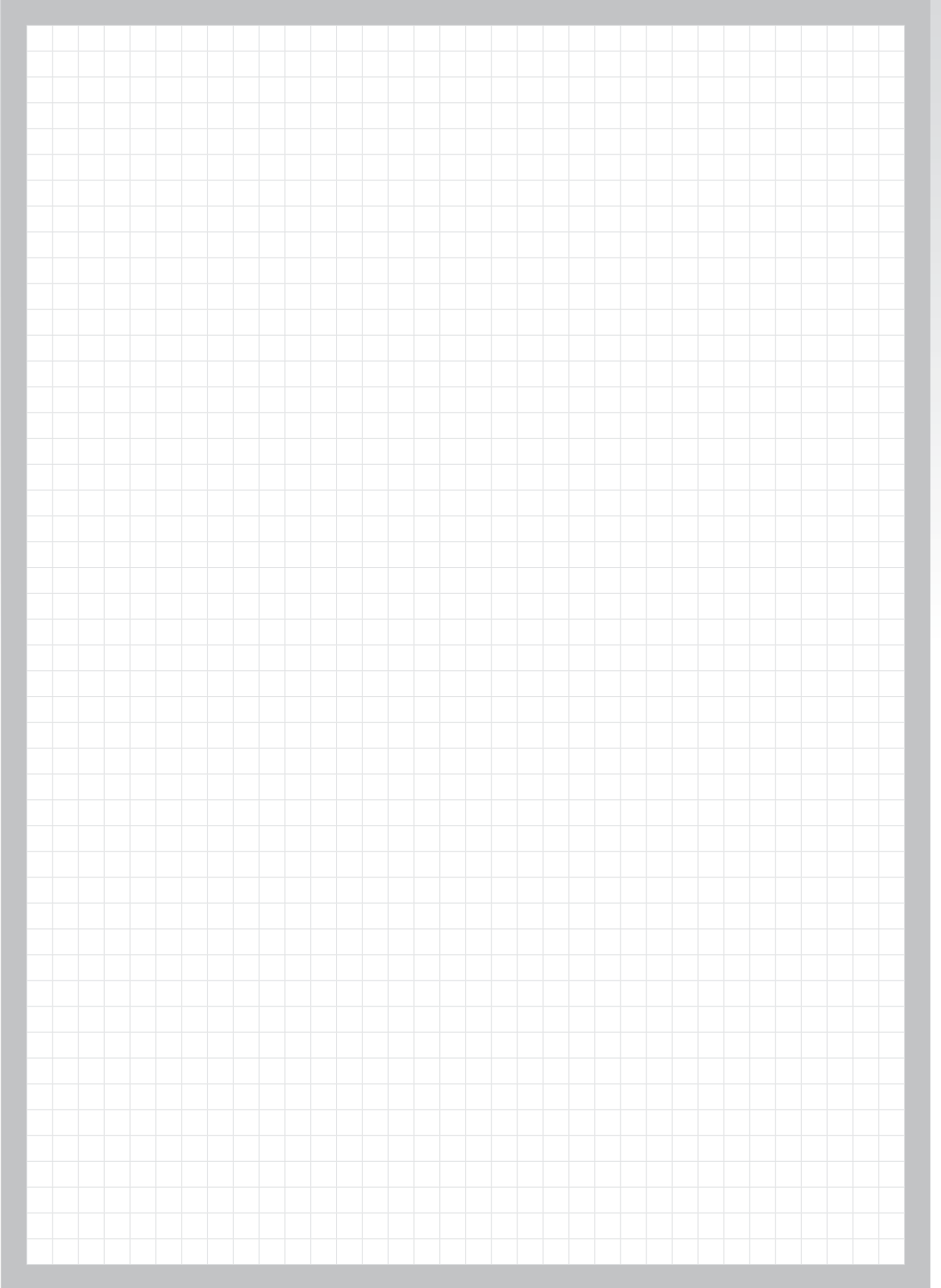


No. 116 101 L

Emphasised articles are new additions.



1.08



X-ON Electronics

Largest Supplier of Electrical and Electronic Components

Click to view similar products for [ruko manufacturer](#):

Other Similar products are found below :

[214214](#) [214100](#) [214043](#) [214036](#) [202040E](#) [208040](#) [214049](#) [214053](#) [214096](#) [101021](#) [101062](#) [232-040](#) [102146](#) [102303E](#) [241 001](#) [242-207](#)
[102114E](#) [102411](#) [245001](#) [242-205](#) [116048](#) [102771](#) [102785](#) [244201](#) [A215214RO](#) [A215215RO](#) [217-020](#) [214057](#) [202033E](#) [202030E](#) [214034](#)
[214044](#) [214081](#) [215030](#) [232025](#) [237-030](#) [241-010](#) [241-101](#) [244200](#) [A214215RO](#) [241 102](#) [217-315](#) [214047](#) [208050](#) [214062](#) [214140](#)
[230025](#) [102-114](#) [A101038](#) [109220](#)