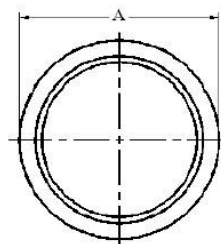
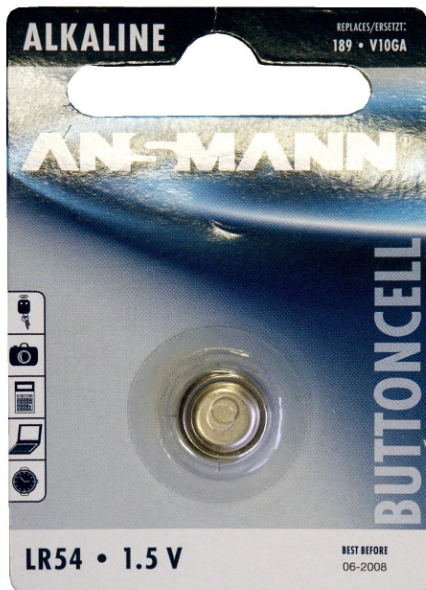
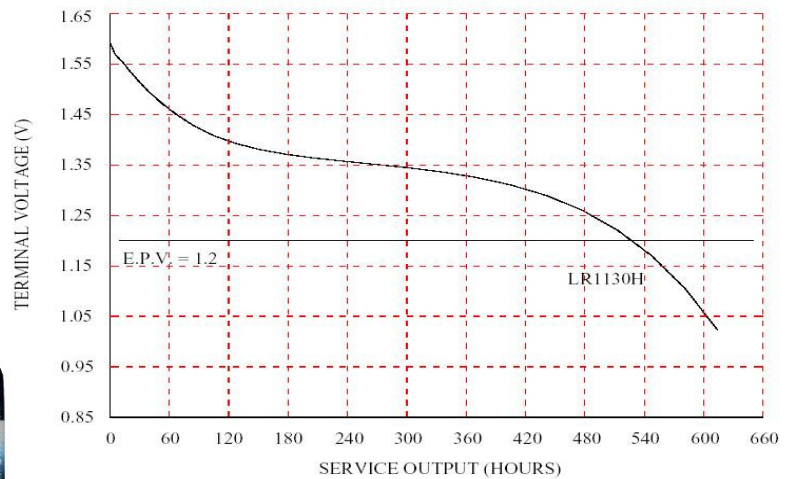


nominal voltage:	1,5V	conditions
off load voltage:	1,55...1,62V	new battery
capacity:		
nominal:	50mAh	continuous discharge at 20°C under 15kohms load, end-point voltage 1,2V
electrical characteristics: (new battery)	≥ 1,53V ≥ 1,52V	off load voltage on load voltage, under 6,8Kohms load, measuring time 0,3s
service output:	520h 470h	new battery (tested within 30 days after delivery) after 12 months storage at room temperature discharge load 15Kohms, daily discharge time 24h, end-point voltage 1,2V
shelf life:	12months 90%	after delivery, under proper storage conditions of the capacity will be maintained after 12 months storage
safety characteristics short circuit:	no explosion shall be	at 20°C, short circuit period 24h
chemical system:	Zinc-Manganese Dioxide (Potassium Hydroxide Electrolyte)	

discharge diagram:

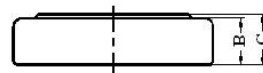
DISCHARGE METHOD : 15kΩ , 24hrs/day
TEMPERATURE : 20 ± 2 °C



Dimensions (in mm) :

Dimensions	Specification
A	∅11.60 ^{+0.00} _{-0.35}
B	2.77 ^{+0.00} _{-0.25}
C	3.05 ^{-0.00} _{-0.30}

weight incl. blister: 2,5g



	specifications for model/type:	Alkaline Button Cell LR54
	Ansmann drawing number / part number:	5015313
	author / date:	Gramlich / 30.01.2008

X-ON Electronics

Largest Supplier of Electrical and Electronic Components

Click to view similar products for [ansmann](#) manufacturer:

Other Similar products are found below :

[5020012](#) [1000-0003](#) [5030992](#) [1520-0004](#) [1501-0004-1](#) [1250-0013](#) [1001-0020-UK](#) [2312-3003](#) [1600-0199](#) [5030902](#) [1600-0137](#) [1900-0019](#)
[1001-0014-UK](#) [5035362](#) [5707173](#) [5311113 / APS 1000](#) [5035391](#) [10950964/01](#) [5000023](#) [5030982](#) [1600-0138](#) [1250-0014](#) [BCA120-350](#)
[1600-0145](#) [5015293](#) [2311-3003](#) [5030802](#) [5035222](#) [5030912](#) [5016243](#) [2310-3001](#) [5030641](#) [5001183](#) [1600-0154](#) [5035352](#) [ACS310](#) [5035342](#)
[5035202](#) [5015332](#) [5015303](#) [5035201](#) [2311-3002](#)