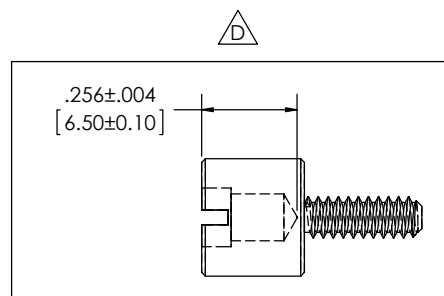
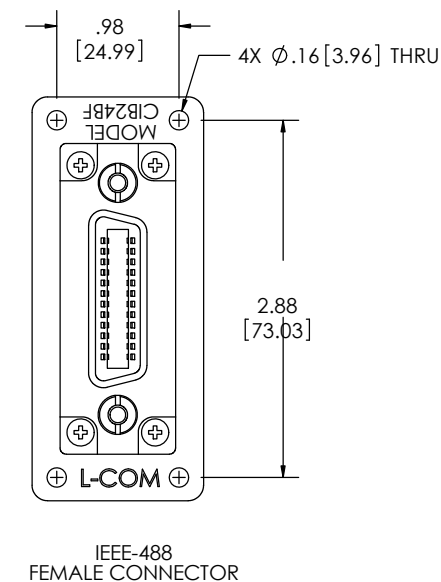
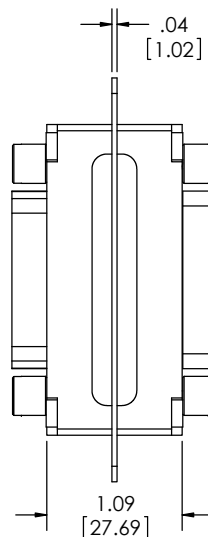
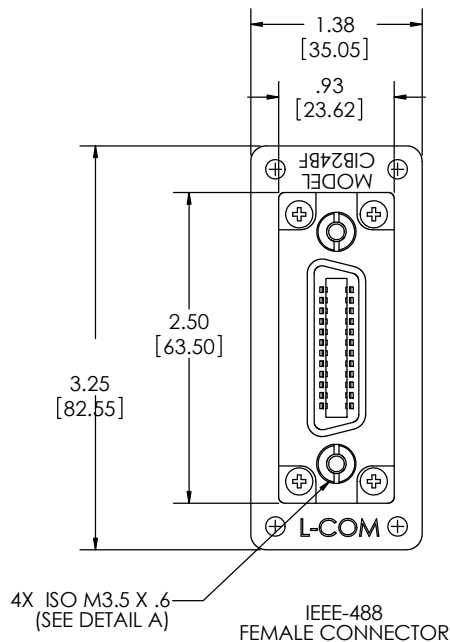
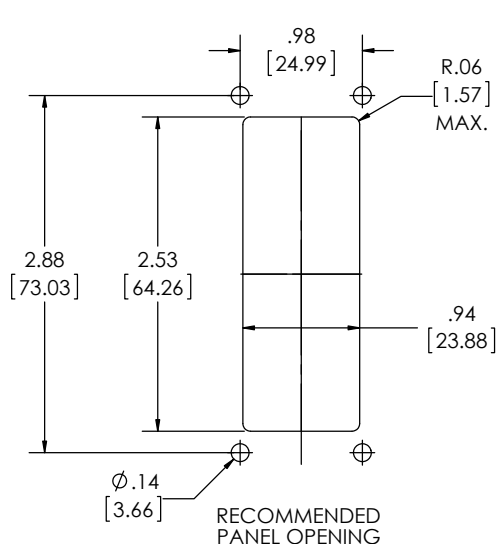


THE INFORMATION CONTAINED IN THIS DRAWING IS THE SOLE PROPERTY OF L-COM, INC. ANY REPRODUCTIONS IN PART OR WHOLE WITHOUT THE WRITTEN PERMISSION OF L-COM, INC. IS PROHIBITED.

RoHS Compliant ✓

REVISIONS			
REV	DESCRIPTION	DATE	CHANGED BY
A	RELEASED TO PRODUCTION	8/27/01	R. CARRICK
B	ECN 3372- UPDATE DWG FORMAT	5/30/08	D. GREEN
C	ECN 6487- ADDED MIN. THREAD DEPTH FOR SCREW, UPD FORMAT & PKG	10/25/12	D. DESJARDIN
D	ECN 6514- CHANGED THREAD DEPTH FROM .275" MIN TO .256 ± .004"	11/9/12	D. DESJARDIN



DETAIL A: INTERNAL THREAD DEPTH

NOTES:

1. MATERIAL: HOUSING; CAST ALUMINUM. INSULATOR; GLASS FILLED PBT (BLUE) U.L. 94V-0 FLAMMABILITY RATING.
2. MOUNTING FLANGE: FIBER GLASS FILLED THERMOSETTING RESIN.
3. FINISH: HOUSING; NICKEL PLATED. CONTACTS; 15 MICRO INCHES GOLD PLATE.
4. WIRING: STRAIGHT THRU.
5. TWO DUST CAPS PROVIDED WITH ADAPTOR.
6. COMPONENT SHALL BE INDIVIDUALLY PACKAGED IN ACCORDANCE WITH L-COM SPECIFICATION PS-0031.

UNLESS OTHERWISE SPECIFIED, DIMENSIONS ARE IN INCHES (mm)
 OVERALL CABLE LENGTH TOLERANCE:
 ≤12 (305) ≤±0 (1.524) = +.25(1) / -0
 >12 (305) ≤120 (3048) = ±.10(2.54) / -0
 >120 (3048) ≤300 (7620) = ±.15(3.81) / -0
 >300 (7620) = ±.25(6.35) / -0
 ALL OTHER DIMENSIONAL TOLERANCES:
 X = ±.2
 XX = ±.152
 XXX = ±.005

APPROVALS	DATE
DRAWN BY RON CARRICK	8/17/2001
CHECKED BY DOUG PARHAM	8/27/2001
APPROVED BY C. MCCORMICK	8/27/2001

L-com Global Connectivity		45 BEECHWOOD DRIVE NORTH ANDOVER, MA 01845	
CATEGORY IEEE-488		PRODUCT DESCRIPTION ADAPTOR, GPIB BULKHEAD, F/F	
SIZE B	PSCM NO. 43321	DWG. NO. CIB24BF	REV. D
SCALE: 1:1		CAD FILE: CIB24BF.SLDDRW	
		SHEET 1 OF 1	



X-ON Electronics

Largest Supplier of Electrical and Electronic Components

Click to view similar products for [l-com](#) manufacturer:

Other Similar products are found below :

[FOA-550A](#) [UMC-201](#) [CSMN50MF-5](#) [CSMNB15MF-15](#) [TRD815RA2BL-5](#) [CA3A-90DA-1M](#) [CTLF3VGAMM-20](#) [HDCAMM-3](#)
[U3A00014-03M](#) [CSMT15MF-10](#) [CSMT15MM-15](#) [CSMT15MM-25](#) [CSPL15MF-50](#) [CSPL25MF-25](#) [CSPL9MF-10](#) [CSPL9MF-5](#)
[CSPL25MF-5](#) [CSPL25MF-2.5](#) [AL-IPEPS](#) [NB201611-10F-1](#) [TDG1026KC5-MNL](#) [NB121005-10F](#) [TRD855SRA6DBL-10M](#)
[TRD855SRA7DBL-1M](#) [TRD855SRA7DBL-10M](#) [U2A00017-05M](#) [PR175SCDLCQ24](#) [TRG508-T4T-3M](#) [TRA5261-15F](#) [TRA5261S-1F](#)
[TRA6261-1F](#) [USBBFT](#) [DGB25M](#) [HG2403RD-RSF](#) [CASATAL-18](#) [CSM25MM-10](#) [CSM37MF-10](#) [CSUSB-100](#) [CA3A-90RA-1M](#) [CA3A-](#)
[90RMICB-1M](#) [U2A00003-3M](#) [U3A00003-05M](#) [U2A00008-12I](#) [U3A00007-075M](#) [U3A00007-1M](#) [HGV-903U](#) [CSMT15MF-5](#)
[CSMT15MM-50](#) [CSPL15MF-25](#) [LPXT-WP-PMT](#)