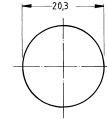


Illuminable pushbutton, with lamp socket BA9s (MBC/MCC), mounting hole diameter 20.3 mm, 250 V/2 A



Pict.: with red lens

Mounting hole

Technical data

General information

Form of lens protruding lens
 Colour of lens see order block
 Form of collar round

Dimensions

Diameter of collar 24 mm
 Overall height 9 mm
 Mounting depth 45.5 mm
 Mounting hole 20.3 mm

Mechanical design

Mounting ring nut
 Terminals solder/quick connect terminals 2.8 x 0.8 mm
 Contact system bridge contact
 Contact function momentary
 Contact arrangement see order block
 Contact materials Ag
 Illuminability yes
 Lamp socket BA 9 s

Mechanical characteristics

Operating force max. 10 N
 Operating travel 3.6 mm
 Switching travel NC 0.8 mm
 Switching travel NO 2.9 mm
 Robustness min. 100 N

Electrical characteristics

Rated voltage AC max. 250 V
 Rated current max. 2 A
 Contact resistance acc. to life max. 200 mΩ

Other specifications

Operating life 100000
 Degree of protection from front side IP40 (IP65 with sealing cap)
 Ambient temp. operating min. -25 °C
 Ambient temp. operating max. +85 °C
 Storage temperature min. -40 °C
 Storage temperature max. +90 °C
 Resistance to constant environment according to IEC 600 68-2-3 and 2-30
 Resistance at variable environment according to IEC 600 68-2-14 and 2-33
 Weight 18 g
 Approvals ENEC 25 T 55 (85)
 Flame class acc. to UL 94 V 0
 Hot wire ignition acc. to IEC 60695-2-1 yes

Other Pushb.

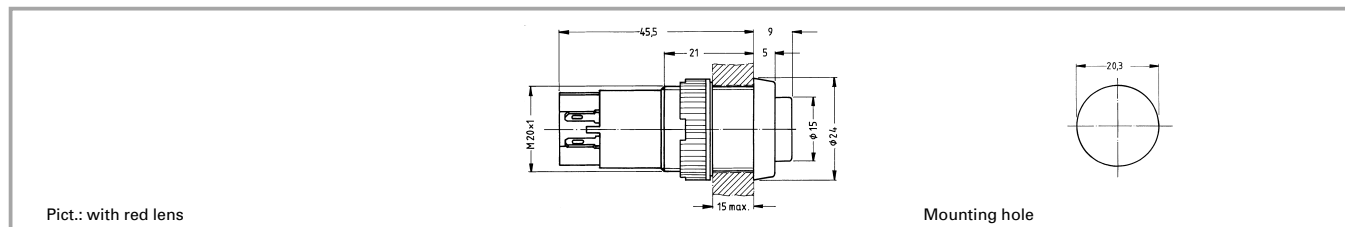
Accessories Illuminable pushbutton, with lamp socket BA9s (MBC/MCC), mounting hole diameter 20.3 mm, 250 V/2 A

Description	Photo	Order no.	Page
Filament lamp, BA 9s base (MBC/MCC), 12 - 15 V		1.90.060.003/0000	5 - 7
Filament lamp, BA 9s base (MBC/MCC), 24 - 30 V		1.90.060.014/0000	5 - 7
LED BA 9s (MBC/MCC) superbright, red, 24 V		1.90.690.341/0000	5 - 19
LED BA 9s (MBC/MCC) superbright, green, 24 V		1.90.690.342/0000	5 - 19

Accessories Illuminable pushbutton, with lamp socket BA9s (MBC/MCC), mounting hole diameter 20.3 mm, 250 V/2 A

Description	Photo	Order no.	Page
LED BA 9s (MBC/MCC) superbright, yellow, 24 V		1.90.690.343/0000	5 - 19
LED BA 9s (MBC/MCC) superbright, blue, 24 V		1.90.690.344/0000	5 - 19
LED BA 9s (MBC/MCC) superbright, white, 24 V		1.90.690.345/0000	5 - 19
Silicone sealing cap (IP65)		5.52.008.065/0000	
Protective sleeve for terminals		5.52.011.030/0100	
Fixing spanner M 20, M 22, for ring nut		5.58.002.018/0105	5 - 23

Illuminable pushbutton, with lamp socket BA9s (MBC/MCC), mounting hole diameter 20.3 mm, 250 V/2 A



Contact function	Contact arrangement	Order no. without lens	Note
momentary	1 NC + 1 NO	1.15.112.121/0000	Please include the desired lens in your order.
momentary	1 NO	1.15.112.101/0000	Please include the desired lens in your order.

Technical data see page 1 - 84

Lenses:

- Lens, transparent colourless: 5.49.205.008/1002
- Lens, transparent red: 5.49.205.008/1303
- Lens, transparent yellow: 5.49.205.008/1402
- Lens, transparent green: 5.49.205.008/1502

X-ON Electronics

Largest Supplier of Electrical and Electronic Components

Click to view similar products for [rafi](#) manufacturer:

Other Similar products are found below :

5.05.510.935/0000	5.00.070.074/0000	1.15.114.936/0000	1.15.108.152/0000	1.30.279.021/0700	1.74.510.011/2500	1.10.119.967/0000
1.69.508.113/1002	1.30.270.021/2400	1.20.126.604/0000	1.30.276.601/0000	1.10.011.001/0551	5.00.888.506/1500	1.02.157.201/1300
3.13.026.001/0000	1.30.285.221/0100	1.30.270.021/2300	1.20.124.018/0000	1.66.003.081/1400	1.30.241.001/2207	5.76.204.114/0400
5.73.110.000/0000	1.90.690.351/0000	1.30.295.222/0000	1.30.285.101/0100	1.30.280.001/2201	1.30.275.221/0800	1.30.273.602/0300
1.30.242.026/2207	1.30.073.601/2000	1.20.123.035/0000	1.10.010.001/0221	1.10.099.201/0011	5.70.090.016/1001	5.70.090.011/1001
5.70.090.015/1001	1.20.126.303/9000	5.05.511.747/1500	1.90.692.001/0000	1.01.102.001/0104	3.14.002.052/0000	1.30.275.321/0100
5.05.511.476/2200	1.30.299.021/0700	1.15.108.632/0100	1.15.156.011/0000	1.65.111.051/0000	5.00.100.105/0000	5.00.070.078/0000
1.30.142.114/0209						