

HAND HELD CASES

66 Series Grip Cases

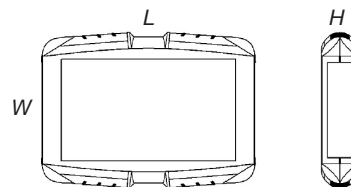
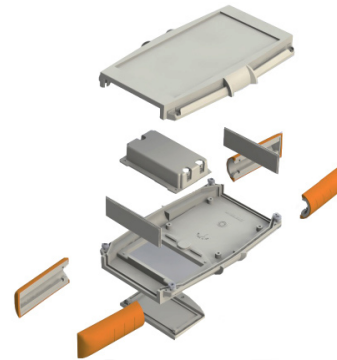
Innovative unique design for quick and easy assembly. Features soft-grip corners for added protection and ergonomic feel.

- Moulded in high impact ABS, UL94-V0
- Screwless assembly via four soft-grip corners
- Battery compartment lid with M3 retaining screw
- Optional retaining screws for added security
- Recesses in lid and base for membrane keypads or overlays
- PCB pillars in lid and base
- Optional EPDM gasket for IP65 seal



SPECIFICATION

Materials	Lid, base, front and back panels high impact ABS, UL94-V0. Soft-grip corners TPE coated polypropylene
Operating Temperature	Resistant to temperatures of up to 85°C
Protection class	IP62 as standard IP65 with gasket option
Standard colours	Lid, base and panels light grey or black Soft-grip corners red, blue, yellow, green, orange, grey or black Custom colours available to order
Standard unit includes	25mm high Lid, base & panels 35mm high Lid, base & panels Battery Door & retaining screw Soft-grip corners and battery compartment supplied separately



Battery Compartments

TYPE NO.	DESCRIPTION	COLOUR
CHHBAT1BK	Clip-in Battery compartment PP3	Black
CHHBAT1GY	Clip-in Battery compartment PP3	Grey
CHHBAT2BK	Clip-in Battery compartment AA	Black
CHHBAT2GY	Clip-in Battery compartment AA	Grey



IP Gasket

- EPDM rubber gasket
- IP65 protection
- Operating temperature -20°C to +85°C

TYPE NO.	DESCRIPTION
CHH66GSKT	66-IP Gasket

BLACK	LIGHT GREY	LENGTH	WIDTH	HEIGHT	STYLE
CHH661NBK	CHH661NGY	145mm	95mm	25mm	-
CHH661BBK	CHH661BGY	145mm	95mm	25mm	battery door
CHH662NBK	CHH662NGY	145mm	95mm	35mm	-
CHH662BBK	CHH662BGY	145mm	95mm	35mm	battery door
CHH663NBK	CHH663NGY	185mm	110mm	25mm	-
CHH663BBK	CHH663BGY	185mm	110mm	25mm	battery door
CHH664NBK	CHH664NGY	185mm	110mm	35mm	-
CHH664BBK	CHH664BGY	185mm	110mm	35mm	battery door
CHH665NBK	CHH665NGY	200mm	120mm	25mm	-
CHH665BBK	CHH665BGY	200mm	120mm	25mm	battery door
CHH666NBK	CHH666NGY	200mm	120mm	35mm	-
CHH666BBK	CHH666BGY	200mm	120mm	35mm	battery door

* soft grip corners sold separately



Soft-grip Corners

TYPE NO.	COLOUR	DESCRIPTION
CHH66C1BL	Blue - RAL 5007	to fit 25mm high cases
CHH66C1GR	Green - RAL 6026	to fit 25mm high cases
CHH66C1RD	Red - RAL 3020	to fit 25mm high cases
CHH66C1OR	Orange - RAL 2003	to fit 25mm high cases
CHH66C1BK	Black - RAL 9004	to fit 25mm high cases
CHH66C1YL	Yellow - RAL 1021	to fit 25mm high cases
CHH66C1GY	Grey- RAL 7001	to fit 25mm high cases
CHH66C2BL	Blue- - RAL 5007	to fit 35mm high cases
CHH66C2GR	Green - RAL 6026	to fit 35mm high cases
CHH66C2RD	Red - RAL 3020	to fit 35mm high cases
CHH66C2OR	Orange - RAL 2003	to fit 35mm high cases
CHH66C2BK	Black - RAL 9004	to fit 35mm high cases
CHH66C2YL	Yellow - RAL 1021	to fit 35mm high cases
CHH66C2GY	Grey- RAL 7001	to fit 35mm high cases

X-ON Electronics

Largest Supplier of Electrical and Electronic Components

Click to view similar products for [camden manufacturer](#):

Other Similar products are found below :

[412689X](#) [CTBP92VE/12R](#) [CTBP9350/12](#) [IND515205-240-T/GRN](#) [IND515205-240-T/RD](#) [IND5032405-240-T/GRN](#) [CE10.00.EI](#)
[C192SHAND](#) [CNMB/6ST/2](#) [CNMB/4ST/2](#) [CSACST004](#) [CTBP9200/9](#) [CIME/M/BE2250SS](#) [CHH64E1BL](#) [CIM/15W-DMFS](#) [CHHBAT2GY](#)
[CFTBN/2](#) [CCB2S1/04](#) [CHDX6-221C](#) [CHDX8-224](#) [CHDASMP29](#) [CHDASMP30](#) [CHDASMP34](#) [CHDX810DD](#) [CHDX811DD](#)
[CCTTM40LR](#) [CTBP92VJ/5S](#) [CTBP92VJ/8R](#) [CTSN431/12/M](#) [CTSN433/12/M](#) [CUABOX006](#) [CE10.00.FM](#) [CBRPH-BLK](#) [BIM2003/13-](#)
[WH/WH](#) [RX2008/S-5-WH](#) [CBARD-CAR](#) [CRDCG0007](#) [CNMB/4/KIT](#) [CTB5050/5](#) [CTBP92HE/11](#) [CTBP9358/10AO](#) [CHH66C2GY](#)
[CHH456PBK](#) [CHH451ABK](#) [CIM/9W-DMFS](#) [CIM/25W-DMFS](#) [RTM5006/16-NC-BLK](#) [IND5032405-125-T/AMB](#) [CCB1S1/03](#) [CCD2S1/04](#)