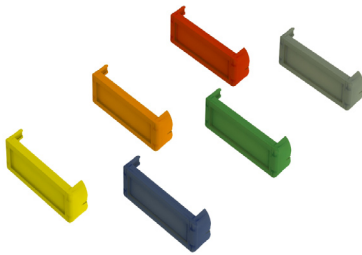
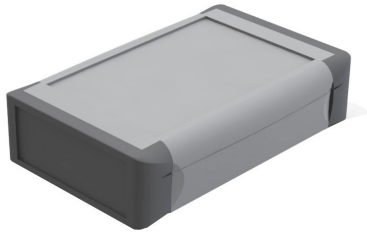


HAND HELD CASES

64 Series Handy Cases

Multi-purpose snap-fit hand-held enclosures designed for quick assembly

- Moulded in high grade ABS, UL94-V0
- Snap-fit base & lid assembly, via end caps
- Battery compartment lid M3 retaining screw
- Recesses in lid, base and end caps for membrane keypads or overlays
- PCB pillars in lid and base
- Optional EPDM gasket for IP65 seal



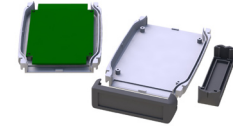
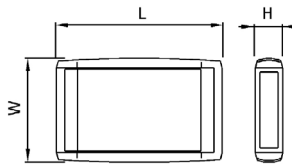
Plastic End Caps

TYPE NO.	COLOUR	DESCRIPTION
CHH64E1BL	Blue - RAL 5007	to fit 20mm high cases
CHH64E1GR	Green - RAL 6026	to fit 20mm high cases
CHH64E1RD	Red - RAL 3020	to fit 20mm high cases
CHH64E1OR	Orange - RAL 2003	to fit 20mm high cases
CHH64E1BK	Black - RAL 9004	to fit 20mm high cases
CHH64E1YL	Yellow - RAL 1021	to fit 20mm high cases
CHH64E1DG	Grey - RAL 7001	to fit 20mm high cases
CHH64E2BL	Blue - RAL 5007	to fit 30mm high cases
CHH64E2GR	Green - RAL 6026	to fit 30mm high cases
CHH64E2RD	Red - RAL 3020	to fit 30mm high cases
CHH64E2OR	Orange - RAL 2003	to fit 30mm high cases
CHH64E2BK	Black - RAL 9004	to fit 30mm high cases
CHH64E2YL	Yellow - RAL 1021	to fit 30mm high cases
CHH64E2DG	Grey - RAL 7001	to fit 30mm high cases

SPECIFICATION

Material	Lid & base high grade ABS, UL94-V0
Operating Temperature	Resistant to temperatures of up to 85°C
Protection class	IP62 as standard IP65 with gasket option
Standard colours	Lid & base light grey similar to RAL 7035, end panels grey similar to RAL 7001 Lid & base dark grey similar to RAL 7021, end panels black similar to RAL 9004 Custom colours available to order
Standard unit includes	20mm high Lid, base & end caps 30mm high Lid, base & end caps Battery compartment & retaining screw
Options	IP65 gasket

BLACK	LIGHT GREY	LENGTH	WIDTH	HEIGHT	STYLE
CHH641NBK	CHH641NGY	100mm	80mm	20mm	-
CHH642BBK	CHH642BGY	100mm	80mm	30mm	battery compartment
CHH643NBK	CHH643NGY	120mm	80mm	20mm	-
CHH644BBK	CHH644BGY	120mm	80mm	30mm	battery compartment



64-IP Gasket

- EPDM rubber gasket
- IP65 protection
- Operating temperature -20°C to +85°C

TYPE NO.	DESCRIPTION
CHH64GASK	64-IP Gasket

UNIVERSAL ENCLOSURES

HAND HELD CASES

HEAVY DUTY ENCLOSURES

DIN RAIL BOXES

INTERFACE SUPPORTS

CONTROL STATIONS

DIECAST & METAL BOXES

DESKTOP & INSTRUMENT CASES

POTTING BOXES

19" ENCLOSURES

19" SUBRACKS

CUSTOM SIZED ENCLOSURES

CUSTOM SERVICES

X-ON Electronics

Largest Supplier of Electrical and Electronic Components

Click to view similar products for [Enclosures, Boxes, & Cases](#) *category:*

Click to view products by [Camden](#) *manufacturer:*

Other Similar products are found below :

[CR-425 PAINTED](#) [585-R-WH-PK](#) [M-10-PLATED](#) [60221-01](#) [60566-01-000](#) [HPL-9VB BATT DOOR](#) [M-16-LID-PLATED](#) [M18-PLTD](#) [M-21-LID-PLATED](#) [M-21-PLATED](#) [M-23-PLATED](#) [CU-281-MB](#) [6711GSKT](#) [71884-29-028](#) [LH45-100 Black](#) [7200B](#) [72868-510-000](#) [CNS-0000 Black](#) [72883-510-000](#) [CNS-0101 Black](#) [72906-510-000](#) [CNS-0407 Black](#) [73091-510-000](#) [CNM-0000-BLACK Kit](#) [73092-510-000](#) [CNM-0101 Black](#) [73108-510-000](#) [CNL-0303 Black](#) [73395-510-039](#) [CNS-0006 Bone](#) [74257-510-000](#) [CNL-0004](#) [MDC-1183-PLAIN-ALUM](#) [MDC-1183-PTD](#) [MDC-13104-PLAIN-ALUM](#) [MDC-211 - PAINTED IVORY/BEIGE](#) [MDC-321-PTD](#) [MDC-432-PLAIN-ALUM](#) [MDC-973-PTD](#) [76](#) [77153-01-028](#) [FLX6030](#) [83535-01-508](#) [PS-11296-G](#) [PS-11298-B](#) [116-508](#) [120-407](#) [120-412](#) [120-909](#) [120-455](#) [R272-100-000](#) [120-910](#) [R501-001-010](#) [R508-080-000](#) [R508-160-000](#) [R530-120-000](#) [R530-122-000](#) [R530-200-000](#) [R531-160-000](#) [R531-200-000](#) [R582-080-100](#)