

# MINIATURE INDUSTRIAL COMPRESSION LOAD CELL WITH THROUGH-BODY MOUNTING HOLES

**Compression**  
0-50 lb to 0-50,000 lb  
0-23 kg to 0-22,000 kg

## LCGB Series



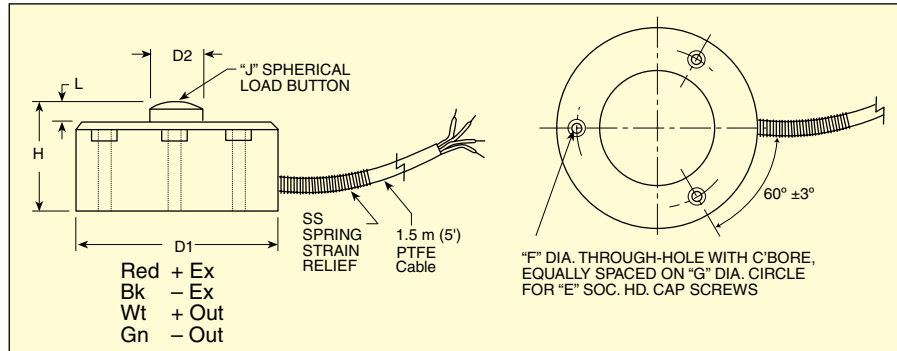
Standard

- Stainless Steel
- High Accuracy
- Low Profile
- Miniature Size

The LCGB Series comprises miniature low-profile compression load cells with excellent long-term stability. An all stainless steel construction ensures reliability in harsh industrial environments. These cells are designed to be mounted on a flat surface using cap screws to secure them to the base. A load button is integral to their basic construction for even force distribution.



LCGB-5K shown actual size.



### Dimensions: mm (inch)

CAPACITY	D1	D2	H	L	E	F	G	J
50 to 2000 lb	32 (1.25)	8.1 (0.32)	10 (0.39)	1.8 (0.07)	#2	4.0 (0.16)	25.4 (1.00)	51 (2)
3000 to 10,000 lb	38 (1.50)	11 (0.43)	16 (0.63)	2.0 (0.08)	#4	5.6 (0.22)	31.8 (1.25)	51 (2)
15,000 to 30,000 lb	51 (2.00)	15 (0.60)	25 (1.00)	3.0 (0.12)	#6	6.4 (0.25)	41.3 (1.63)	63.5 (2.5)
50,000 lb	76 (3.00)	20 (0.78)	38 (1.50)	4.6 (0.18)	#6	6.4 (0.25)	60.3 (2.38)	153 (6)

## SPECIFICATIONS

- Excitation:** 10 Vdc
- Output:** 2 mV/V nominal
- 5-Point Calibration:** 0%, 50% 100%, 50%, 0%; 59K shunt data included
- Linearity:** ±0.25% FSO
- Hysteresis:** ±0.20% FSO
- Repeatability:** ±0.10% FSO
- Zero Balance:** ±2% FSO
- Operating Temp Range:** -54 to 121°C (-65 to 250°F)
- Compensated Temp Range:** 16 to 71°C (60 to 160°F)
- Thermal Effects:**
  - Span: ±0.018% rdg/°C
  - Zero: ±0.009% FSO/°C
- Safe Overload:** 150% of capacity
- Ultimate Overload:** 300% of capacity
- Bridge Resistance:** 350 Ω minimum
- Deflection:** 0.08 mm (0.003")
- Construction:** Stainless steel
- Electrical Connection:** 1.5 m (5') 4-conductor cable with strain relief
- Protection Rating:** IP54

## To Order Visit [newportUS.com/lcgb](http://newportUS.com/lcgb) for Pricing and Details

CAPACITY		MODEL NO.	COMPATIBLE METERS
lb	kg		
50	23	LCGB-50	DPiS, DP41-S, DP25B-S
100	45	LCGB-100	DPiS, DP41-S, DP25B-S
250	114	LCGB-250	DPiS, DP41-S, DP25B-S
500	227	LCGB-500	DPiS, DP41-S, DP25B-S
750	340	LCGB-750	DPiS, DP41-S, DP25B-S
1000	455	LCGB-1K	DPiS, DP41-S, DP25B-S
2000	909	LCGB-2K	DPiS, DP41-S, DP25B-S
3000	1361	LCGB-3K	DPiS, DP41-S, DP25B-S
5000	2269	LCGB-5K	DPiS, DP41-S, DP25B-S
10,000	4537	LCGB-10K	DPiS, DP41-S, DP25B-S
15,000	6806	LCGB-15K	DPiS, DP41-S, DP25B-S
20,000	9074	LCGB-20K	DPiS, DP41-S, DP25B-S
30,000	13,612	LCGB-30K	DPiS, DP41-S, DP25B-S
50,000	22,686	LCGB-50K	DPiS, DP41-S, DP25B-S

Comes complete with 5-point NIST-traceable calibration and 59 kΩ shunt data.

**Ordering Examples:** LCGB-5K, 5000 lb capacity load cell.

LCGB-50, 50 lb capacity load cell.

## **X-ON Electronics**

Largest Supplier of Electrical and Electronic Components

*Click to view similar products for [newport manufacturer](#):*

Other Similar products are found below :

[BDS1](#) [BDT1](#) [WTK-14-36/N](#) [5TC-TT-J-24-72](#) [TXDIN70](#) [OTP-U-F](#) [5SC-TT-K-30-36](#) [WTK-8-24/N](#) [TPJ-U-F](#) [OTP-U-M](#) [5TC-TT-J-24-50/N](#)  
[5SC-TT-T-30-72](#) [SMTC-AL-P](#) [SMPW-CC-T-M](#) [MPJ-K-F-ROHS](#)