

nominal voltage: 1,2V
max. charge voltage: 1,5V

capacity:
 nominal : 550mAh
 minimum: 450mAh
 400mAh

max. continuous discharge current: 1650mA

charge:
 standard charge: charge current 55mA, charge time 16hrs at 20°C
 quick charge: 150mA, 4hrs
 fast charge: 550mA, 1,1hrs

recommended charge termination control parameters:
 -dV: 5....10mV
 dT/dt: 0,8....1°C per min
 TCO: 45....50°C

trickle charge current: 5....27,5mA (recommended)

continuous overcharge: ≤ 55mA (less than 1 year) no conspicuous deformation, no leakage

internal resistance: ≤ 55mOhms at 1000Hz, battery fully charged

life expectancy: 500 cycles IEC standard

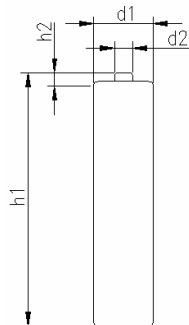
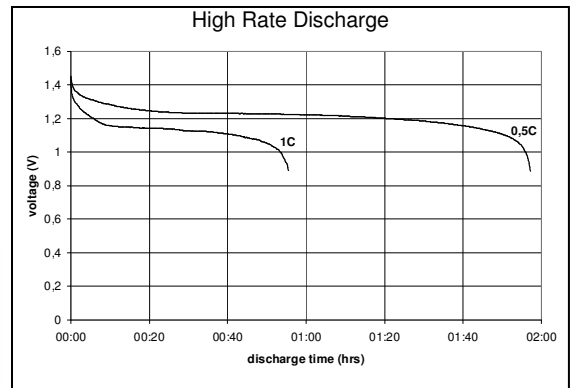
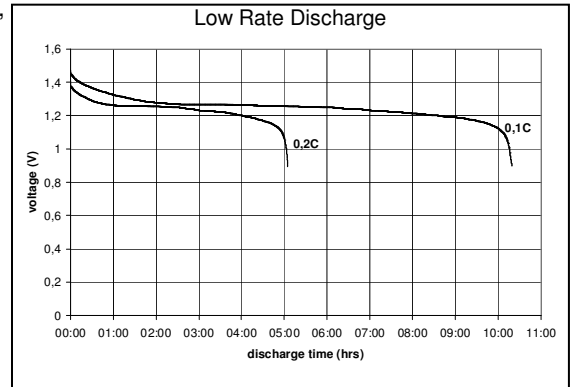
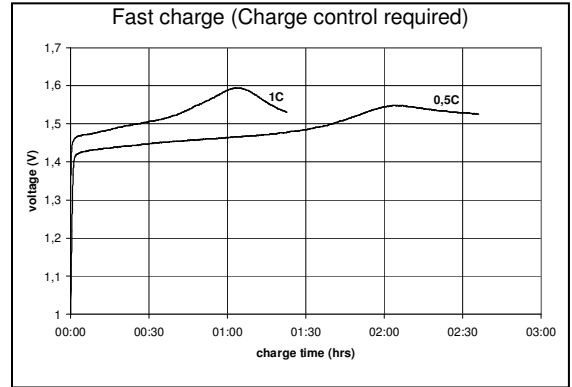
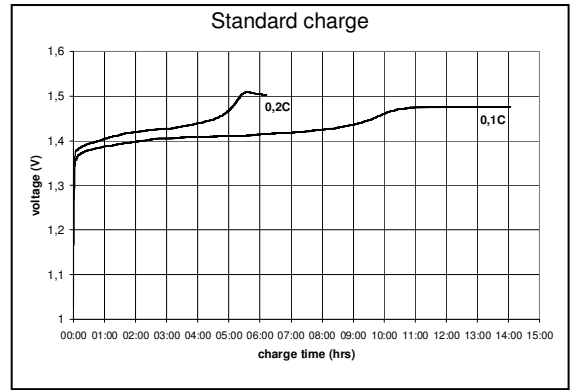
ambient temperature range: 0....45°C standard charge
 10....40°C fast charge
 -20....60°C discharge
 -20....35°C storage less than 6 months

conditions

at standard charge (0,1C / 20°C)

discharge at 0,2C
 discharge at 0,2C
 discharge at 1C
 1,0V end discharge voltage
 ambient temperature 20°C

ambient temperature -20....60°C



mechanical specifications

cell dimensions (with sleeve)
 diameter d1: 10,3-0,7mm
 diameter d2: 3,2+/-0,2mm
 height h1: 44,3-1,0mm
 height h2: min. 0,8mm
 weight: approx. 12g

	specifications for model/type:	AAA – NiMH 550mAh
	Ansmann drawing number / part number:	4 pcs blister packing 5030772
	author / date:	Gramlich / 25.07.2007

X-ON Electronics

Largest Supplier of Electrical and Electronic Components

Click to view similar products for [ansmann](#) manufacturer:

Other Similar products are found below :

[5020012](#) [1000-0003](#) [5030992](#) [1520-0004](#) [1501-0004-1](#) [1250-0013](#) [1001-0020-UK](#) [2312-3003](#) [1600-0199](#) [5030902](#) [1600-0137](#) [1900-0019](#)
[1001-0014-UK](#) [5035362](#) [5707173](#) [5311113 / APS 1000](#) [5035391](#) [10950964/01](#) [5000023](#) [5030982](#) [1600-0138](#) [1250-0014](#) [BCA120-350](#)
[1600-0145](#) [5015293](#) [2311-3003](#) [5030802](#) [5035222](#) [5030912](#) [5016243](#) [2310-3001](#) [5030641](#) [5001183](#) [1600-0154](#) [5035352](#) [ACS310](#) [5035342](#)
[5035202](#) [5015332](#) [5015303](#) [5035201](#) [2311-3002](#)