

**nominal voltage:** 1,2V  
**max. charge voltage:** 1,5V

conditions  
 at standard charge  
 (0,1C / 20°C)

**capacity:**  
 nominal : 1100mAh  
 minimal: 930mAh  
 880mAh

discharge at 0,2C  
 discharge at 0,2C  
 discharge at 1C  
 1,0V end discharge voltage  
 ambient temperature 20°C

**max. continuous discharge current:** 2000mA  
 ambient temperature 20....50°C

**charge:**  
 standard charge: charge current 100mA charge time 16hrs at 20°C  
 rapid charge: 220mA 5,5hrs  
 fast charge: 1000mA 1,15hrs

recommended charge termination control parameters:  
 -dV: 5....10mV  
 dT/dt: 0,8....1°C per min  
 TCO: 45....50°C

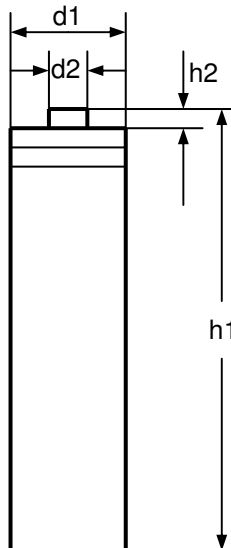
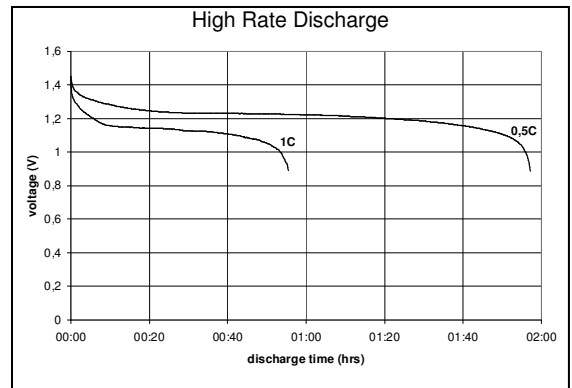
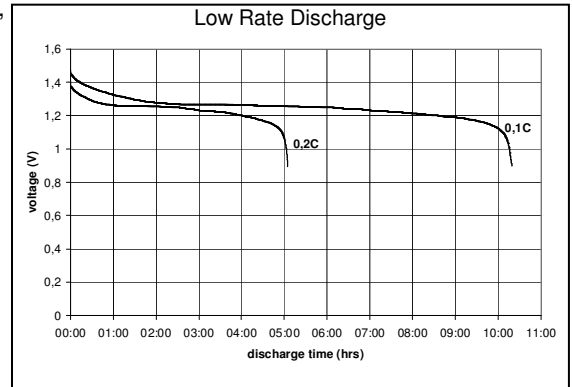
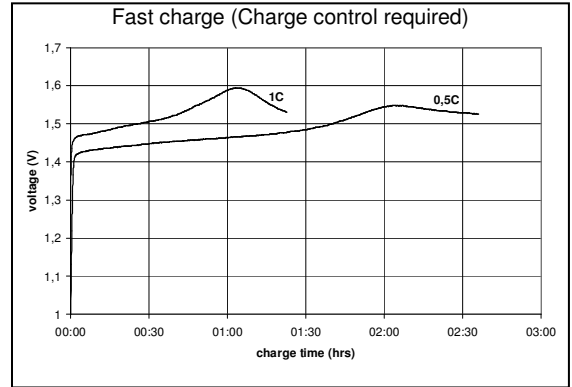
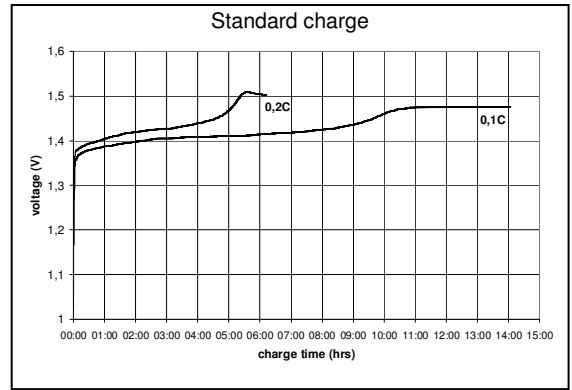
trickle charge current: 10....50mA (recommended)

continuous overcharge: ≤ 50mA (less than 1 year)  
 no conspicuous deformation, no leakage

**internal resistance:** ≤ 40mOhms  
 at 1000Hz, battery fully charged

**life expectancy:** 500 cycles IEC standard

**ambient temperature range:** 0....50°C  
 10....45°C  
 -20....60°C  
 -20....50°C  
 -20....40°C  
 -20....30°C  
 standard charge  
 fast charge  
 discharge  
 storage less than 30 days  
 storage less than 3 months  
 storage less than 1 year



**mechanical specifications**  
 cell dimensions (with sleeve)  
 diameter d1: 10,5 – 0,7mm  
 diameter d2: max. 3,8mm  
 height h1: 44,5 – 1,5mm  
 height h2: min. 0,8mm  
 weight: approx. 13g

	specifications for model/type:	AAA – NiMH 1100mAh
	Ansmann drawing number / part number:	5035221
	author / date:	Gramlich / 26.09.2007

## **X-ON Electronics**

Largest Supplier of Electrical and Electronic Components

*Click to view similar products for [ansmann](#) manufacturer:*

Other Similar products are found below :

[5020012](#) [1000-0003](#) [5030992](#) [1520-0004](#) [1501-0004-1](#) [1250-0013](#) [1001-0020-UK](#) [2312-3003](#) [1600-0199](#) [5030902](#) [1600-0137](#) [1900-0019](#)  
[1001-0014-UK](#) [5035362](#) [5707173](#) [5311113 / APS 1000](#) [5035391](#) [10950964/01](#) [5000023](#) [5030982](#) [1600-0138](#) [1250-0014](#) [BCA120-350](#)  
[1600-0145](#) [5015293](#) [2311-3003](#) [5030802](#) [5035222](#) [5030912](#) [5016243](#) [2310-3001](#) [5030641](#) [5001183](#) [1600-0154](#) [5035352](#) [ACS310](#) [5035342](#)  
[5035202](#) [5015332](#) [5015303](#) [5035201](#) [2311-3002](#)