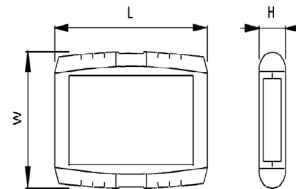
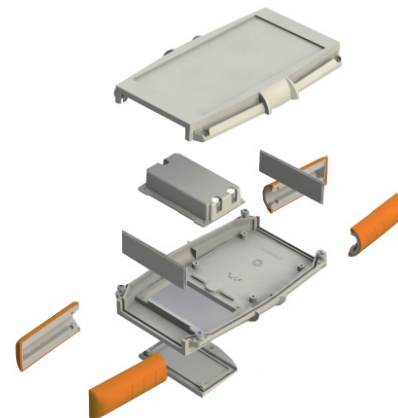


HAND HELD CASES

66 Series Grip Cases

Innovative unique design for quick and easy assembly. Features soft-grip corners for added protection and ergonomic feel.

- Moulded in high impact ABS, UL94-V0
- Screwless assembly via four soft-grip corners
- Battery compartment lid with M3 retaining screw
- Optional retaining screws for added security
- Recesses in lid and base for membrane keypads or overlays
- PCB pillars in lid and base
- Optional EPDM gasket for IP65 seal



BLACK	LIGHT GREY	LENGTH	WIDTH	HEIGHT	STYLE
CHH661NBK	CHH661NGY	145mm	95mm	25mm	-
CHH661BBK	CHH661BGY	145mm	95mm	25mm	battery door
CHH662NBK	CHH662NGY	145mm	95mm	35mm	-
CHH662BBK	CHH662BGY	145mm	95mm	35mm	battery door
CHH663NBK	CHH663NGY	185mm	110mm	25mm	-
CHH663BBK	CHH663BGY	185mm	110mm	25mm	battery door
CHH664NBK	CHH664NGY	185mm	110mm	35mm	-
CHH664BBK	CHH664BGY	185mm	110mm	35mm	battery door
CHH665NBK	CHH665NGY	200mm	120mm	25mm	-
CHH665BBK	CHH665BGY	200mm	120mm	25mm	battery door
CHH666NBK	CHH666NGY	200mm	120mm	35mm	-
CHH666BBK	CHH666BGY	200mm	120mm	35mm	battery door

soft grip corners not included



Soft-grip Corners

TYPE NO.	COLOUR	DESCRIPTION
CHH66C1BL	Blue - RAL 5007	to fit 25mm high cases
CHH66C1GR	Green - RAL 6026	to fit 25mm high cases
CHH66C1RD	Red - RAL 3020	to fit 25mm high cases
CHH66C1OR	Orange - RAL 2003	to fit 25mm high cases
CHH66C1BK	Black - RAL 9004	to fit 25mm high cases
CHH66C1YL	Yellow - RAL 1021	to fit 25mm high cases
CHH66C1GY	Grey - RAL 7001	to fit 25mm high cases
CHH66C2BL	Blue - RAL 5007	to fit 35mm high cases
CHH66C2GR	Green - RAL 6026	to fit 35mm high cases
CHH66C2RD	Red - RAL 3020	to fit 35mm high cases
CHH66C2OR	Orange - RAL 2003	to fit 35mm high cases
CHH66C2BK	Black - RAL 9004	to fit 35mm high cases
CHH66C2YL	Yellow - RAL 1021	to fit 35mm high cases
CHH66C2GY	Grey - RAL 7001	to fit 35mm high cases

SPECIFICATION

Materials	Lid, base, front and back panels high impact ABS, UL94-V0. Soft-grip corners TPE coated polypropylene
Operating Temperature	Resistant to temperatures of up to 85°C
Protection class	IP62 as standard IP65 with gasket option
Standard colours	Lid, base and panels light grey or black Soft-grip corners red, blue, yellow, green, orange, grey or black Custom colours available to order
Standard unit includes	25mm high Lid, base & panels 35mm high Lid, base & panels Battery Door & retaining screw Soft-grip corners and battery compartment supplied separately

Battery Compartments

TYPE NO.	DESCRIPTION	COLOUR
CHHBAT1BK	Clip-in Battery compartment PP3	Black
CHHBAT1GY	Clip-in Battery compartment PP3	Grey
CHHBAT2BK	Clip-in Battery compartment AA	Black
CHHBAT2GY	Clip-in Battery compartment AA	Grey

IP Gasket

- EPDM rubber gasket
- IP65 protection
- Operating temperature -20°C to +85°C

TYPE NO.	DESCRIPTION
CHH66GSKT	66-IP Gasket

X-ON Electronics

Largest Supplier of Electrical and Electronic Components

Click to view similar products for [Enclosures, Boxes, & Cases](#) *category:*

Click to view products by [Camden](#) *manufacturer:*

Other Similar products are found below :

[CR-425 PAINTED](#) [585-R-WH-PK](#) [M-10-PLATED](#) [60221-01](#) [60566-01-000](#) [HPL-9VB BATT DOOR](#) [M-16-LID-PLATED](#) [M18-PLTD](#) [M-21-LID-PLATED](#) [M-21-PLATED](#) [M-23-PLATED](#) [CU-281-MB](#) [6711GSKT](#) [71884-29-028](#) [LH45-100 Black](#) [7200B](#) [72868-510-000](#) [CNS-0000 Black](#) [72883-510-000](#) [CNS-0101 Black](#) [72906-510-000](#) [CNS-0407 Black](#) [73091-510-000](#) [CNM-0000-BLACK Kit](#) [73092-510-000](#) [CNM-0101 Black](#) [73108-510-000](#) [CNL-0303 Black](#) [73395-510-039](#) [CNS-0006 Bone](#) [74257-510-000](#) [CNL-0004](#) [MDC-1183-PLAIN-ALUM](#) [MDC-1183-PTD](#) [MDC-13104-PLAIN-ALUM](#) [MDC-211 - PAINTED IVORY/BEIGE](#) [MDC-321-PTD](#) [MDC-432-PLAIN-ALUM](#) [MDC-973-PTD](#) [76](#) [77153-01-028](#) [FLX6030](#) [83535-01-508](#) [PS-11296-G](#) [PS-11298-B](#) [116-508](#) [120-407](#) [120-412](#) [120-909](#) [120-455](#) [R272-100-000](#) [120-910](#) [R501-001-010](#) [R508-080-000](#) [R508-160-000](#) [R530-120-000](#) [R530-122-000](#) [R530-200-000](#) [R531-160-000](#) [R531-200-000](#) [R582-080-100](#)